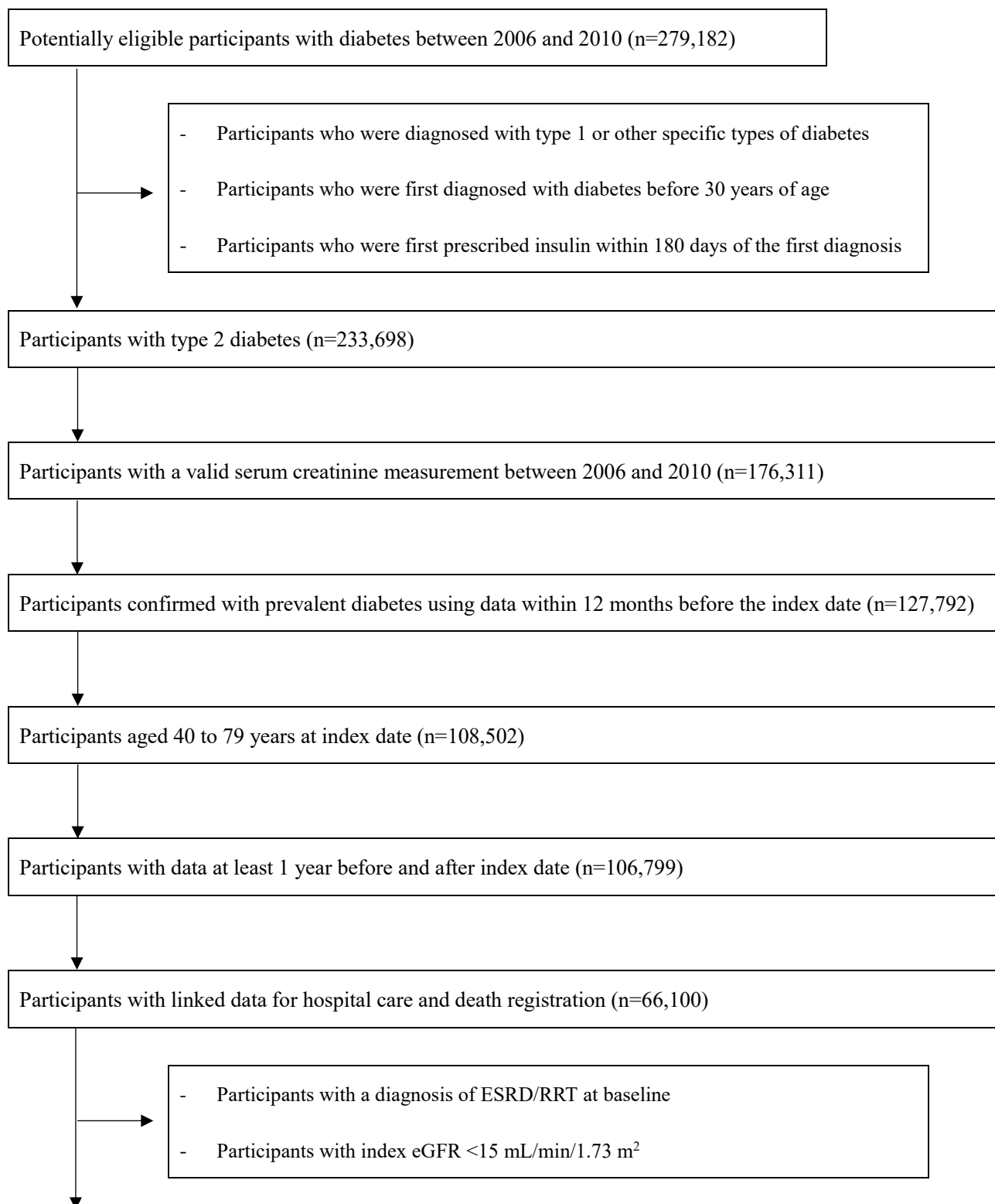
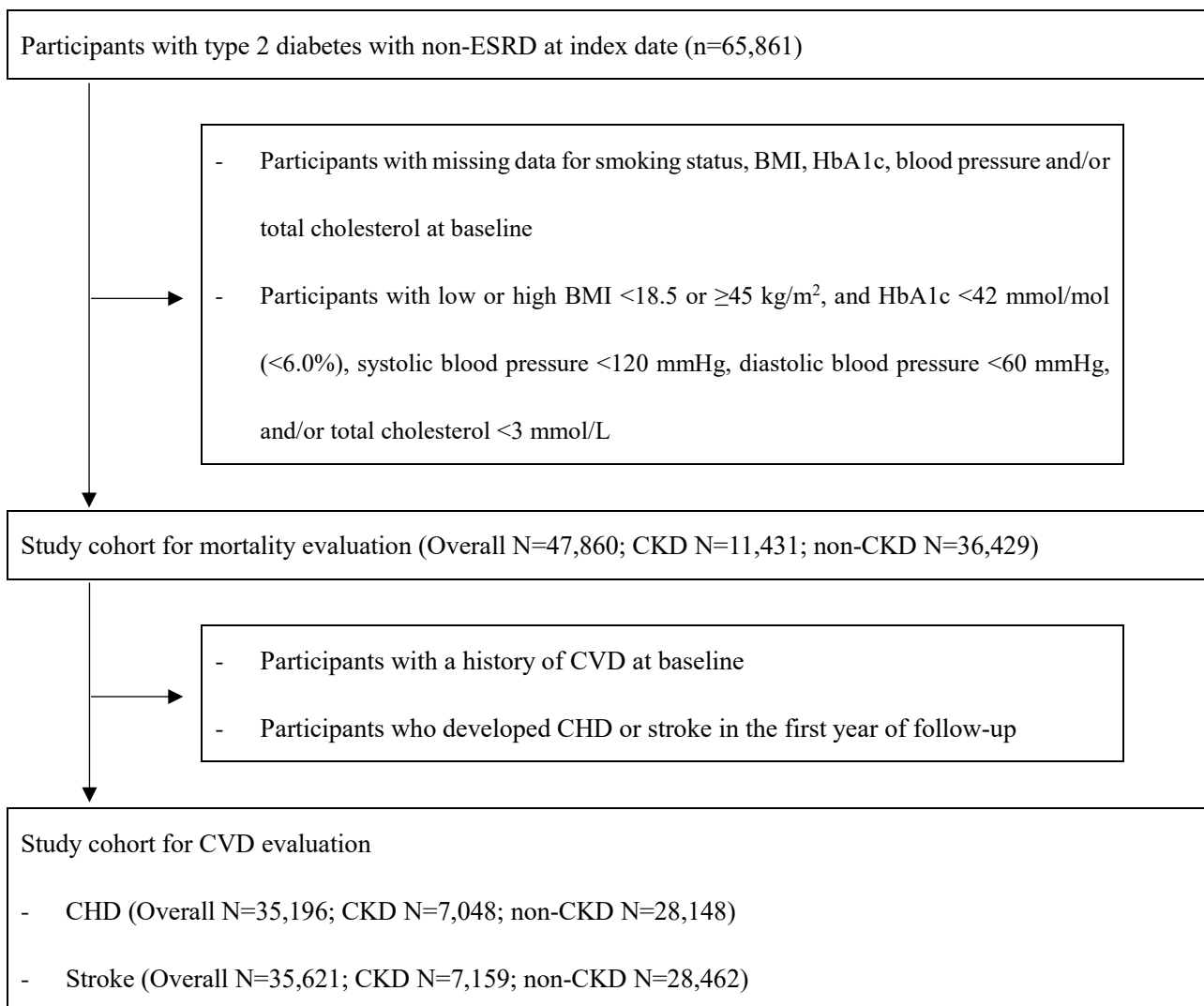


SUPPLEMENTARY MATERIAL

Figure S1. Study cohort selection





BMI, body mass index; CKD, chronic kidney disease; CHD, coronary heart disease; CVD, Cardiovascular diseases; eGFR, estimated glomerular filtration rate; ESRD, end-stage renal disease; RRT, renal replacement therapy

Table S1. Breakdown of risk factors controlled according to chronic kidney disease and a history of cardiovascular diseases

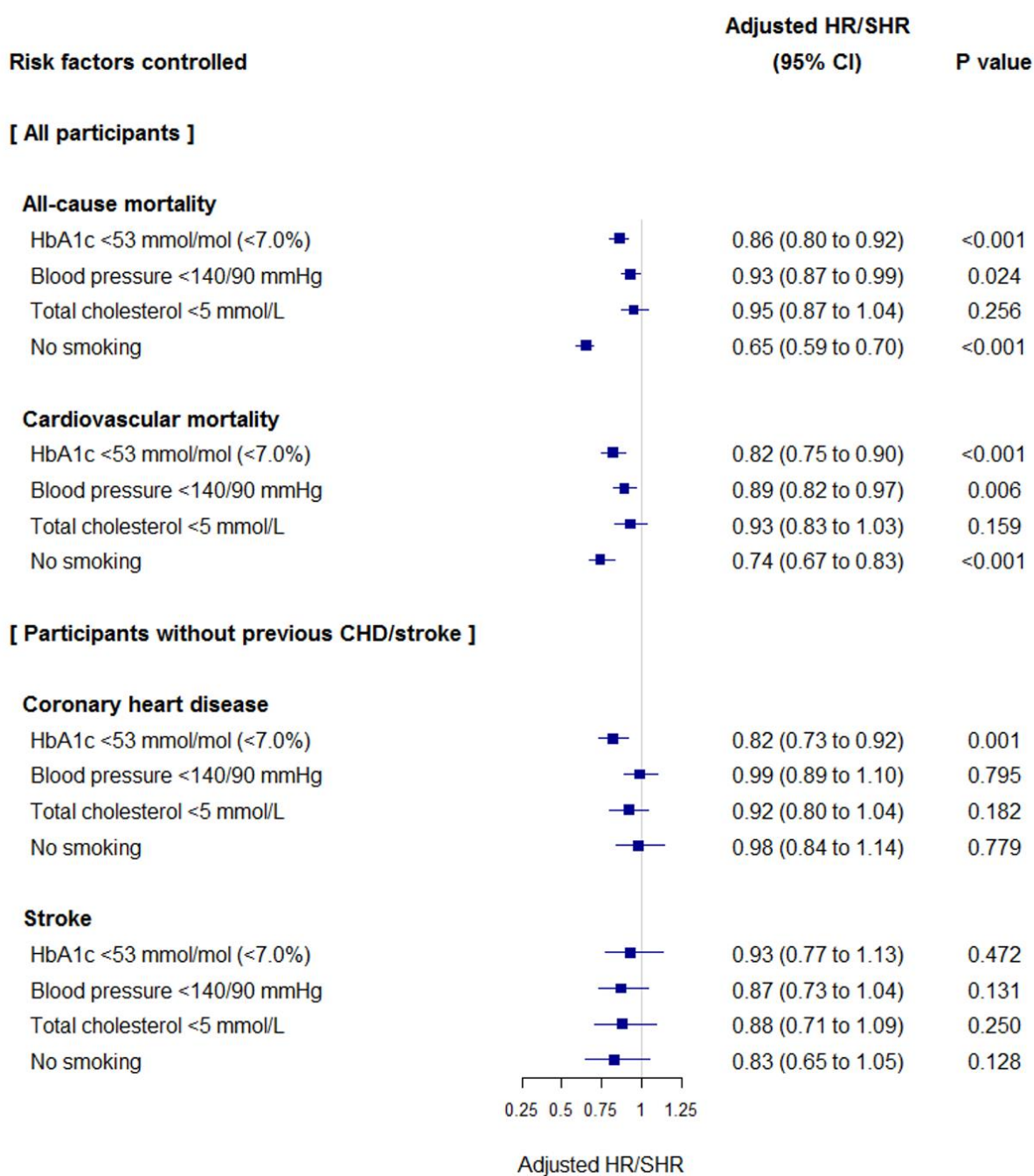
Number of risk factors controlled	HbA1c <53 mmol/mol (<7.0%)	Blood pressure <140/90 mmHg	Total cholesterol <5 mmol/L	No smoking	CKD (N=11,431)			Non-CKD (N=36,429)		
					Overall (N=11,431)	No CVD (N=7,216)	CVD (N=4,215)	Overall (N=36,429)	No CVD (N=28,569)	CVD (N=7,860)
0	–	–	–	–	138 (1)	87 (1)	51 (1)	806 (2)	678 (2)	128 (2)
1	Y	–	–	–	69 (0.6)	46 (0.6)	23 (0.6)	312 (1)	260 (0.9)	52 (0.7)
	–	Y	–	–	89 (0.8)	64 (0.9)	25 (0.6)	759 (2)	624 (2)	135 (2)
	–	–	Y	–	438 (4)	264 (4)	174 (4)	1,742 (5)	1,350 (5)	392 (5)
	–	–	–	Y	831 (7)	597 (8)	234 (6)	2,559 (7)	2,187 (8)	372 (5)
	Y	Y	–	–	62 (0.5)	43 (0.6)	19 (0.5)	304 (0.8)	268 (0.9)	36 (0.5)
2	Y	–	Y	–	245 (2)	152 (2)	93 (2)	794 (2)	590 (2)	204 (3)
	Y	–	–	Y	407 (4)	289 (4)	118 (3)	1,070 (3)	911 (3)	159 (2)
	–	Y	Y	–	390 (3)	215 (3)	175 (4)	1,911 (5)	1,446 (5)	465 (6)
	–	Y	–	Y	531 (5)	379 (5)	152 (4)	2,205 (6)	1,910 (7)	295 (4)
	–	–	Y	Y	2,527 (22)	1,615 (22)	912 (22)	7,004 (19)	5,477 (19)	1,527 (19)
3	Y	Y	Y	–	247 (2)	152 (2)	95 (2)	1,073 (3)	788 (3)	285 (4)
	Y	Y	–	Y	302 (3)	199 (3)	103 (2)	1,067 (3)	905 (3)	162 (2)
	Y	–	Y	Y	1,552 (14)	1,019 (14)	533 (13)	3,487 (10)	2,678 (9)	809 (10)
	–	Y	Y	Y	2,139 (19)	1,228 (17)	911 (22)	7,030 (19)	5,294 (19)	1,736 (22)
4	Y	Y	Y	Y	1,464 (13)	867 (12)	597 (14)	4,306 (12)	3,203 (11)	1,103 (14)

Y, meeting the criterion; –, not meeting the criterion

CKD, chronic kidney disease; CVD, (a history of) cardiovascular diseases

Figure S2. Relative hazards of individual risk factors controlled for mortality and cardiovascular events in (a) participants with chronic kidney disease (CKD) and (b) participants with non-CKD. Hazard ratios (HRs) for all-cause mortality and subdistribution hazard ratios (SHRs) for cardiovascular mortality, coronary heart disease, and stroke were adjusted for age, gender, CKD stage (for CKD cohort), body mass index, deprivation level, duration of diabetes, proteinuria status, a history of cardiovascular diseases (for mortality evaluation), prescribing of antidiabetic, antihypertensive, statins and antiplatelet drugs, and index year.

(a) CKD



(b) Non-CKD

