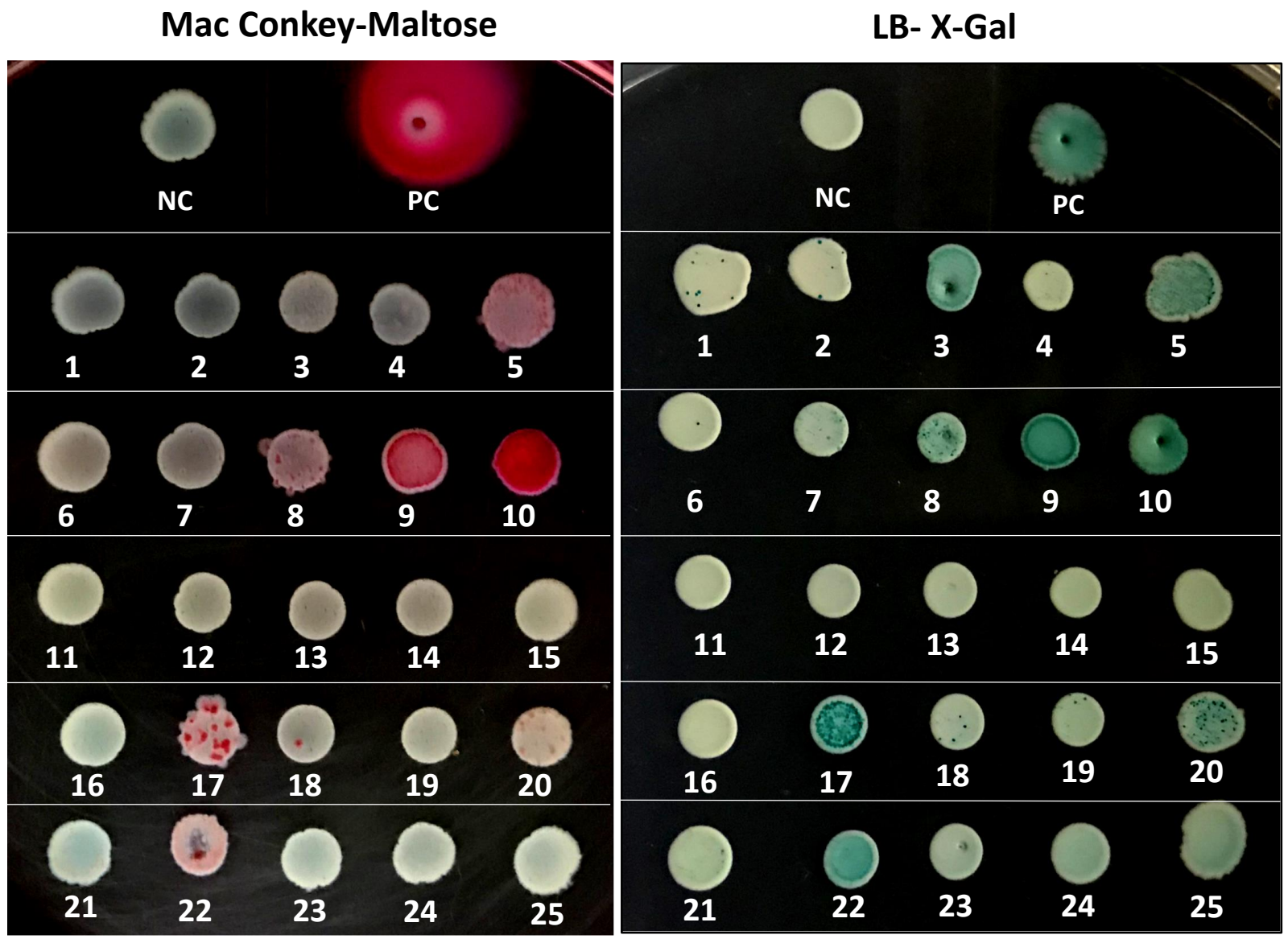


Fig. S1 Keys for each circle: C: T25 only (control) S_C: T25-NifS U_C: T25-NifU U_N: NifU-T25 1492_C: T25-HP1492 (Nfu)

Iron-sulfur protein maturation in *Helicobacter pylori*: identifying a Nfu-type cluster carrier protein and its iron-sulfur protein targets. (Benoit *et al.* 2018). Supplemental Figure S2: additional BACTH interactions.



| # | T18-Fusion protein | T25-Fusion protein |
|----|--------------------|--------------------|
| 1 | Nfu (HP1492)-T18 | T25 |
| 2 | Nfu (HP1492)-T18 | T25-NifS |
| 3 | Nfu (HP1492)-T18 | T25-NifU |
| 4 | Nfu (HP1492)-T18 | NifU-T25 |
| 5 | Nfu (HP1492)-T18 | T25-Nfu (HP1492) |
| 6 | T18-HP0207 | T25 |
| 7 | T18-HP0207 | T25-NifS |
| 8 | T18-HP0207 | T25-NifU |
| 9 | T18-HP0207 | NifU-T25 |
| 10 | T18-HP0207 | T25-Nfu(HP1492) |
| 11 | T18-HP0269 | T25 |
| 12 | T18-HP0269 | T25-NifS |
| 13 | T18-HP0269 | T25-NifU |
| 14 | T18-HP0269 | NifU-T25 |
| 15 | T18-HP0269 | T25-Nfu (HP1492) |
| 16 | T18 | T25-AcnB (HP0779) |
| 17 | T18-NifS | T25-AcnB (HP0779) |
| 18 | T18-NifU | T25-AcnB (HP0779) |
| 19 | T18-Nfu(HP1492) | T25-AcnB (HP0779) |
| 20 | Nfu (HP1492)-T18 | T25-AcnB (HP0779) |
| 21 | T18 | AcnB (HP0779)-T25 |
| 22 | T18-NifS | AcnB (HP0779)-T25 |
| 23 | T18-NifU | AcnB (HP0779)-T25 |
| 24 | T18-Nfu(HP1492) | AcnB (HP0779)-T25 |
| 25 | Nfu (HP1492)-T18 | AcnB (HP0779)-T25 |

NC: (kit) Negative Control (T18 only/T25 only); PC: Positive Control (T18-zip/T25-zip)