

Supplementary Information (full-length images)

Rivaroxaban does not influence hemorrhagic transformation in a diabetes ischemic stroke and endovascular thrombectomy model

Feng-Di Liu^{a,†}, Rong Zhao^{a,†}, Xiao-Yan Feng^{b,†}, Yan-Hui Shi^{a,†}, Yi-Lan Wu^a, Xiao-Lei Shen^a, Ge-Fei Li^a, Yi-Sheng Liu^a, Ying Zhao^a, Xin-Wei He^a, Jia-Wen Yin^a, Mei-Ting Zhuang^a, Bing-Qiao Zhao^{c,*}, Jian-Ren Liu^{a,*}

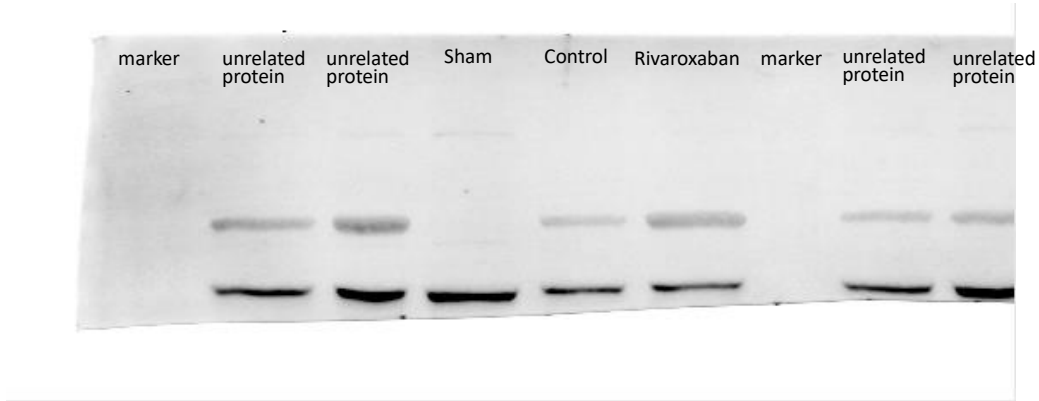
β -actin (2016-4-1)



occludin (2016-4-8)



Full-length blots (2016-4-8): HIF & occludin



β -actin (2016-1-21)



Full-length gel (2016-1-27): MMPs

