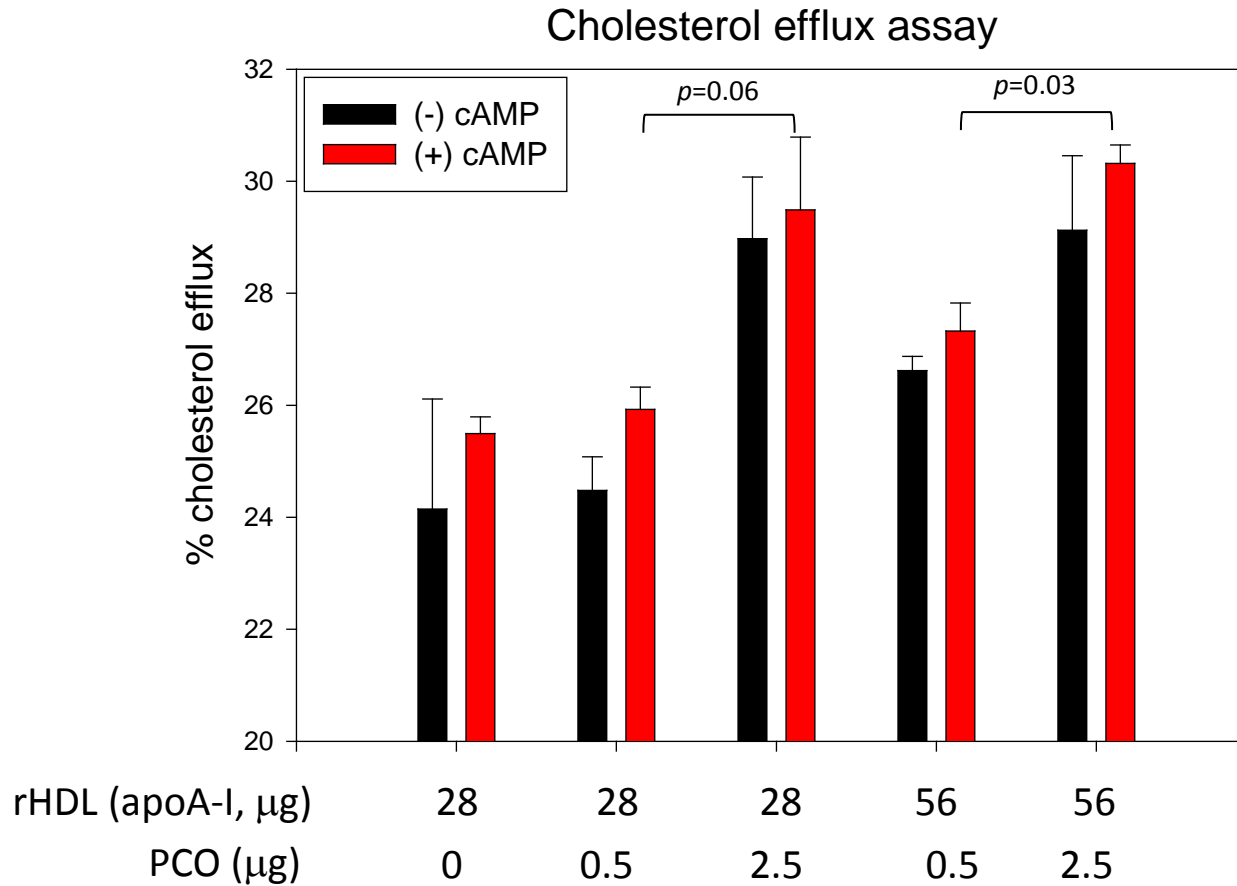
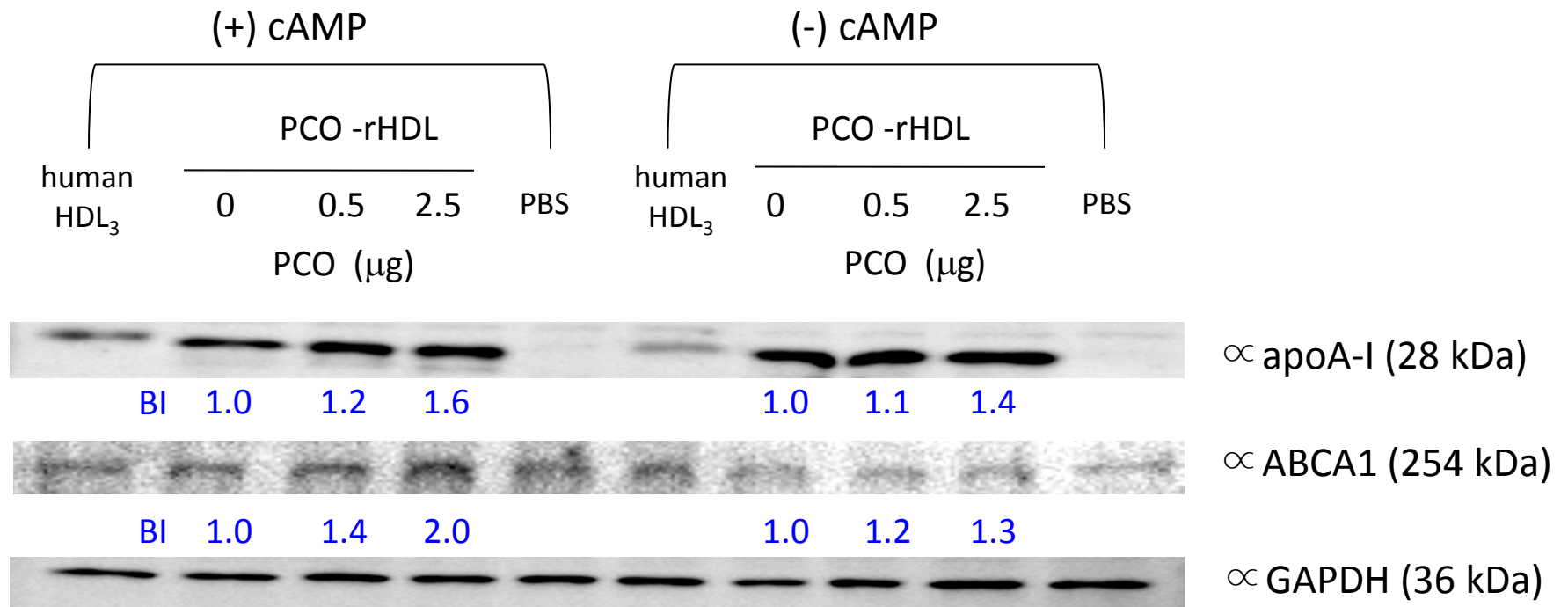


Suppl. Fig. 1A



Cholesterol efflux activity of rHDL containing apoA-I and policosanol. Macrophages were treated with radiolabeled cholesterol. The isotope amount of cholesterol taken up into cells was quantified, as detailed in the text.

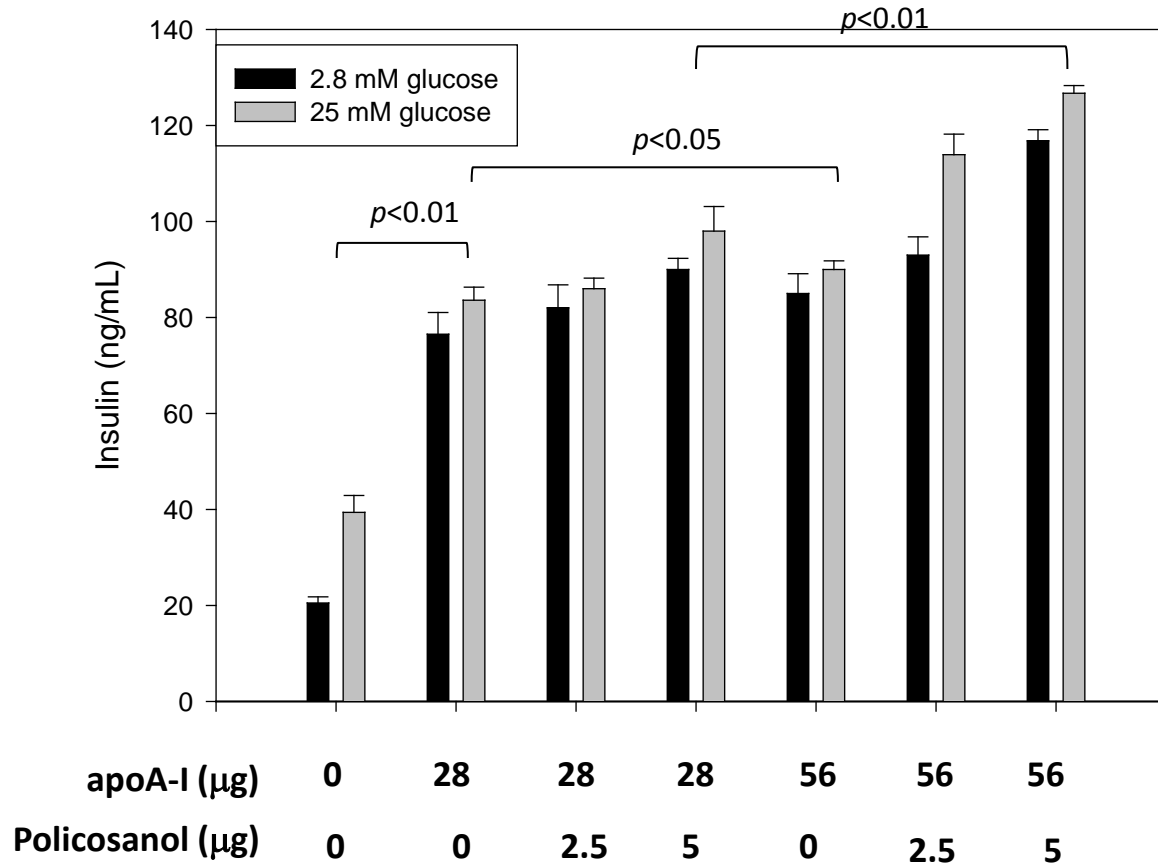
Suppl. Fig. 1B



Immunodetection of apoA-I and ABCA-1 in cell lysate after treatment with rHDL. BI, band intensity.

Suppl. Fig. 2

Insulin secretion (INS-1 cell)



Insulin secretion activity of rHDL containing policosanol.

Rat insulinoma cells (INS-1) were incubated for 2 hrs in the presence of rHDL with or without policosanol (final concentration of 2.5-5 mg in media) at different glucose concentrations (final concentration of 2.8 or 25 mM in culture medium). Insulin levels in medium were quantified using a radioimmunoassay kit. Results are expressed as the mean – standard deviation (SD) from three independent experiments with duplicate samples.