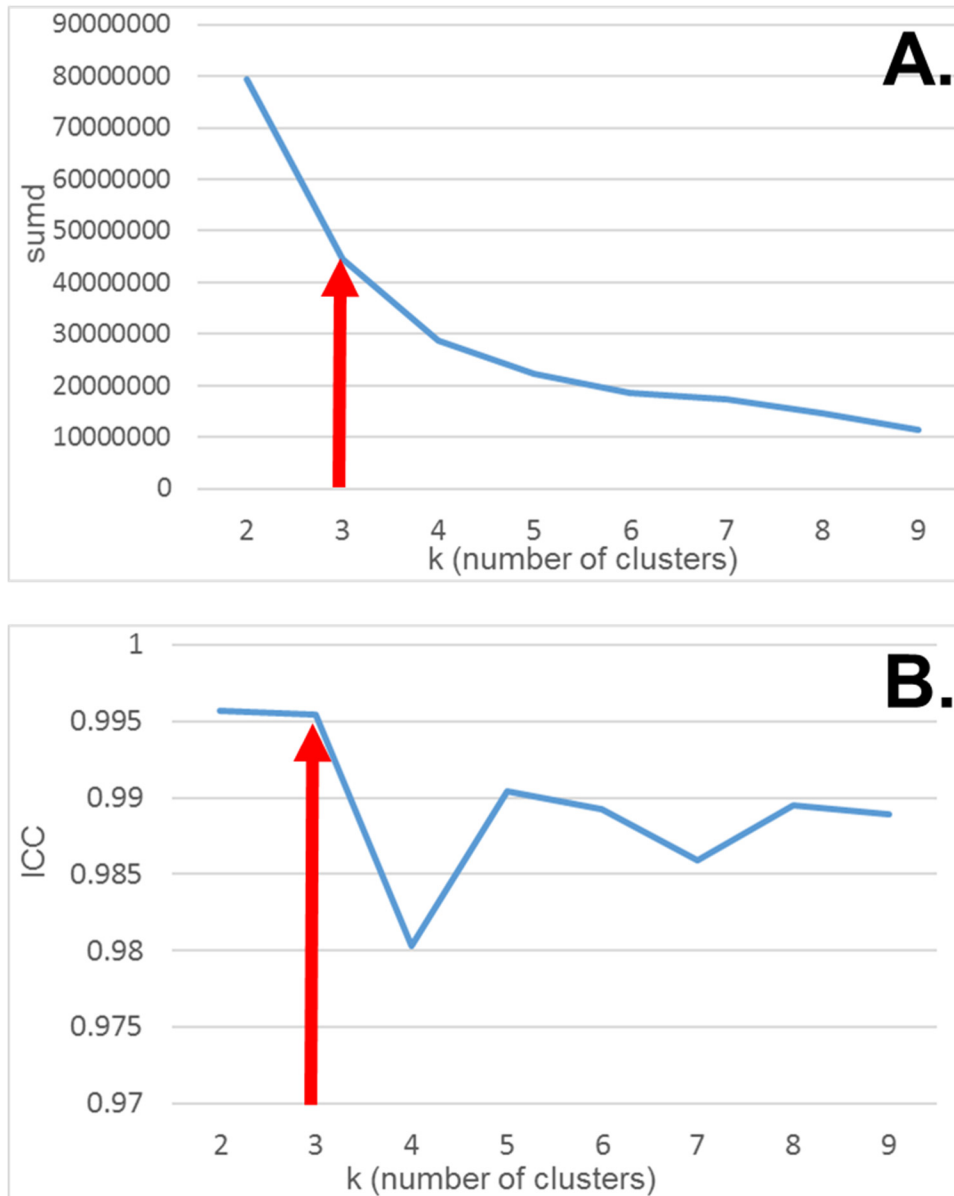
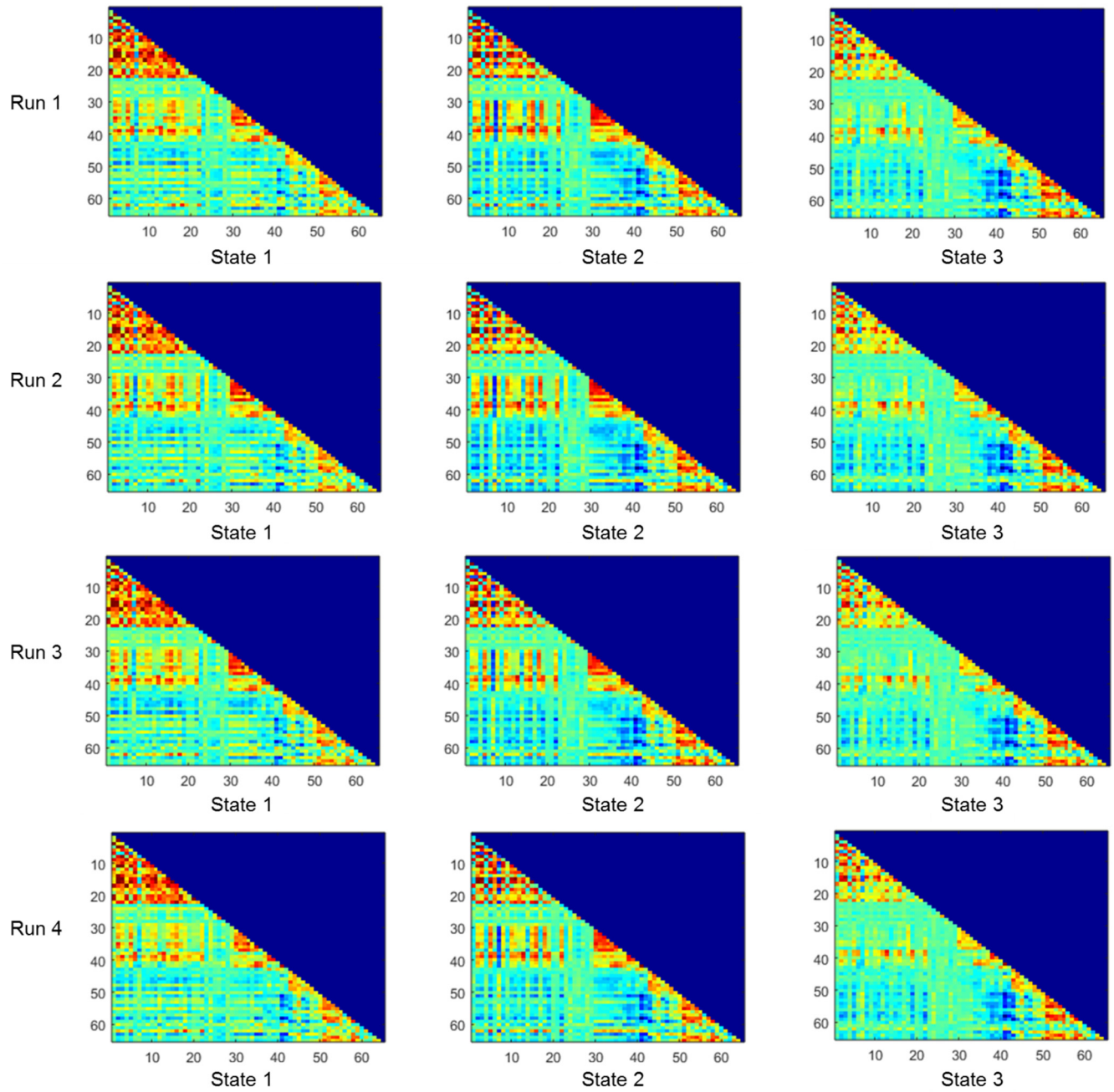


## Dynamic Functional Connectivity States Reflecting Psychotic-Like Experiences

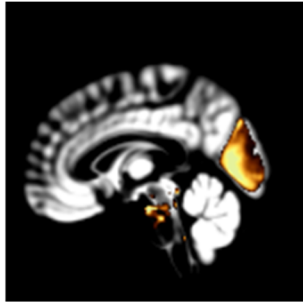
### Supplemental Information



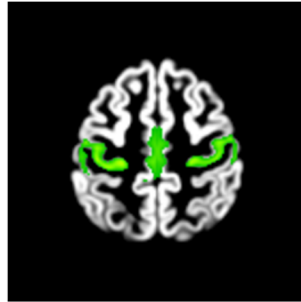
**Figure S1.** Summary Measures of Centroid Distance and Centroid Reliability for  $k = 2 \dots 9$  Cluster Solutions. (A.) Within-Cluster Sums of Each Timepoint's Euclidean Distance to Centroid (sumd) for each of the  $k$ -Cluster Solutions. (B.) Mean Intraclass Correlation (ICC) Averaged Over the  $k$ -States for Each of the  $k$ -Cluster Solutions. The Red Arrow Points to the Value at  $k = 3$ , the Optimal Solution.



**Figure S2.** State Centroids for Each of the Four Resting-State Runs.



Visual (VN)



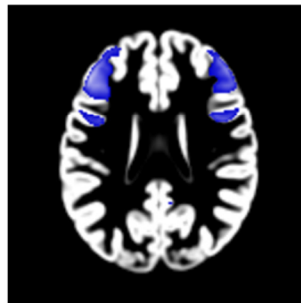
Somatomotor (SMN)



Dorsal Attention (DAN)



Ventral Attention (VAN)



Frontoparietal (FPN)



Default Mode (DMN)

**Figure S3.** Network Maps. Each Network Map Represents the Average of All Thresholded Component Maps Classified as that Network.

**Table S1.** Mean Network Connectivity Values for Each State and Each Network Pair. All Timepoints Classified as Each State were First Averaged Across All Connections Within Each Network Pair and Then Averaged Across Participants.

		<b>state</b>		
<b>network 1</b>	<b>network 2</b>	<b>1</b>	<b>2</b>	<b>3</b>
VN	VN	0.16	0.12	0.11
VN	SMN	0.08	0.07	0.01
VN	DAN	0.16	0.14	0.12
VN	VAN	0.02	0.08	0.05
VN	FPN	-0.06	-0.05	-0.02
VN	DMN	0.00	-0.05	-0.05
SMN	SMN	0.31	0.34	0.27
SMN	DAN	0.12	0.17	0.02
SMN	VAN	0.18	0.25	0.14
SMN	FPN	-0.07	-0.10	-0.06
SMN	DMN	0.01	-0.07	0.00
DAN	DAN	0.38	0.43	0.41
DAN	VAN	0.06	0.19	0.13
DAN	FPN	-0.03	-0.06	0.01
DAN	DMN	-0.05	-0.14	-0.15
VAN	VAN	0.53	0.58	0.57
VAN	FPN	0.00	-0.06	-0.01
VAN	DMN	-0.15	-0.21	-0.21
FPN	FPN	0.20	0.22	0.21
FPN	DMN	-0.01	0.03	-0.01
DMN	DMN	0.16	0.20	0.21