

Note to readers with disabilities: *EHP* strives to ensure that all journal content is accessible to all readers. However, some figures and Supplemental Material published in *EHP* articles may not conform to [508 standards](#) due to the complexity of the information being presented. If you need assistance accessing journal content, please contact ehp508@niehs.nih.gov. Our staff will work with you to assess and meet your accessibility needs within 3 working days.

Supplemental Material

Variation in DNA-Damage Responses to an Inhalational Carcinogen (1,3-Butadiene) in Relation to Strain-Specific Differences in Chromatin Accessibility and Gene Transcription Profiles in C57BL/6J and CAST/EiJ Mice

Grace A. Chappell, Jennifer W. Israel, Jeremy M. Simon, Sebastian Pott, Alexias Safi, Karl Eklund, Kenneth G. Sexton, Wanda Bodnar, Jason D. Lieb, Gregory E. Crawford, Ivan Rusyn, and Terrence S. Furey

Table of Contents

Figure S1. Air concentration of 1,3-butadiene inside the inhalation chamber. Data are presented as mean \pm SD.

Figure S2. MA plot showing the average expression level and fold-change of each gene in CAST/EiJ control relative to C57BL/6J control. Genes with significantly higher expression in CAST/EiJ relative to C57BL/6J at an FDR of 10% are green, whereas genes with significantly higher expression in C57BL/6J relative to CAST/EiJ at an FDR of 10% are blue. Nonsignificant genes are in gray.

Figure S3. Motif enrichments in differentially accessible regions (DARs) in clean air-exposed CAST/EiJ relative to C57BL/6J.

Figure S4. MA plot showing the average expression level and fold-change of each gene in CAST/EiJ control relative to CAST/EiJ exposed to 1,3-butadiene (BD). Genes with significantly higher expression in CAST/EiJ control relative to CAST/EiJ exposed at an FDR of 10% are green, whereas genes with significantly higher expression in CAST/EiJ exposed relative to CAST/EiJ control at an FDR of 10% are orange. Nonsignificant genes are in gray.

Figure S5. MA plot showing the average expression level and fold-change of each gene in C57BL/6J control relative to C57BL/6J exposed to 1,3-butadiene (BD). Genes with significantly higher expression in C57BL/6J control relative to C57BL/6J exposed at an FDR of 10% are blue, whereas genes with significantly higher expression in C57BL/6J exposed relative to C57BL/6J control at an FDR of 10% are red. Nonsignificant genes are in gray.

Figure S6. Motif enrichments in differentially accessible regions (DARs) in 1,3-butadiene-exposed mice C57BL/6J relative to clean air-exposed control mice.

Figure S7. Chromatin accessibility and target gene expression at distal regions containing the Sp1 motif (A) On average, distal regions containing the Sp1 motif decrease in chromatin accessibility following 1,3-butadiene (BD) exposure in C57BL/6J to more closely resemble those regions in CAST/EiJ. (B) Similarly, genes associated with these regions also decrease in expression following BD exposure in C57BL/6J.

Table S1. Sequencing statistics.

Table S2. Differential mRNA expression analysis results, as determined by DESeq2.

Table S3. Pathway enrichment based on gene expression profiles in the lung of CAST/EiJ mice exposed to clean air compared to that of C57BL/6J mice, using GSAA and the REACTOME database.

Table S4. Differential miRNA expression analysis results, as determined by DESeq2, and denotation of master regulators of mRNA expression as determined by miRhub analysis.

Table S5. Differential ATAC-seq chromatin accessibility analysis results, as determined by DESeq2.

Table S6. Pathway enrichment based on chromatin accessibility profiles in the lung of CAST/EiJ mice exposed to clean air compared to that of C57BL/6J mice exposed to clean air, using GSAA and the REACTOME database.

Table S7. Pathway enrichment based on gene expression profiles in the lung of CAST/EiJ mice exposed to 1,3-butadiene compared to that of CAST/EiJ mice exposed to clean air, using GSAA and the REACTOME database.

Table S8. Pathway enrichment based on gene expression profiles in the lung of C57BL/6J mice exposed to 1,3-butadiene compared to that of C57BL/6J mice exposed to clean air, using GSAA and the REACTOME database.

Table S9. Geneset enrichment based on 719 genes linked to one of the 2,188 proximal SP1-containing DARs between C57BL/6J and CAST/EiJ at baseline, using GSAA and the REACTOME database.

Table S10. Pathway enrichment based on differentially expressed genes and/or differentially accessible regions (DARs) in the lung of C57BL/6J mice exposed to 1,3 butadiene compared to C57BL/6J mice exposed to clean air, grouped by their patterns of expression/accessibility across both strains and conditions (**Figure 5**).

Additional File - Excel Document

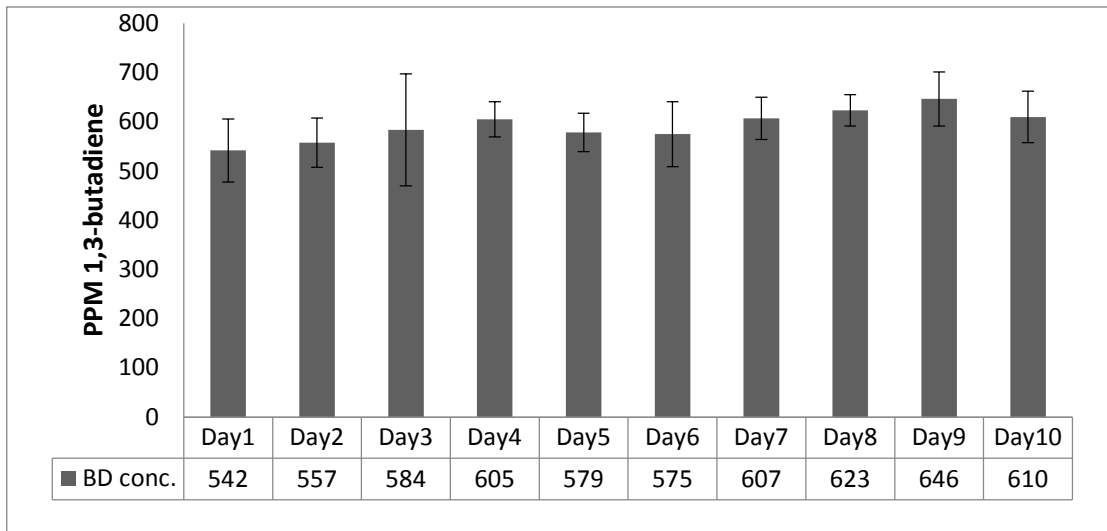


Figure S1. Air concentration of 1,3-butadiene inside the inhalation chamber. Data are presented as mean \pm SD.

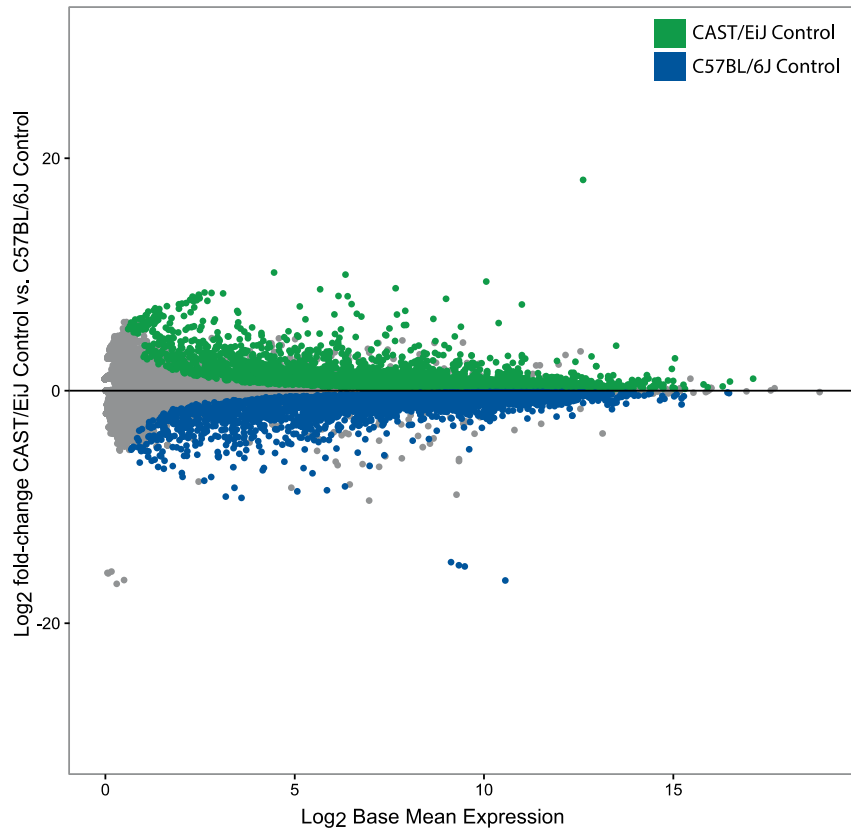


Figure S2. MA plot showing the average expression level and fold-change of each gene in CAST/EiJ control relative to C57BL/6J control. Genes with significantly higher expression in CAST/EiJ relative to C57BL/6J at an FDR of 10% are green, whereas genes with significantly higher expression in C57BL/6J relative to CAST/EiJ at an FDR of 10% are blue. Nonsignificant genes are in gray.

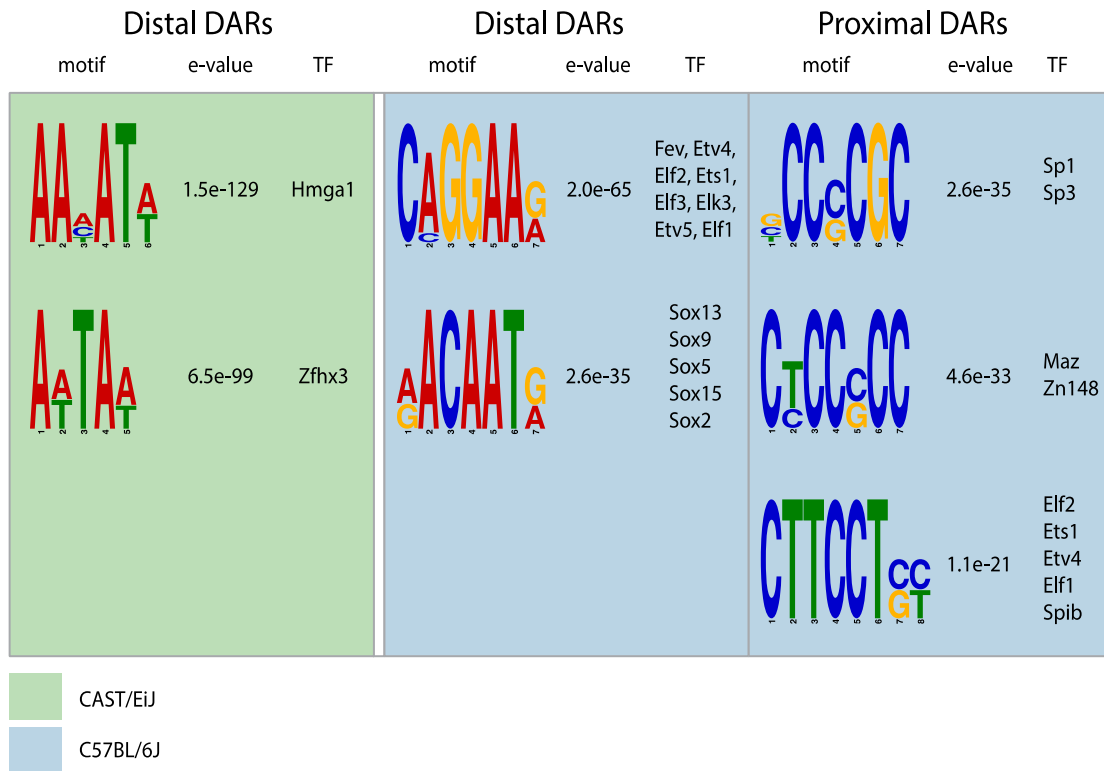


Figure S3. Motif enrichments in differentially accessible regions (DARs) in clean air-exposed CAST/EiJ relative to C57BL/6J.

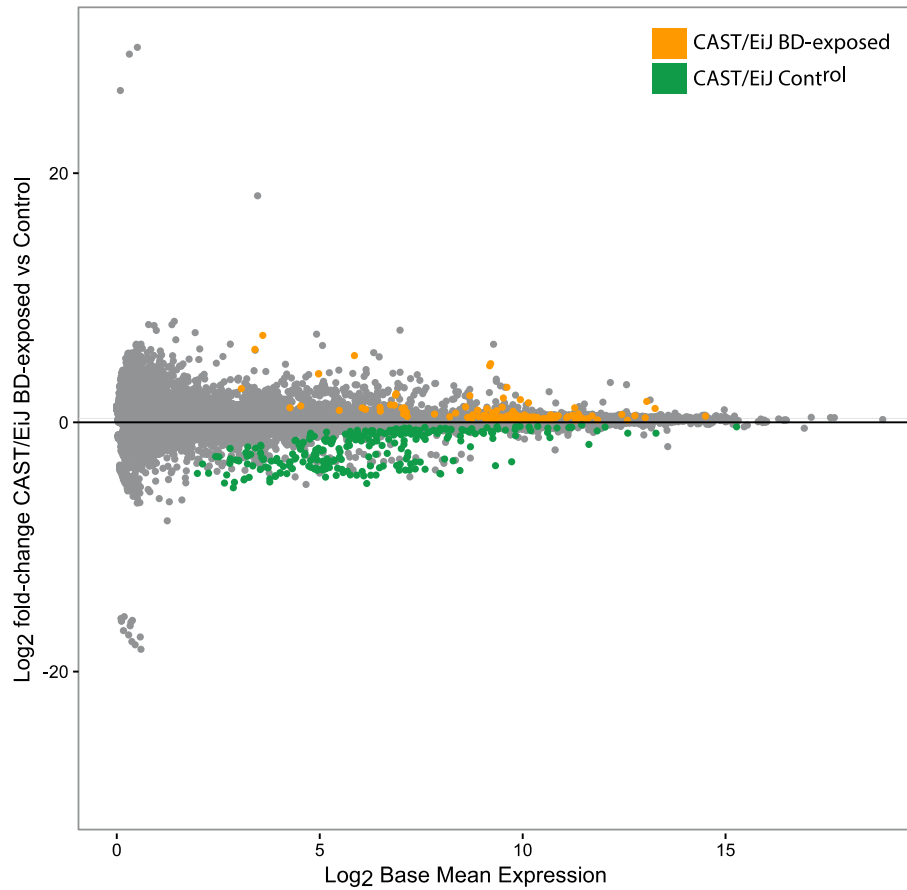


Figure S4. MA plot showing the average expression level and fold-change of each gene in CAST/EiJ control relative to CAST/EiJ exposed to 1,3-butadiene (BD). Genes with significantly higher expression in CAST/EiJ control relative to CAST/EiJ exposed at an FDR of 10% are green, whereas genes with significantly higher expression in CAST/EiJ exposed relative to CAST/EiJ control at an FDR of 10% are orange. Nonsignificant genes are in gray.

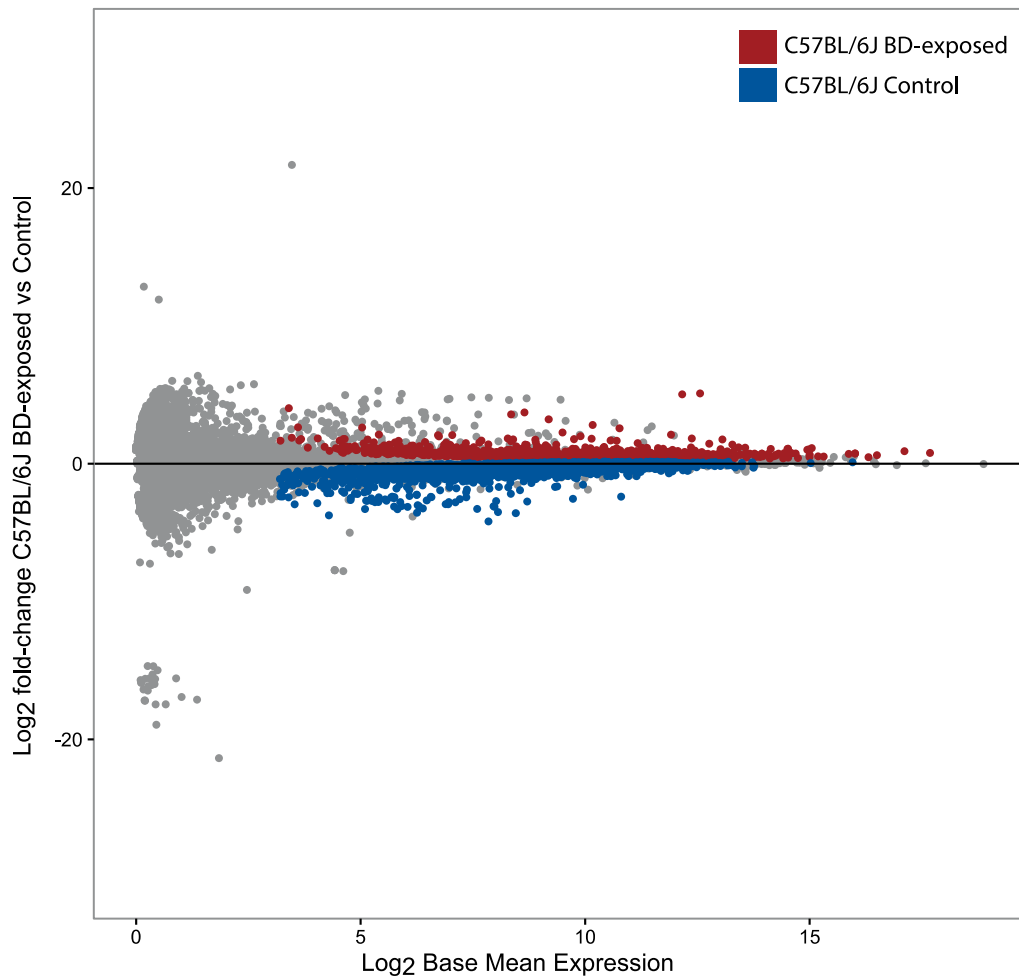


Figure S5. MA plot showing the average expression level and fold-change of each gene in C57BL/6J control relative to C57BL/6J exposed to 1,3-butadiene (BD). Genes with significantly higher expression in C57BL/6J control relative to C57BL/6J exposed at an FDR of 10% are blue, whereas genes with significantly higher expression in C57BL/6J exposed relative to C57BL/6J control at an FDR of 10% are red. Nonsignificant genes are in gray.

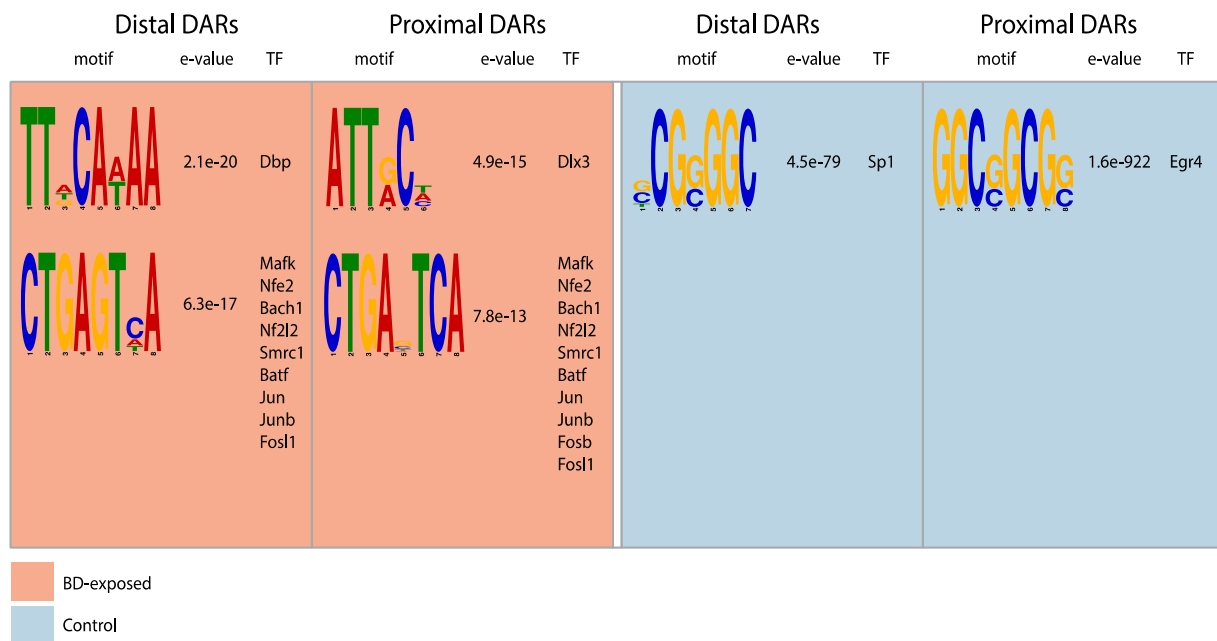


Figure S6. Motif enrichments in differentially accessible regions (DARs) in 1,3-butadiene-exposed mice C57BL/6J relative to clean air-exposed control mice.

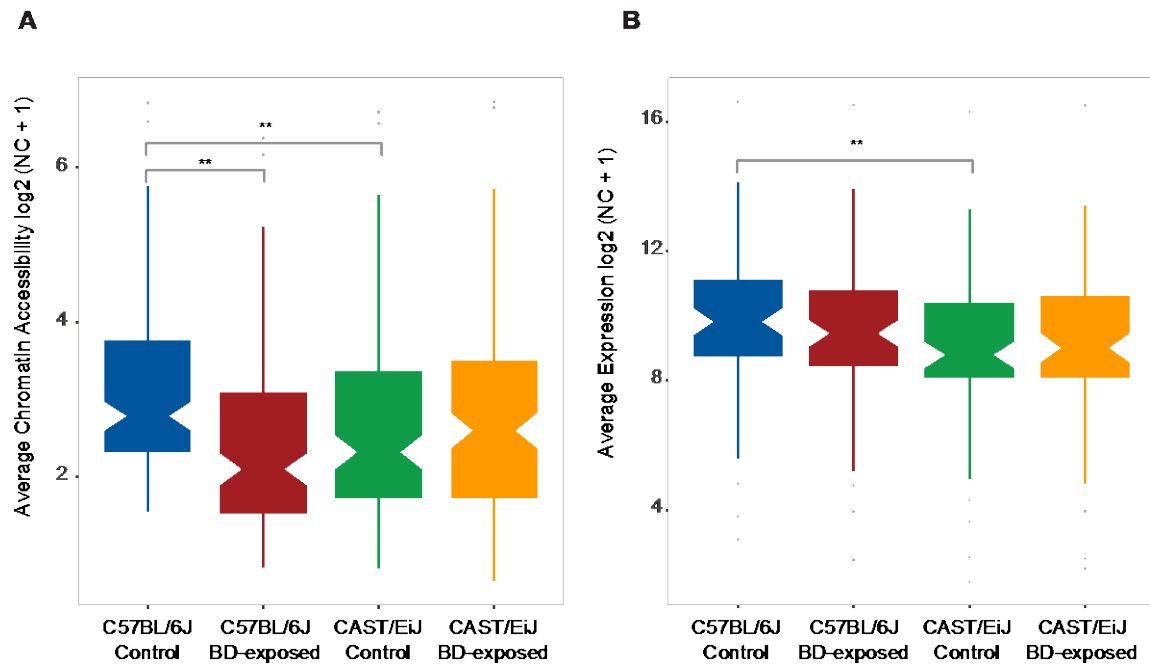


Figure S7. Chromatin accessibility and target gene expression at distal regions containing the Sp1 motif (A) On average, distal regions containing the Sp1 motif decrease in chromatin accessibility following 1,3-butadiene (BD) exposure in C57BL/6J to more closely resemble those regions in CAST/EiJ. (B) Similarly, genes associated with these regions also decrease in expression following BD exposure in C57BL/6J.

Excel Table S1. Sequencing statistics.

Excel Table S2. Differential mRNA expression analysis results, as determined by DESeq2.

Excel Table S3. Pathway enrichment based on gene expression profiles in the lung of CAST/EiJ mice exposed to clean air compared to that of C57BL/6J mice, using GSAA and the REACTOME database.

Excel Table S4. Differential miRNA expression analysis results, as determined by DESeq2, and denotation of master regulators of mRNA expression as determined by miRhub analysis.

Excel Table S5. Differential ATAC-seq chromatin accessibility analysis results, as determined by DESeq2.

Excel Table S6. Pathway enrichment based on chromatin accessibility profiles in the lung of CAST/EiJ mice exposed to clean air compared to that of C57BL/6J mice exposed to clean air, using GSAA and the REACTOME database.

Excel Table S7. Pathway enrichment based on gene expression profiles in the lung of CAST/EiJ mice exposed to 1,3-butadiene compared to that of CAST/EiJ mice exposed to clean air, using GSAA and the REACTOME database.

Excel Table S8. Pathway enrichment based on gene expression profiles in the lung of C57BL/6J mice exposed to 1,3-butadiene compared to that of C57BL/6J mice exposed to clean air, using GSAA and the REACTOME database.

Excel Table S9. Geneset enrichment based on 719 genes linked to one of the 2,188 proximal SP1-containing DARs between C57BL/6J and CAST/EiJ at baseline, using GSAA and the REACTOME database.

Excel Table S10. Pathway enrichment based on differentially expressed genes and/or differentially accessible regions (DARs) in the lung of C57BL/6J mice exposed to 1,3 butadiene compared to C57BL/6J mice exposed to clean air, grouped by their patterns of expression/accessibility across both strains and conditions (**Figure 5**).