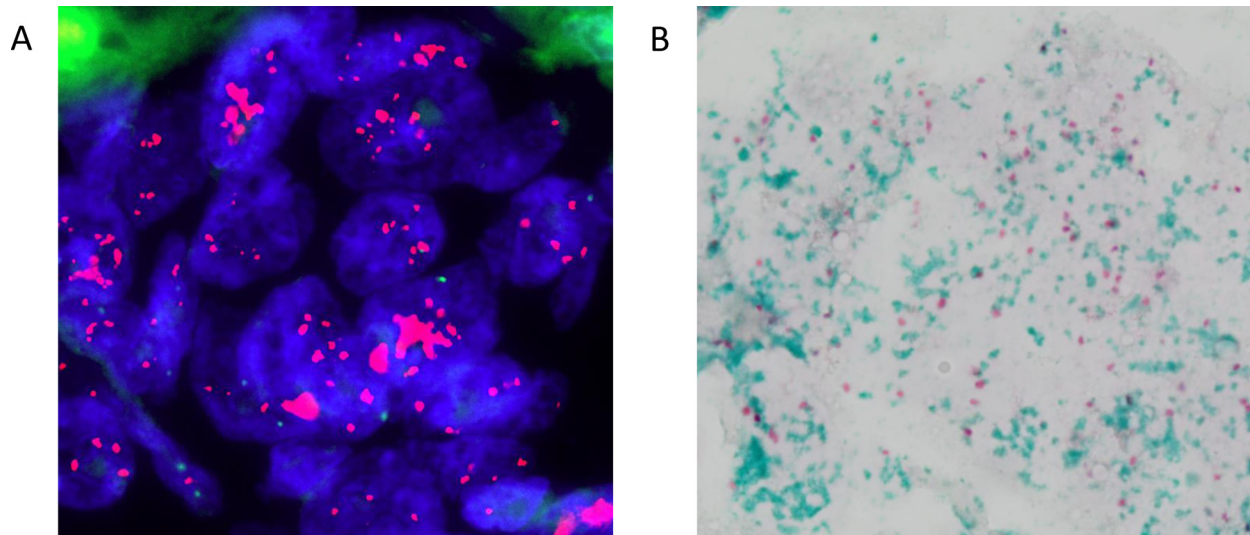


## Clinical application of targeted next-generation sequencing for colorectal cancer patients: a multicentric Belgian experience

### SUPPLEMENTARY MATERIALS



**Supplementary Figure 1: cases suggestive of a gene amplification were confirmed by ISH. (A) ERBB2 amplified case (dual color FISH – green: CEP17/red : ERBB2 gene – original magnification  $\times 1000$ ). (B) EGFR amplified case (dual color CISH – red: CEP7/green: EGFR gene – original magnification:  $\times 1000$ ).**