

SUPPLEMENTARY FIGURES AND TABLES

Article title: The PDGF pathway in breast cancer is linked to tumour aggressiveness, triple-negative subtype and early recurrence

Journal name: Breast Cancer Research and Treatment

Authors: Sara Jansson*, Kristina Aaltonen, Pär-Ola Bendahl, Anna-Karin Falck, Maria Karlsson, Kristian Pietras and Lisa Rydén

***Corresponding author:** Sara Jansson, email: sara.jansson@med.lu.se, affiliation: Lund University, Division of Oncology and Pathology, Department of Clinical Sciences Lund, Medicon Village, SE-223 81 Lund, Sweden

Table S1 Correlations between expression of ligand PDGF-CC and PDGF-receptors α and β

		PDGFR α in tumour cells	PDGFR α in stroma	PDGFR β in stroma	PDGF-CC in tumour cells
PDGFR α in tumour cells	Pearson Correlation	1	-.010	.077	.263**
	Sig. (2-tailed)		.820	.094	.000
	N	501	482	474	473
PDGFR α in stroma	Pearson Correlation		1	.200**	.142**
	Sig. (2-tailed)			.000	.002
	N		489	468	466
PDGFR β in stroma	Pearson Correlation			1	.116*
	Sig. (2-tailed)				.013
	N			480	463
PDGF-CC in tumour cells	Pearson Correlation				1
	Sig. (2-tailed)				
	N				483
**. Correlation is significant at the 0.01 level (2-tailed).					
*. Correlation is significant at the 0.05 level (2-tailed).					

Table S2 Odds ratio (OR) of concomitant ligand and receptor expression in relation to tumour and patient characteristics

Biomarker expression	All patients N=550	PDGFR α in tumour cells + PDGF-CC in tumour cells	PDGFR α in stroma + PDGF-CC in tumour cells	PDGFR β in stroma + PDGF-CC in tumour cells
	N (%)	OR (95% CI)	OR (95% CI)	OR (95% CI)
Age (median)				
<50	110 (20)	1.0	1.0	1.0
\geq 50	440 (80)	0.35 (0.18-0.69)	0.27 (0.15-0.47)	0.22 (0.11-0.43)
T-size				
\leq 20 mm	366 (67)	1.0	1.0	1.0
>20 mm	179 (33)	NS	1.96 (1.15-3.35)	NS
Node status				
N0	319 (60)	1.0	1.0	1.0
N+	215 (40)	NS	NS	NS
NHG				
I	118 (22)	1.0	1.0	1.0
II	287 (54)	NS	NS	NS
III	129 (24)	5.3 (1.78-15.97)	6.83 (2.91-16.01)	7.82 (2.28-26.86)
Ki67				
Low (\leq 20)	335 (67)	1.0	1.0	1.0
High (>20)	165 (33)	6.18 (3.0-12.73)	7.66 (4.17-14.07)	11.78 (4.78-29.06)
St Gallen subtype				
Luminal A	193 (41)	1.0	1.0	1.0
Luminal B HER2-	153 (32)	NS	4.2 (1.62-10.86)	6.50 (1.83-23.07)
Luminal B HER2+	79 (17)	NS	6.06 (2.21-16.61)	5.95 (1.50-23.65)
HER2-type	15 (3)	NS	25.57 (6.56-99.67)	10.06 (1.53-66.04)
TNBC	33 (7)	9.84 (3.53-27.44)	20.41 (6.96-59.91)	16.89 (4.10-69.59)
ER				
Neg	57 (11)	1.0	1.0	1.0

Pos	449 (89)	0.30 (0.14-0.64)	0.11 (0.06-0.21)	0.25 (0.12-0.54)
PR				
Neg	108 (23)	1.0	1.0	1.0
Pos	367 (77)	0.29 (0.15-0.56)	0.19 (0.10-0.33)	0.22 (0.11-0.45)
EGFR				
Neg	419 (83)	1.0	1.0	1.0
Pos	84 (17)	4.3 (2.18-8.48)	7.30 (4.09-13.02)	5.56 (2.73-11.36)
CK5/6				
Neg	378 (75)	1.0	1.0	1.0
Pos	124 (25)	4.25 (2.20-8.24)	3.11 (1.79-5.39)	2.68 (1.33-5.40)
HER2				
Neg	440 (88)	1.0	1.0	1.0
Pos	62 (12)	NS	2.72 (1.50-4.94)	NS

NS = not significant.

Table S3 Cox univariable and multivariable regression analysis to evaluate the survival effect of PDGF-CC expression in terms of 5-year DRFi, adjusted for important clinicopathological factors

	Univariable		Multivariable	
	HR	<i>P</i>	HR	<i>P</i>
Age (per year)				
<50 years	1.00		1.00	
≥50 years	0.79 (0.45-1.38)	0.40	0.95 (0.50-1.78)	0.86
Tumour size				
<20 mm	1.00		1.00	
≥20 mm	3.96 (2.40-6.53)	<0.001	2.52 (1.40-4.54)	0.002
Node				
N0	1.00		1.00	
N+	4.28 (2.48-7.37)	<0.001	3.15 (1.70-5.84)	<0.001
NHG				
I	1.00		1.00	
II	3.40 (1.20-9.62)	0.02	3.80 (0.89-16.28)	0.07
III	7.72 (2.64-21.39)	<0.001	5.14 (1.15-22.96)	0.03
St Gallen subtype				
Luminal A	1.00		1.00	
Luminal B HER2-	3.23 (1.54-6.75)	0.002	2.15 (0.97-4.77)	0.06
Luminal B HER2+	4.49 (2.06-9.81)	<0.001	2.52 (1.07-5.93)	0.03
HER2-Type	2.61 (0.57-11.93)	0.22	0.58 (0.07-4.87)	0.61
TNBC	5.57 (2.20-14.11)	<0.001	2.57 (0.83-7.98)	0.10
PDGF-CC				
Negative	1.00		1.00	
Positive	1.77 (1.03-3.04)	0.04	1.14 (0.59-2.19)	0.70

Fig. S1a-c Relation between expression levels of the PDGF-receptors and of ligand PDGF-CC.

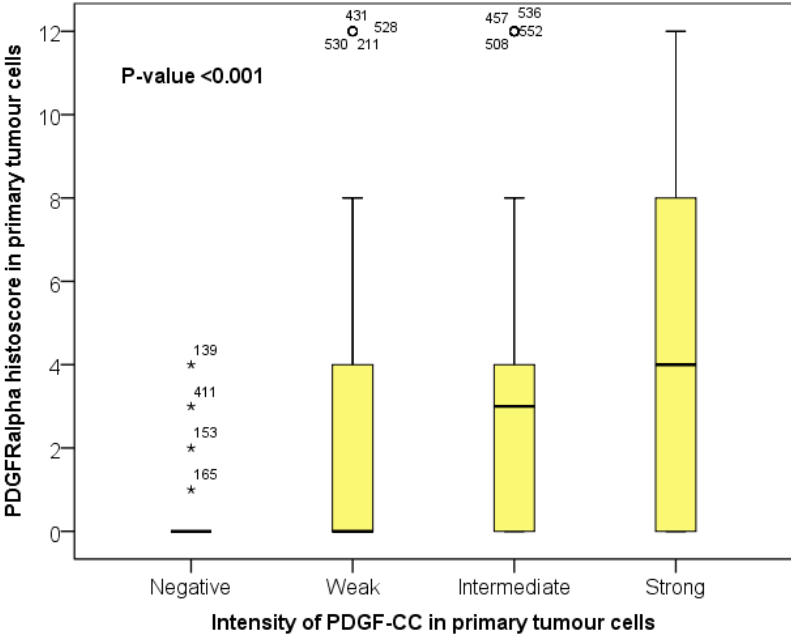


Fig. S1a PDGFRα in tumour cells vs PDGF-CC. *P*-value from Jonckheere Terpstra test

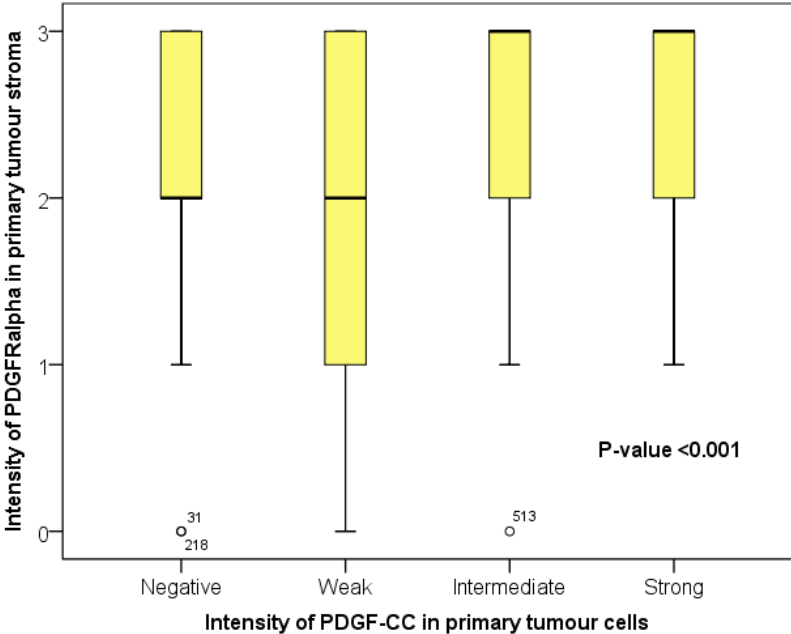


Fig. S1b PDGFRα in tumour stroma vs PDGF-CC. *P*-value from Jonckheere Terpstra test

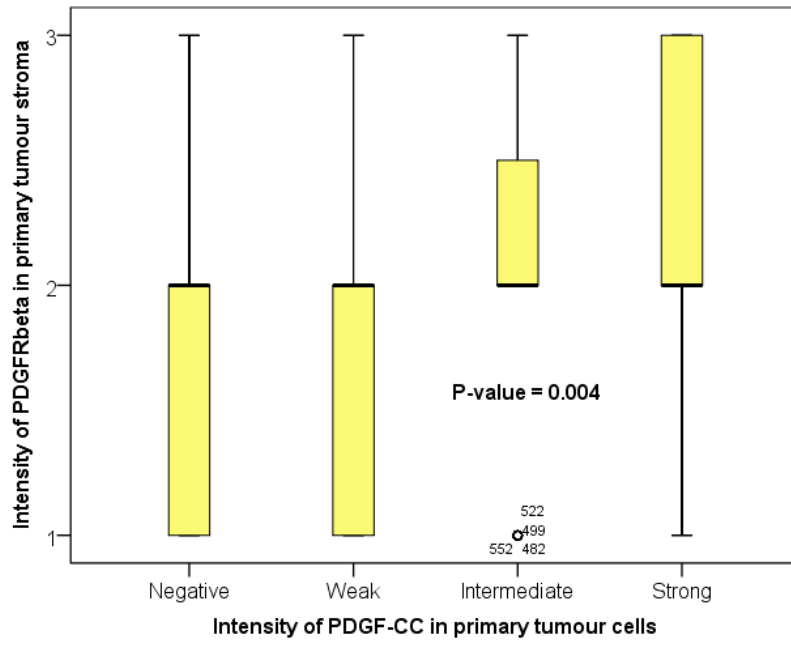


Fig. S1c PDGFR β in tumour stroma vs PDGF-CC. *P*-value from Jonckheere Terpstra test

Fig. S2a-c Kaplan-Meier survival curves showing DRFi (years) in relation to biomarker expression. P-values from log rank test

