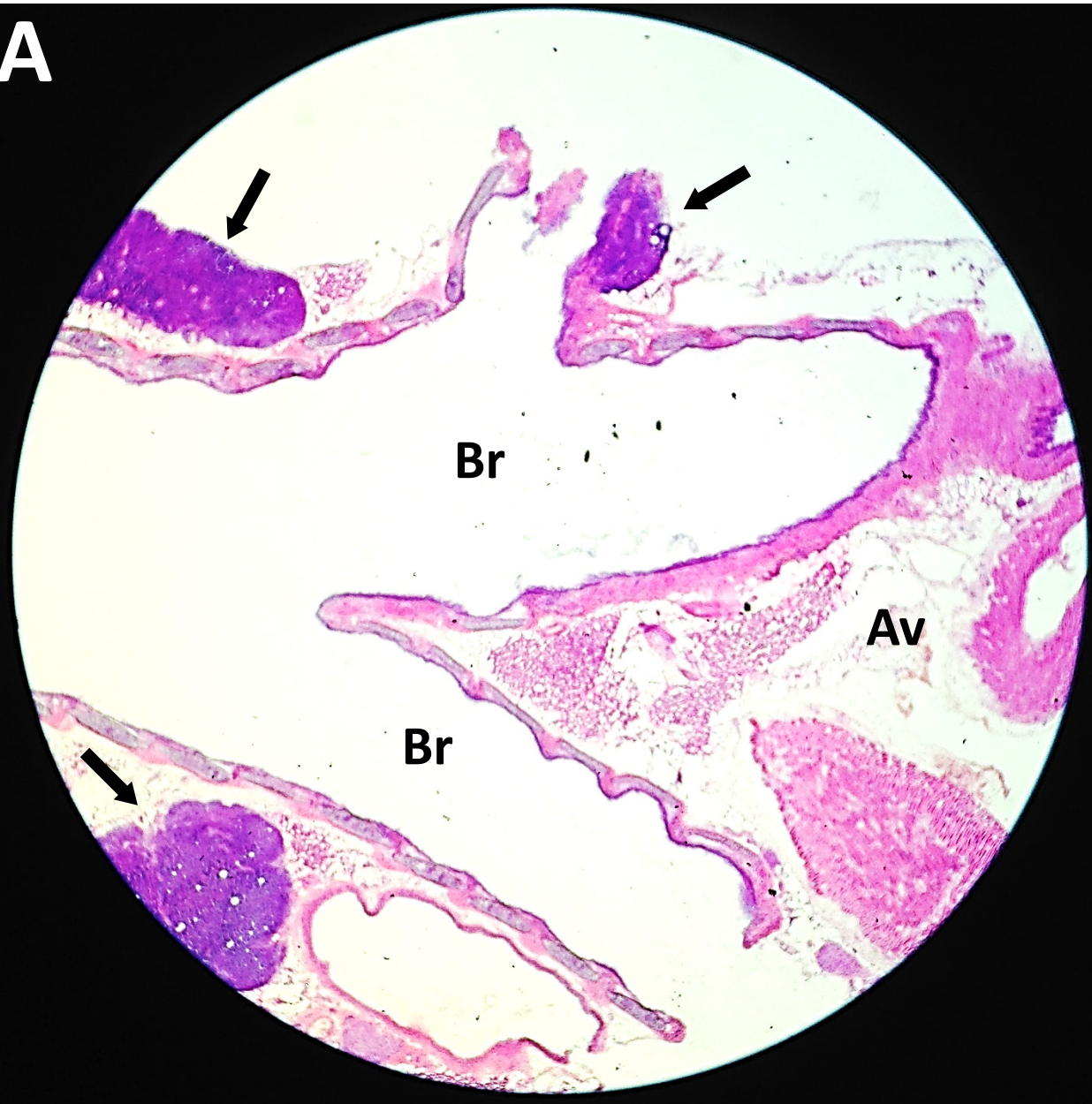
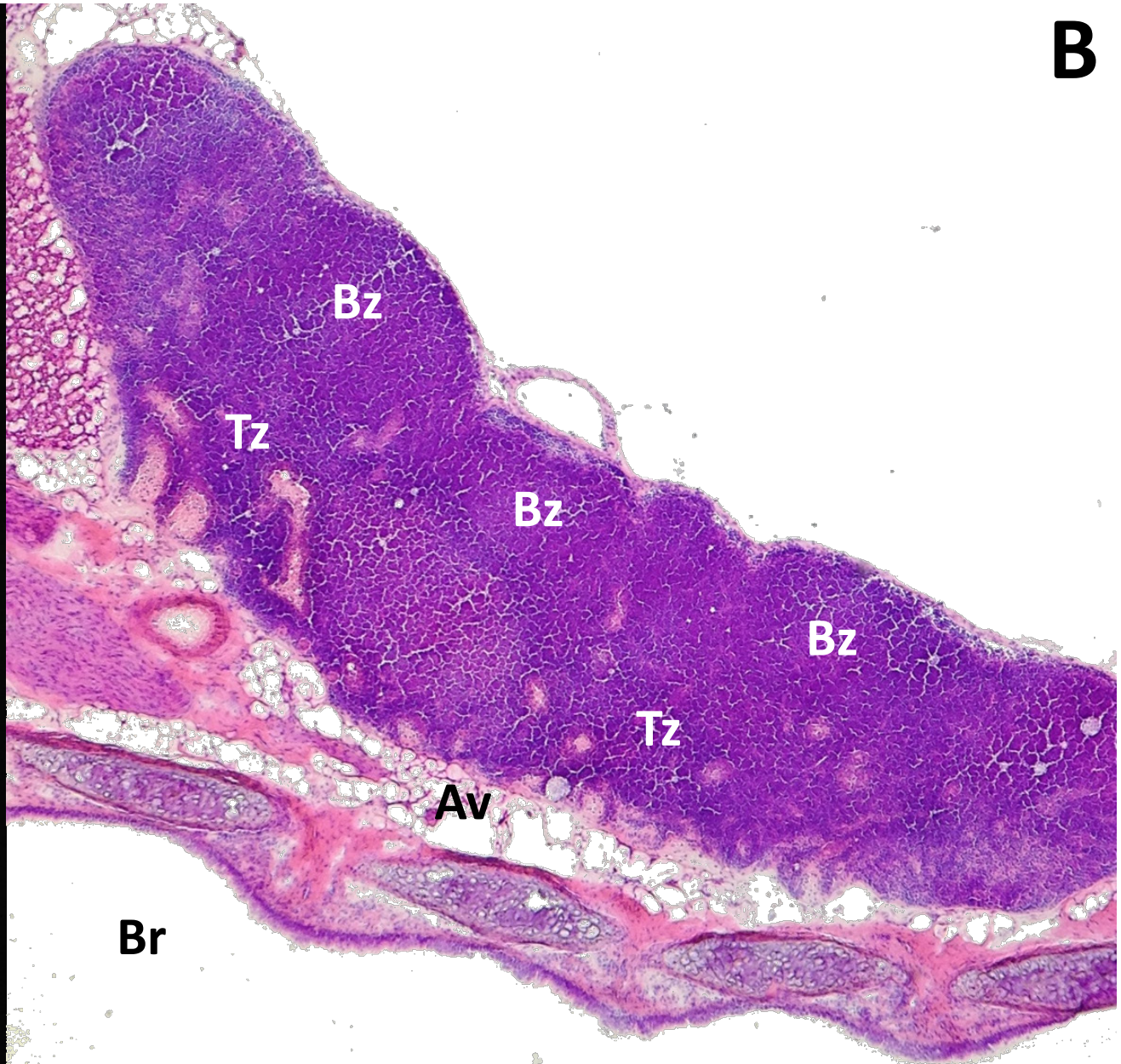


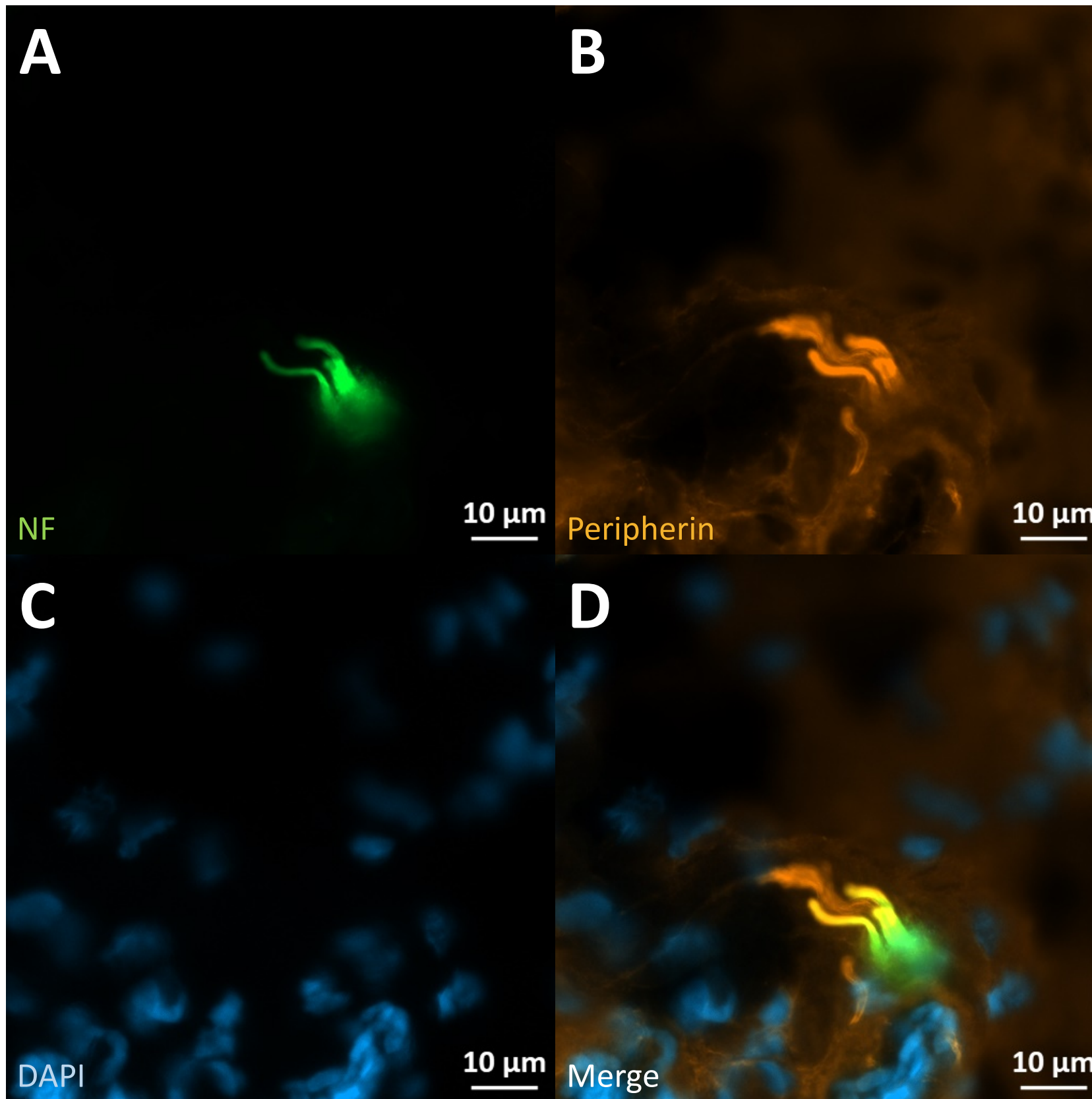
A



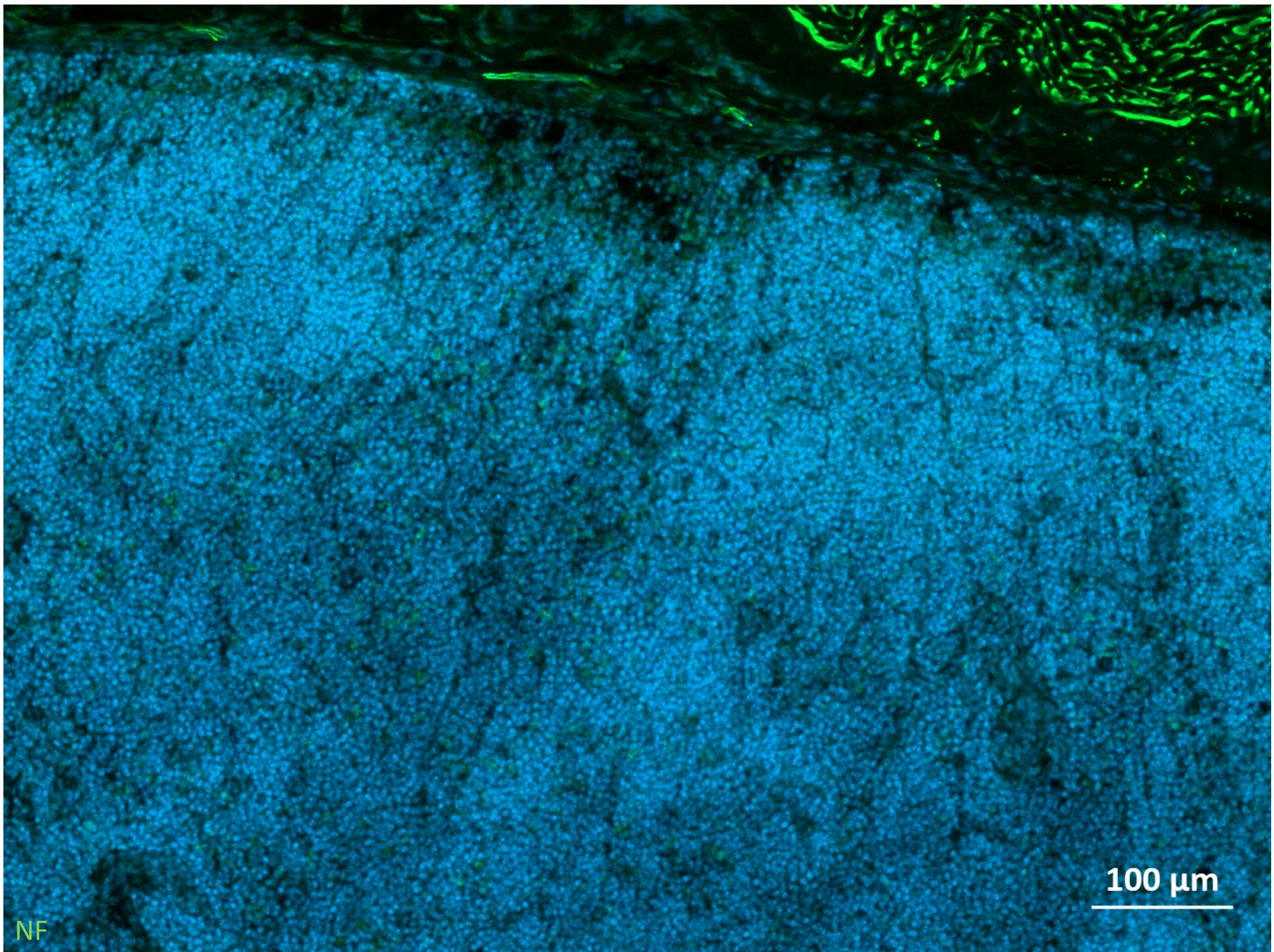
B



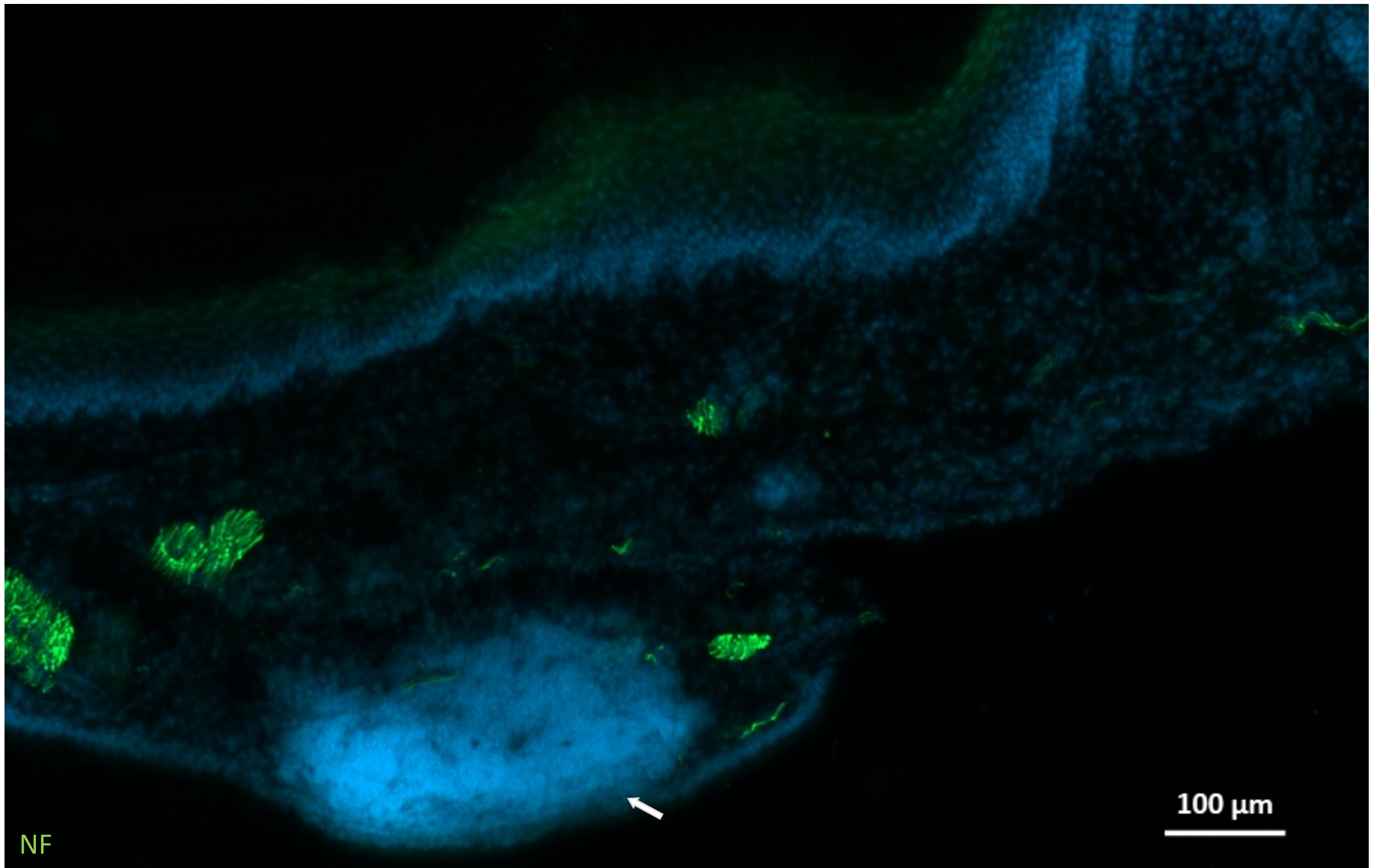
Supplementary figure a
(BALT)



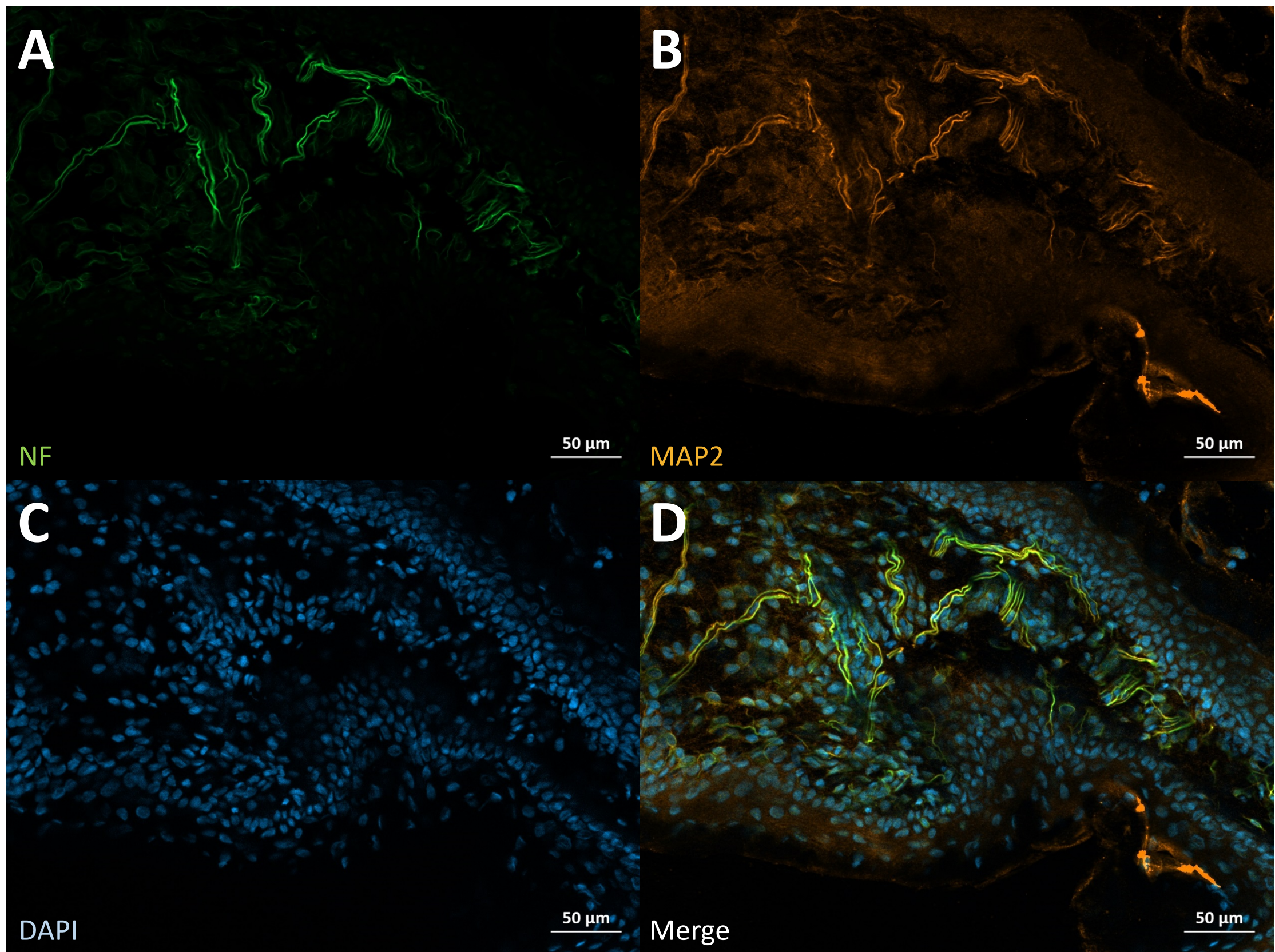
Supplementary figure c



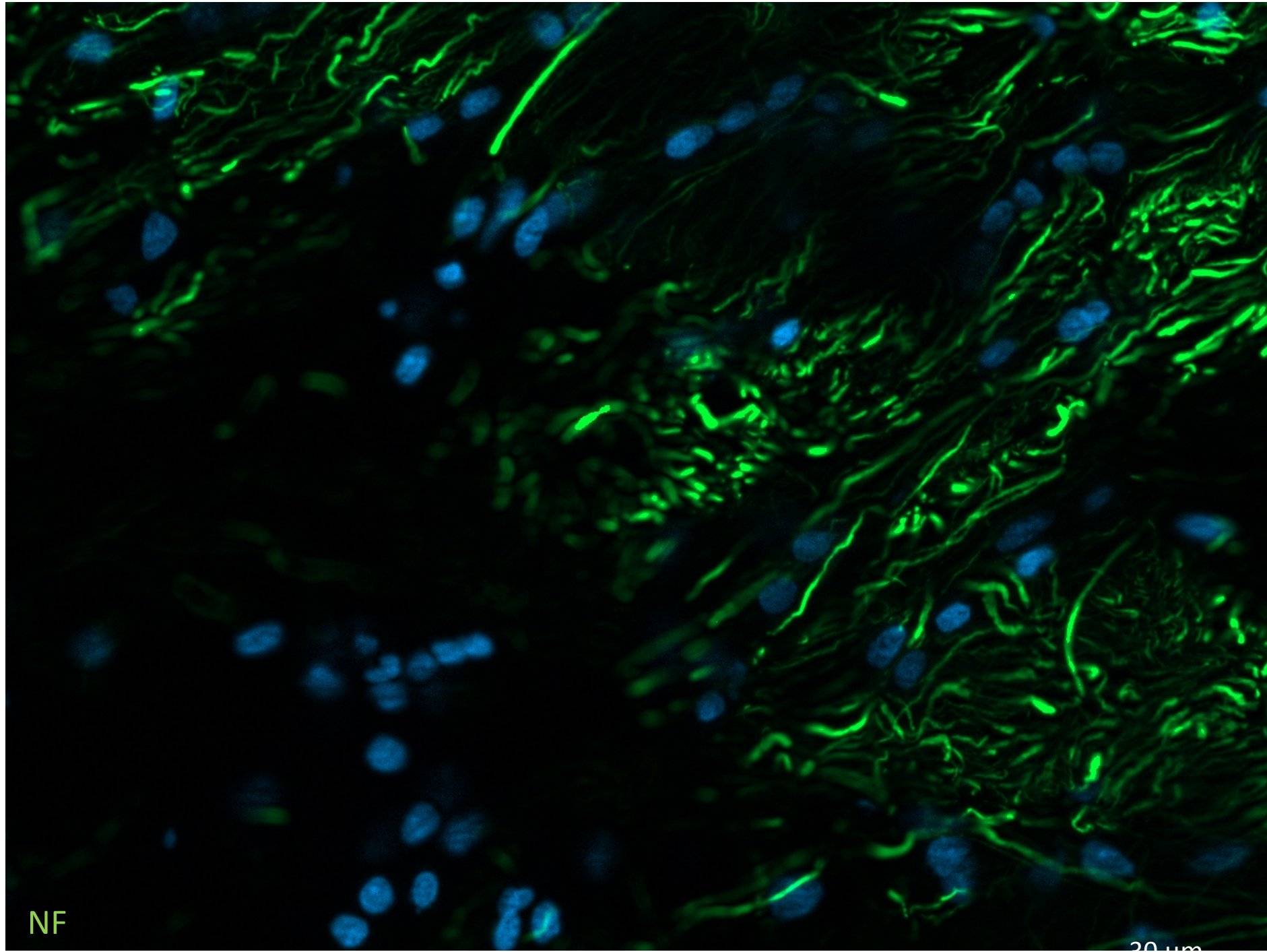
Supplementary figure d



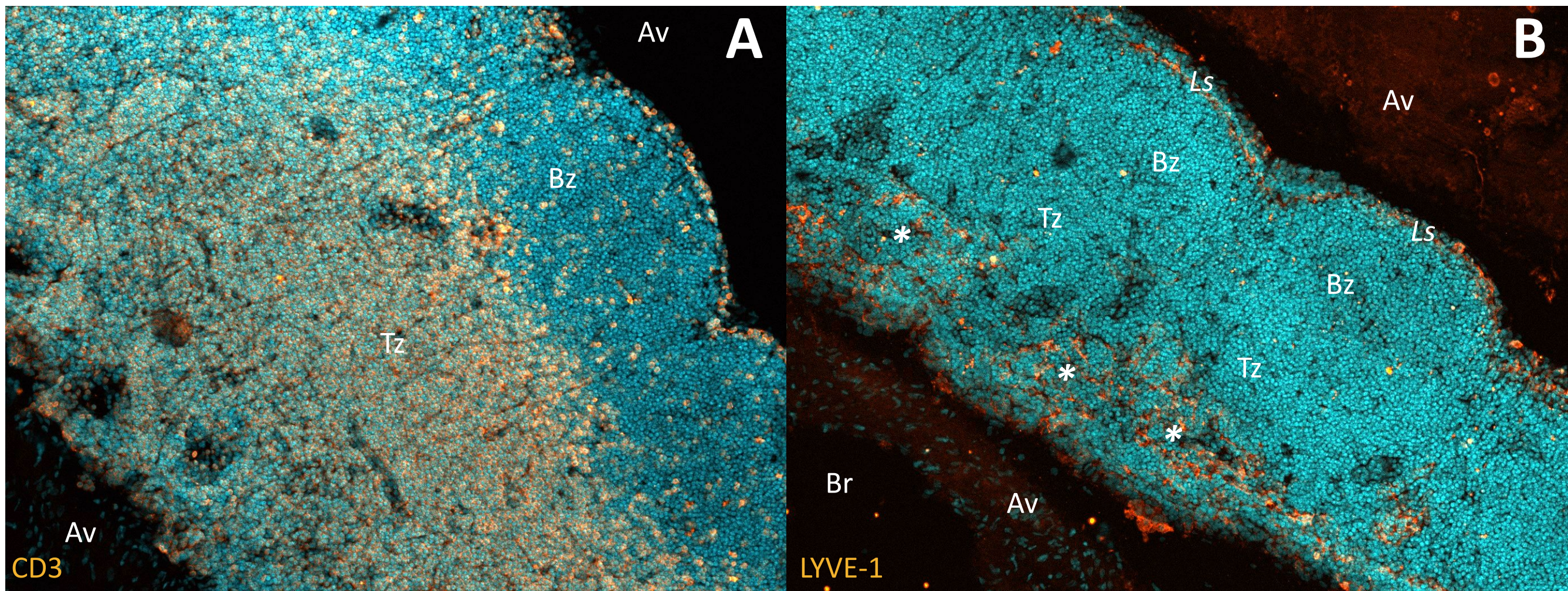
Supplementary figure e



Supplementary figure f



Supplementary figure g



Supplementary figure h

Supplementary - table 1: statistical information about species, number of organs, slices and type of section

Organ / tissue	samples total	slices each	slices total	species	serial section
thymus	4	150	600	rat	yes
spleen	4	100	400	rat	yes
dermis	4	30	120	rat	no
NALT	3	30	90	mouse	yes
BALT	3	30	90	rat	yes
Peyer's patches	4	30	120	rat	yes
brain	2	30	60	rat	no
brain	2	30	60	mouse	no
bone marrow (femur)	2	20	40	rat	no
superficial cervical lymph node	4	30	120	rat	yes
facial lymph node	4	30	120	rat	yes
brachial lymph node	4	30	120	rat	yes
axillary lymph node	4	30	120	rat	yes
superior mesenteric lymph node	4	30	120	rat	yes
inguinal lymph node	4	30	120	rat	yes
popliteal lymph node	4	30	120	rat	yes
renal lymph node	4	30	120	rat	yes