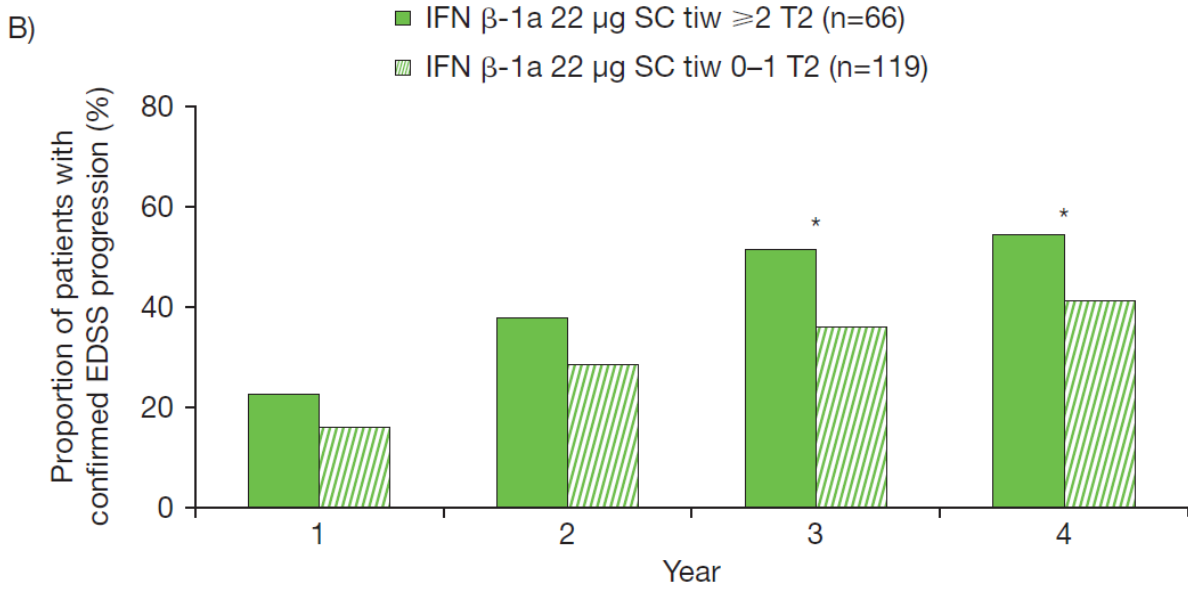
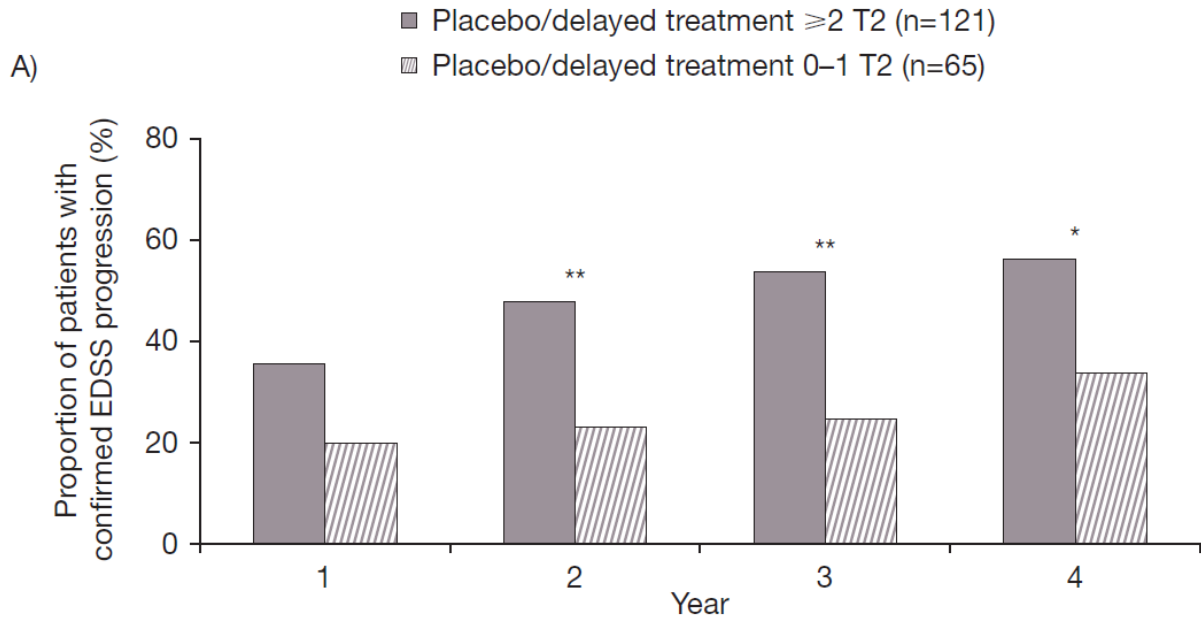
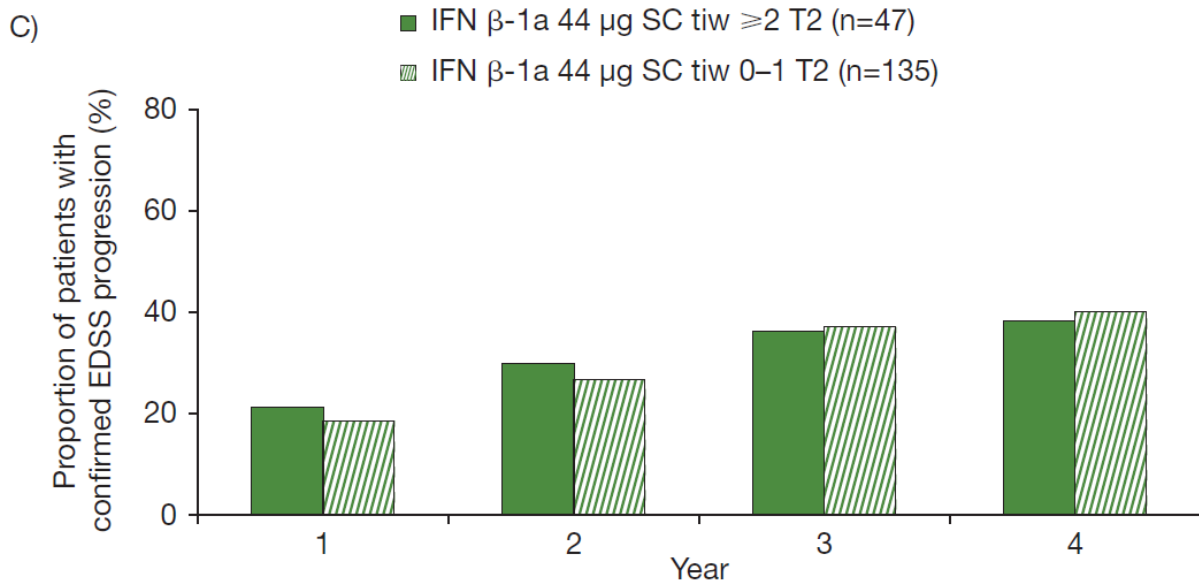


**Additional file 1**





**Supplementary Fig. 1** Proportion with EDSS progression at each year by  $\geq 2$  versus 0–1 active T2 lesions at 6 months.

(a) Placebo/delayed treatment group; (b) IFN  $\beta$ -1a 22  $\mu$ g SC tiw group; (c) IFN  $\beta$ -1a 44  $\mu$ g SC tiw group.

*p* values indicate differences between patients with differing lesion loads at 6 months within the treatment group. No statistically significant differences were seen in the IFN  $\beta$ -1a 44  $\mu$ g SC tiw group. Values were calculated with a logistic regression model with predictor ( $\geq 2$  vs. 0–1 T2 lesions) as a fixed effect; number of relapses within previous 2 years, age, baseline EDSS score, and baseline burden of disease were independent variables, and *p* values were calculated for the predictive effect of T2 lesion subgroups.

\**p*<0.05; \*\**p*<0.01.

EDSS: Expanded Disability Status Scale; IFN  $\beta$ -1a: interferon beta-1a; SC: subcutaneously; tiw: three times weekly.