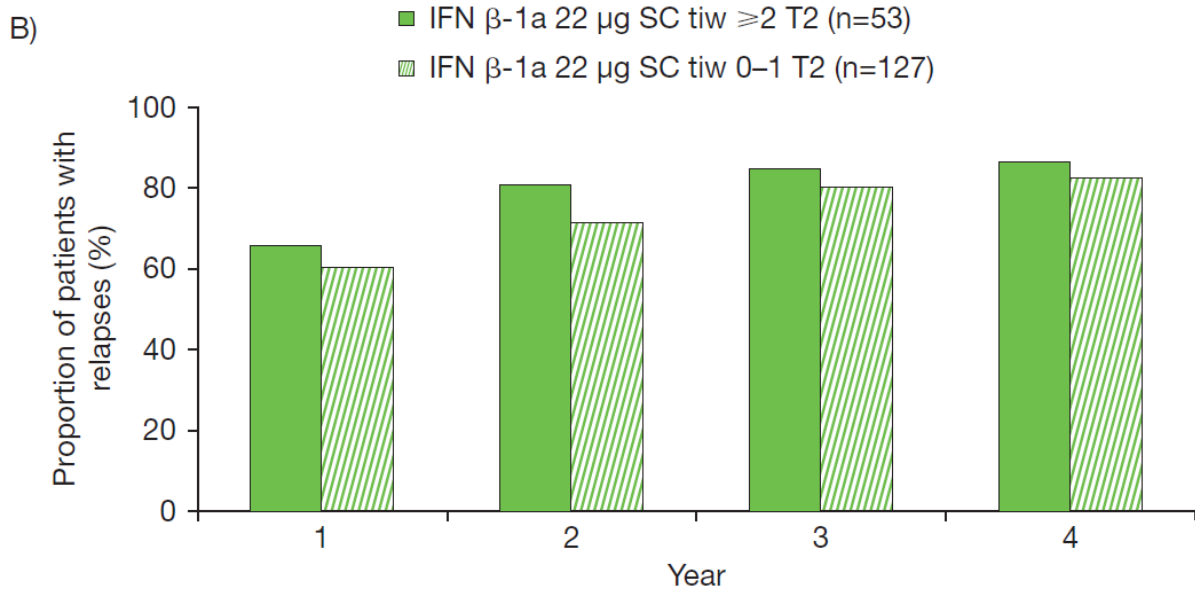
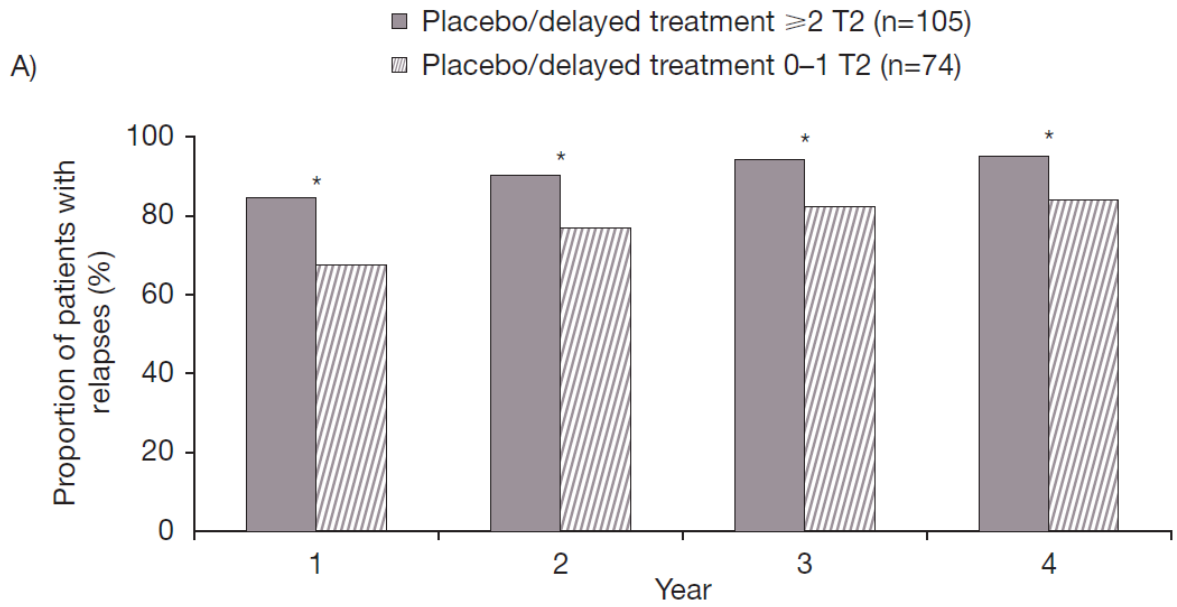
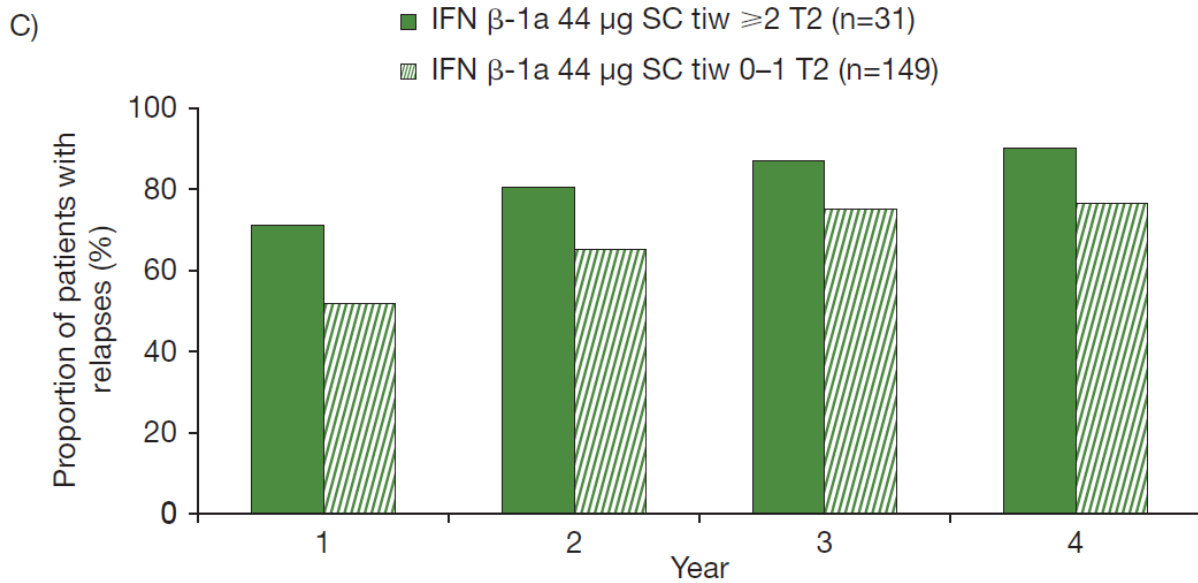


Additional file 7





Supplementary Fig. 6 Proportion relapsed at each year by ≥ 2 versus 0–1 active T2 lesions at 12 months.

(a) Placebo/delayed treatment group; (b) IFN β -1a 22 μ g SC tiw group; (c) IFN β -1a 44 μ g SC tiw group.

p-values indicate differences between patients with differing lesion loads at 12 months within the treatment group. No statistically significant differences were seen in the IFN β -1a SC tiw groups. Values were calculated with a logistic-regression model with predictor (≥ 2 vs 0–1 T2 lesions) as a fixed effect; number of relapses within previous 2 years, age, baseline EDSS score, and baseline burden of disease were independent variables, and *p*-values were calculated for the predictive effect of T2 lesion subgroups.

**p*<0.05.

EDSS: Expanded Disability Status Scale; IFN β -1a: interferon beta-1a; SC: subcutaneously; tiw: three times weekly.