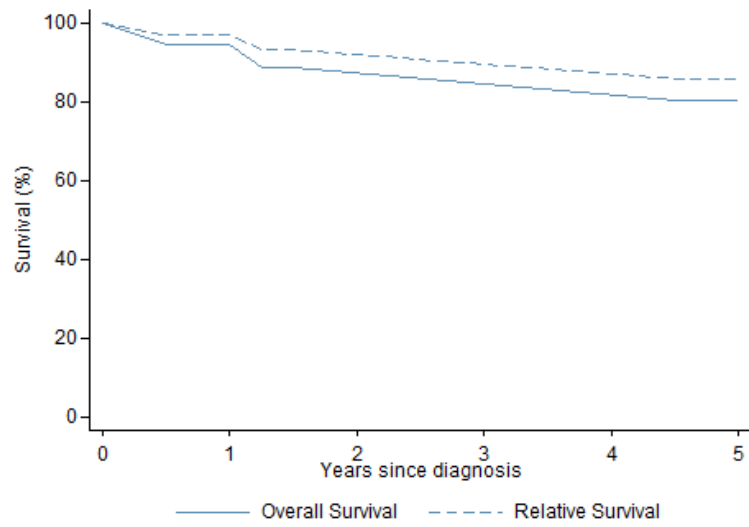
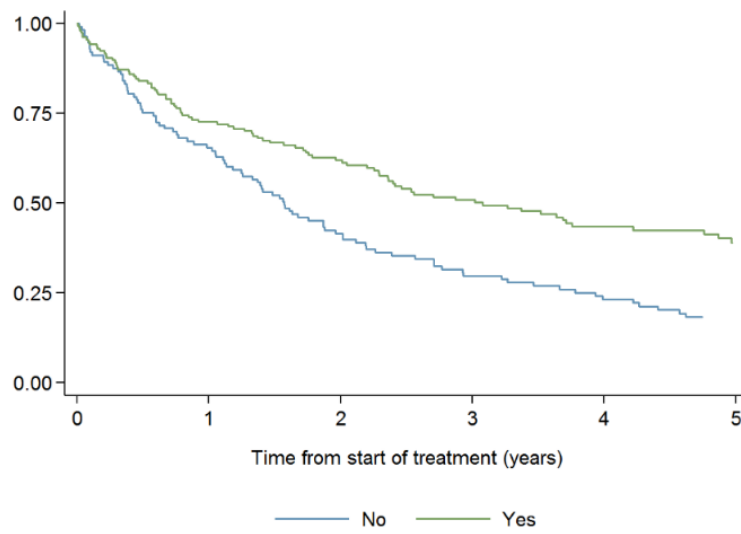


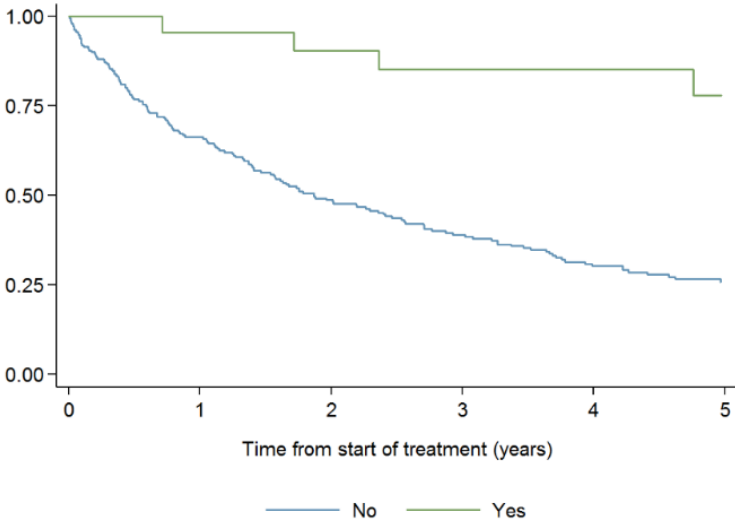
Supplementary Figure 1 Overall & Relative Survival for Watch & Wait with no disease progression (n=18)



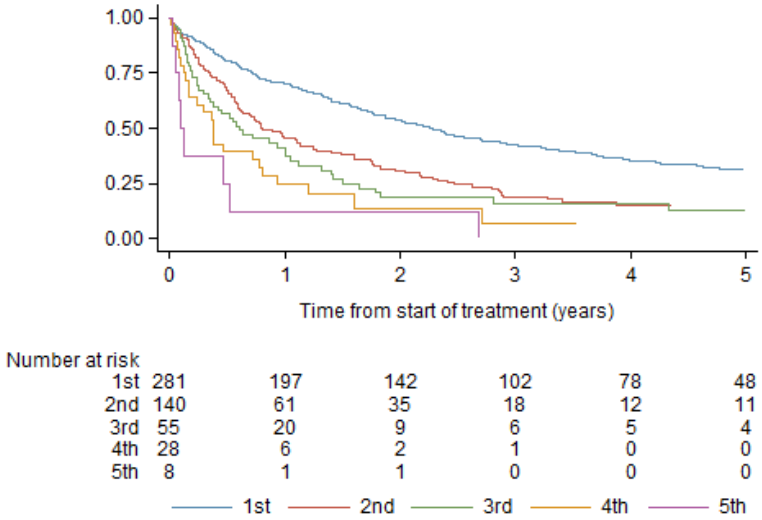
Supplementary Figure 2 Overall Survival by Ritxumab Immunochemotherapy



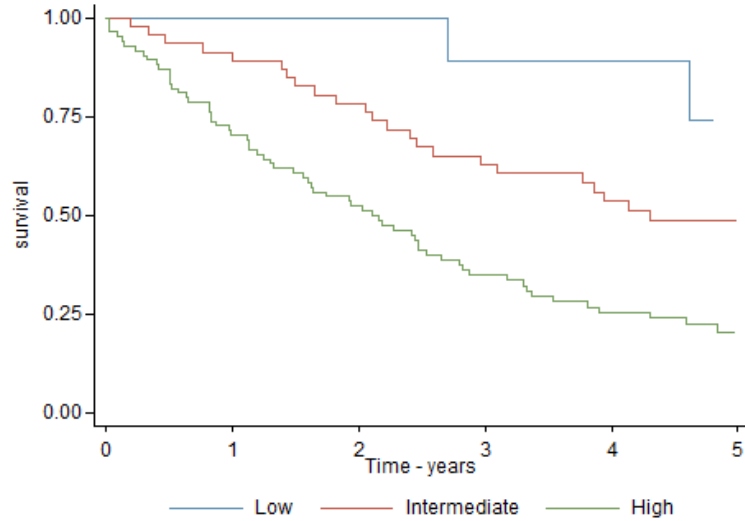
Supplementary Figure 3 Overall Survival by Consolidation Autologous Stem Cell Transplant



Supplementary Figure 4 Overall Survival by Line of Treatment



Supplementary Figure 5 Overall Survival by biological Mantle Cell International Prognostic Index



Supplementary Figure 6 Overall Survival by Mantle Cell International Prognostic Index White Blood Cell Count and First Line Management

