



STRUCTURAL BIOLOGY
COMMUNICATIONS

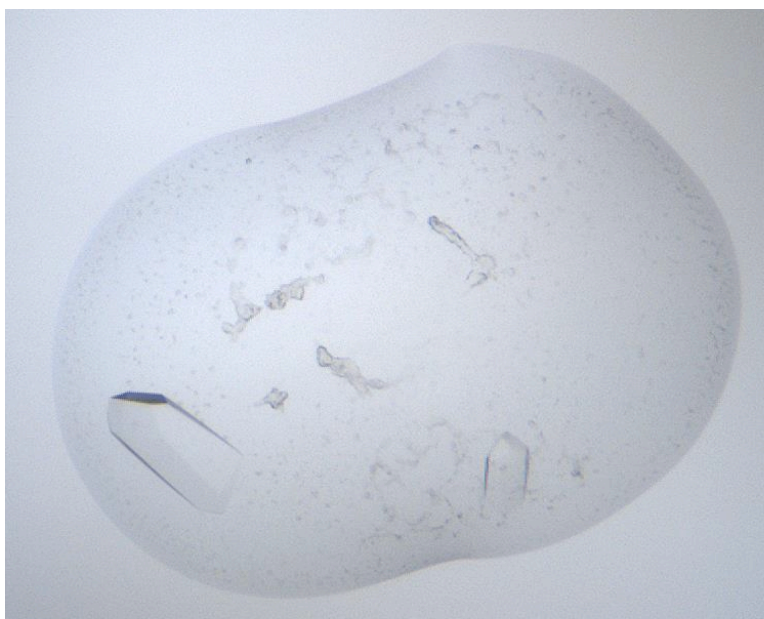
Volume 74 (2018)

Supporting information for article:

Structure and stability of the *Human respiratory syncytial virus* M₂₋₁ RNA-binding core domain reveals a compact and cooperative folding unit

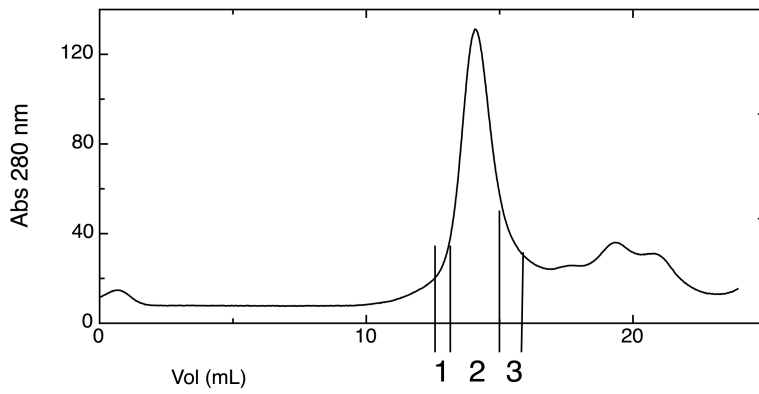
Ivana G. Molina, Inokentijs Josts, Yasser Almeida Hernandez, Sebastian Esperante, Mariano Salgueiro, Maria M. Garcia Alai, Gonzalo de Prat-Gay and Henning Tidow

Supplementary Figure S1

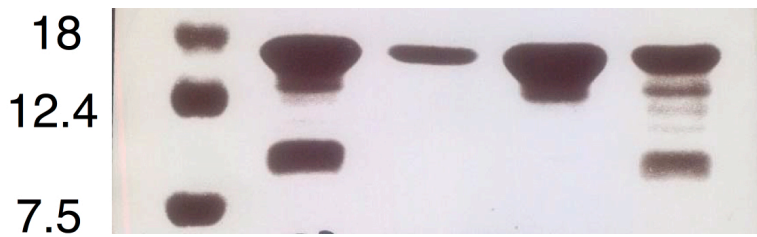


Representative crystals used for structure determination.

Supplementary Figure S2



Size-exclusion chromatography (S75) profile of M₂₋₁ RBD after proteolytic cleavage of full-length M₂₋₁. The molecular weight of the protein was 13.6 kDa.



SDS-PAGE analysis of selected fractions of the size-exclusion chromatography.