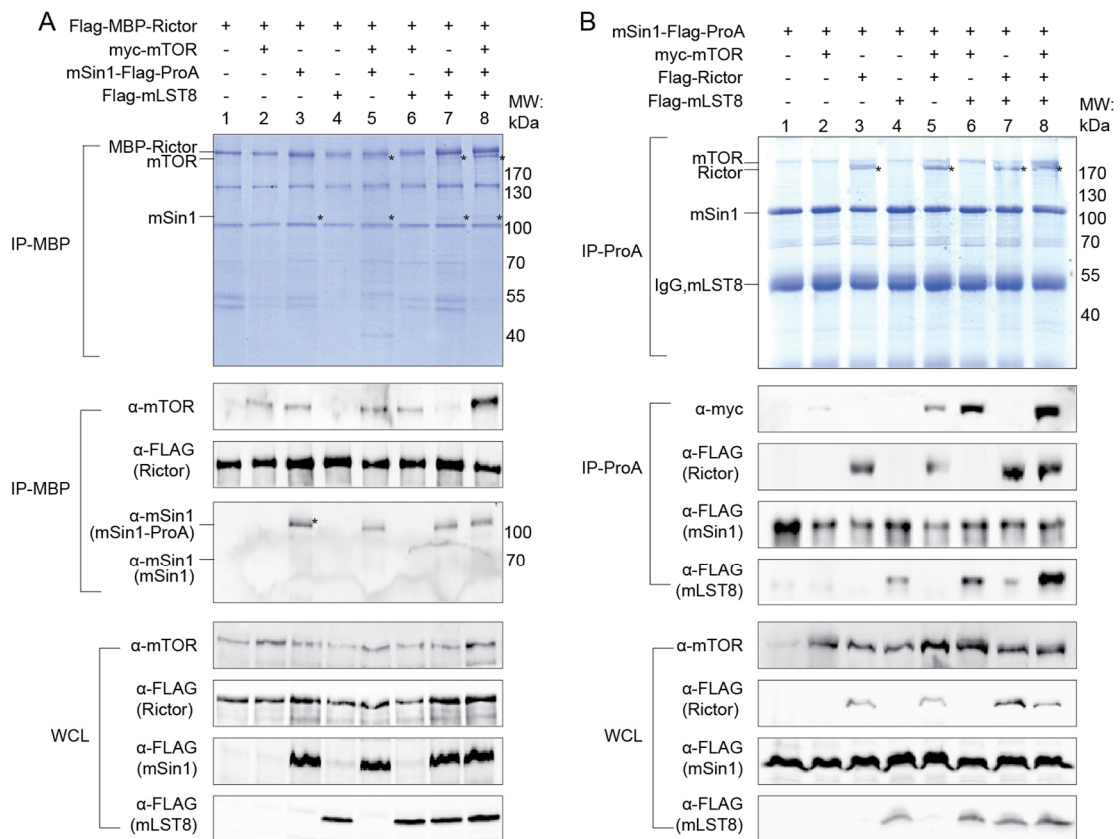


## Supplementary information, Figure S2



**Figure S2** Intermolecular interaction within mTORC2 complex. **(A, B)** Co-immunoprecipitations of Rictor **(A)** and mSin1 **(B)** with other mTORC2 components. The indicated plasmids were co-transfected into 293F cells. N-terminally MBP-tagged Rictor and C-terminally ProA-tagged mSin1 were immobilized using Amylose and IgG resins, respectively. The bound proteins were subjected to SDS-PAGE and visualized by Coomassie blue (upper panels) with the positions of target proteins indicated by black stars. The bound proteins and whole cell lysates (WCL) were subjected to SDS-PAGE and visualized by western blotting using antibodies as indicated (lower panels).