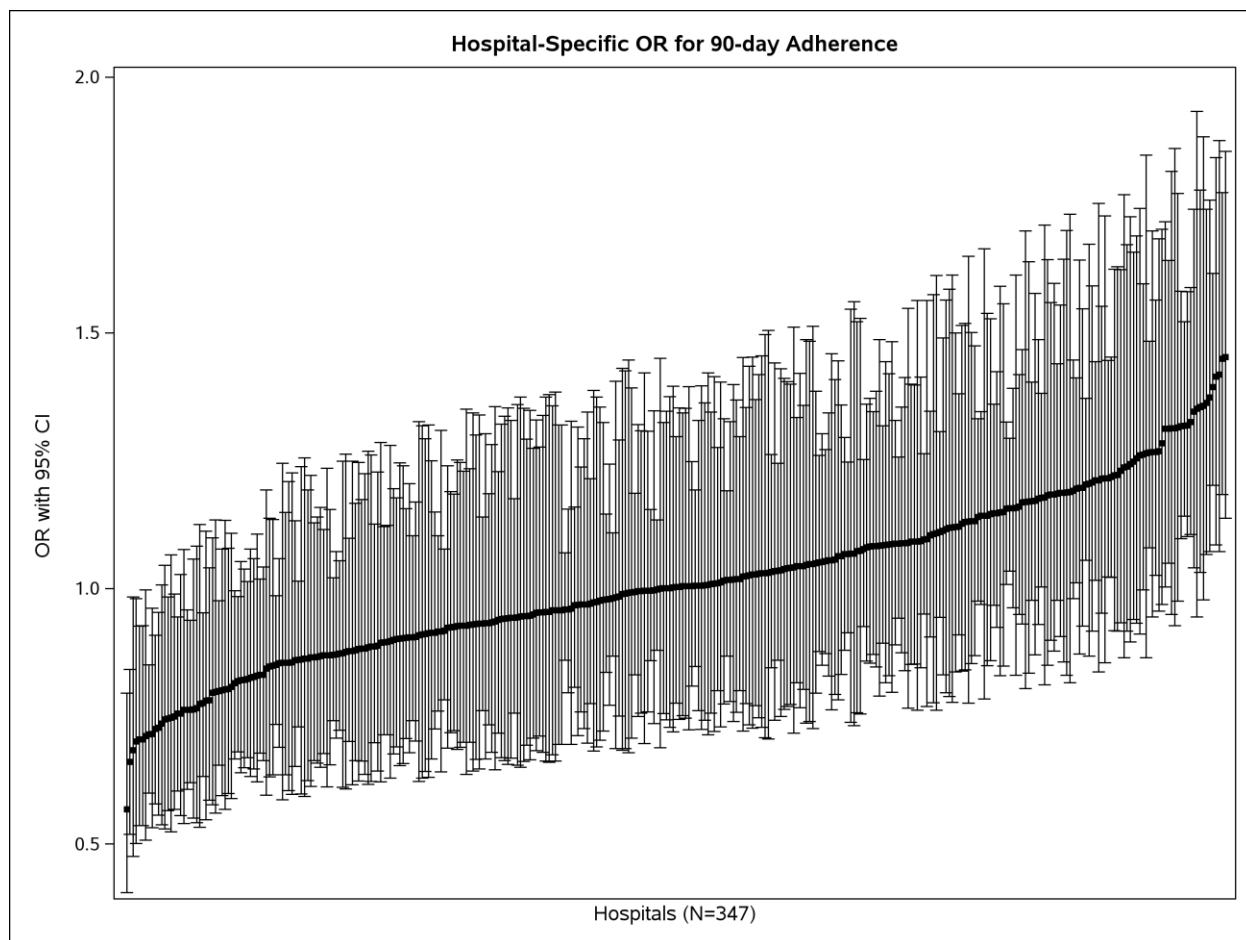


**SUPPLEMENTAL MATERIAL**

### Supplemental Figure 1. Hospital-specific OR for 90-day Adherence

We used percentiles of ORs to classify hospitals into high (>75<sup>th</sup> percentile), moderate (25<sup>th</sup>–75<sup>th</sup> percentile), and low (<25<sup>th</sup> percentile) adherence.

CI indicates confidence interval; OR, odds ratio



## Supplemental Figure 2. Hospital-specific Adherence Rates

Association between hospital-specific adherence rates at 90 days for all pairs of medications.

ACE/ARB indicates angiotensin-converting enzyme/angiotensin receptor blocker

