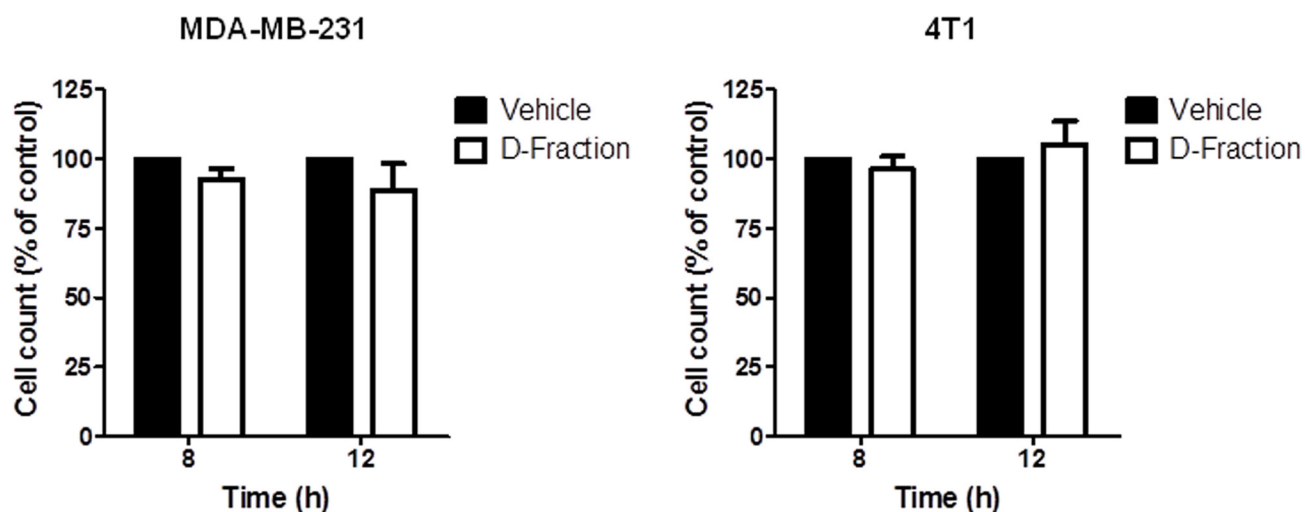


Antitumoral and antimetastatic activity of Maitake D-Fraction in triple-negative breast cancer cells

SUPPLEMENTARY MATERIALS



Supplementary Figure 1: Maitake D-Fraction does not affect the viability of TNBC cells at treatment times that decrease their migration. Cell count was assessed in MDA-MB-231 and 4T1 cells after 8 or 12 h of treatment with D-Fraction (IC₅₀) or vehicle. Data show the percentage of cells in relation to vehicle-treated cells. The bars represent the mean \pm SEM of two independent experiments.