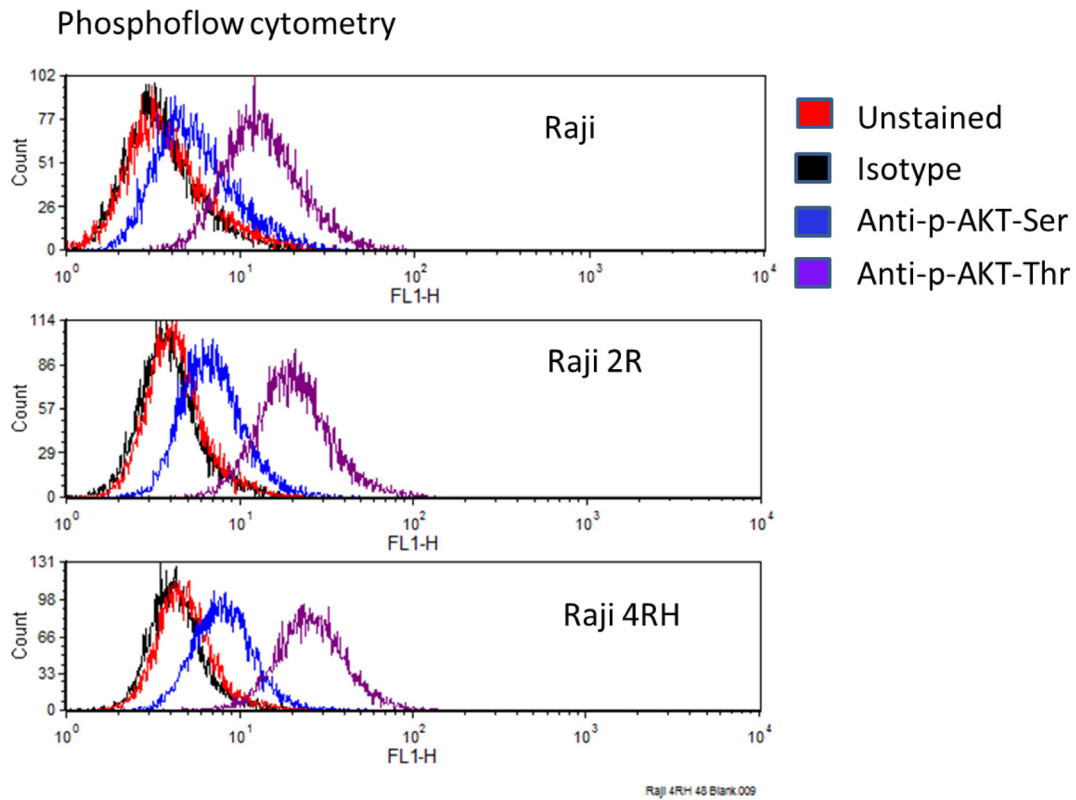
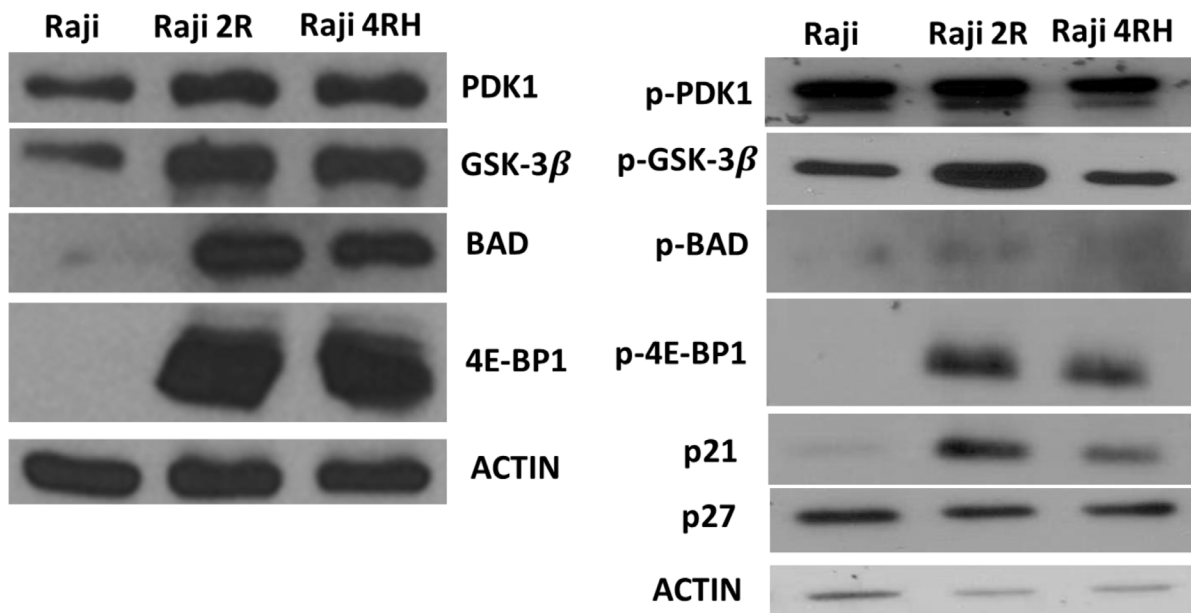


Pre-clinical activity of targeting the PI3K/Akt/mTOR pathway in Burkitt lymphoma

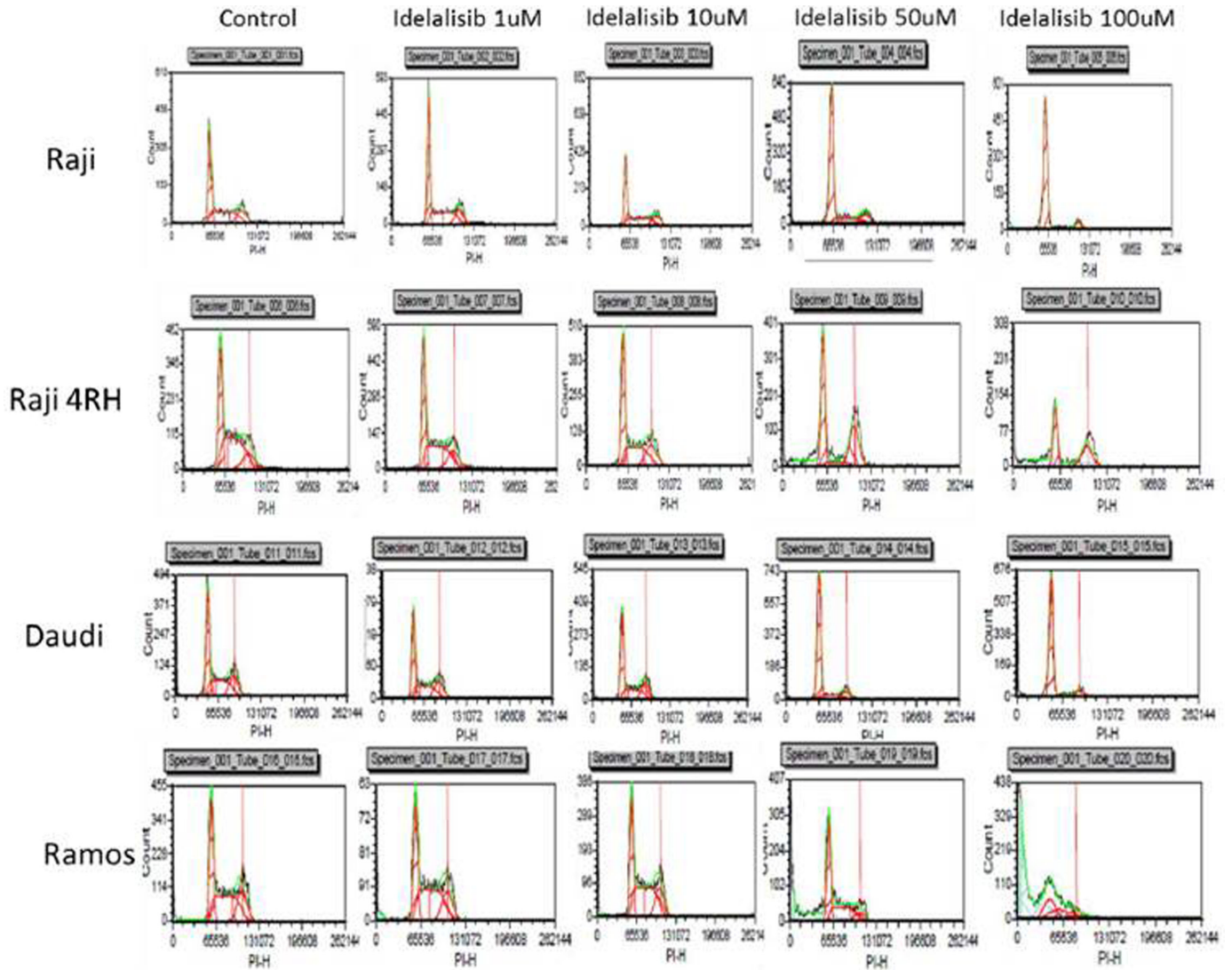
SUPPLEMENTARY MATERIALS



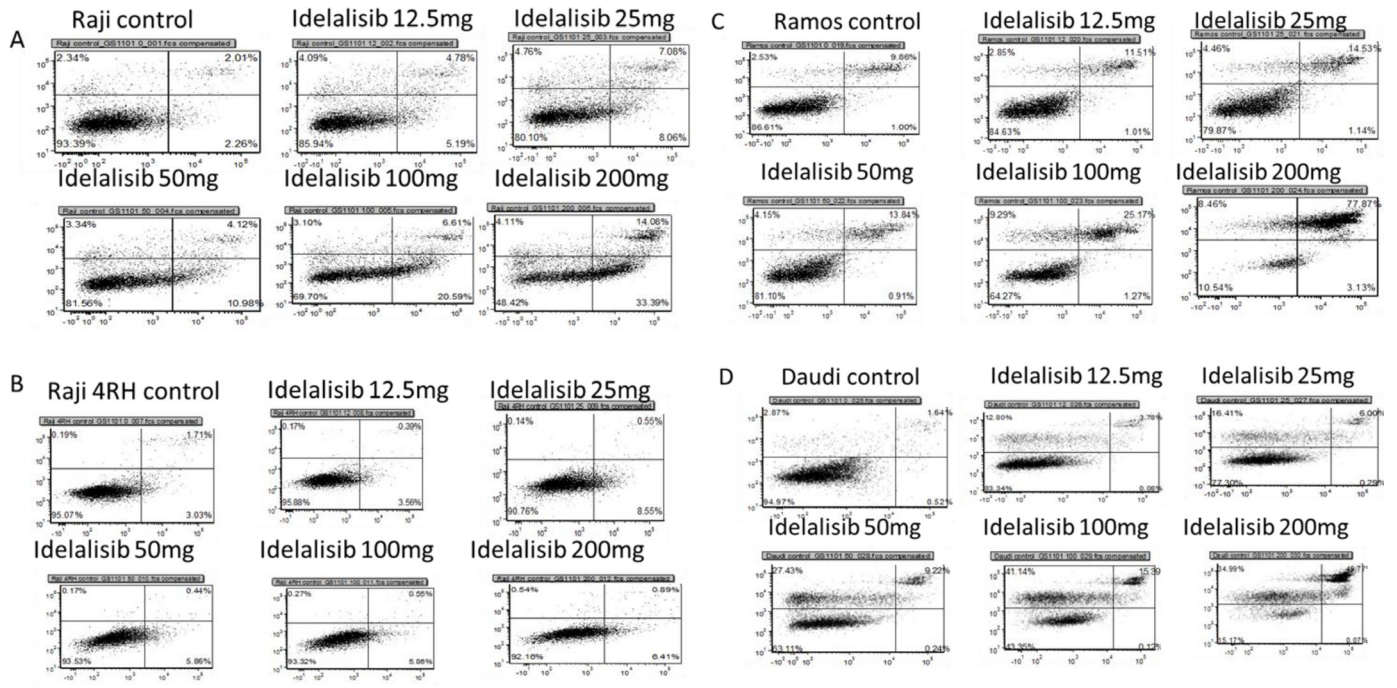
Supplementary Figure 1: Phosphoflow cytometry for p-AKT in Raji, Raji 2R and Raji 4RH cell lines.



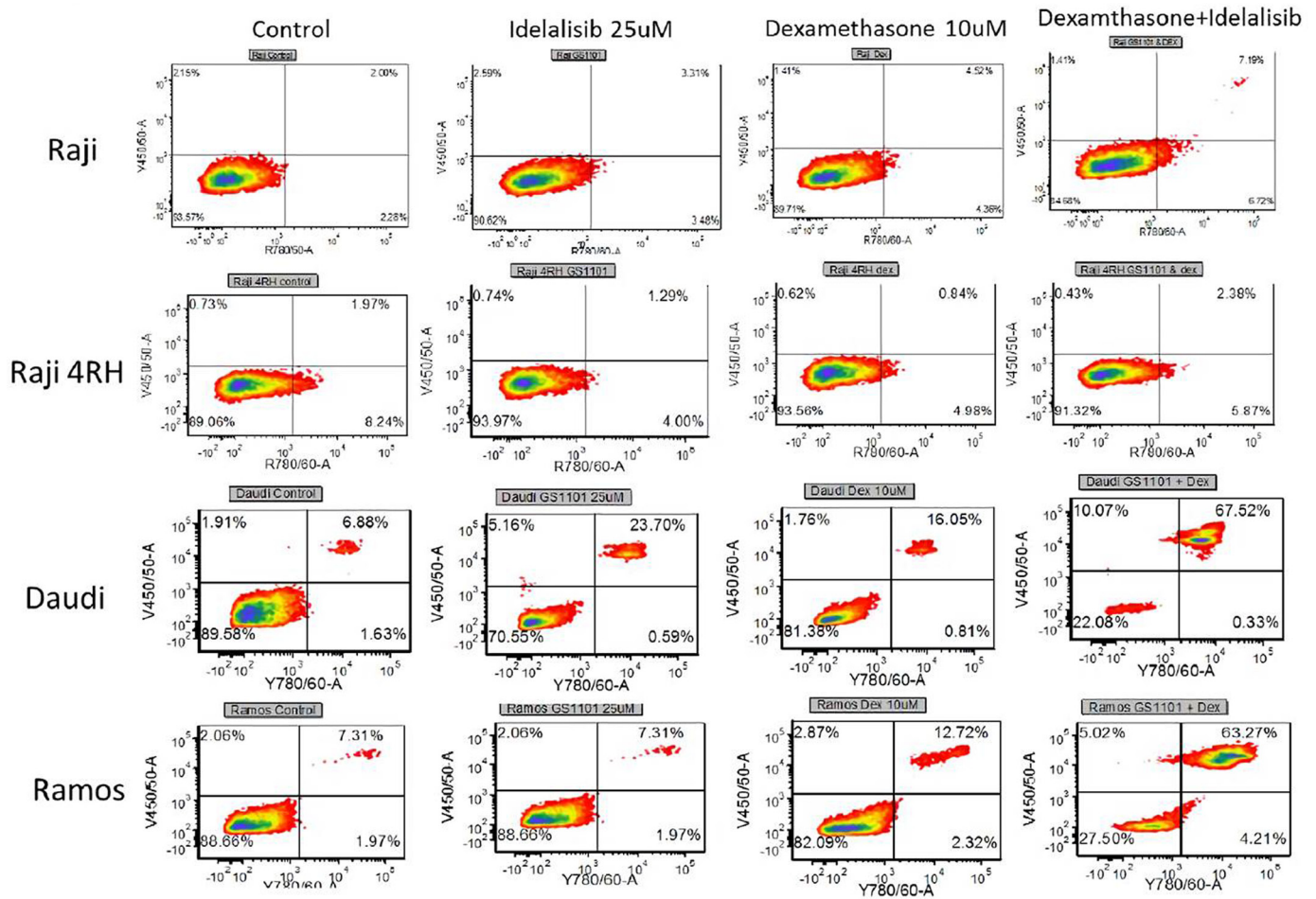
Supplementary Figure 2: Western blots for total and phosphorylated proteins in Raji, Raji 2R and Raji 4RH cells.



Supplementary Figure 3: FACS plots for cell cycle distribution following exposure to idelalisib in Raji, Raji 4RH, Daudi and Ramos.



Supplementary Figure 4: FACS plots for apoptosis analysis following exposure to idelalisib in (A) Raji, (B) Raji 4RH, (C) Ramos and (D) Daudi.



Supplementary Figure 5: FACS plots for apoptosis analysis following exposure to idelalisib, dexamethasone or the combination of idelalisib and dexamethasone in Raji, Raji 4RH, Daudi and Ramos.