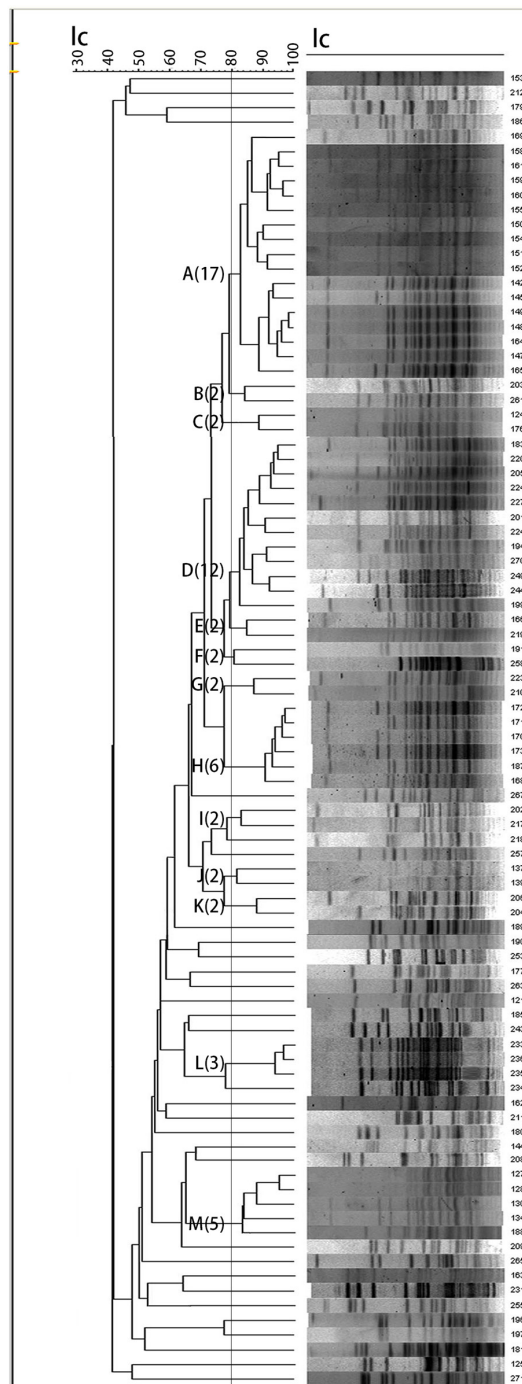


## Distribution of virulence-associated genes and antimicrobial susceptibility in clinical *Acinetobacter baumannii* isolates

### SUPPLEMENTARY MATERIALS



**Supplementary Figure 1: A dendrogram of PFGE.** All the 88 *A. baumannii* isolates were classified into epidemic (cluster A to M) and Sporadic. PFGE, pulsed field gel electrophoresis; A to M, cluster A to M.

**Supplementary Table 1: The clinical characteristics of 88 strains of *Acinetobacter baumannii***

See Supplementary File 1