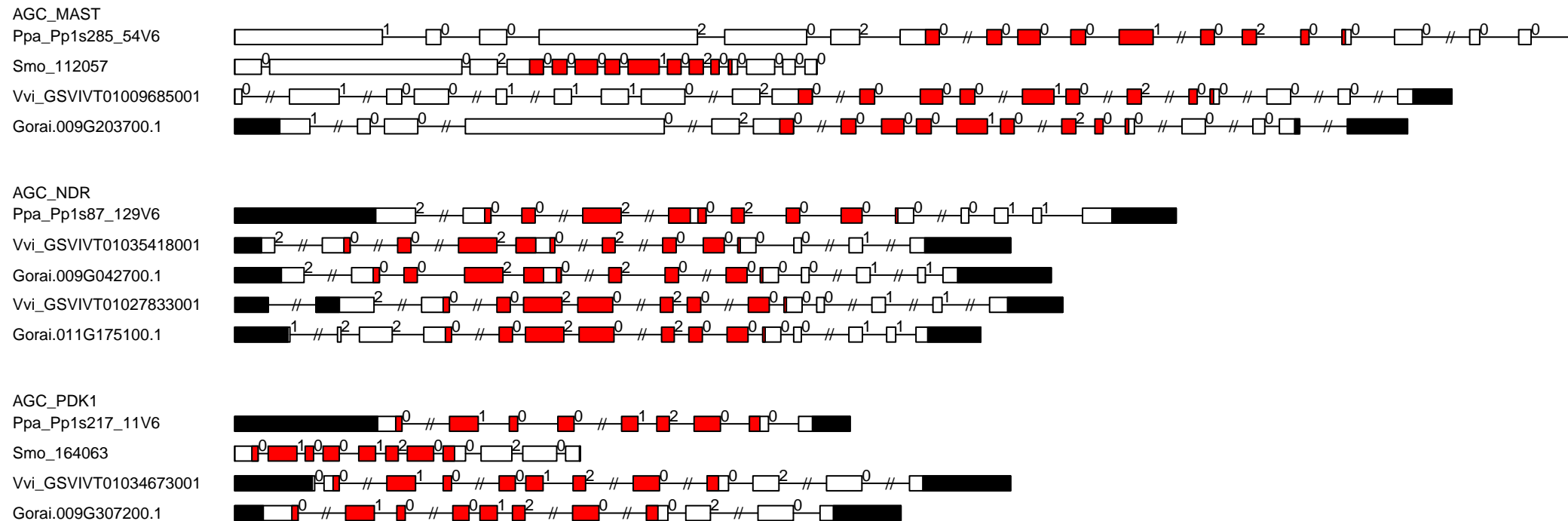


AGC conserved exon-intron and domain diagram (part 1)



AGC conserved exon-intron and domain diagram (part 2)

AGC_PKA-PKG

Ppa_Pp1s88_186V6

Smo_440463

Vvi_GSVIVT01015338001

Gorai.010G074600.1

AGC_RSK-2

Smo_230655

Vvi_GSVIVT01025082001

Gorai.008G012600.1

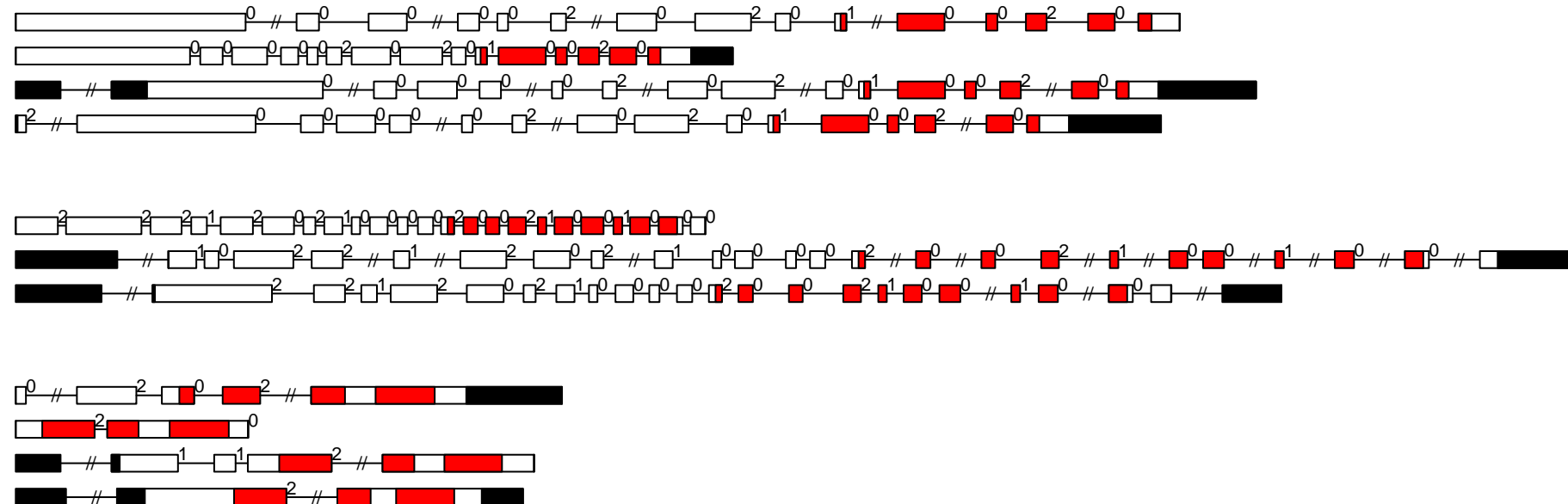
AGC_RSK-2

Ppa_Pp1s131_94V6

Smo_89681

Vvi_GSVIVT01018278001

Gorai.009G451500.2



-2000

0

2000

4000

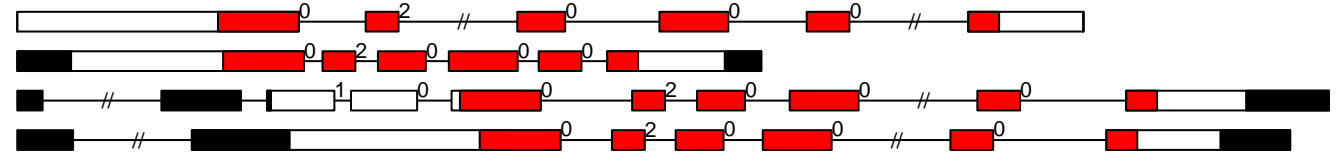
6000

8000

10000

AGC conserved exon-intron and domain diagram (part 3)

AGC-PI
Ppa_Pp1s118_230V6
Smo_181752
Vvi_GSVIVT01030167001
Gorai.011G124700.1



CAMK conserved exon-intron and domain diagram (part 1)

CAMK_AMPK

Ppa_Pp1s3_550V6

Smo_80443

Vvi_GSVIVT01011467001

Gorai.007G080200.1

CAMK_CAMK1-DCAMKL

Ppa_Pp1s433_36V6

Smo_82473

Vvi_GSVIVT01027353001

Gorai.N006600.1

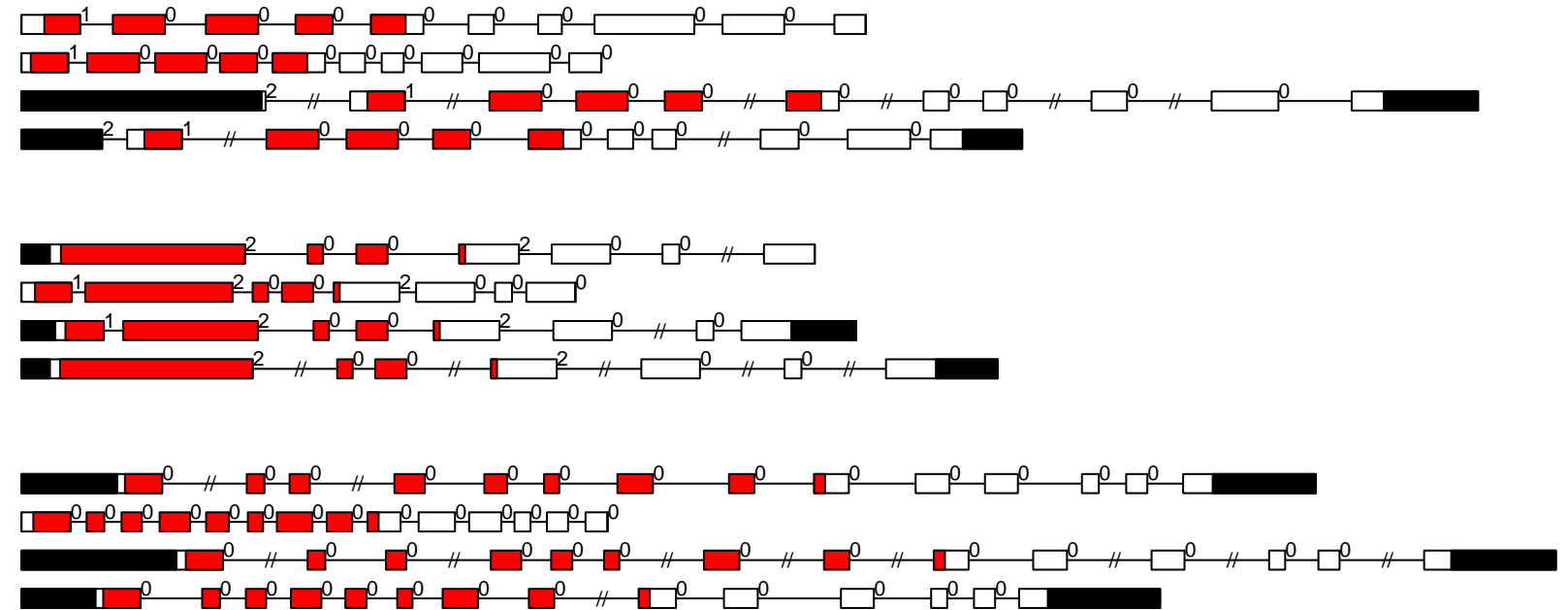
CAMK_CAMKL-CHK1

Ppa_Pp1s205_16V6

Smo_90416

Vvi_GSVIVT01015549001

Gorai.010G032200.1



-2000

0

2000

4000

6000

CAMK conserved exon-intron and domain diagram (part 2)

CAMK_CAMKL-LKB

Ppa_Pp1s59_209V6

Smo_119400

Vvi_GSVIVT01025378001

Gorai.001G132000.1

CAMK_CDPK

Ppa_Pp1s370_37V6

Smo_164119

Vvi_GSVIVT01018778001

Gorai.003G009500.1

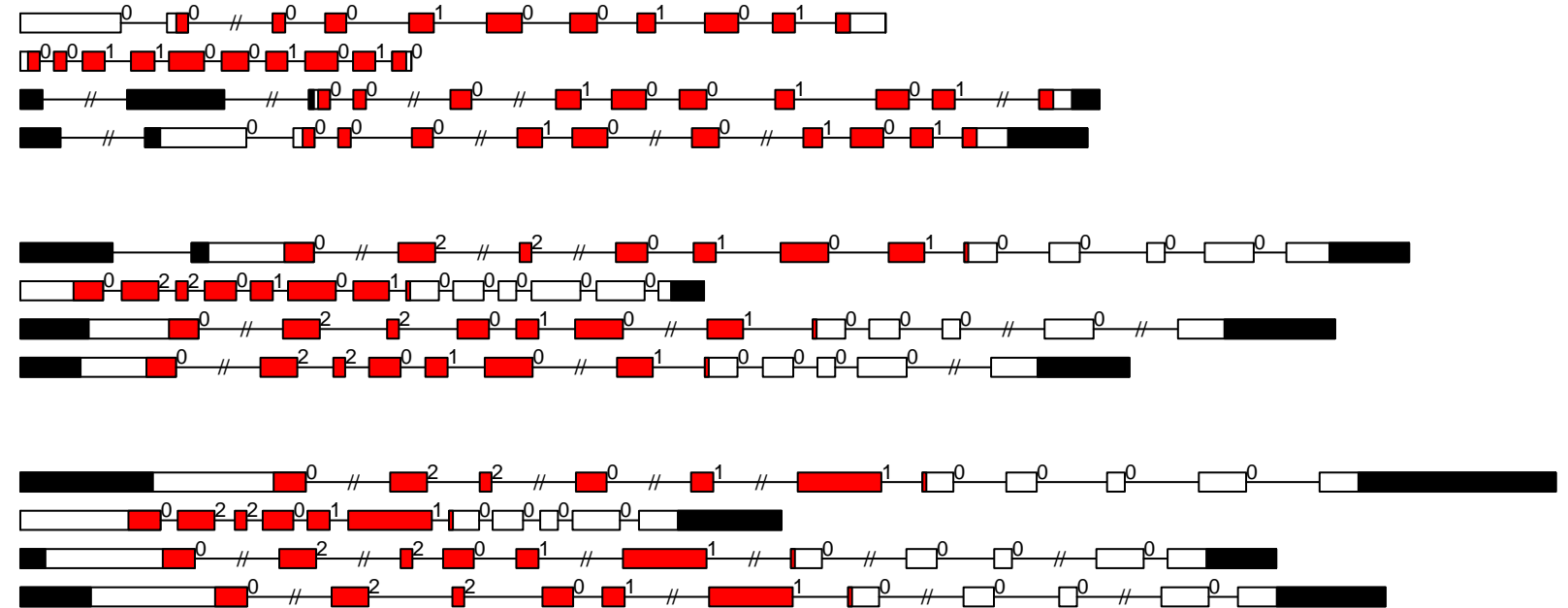
CAMK_CDPK

Ppa_Pp1s107_9V6

Smo_173444

Vvi_GSVIVT01027409001

Gorai.007G111600.1



-2000

0

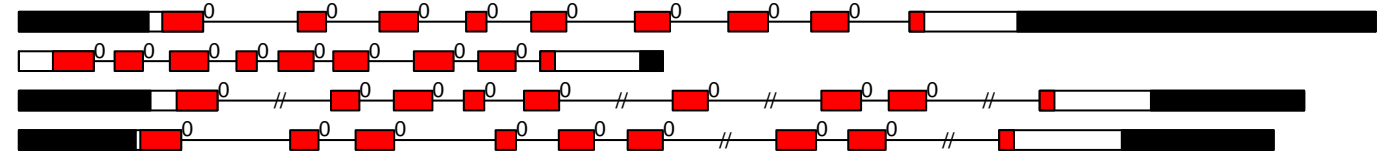
2000

4000

6000

CAMK conserved exon-intron and domain diagram (part 3)

CAMK_OST1L
Ppa_Pp1s218_59V6
Smo_171183
Vvi_GSVIVT01031806001
Gorai.013G038800.1



CK1 conserved exon-intron and domain diagram (all)

CK1_CK1

Ppa_Pp1s182_90V6

Smo_81432

Vvi_GSVIVT01028363001

Gorai.013G227100.1

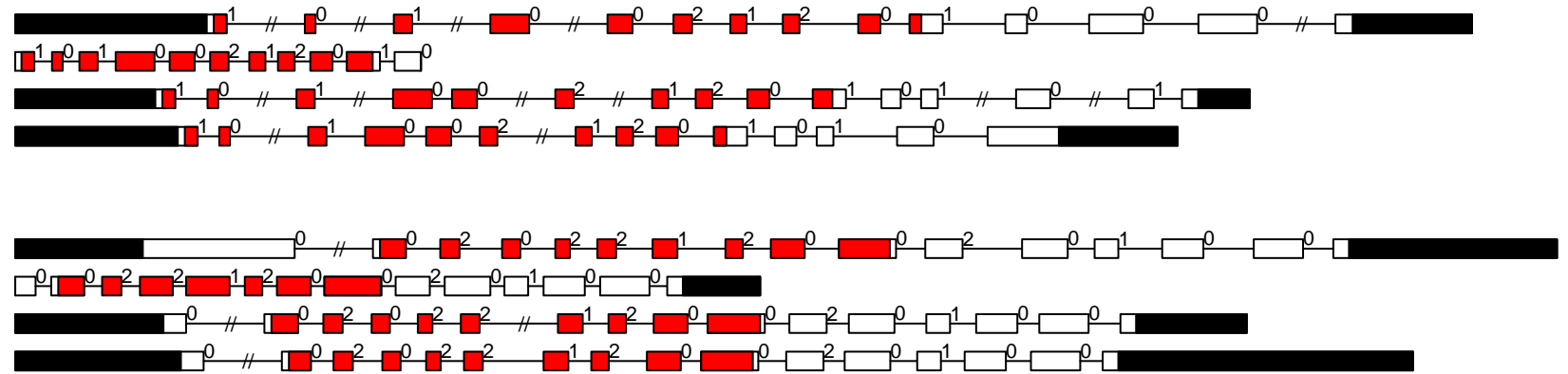
CK1_CK1-PI

Ppa_Pp1s66_174V6

Smo_139482

Vvi_GSVIVT01035288001

Gorai.013G219500.2



-2000

0

2000

4000

6000

CMGC conserved exon-intron and domain diagram (part 1)

CMGC_CDK-CDK7

Ppa_Pp1s150_11V6

Smo_100958

Vvi_GSVIVT01030954001

Gorai.006G193300.1

CMGC_CDK-CRK7-CDK9

Ppa_Pp1s89_168V6

Smo_141733

Vvi_GSVIVT01023220001

Gorai.012G128100.1

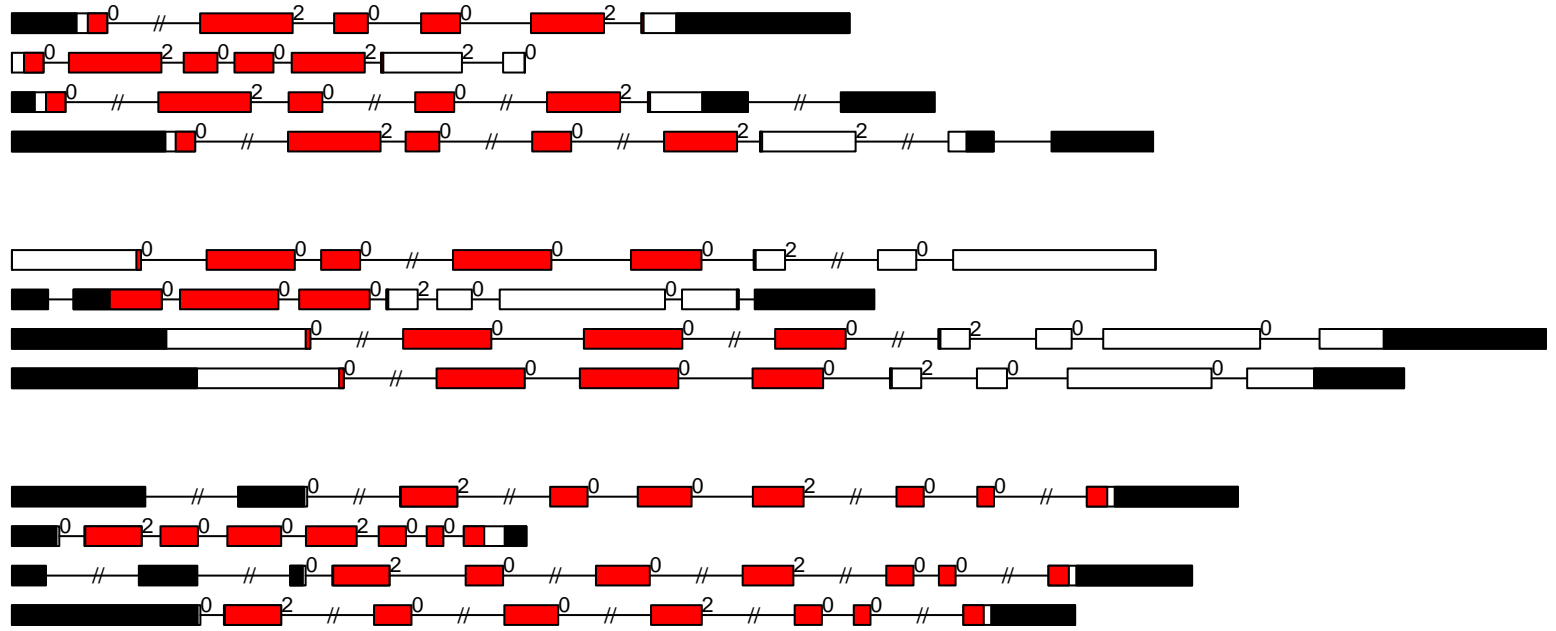
CMGC_CDK-PI

Ppa_Pp1s281_23V6

Smo_139306

Vvi_GSVIVT01026700001

Gorai.010G124800.5



CMGC conserved exon-intron and domain diagram (part 2)

CMGC_CDK-PI
Ppa_Pp1s127_92V6

Smo_110637

Vvi_GSVIVT01013440001

Gorai.002G112300.1

CMGC_CK2

Ppa_Pp1s63_208V6

Smo_146942

Vvi_GSVIVT01009366001

Gorai.011G107500.1

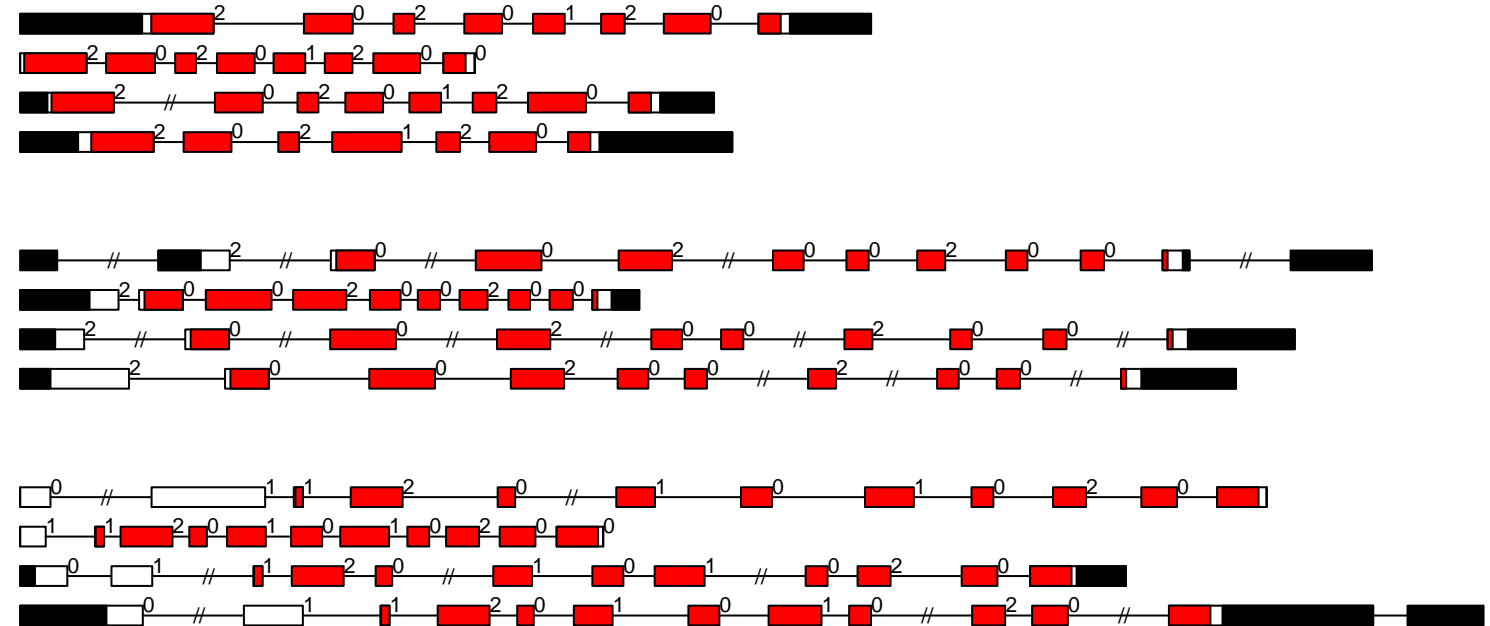
CMGC_CLK

Ppa_Pp1s132_58V6

Smo_85838

Vvi_GSVIVT01035714001

Gorai.009G423700.1



-2000

0

2000

4000

CMGC conserved exon-intron and domain diagram (part 3)

CMGC_DYRK-PRP4

Ppa_Pp1s250_28V6

Smo_75107

Vvi_GSVIVT01011916001

Gorai.013G081700.3

CMGC_DYRK-PRP4

Ppa_Pp1s47_312V6

Smo_90432

Vvi_GSVIVT01032814001

Gorai.011G288600.1

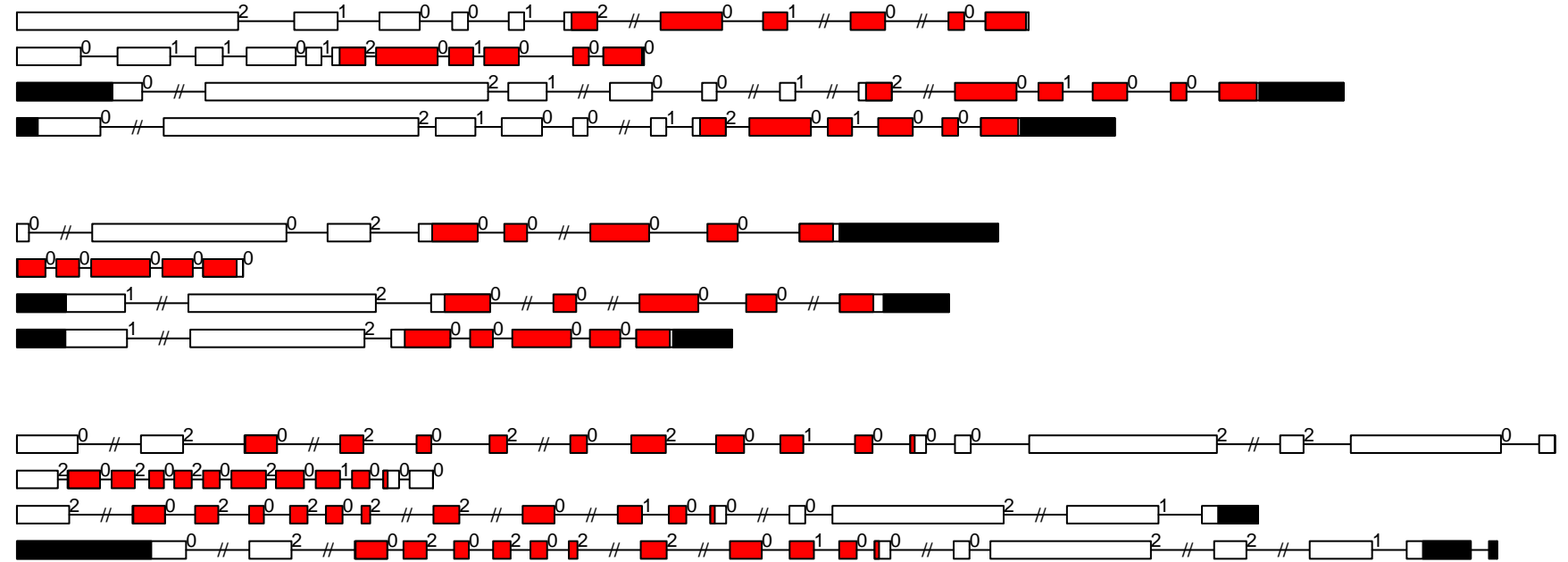
CMGC_DYRK-YAK

Ppa_Pp1s401_7V6

Smo_111790

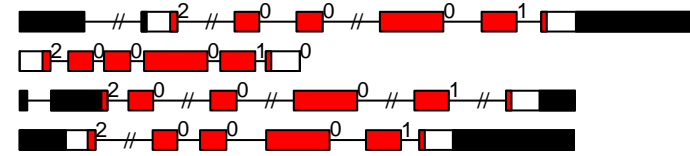
Vvi_GSVIVT01024260001

Gorai.013G185200.1

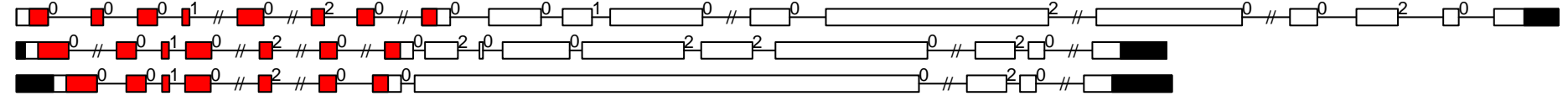


CMGC conserved exon-intron and domain diagram (part 5)

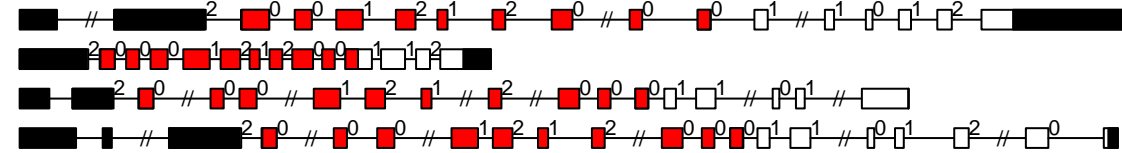
CMGC_MAPK
 Ppa_Pp1s149_39V6
 Smo_105143
 Vvi_GSVIVT01038192001
 Gorai.009G103800.1



CMGC_PI-Tthe
 Ppa_Pp1s99_254V6
 Vvi_GSVIVT01015287001
 Gorai.009G028000.1



CMGC_RCK
 Ppa_Pp1s173_136V6
 Smo_443358
 Vvi_GSVIVT01005924001
 Gorai.007G157300.1



-2000

0

2000

4000

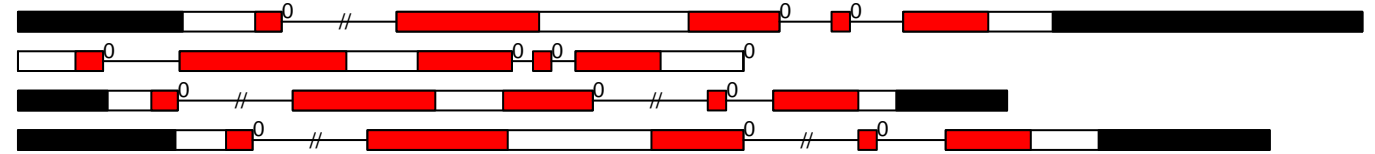
6000

8000

10000

CMGC conserved exon-intron and domain diagram (part 6)

CMGC_SRPK
Ppa_Pp1s248_102V6
Smo_110202
Vvi_GSVIVT01022292001
Gorai.009G088800.1



-2000

-1000

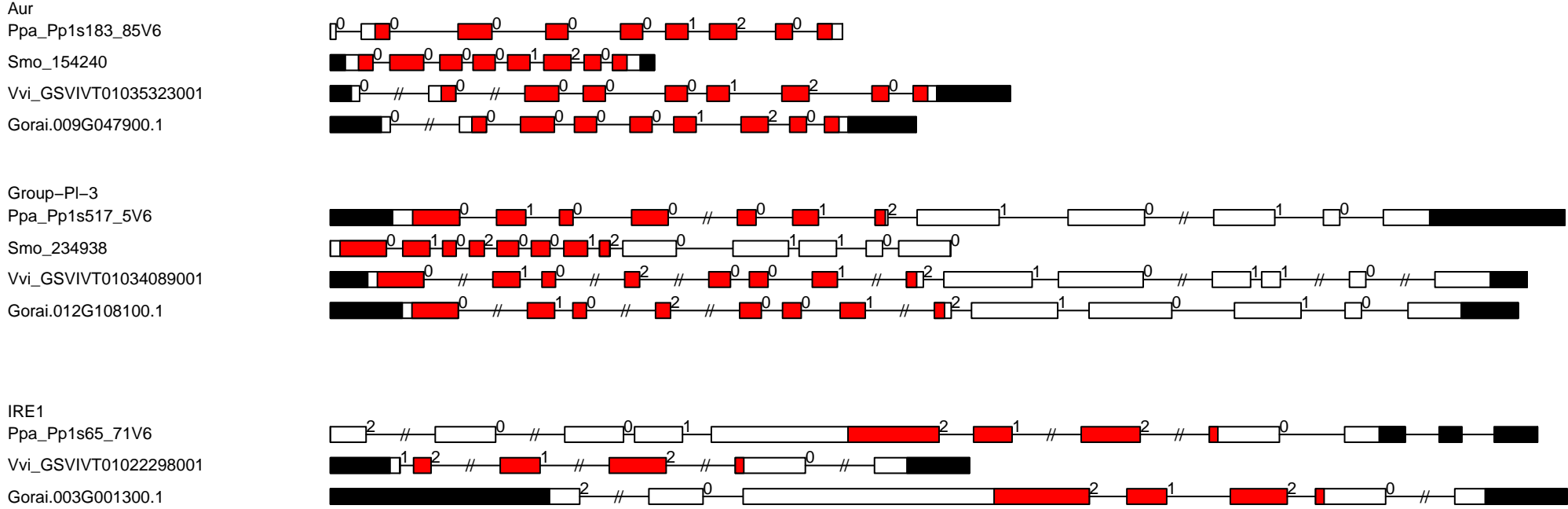
0

1000

2000

3000

other conserved exon-intron and domain diagram (part 1)



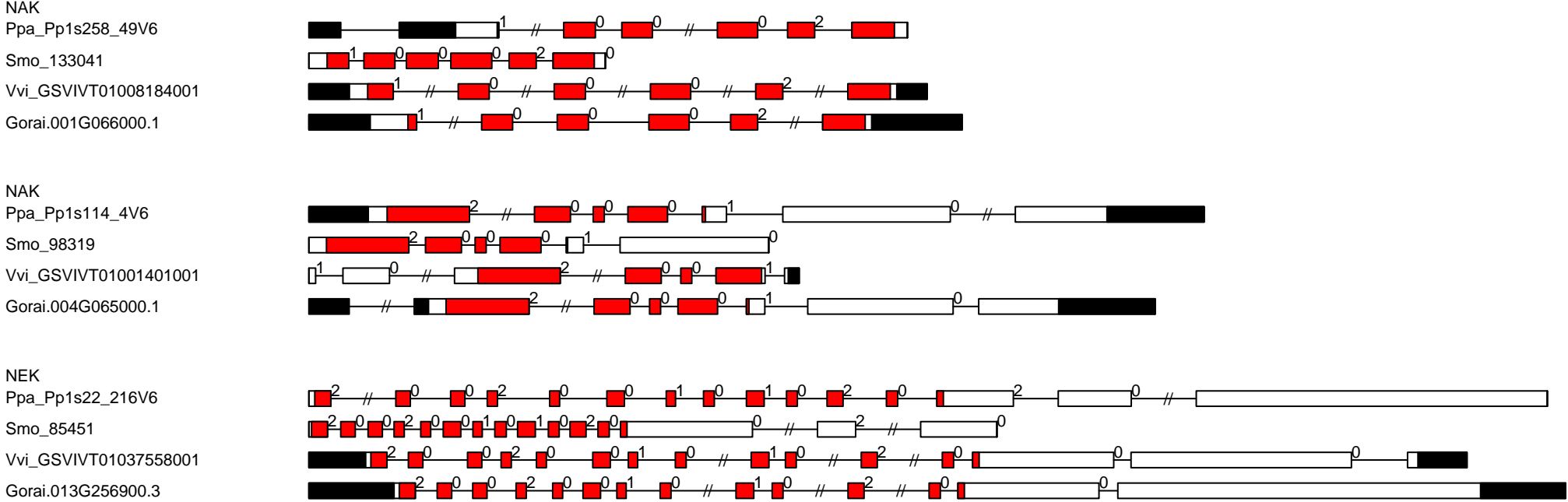
-2000

0

2000

4000

other conserved exon-intron and domain diagram (part 2)



other conserved exon-intron and domain diagram (part 3)

PEK_GCN2

Ppa_Pp1s159_135V6

Smo_75952

Vvi_GSVIVT01010758001

Gorai.011G142600.1

TLK

Ppa_Pp1s260_29V6

Smo_230254

Vvi_GSVIVT01037513001

Gorai.013G256500.1

TTK

Ppa_Pp1s4_22V6

Smo_70574

Vvi_GSVIVT01008926001

Gorai.009G243100.1

-2000

0

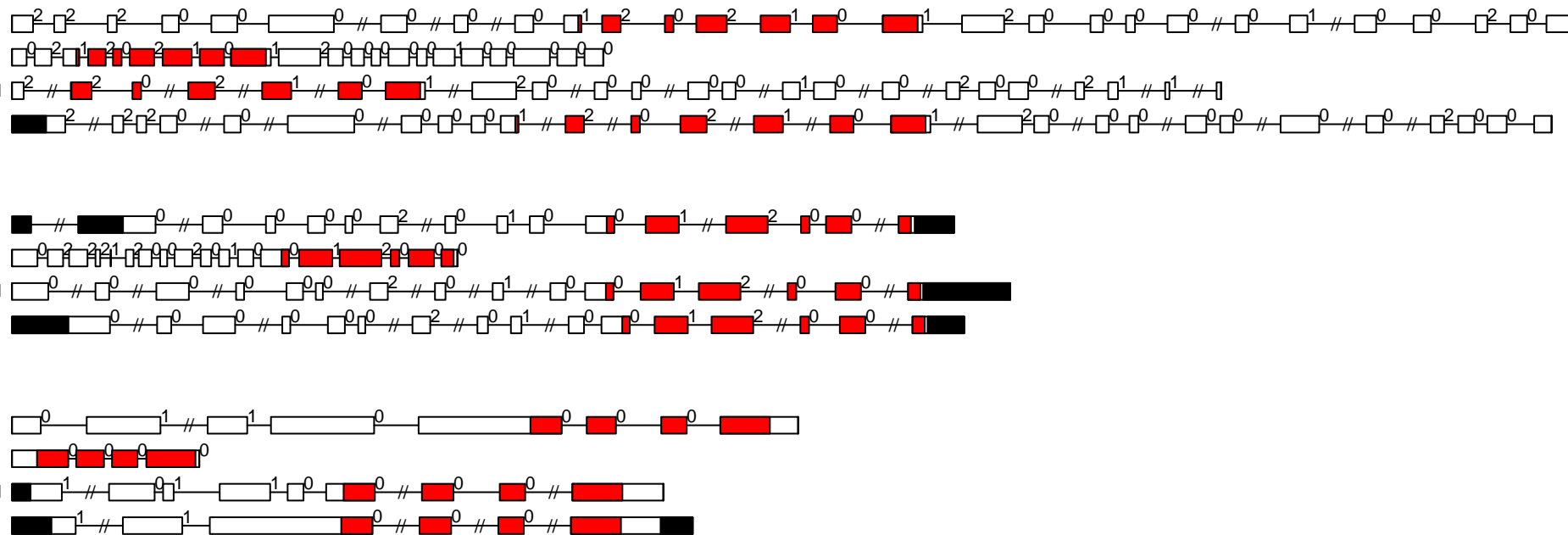
2000

4000

6000

8000

10000



other conserved exon-intron and domain diagram (part 4)

ULK_Fused

Ppa_Pp1s53_93V6

Vvi_GSVIVT01024439001

Gorai.012G007600.2

ULK_ULK4

Ppa_Pp1s358_12V6

Vvi_GSVIVT01017819001

Gorai.011G185300.1

WEE

Smo_171221

Vvi_GSVIVT01010948001

Gorai.007G129700.1

WNK_NRBP

Ppa_Pp1s384_6V6

Smo_134331

Vvi_GSVIVT01027189001

Gorai.001G064400.1



-2000

0

2000

4000

6000

8000

10000

RLK-Pelle conserved exon-intron and domain diagram (part 1)

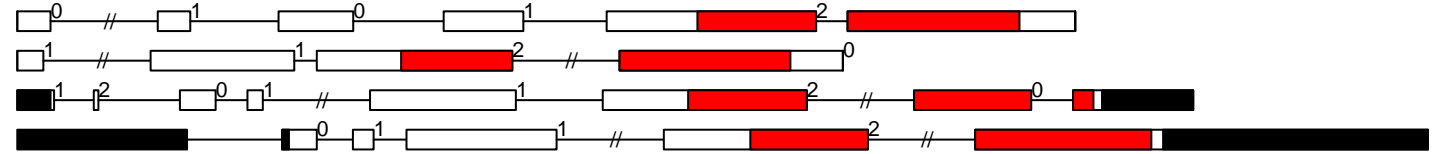
RLK-Pelle_C-LEC

Ppa_Pp1s409_19V6

Smo_82185

Vvi_GSVIVT01014051001

Gorai.002G163600.1



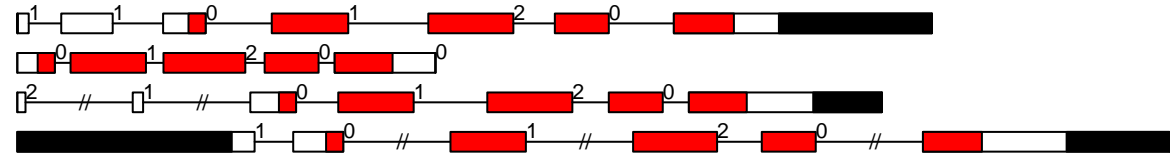
RLK-Pelle_DLSV

Ppa_Pp1s149_106V6

Smo_90825

Vvi_GSVIVT01006739001

Gorai.002G176300.2

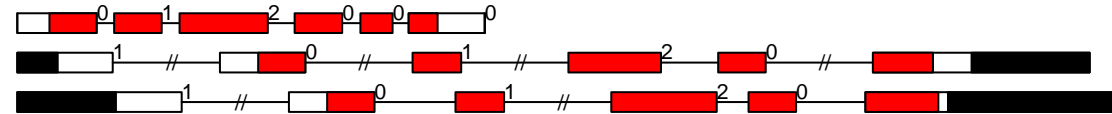


RLK-Pelle_Extensin

Smo_97344

Vvi_GSVIVT01020728001

Gorai.011G123200.1



-2000

-1000

0

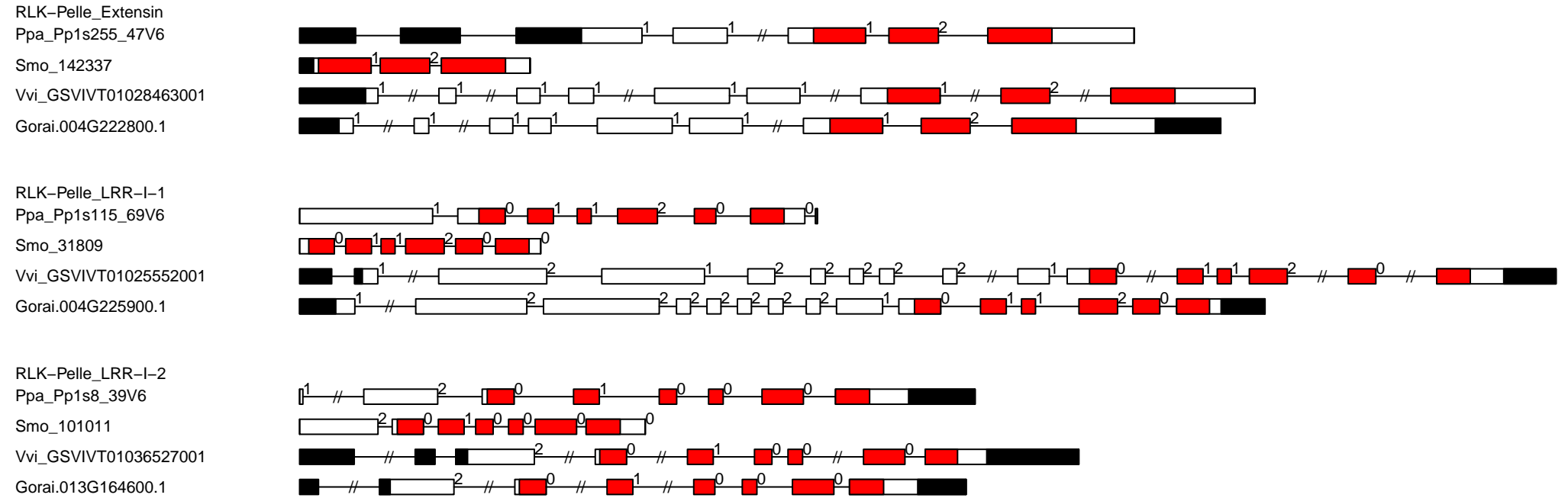
1000

2000

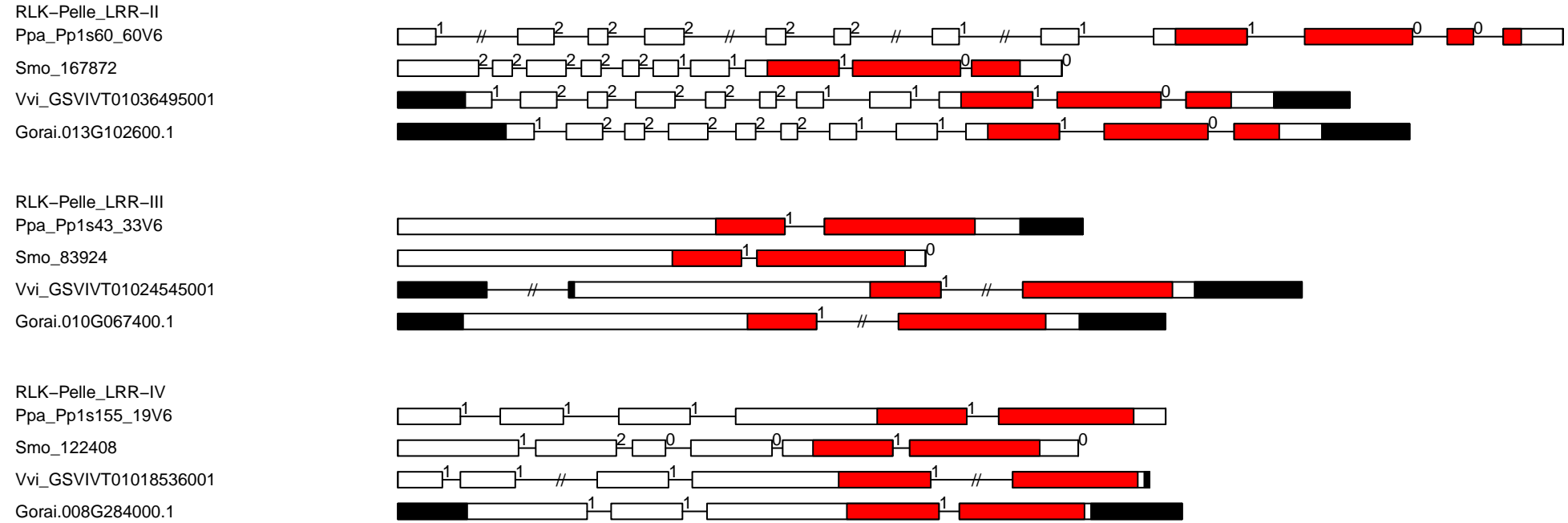
3000

4000

RLK-Pelle conserved exon-intron and domain diagram (part 2)



RLK-Pelle conserved exon-intron and domain diagram (part 3)



RLK-Pelle conserved exon-intron and domain diagram (part 4)

RLK-Pelle_LRR-IX
Ppa_Pp1s245_46V6

Smo_233622

Vvi_GSVIVT01031618001

Gorai.001G125200.1

RLK-Pelle_LRR-VI-1

Ppa_Pp1s34_39V6

Smo_85275

Vvi_GSVIVT01034604001

Gorai.N006900.1

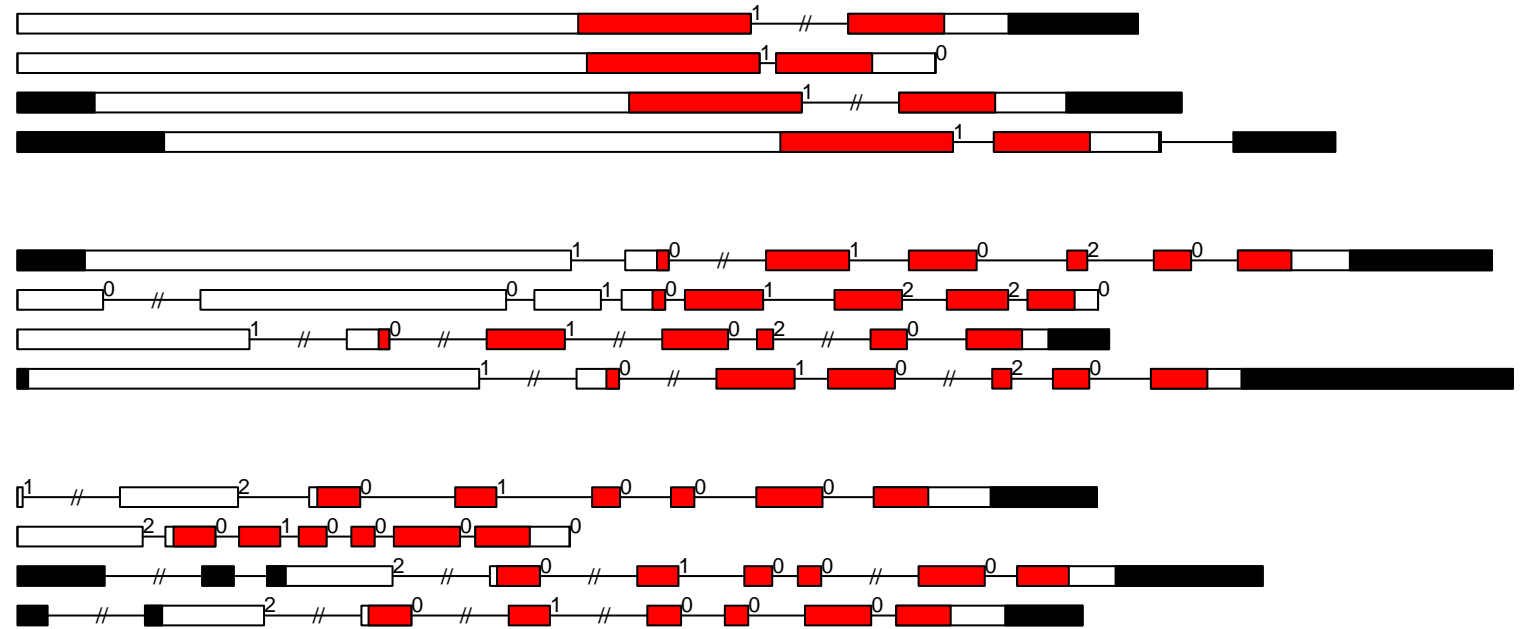
RLK-Pelle_LRR-VI-2

Ppa_Pp1s8_39V6

Smo_101011

Vvi_GSVIVT01036527001

Gorai.013G164600.1



-2000

0

2000

4000

RLK-Pelle conserved exon-intron and domain diagram (part 5)

RLK-Pelle_LRR-VIII-1

Ppa_Pp1s128_94V6

Smo_10265

Vvi_GSVIVT01024538001

Gorai.013G271600.2

RLK-Pelle_LRR-V

Ppa_Pp1s379_14V6

Smo_76873

Smo_112070

Vvi_GSVIVT01033522001

Gorai.011G024500.1

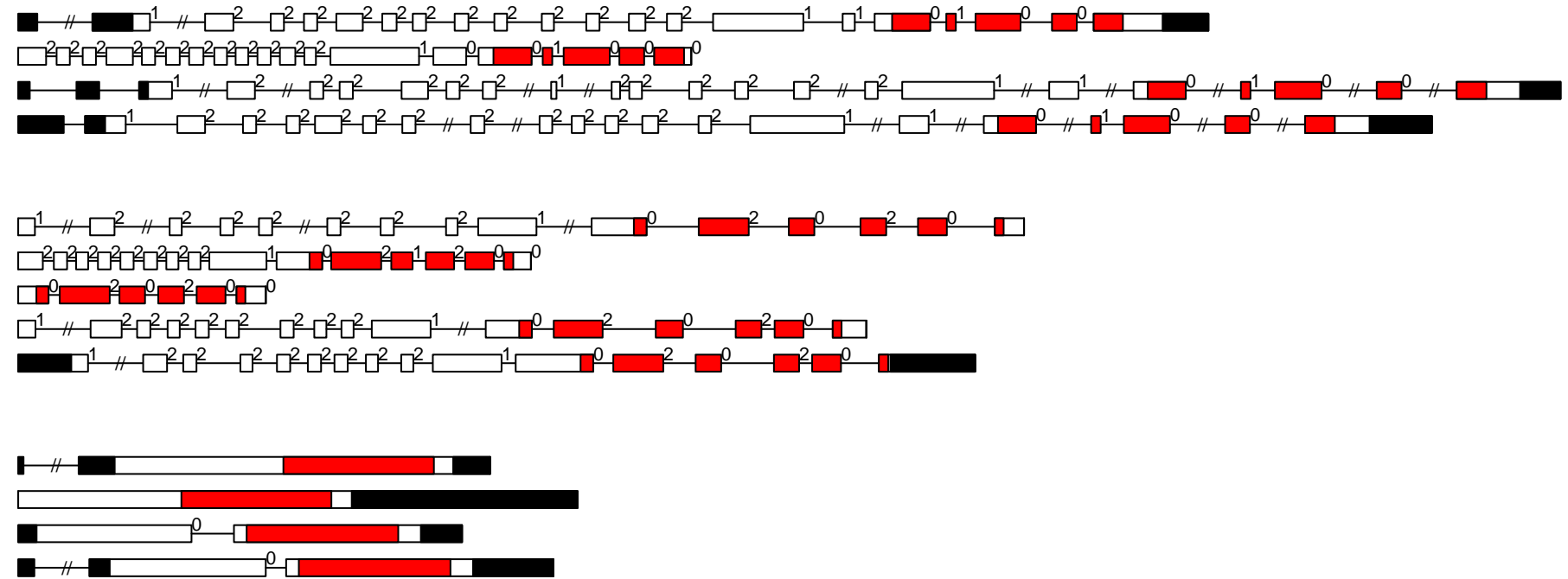
RLK-Pelle_LRR-Xa

Ppa_Pp1s173_42V6

Smo_165616

Vvi_GSVIVT01006063001

Gorai.007G161400.3



-2000

0

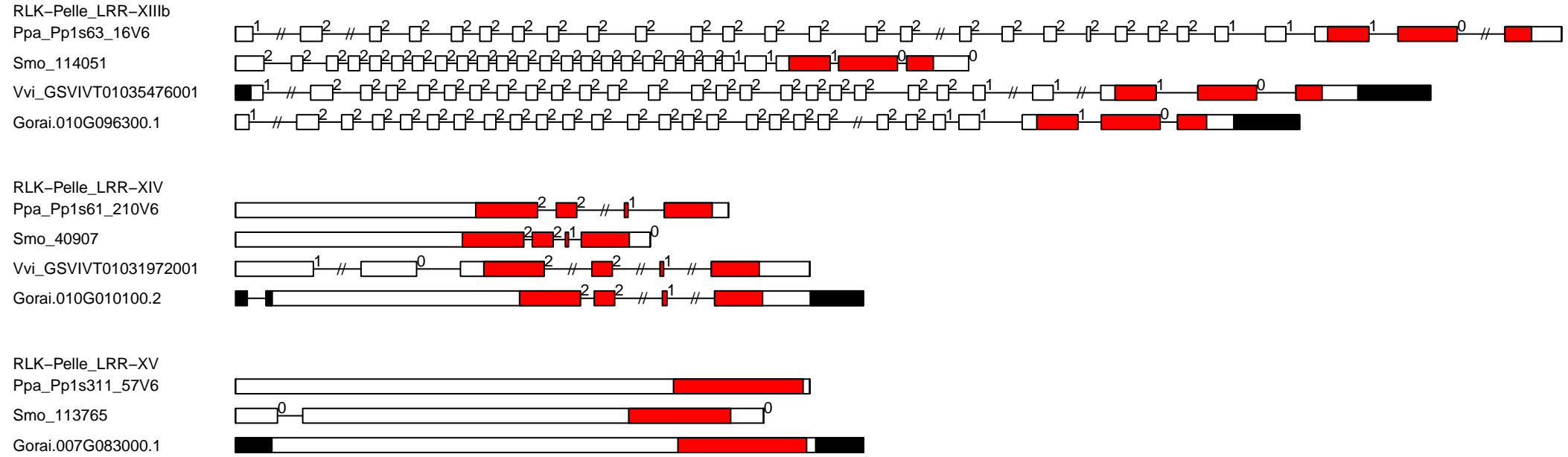
2000

4000

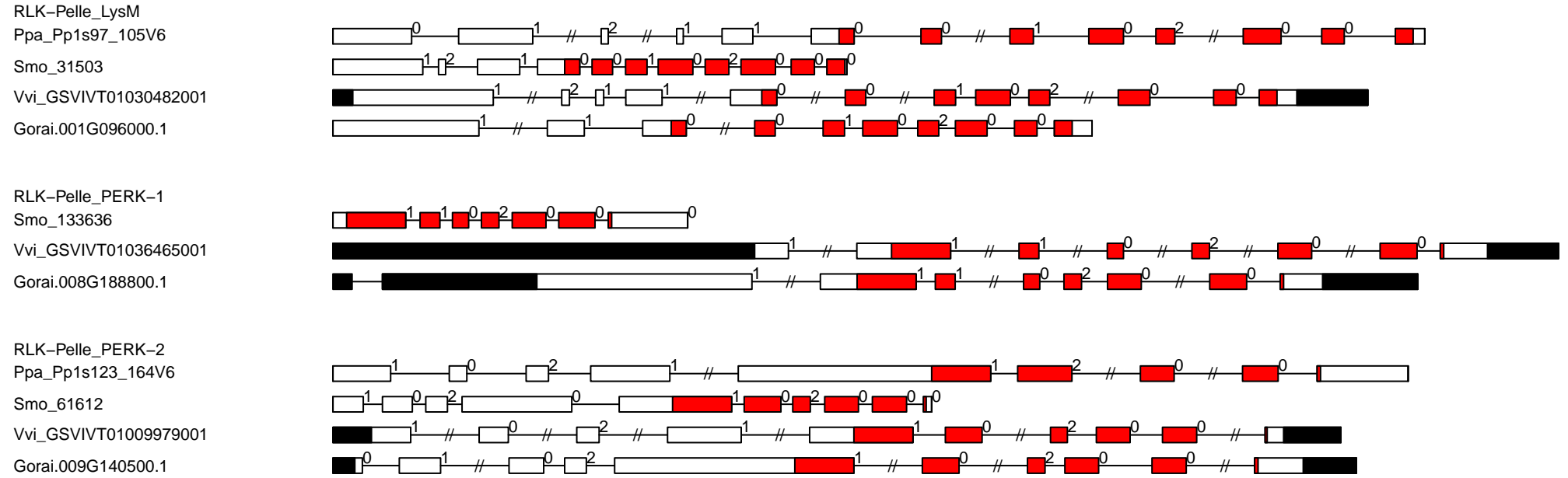
6000

8000

RLK-Pelle conserved exon-intron and domain diagram (part 7)



RLK-Pelle conserved exon-intron and domain diagram (part 8)



-2000

0

2000

4000

RLK-Pelle conserved exon-intron and domain diagram (part 9)

RLK-Pelle_RKF3

Ppa_Pp1s58_68V6

Smo_127641

Gorai.008G006500.1

RLK-Pelle_RLCK-IV

Ppa_Pp1s12_33V6

Smo_65160

Vvi_GSVIVT01024803001

Gorai.001G114800.1

RLK-Pelle_RLCK-IXa

Smo_131164

Vvi_GSVIVT01032970001

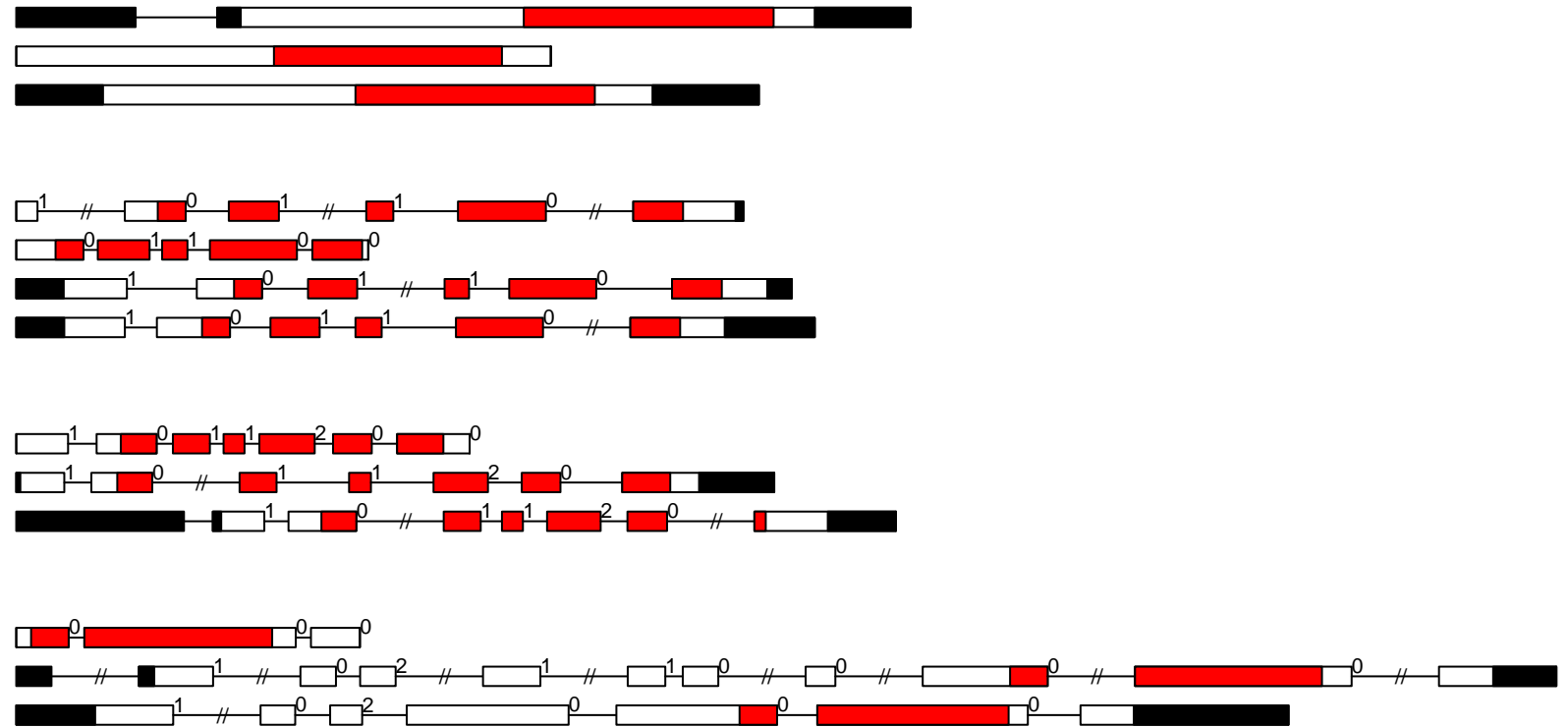
Gorai.011G188000.2

RLK-Pelle_RLCK-IXb

Smo_33560

Vvi_GSVIVT01014020001

Gorai.013G264000.1



RLK-Pelle conserved exon-intron and domain diagram (part 11)

RLK-Pelle_RLCK-VIII

Ppa_Pp1s87_149V6

Smo_231705

Vvi_GSVIVT01017680001

Gorai.012G099200.1

RLK-Pelle_RLCK-VI

Ppa_Pp1s9_56V6

Smo_64103

Vvi_GSVIVT01002864001

Gorai.002G026700.1

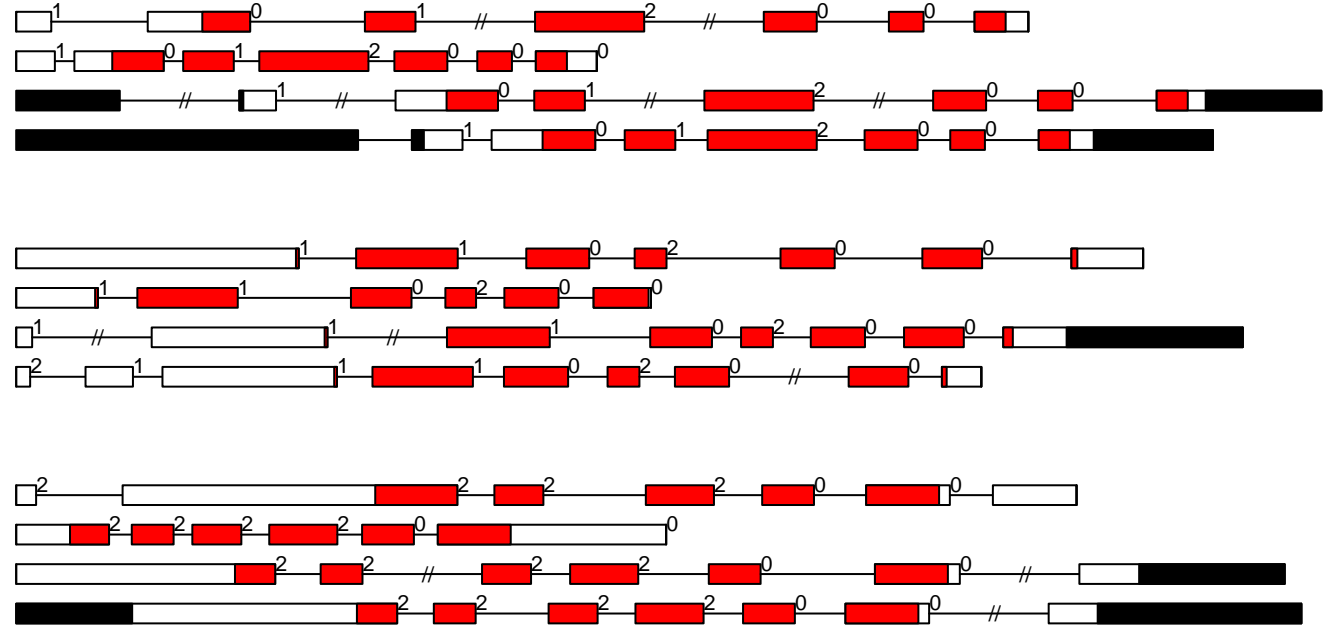
RLK-Pelle_RLCK-V

Ppa_Pp1s358_6V6

Smo_112967

Vvi_GSVIVT01017681001

Gorai.012G040400.2



-2000

-1000

0

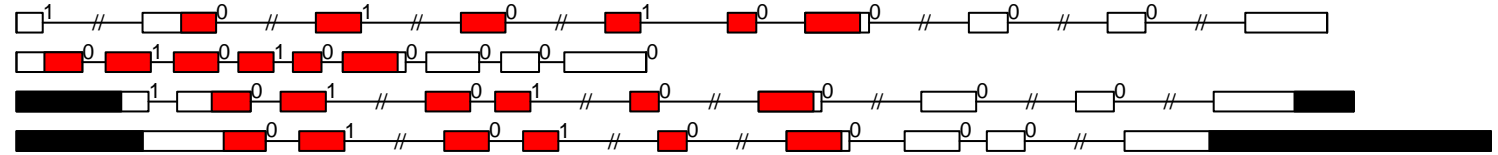
1000

2000

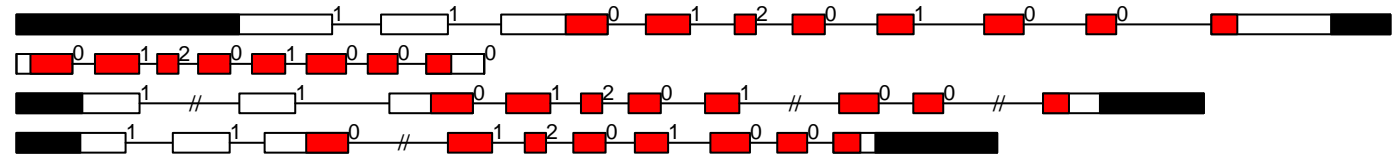
3000

RLK-Pelle conserved exon-intron and domain diagram (part 12)

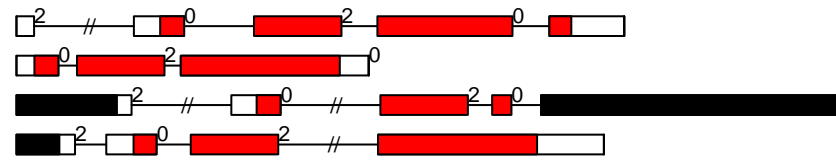
RLK-Pelle_RLCK-XII-1
 Ppa_Pp1s328_52V6
 Smo_103506
 Vvi_GSVIVT01034043001
 Gorai.009G188600.1



RLK-Pelle_RLCK-X
 Ppa_Pp1s41_247V6
 Smo_92161
 Vvi_GSVIVT01035915001
 Gorai.010G223000.1



RLK-Pelle_RLCK-XV
 Ppa_Pp1s312_17V6
 Smo_99707
 Vvi_GSVIVT01017345001
 Gorai.012G095600.1



-2000

0

2000

4000

SCY1 conserved exon-intron and domain diagram (all)

SCY1_SCYL1

Smo_230150

Vvi_GSVIVT01032663001

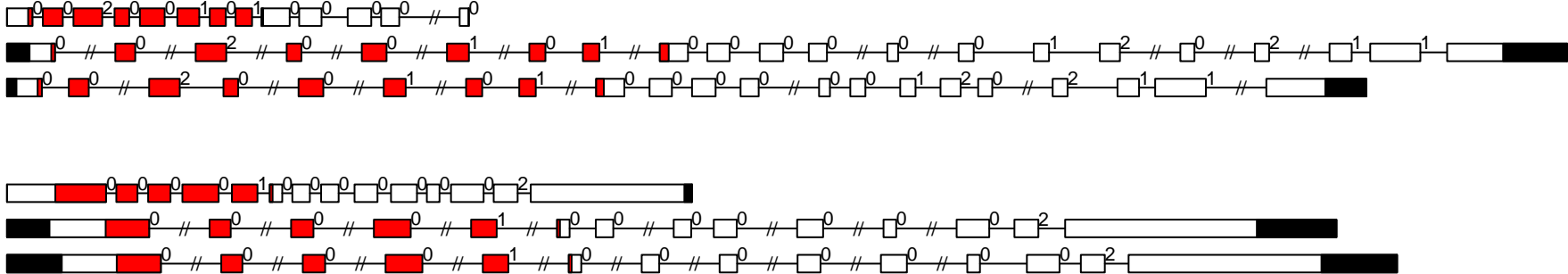
Gorai.010G219100.1

SCY1_SCYL2

Smo_165698

Vvi_GSVIVT01037227001

Gorai.009G290500.1



STE conserved exon-intron and domain diagram (part 1)

STE_STE11

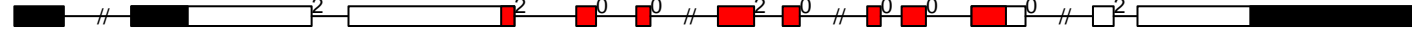
Ppa_Pp1s8_299V6



Smo_55695



Vvi_GSVIVT01028897001

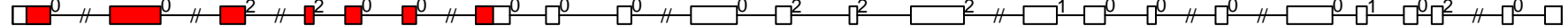


Gorai.011G104700.2



STE_STE20-Fray

Ppa_Pp1s407_24V6



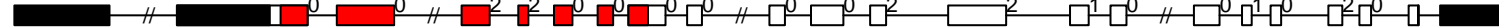
Smo_92988



Vvi_GSVIVT01032461001



Gorai.011G095700.3

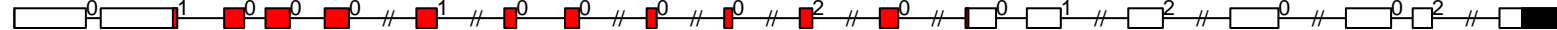


STE_STE20-PI

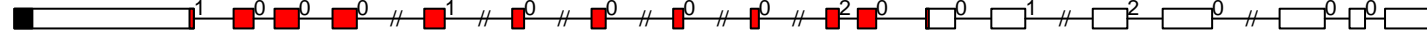
Smo_30736



Vvi_GSVIVT01012233001



Gorai.008G176300.1



-2000

0

2000

4000

6000

8000

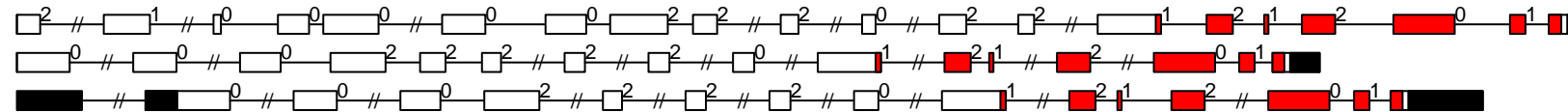
TKL conserved exon-intron and domain diagram (part 1)

TKL_CTR1-DRK-1

Ppa_Pp1s63_65V6

Vvi_GSVIVT01020712001

Gorai.012G046800.2



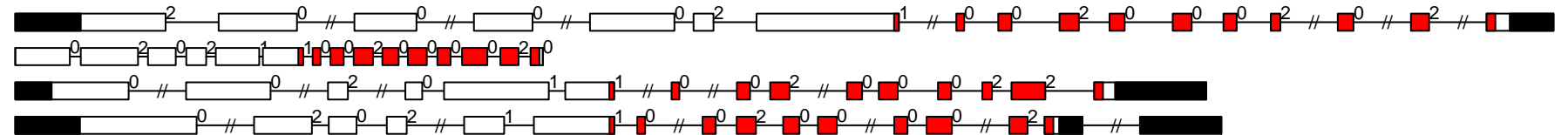
TKL_CTR1-DRK-2

Ppa_Pp1s462_10V6

Smo_10499

Vvi_GSVIVT01035409001

Gorai.006G158200.1



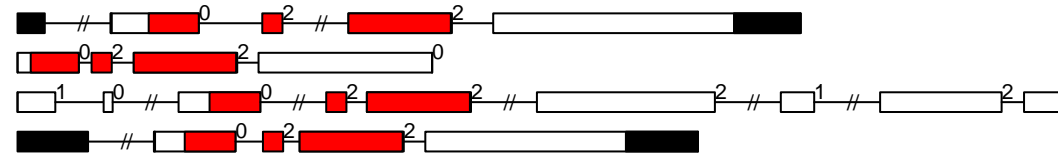
TKL-PI-1

Ppa_Pp1s414_18V6

Smo_52199

Vvi_GSVIVT01017348001

Gorai.010G225000.1



-2000

0

2000

4000

6000

8000

TKL conserved exon-intron and domain diagram (part 2)

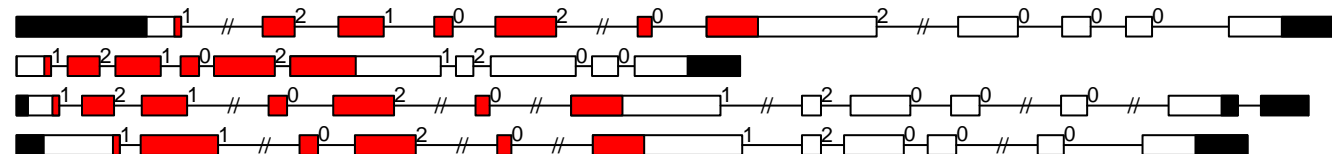
TKL-PI-3

Ppa_Pp1s60_107V6

Smo_441116

Vvi_GSVIVT01025802001

Gorai.013G001000.1



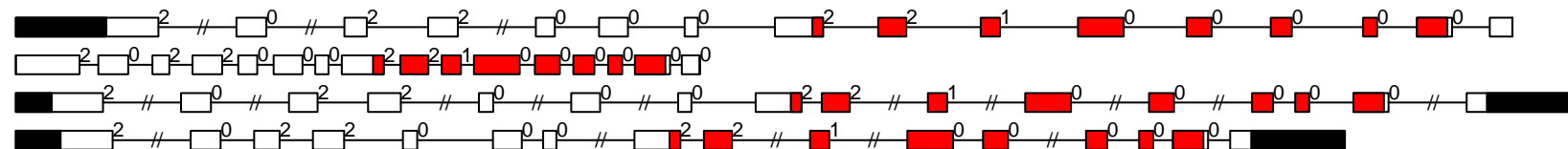
TKL-PI-4

Ppa_Pp1s43_196V6

Smo_444789

Vvi_GSVIVT01023958001

Gorai.007G190200.1

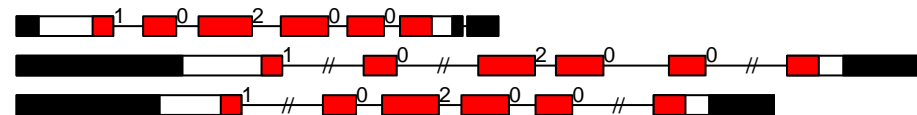


TKL-PI-4

Smo_271276

Vvi_GSVIVT01001193001

Gorai.004G077900.1



-2000

0

2000

4000

6000

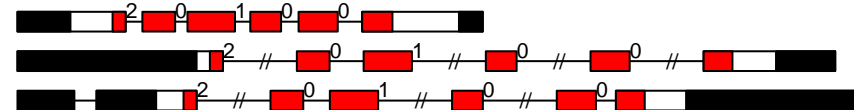
TKL conserved exon-intron and domain diagram (part 3)

TKL-PI-4

Smo_160379

Vvi_GSVIVT01030194001

Gorai.005G004900.1



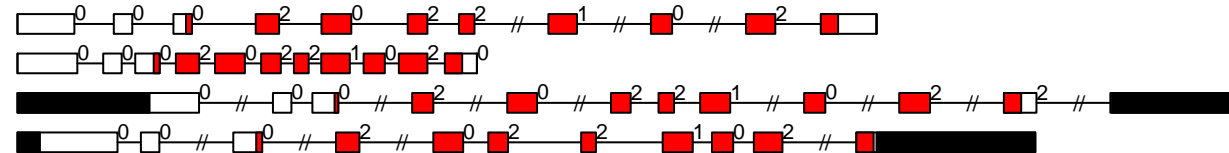
TKL-PI-5

Ppa_Pp1s31_260V6

Smo_130298

Vvi_GSVIVT01038213001

Gorai.013G089100.2



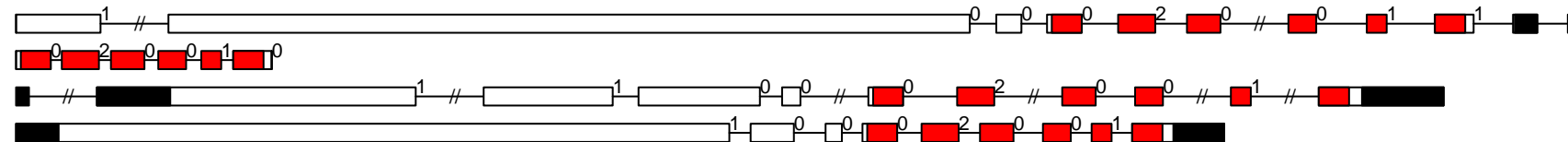
TKL-PI-6

Ppa_Pp1s66_220V6

Smo_88196

Vvi_GSVIVT01036758001

Gorai.010G056300.1



-2000

0

2000

4000

6000