

Supplementary Materials for **Mannan-induced Nos2 in macrophages enhances IL-17–driven psoriatic arthritis by innate lymphocytes**

Jianghong Zhong, Tatjana Scholz, Anthony C. Y. Yau, Simon Guerard, Ulrike Hüffmeier, Harald Burkhardt, Rikard Holmdahl

Published 16 May 2018, *Sci. Adv.* **4**, eaas9864 (2018)
DOI: 10.1126/sciadv.aas9864

This PDF file includes:

- fig. S1. Representative flow cytometry gating scheme for NOS2 expression analysis in human IFN- γ /LPS–activated MDSCs and in vitro–differentiated TIP DCs.
- fig. S2. Representative flow cytometry gating scheme for skin ILC3 analysis at the paw.
- fig. S3. Representative flow cytometry gating scheme for skin $\gamma\delta$ T cells analysis at the paw.

Supplementary Materials

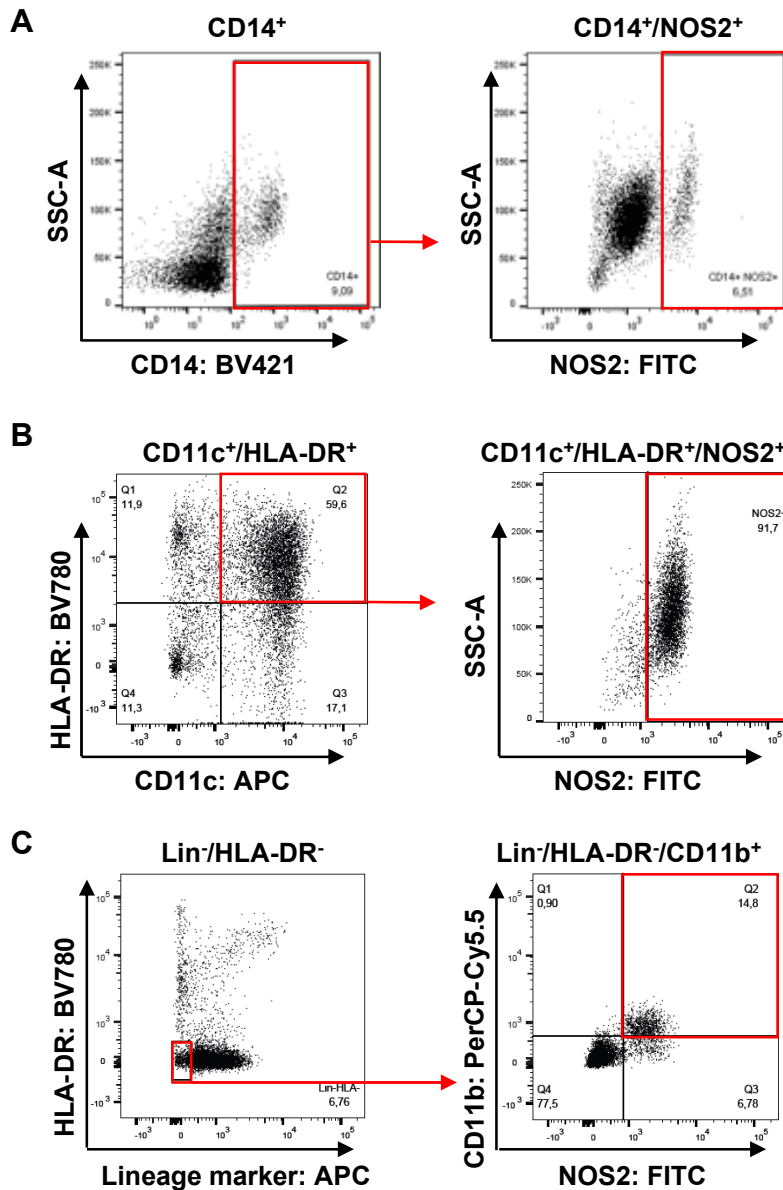


fig. S1. Representative flow cytometry gating scheme for NOS2 expression analysis in human IFN- γ /LPS-activated MDSCs and in vitro-differentiated TIP DCs. (A) Gating scheme for NOS2 expression analysis in the *in vitro* activated CD14⁺ subset of PBMCs: the whole cell population of PBMCs > single cells > living cells > CD14⁺ > mean fluorescence intensity (MFI) of NOS2 expression was analyzed. (B) In vitro differentiated cells from a CD14 enriched PBMCs population. Gating scheme: the whole cell population > single cells > living cells > CD11c⁺/HLA-DR⁺/NOS2⁺ > MFI of NOS2 expression was analyzed. (C) Gating scheme for NOS2 expression analysis in the *in vitro* activated MDSC-subset of PBMCs: the whole cell population of PBMCs > single cells > living cells > Lin⁻/HLA-DR⁻/CD11b⁺ > mean fluorescence intensity (MFI) of NOS2 expression was analyzed.

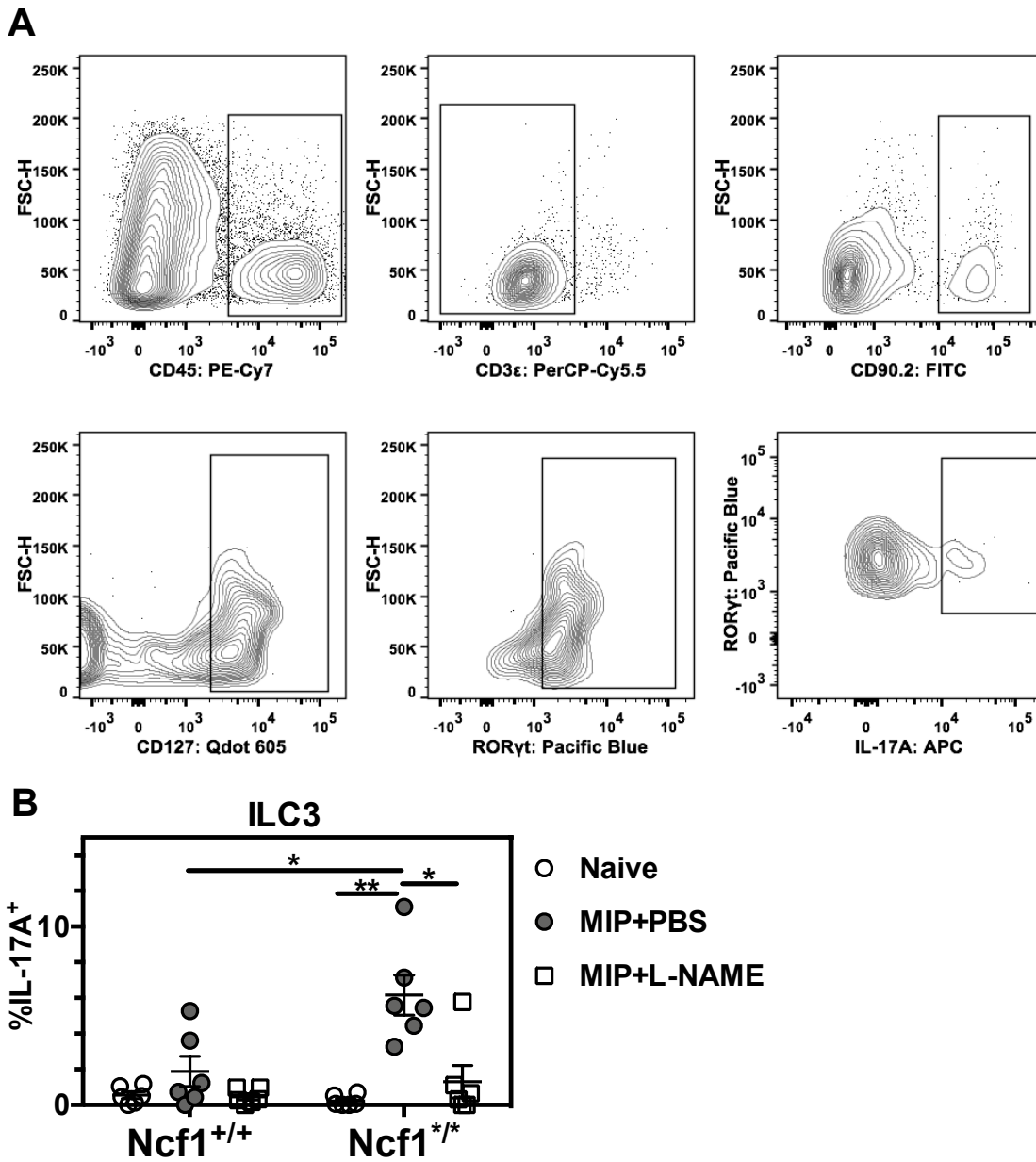


fig. S2. Representative flow cytometry gating scheme for skin ILC3 analysis at the paw. (A) Gating scheme for type 3 innate lymphoid cells ($CD3^- CD90.2^+ CD127^+ ROR\gamma t^+ CD45^+$ live cells) (ILC3) analysis from the live single lymphocytes in the skin. (B) Frequency of $IL-17A^+$ expression in ILC3 from the skin cells at the hind paws of $Ncf1^{+/+}$ and $Ncf1^{*/*}$ mice. Representative results are shown as mean \pm SEM from one of two independent experiments with the similar results.

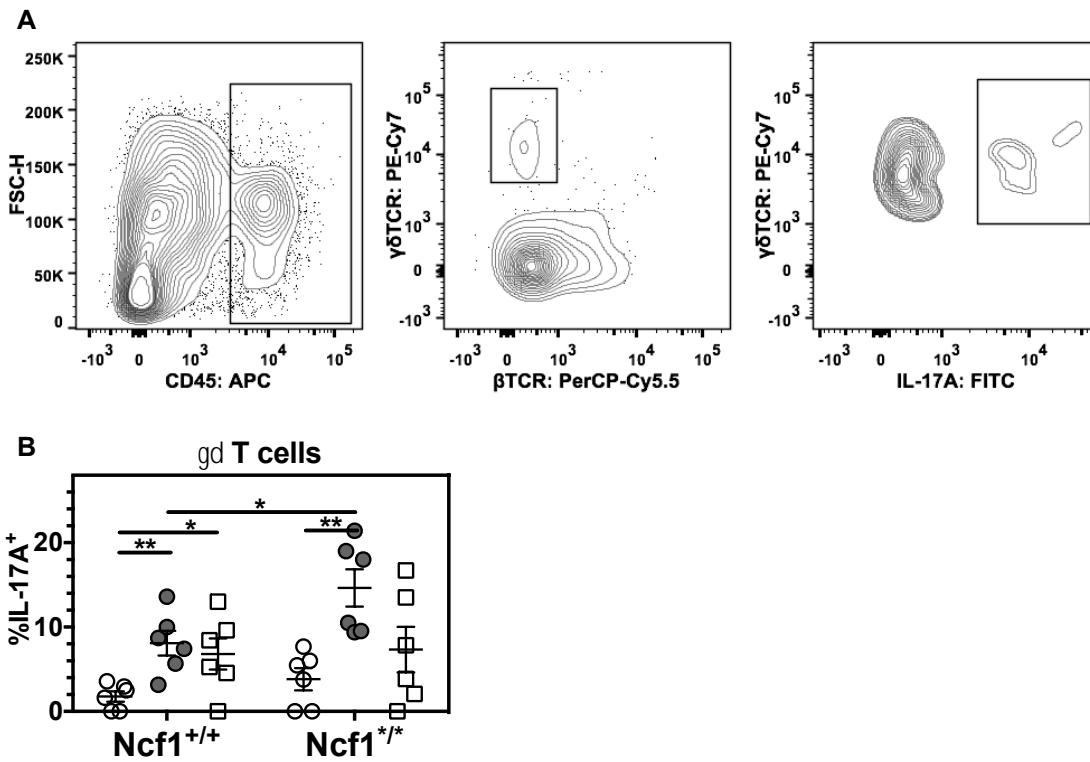


fig. S3. Representative flow cytometry gating scheme for skin $\gamma\delta$ T cells analysis at the paw. (A) Gating scheme for $\gamma\delta$ T cells ($\gamma\delta$ TCR⁺ β TCR⁻CD45⁺ live cells) analysis from the live single lymphocytes in the skin. (B) Frequency of IL-17A⁺ expression in $\gamma\delta$ T cells from the skin cells at the hind paws of *Ncf1*^{+/+} and *Ncf1*^{*/*} mice. Representative results are shown as mean \pm SEM from one of two independent experiments with similar results.