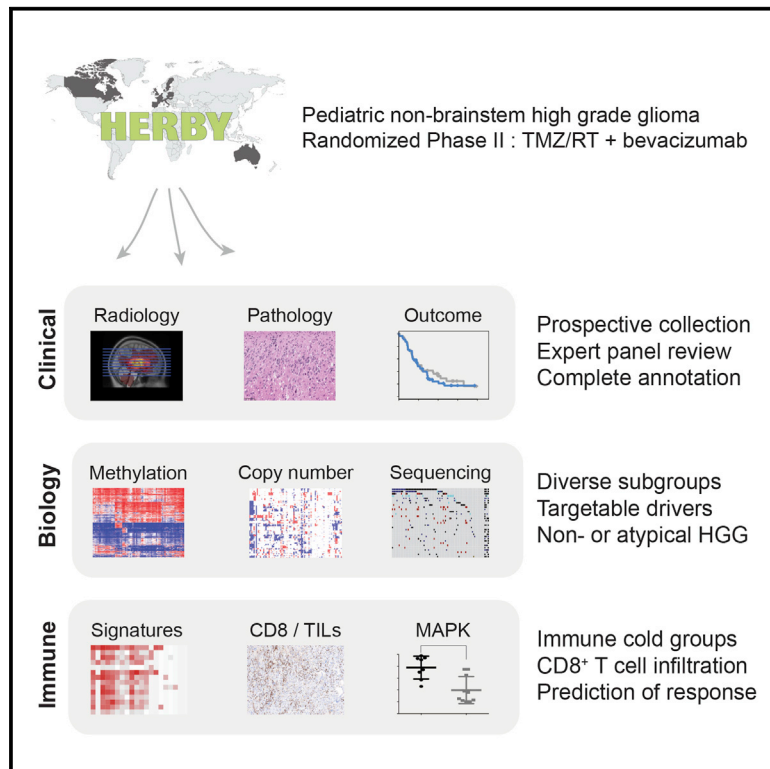


Molecular, Pathological, Radiological, and Immune Profiling of Non-brainstem Pediatric High-Grade Glioma from the HERBY Phase II Randomized Trial

Graphical Abstract



Authors

Alan Mackay, Anna Burford,
Valeria Molinari, ..., Tim Jaspan,
Pascale Varlet, Chris Jones

Correspondence

chris.jones@icr.ac.uk

In Brief

In a pediatric high-grade non-brainstem glioma cohort, Mackay et al. show that hypermutator tumors and those resembling pleomorphic xanthoastrocytoma are highly infiltrated by CD8⁺ lymphocytes and benefit from the addition of bevacizumab, whereas the histone H3 subgroups are immune cold and have a poor outcome.

Highlights

- The HERBY trial tested the use of bevacizumab in pediatric non-brainstem HGG
- Parallel translational biology studies highlighted the diversity of the trial cohort
- Elevated levels of CD8⁺ T cells were seen in PXA-like and hypermutant tumors
- MAPK-associated immune signatures predicted response to bevacizumab



Molecular, Pathological, Radiological, and Immune Profiling of Non-brainstem Pediatric High-Grade Glioma from the HERBY Phase II Randomized Trial

Alan Mackay,^{1,2} Anna Burford,^{1,2} Valeria Molinari,^{1,2} David T.W. Jones,^{3,4} Elisa Izquierdo,^{1,2} Jurriaan Brouwer-Visser,⁶ Felice Giangaspero,^{7,8} Christine Haberler,^{9,10} Torsten Pietsch,¹¹ Thomas S. Jacques,^{12,13} Dominique Figarella-Branger,¹⁴ Daniel Rodriguez,¹⁵ Paul S. Morgan,¹⁵ Pichai Raman,^{16,17} Angela J. Waanders,^{16,18} Adam C. Resnick,^{16,17,18}

(Author list continued on next page)

¹Division of Molecular Pathology, The Institute of Cancer Research, 15 Cotswold Road, Sutton, London, Surrey SM2 5NG, UK

²Division of Cancer Therapeutics, The Institute of Cancer Research, 15 Cotswold Road, Sutton, London, Surrey SM2 5NG, UK

³Hopp Children's Cancer Center at the NCT Heidelberg (KiTZ), Heidelberg, Germany

⁴Division of Paediatric Neuro-oncology, German Cancer Consortium (DKTK), German Cancer Research Center (DKFZ), Heidelberg, Germany

⁵Department of Pediatric Hematology and Oncology, Heidelberg University Hospital, Heidelberg, Germany

⁶Roche Innovation Center, New York, NY, USA

⁷Department of Radiology, Oncology and Anatomic-Pathology Sciences, Sapienza University, Rome, Italy

⁸IRCCS Neuromed, Pozzilli, Italy

⁹Institute of Neurology, Medical University of Vienna, Vienna, Austria

¹⁰Comprehensive Cancer Center, Medical University of Vienna, Vienna, Austria

¹¹DGNN Brain Tumor Reference Center, Institute of Neuropathology, University of Bonn Medical Center, Bonn, Germany

¹²UCL Great Ormond Street Institute of Child Health, London, UK

¹³Department of Histopathology, Great Ormond Street Hospital for Children, London, UK

(Affiliations continued on next page)

SUMMARY

The HERBY trial was a phase II open-label, randomized, multicenter trial evaluating bevacizumab (BEV) in addition to temozolomide/radiotherapy in patients with newly diagnosed non-brainstem high-grade glioma (HGG) between the ages of 3 and 18 years. We carried out comprehensive molecular analysis integrated with pathology, radiology, and immune profiling. In *post-hoc* subgroup analysis, hypermutator tumors (mismatch repair deficiency and somatic *POLE/POLD1* mutations) and those biologically resembling pleomorphic xanthoastrocytoma ([PXA]-like, driven by *BRAF_V600E* or *NF1* mutation) had significantly more CD8⁺ tumor-infiltrating lymphocytes, and longer survival with the addition of BEV. Histone H3 subgroups (hemispheric G34R/V and midline K27M) had a worse outcome and were immune cold. Future clinical trials will need to take into account the diversity represented by the term “HGG” in the pediatric population.

INTRODUCTION

High-grade gliomas (HGGs) in children, like their adult counterparts, continue to have a bleak prognosis, with a median overall survival (OS) of 9–15 months (Cohen et al., 2011; Jones et al.,

2016; Ostrom et al., 2015). Recent integrated molecular-profiling initiatives have shown that pediatric HGGs (pHGGs) are biologically distinct from their adult counterparts, with subgroups of the disease marked by recurrent mutations in genes encoding histone H3 variants having different age of incidence, anatomical

Significance

We validate in the prospective clinical trial setting the biological and clinical diversity of pediatric high-grade glioma previously described in large retrospective series, underpinned by detailed pathological and radiological analysis. Although adding bevacizumab (BEV) to standard temozolomide/radiotherapy did not improve survival across the whole cohort, we identify disease subgroups with MAPK activation to harbor an enhanced CD8⁺ T cell immune response, which may derive benefit from the addition of BEV. If confirmed in another study, this would represent a useful predictive biomarker for this regimen in these tumors, and points the way for therapeutic strategies for subgroups of children with high-grade glioma.



Maura Massimino,¹⁹ Maria Luisa Garrè,²⁰ Helen Smith,²¹ David Capper,^{22,23,24} Stefan M. Pfister,^{3,4,5} Thomas Würdinger,²⁵ Rachel Tam,²⁶ Josep Garcia,²¹ Meghna Das Thakur,²⁶ Gilles Vassal,²⁷ Jacques Grill,²⁷ Tim Jaspán,¹⁵ Pascale Varlet,²⁸ and Chris Jones^{1,2,29,*}

¹⁴Department of Pathology and Neuropathology, La Timone Hospital, Aix Marseille University, Marseille, France

¹⁵Nottingham University Hospitals, Nottingham, UK

¹⁶The Center for Data Driven Discovery in Biomedicine (D³b), Children's Hospital of Philadelphia, Philadelphia, PA, USA

¹⁷Division of Neurosurgery, Children's Hospital of Philadelphia, Philadelphia, PA, USA

¹⁸Division of Oncology, Children's Hospital of Philadelphia, Philadelphia, PA, USA

¹⁹Pediatric Oncology Unit, Fondazione IRCCS, Istituto Nazionale Tumori, Milan, Italy

²⁰Centro di Neuro-Oncologia, Istituto Giannina Gaslini, Genoa, Italy

²¹F. Hoffmann-La Roche Ltd, Basel, Switzerland

²²Charité – Universitätsmedizin Berlin, Corporate Member of Freie Universität Berlin, Humboldt-Universität zu Berlin, Berlin, Germany

²³Berlin Institute of Health, Institute of Neuropathology, Berlin, Germany

²⁴Department of Neuropathology, University Hospital Heidelberg and Clinical Cooperation Unit Neuropathology, German Cancer Consortium (DKTK), German Cancer Research Center (DKFZ), Heidelberg, Germany

²⁵Department of Neurosurgery, Brain Tumor Center Amsterdam, VU Medical Center, Amsterdam, the Netherlands

²⁶Genentech, South San Francisco, CA, USA

²⁷Pediatric and Adolescent Oncology and Unite Mixte de Recherche 8203 du Centre National de la Recherche Scientifique, Gustave Roussy, Paris-Saclay University, Villejuif, France

²⁸Sainte-Anne Hospital, Paris-Descartes University, Paris, France

²⁹Lead contact

*Correspondence: chris.jones@icr.ac.uk

<https://doi.org/10.1016/j.ccell.2018.04.004>

location, clinical outcome, and a range of biological parameters (Jones and Baker, 2014; Mackay et al., 2017; Paugh et al., 2010; Schwartzenuber et al., 2012; Sturm et al., 2012; Wu et al., 2012, 2014). Histone wild-type (WT) tumors have widely differing mutational burdens, ranging from infant cases (<3 years) driven by single gene fusion events through to patients with biallelic mismatch repair deficiency harboring some of the highest mutational rates in human cancer (Jones and Baker, 2014; Mackay et al., 2017; Shlien et al., 2015; Wu et al., 2014).

The rapid advances in our understanding of pHGGs have come predominantly from the accumulation of numerous disparate retrospective collections, a reflection of the rarity of the disease. Clinical trial cohorts with ancillary biomarker analyses have been relatively limited in their scope, and historically have focused on single-marker analyses. These include the Children's Oncology Group ACNS0126 (radiotherapy [RT]/temozolomide [TMZ]) (Cohen et al., 2011) and ACNS0423 (RT/TMZ followed by TMZ and lomustine) (Jakacki et al., 2016) studies, which report on the frequency and clinical correlations of O6-methylguanine-DNA methyltransferase (MGMT) expression (ACNS0126) (Jakacki et al., 2016; Pollack et al., 2006), *IDH1* mutation (ACNS0423) (Pollack et al., 2011), as well as phosphorylated Akt expression (Pollack et al., 2010a) and microsatellite instability (both) (Pollack et al., 2010b). The CCG-945 study ("8 in 1" chemotherapy) (Finlay et al., 1995) reported on the prognostic significance of p53 expression/mutation (Pollack et al., 2002), in addition to the presence/absence of 1p19q co-deletion (Pollack et al., 2003b).

This last study (Pollack et al., 2003b) also highlighted the critical importance of pathological review in the diagnosis of pHGG, and subsequent interpretation of clinical trial results (Gilles et al., 2008; Pollack et al., 2003a), particularly in midline locations (Eisenstat et al., 2015). It has subsequently become clear that numerous histological subtypes of HGG can harbor distinct genetic drivers and have considerably better clinical outcomes, such as *BRAF_V600E* mutations in epithelioid glioblastoma

(GBM), anaplastic ganglioglioma, and anaplastic pleomorphic xanthoastrocytoma (PXA) (Hatae et al., 2016); in the latter two categories, this mutation is also found in lower-grade entities lacking obvious anaplasia. Additional histone WT cases of otherwise uncontroversial HGGs have been found to be biologically and clinically more similar to several types of low-grade glioma (LGG) and PXA (Korshunov et al., 2015), highlighting the importance of an integrated diagnosis combining molecular and histological features.

The HERBY trial (study BO25041; [clinicaltrials.gov](https://clinicaltrials.gov/ct2/show/study/NCT01390948) NCT01390948) was a phase II, open-label, randomized, multi-center, comparator study of the addition of the anti-angiogenic agent bevacizumab (BEV) to RT and TMZ in patients between the ages of 3 and 18 years with newly diagnosed non-brainstem HGG (Grill et al., 2018). Central confirmation of HGG diagnosis was mandatory before randomization, followed by consensus review by five independent expert neuropathologists. Real-time panel radiological assessment was also incorporated. An exploratory endpoint of the study was to establish a biospecimen repository for correlative molecular profiling. In addition to its role in tumor angiogenesis, vascular endothelial growth factor (VEGF) restricts immune cell activity, and BEV has been demonstrated to facilitate recruitment of T cells to infiltrate tumors (Wallin et al., 2016), as well as increase the ratio of CD8⁺CD3⁺ T cells in adult GBM specimens (Scholz et al., 2016). We therefore also sought to explore the immune profile of cases within the HERBY cohort.

RESULTS

The Translational Research Cohort Is Representative of the Whole Clinical Trial Population

The total HERBY cohort comprised 121 randomized patients at diagnosis (3–18 years) plus 3 infant cases (<3 years) at relapse. Of these, 113 patients consented to the translational research program (Table S1). Tumor tissue was collected from either

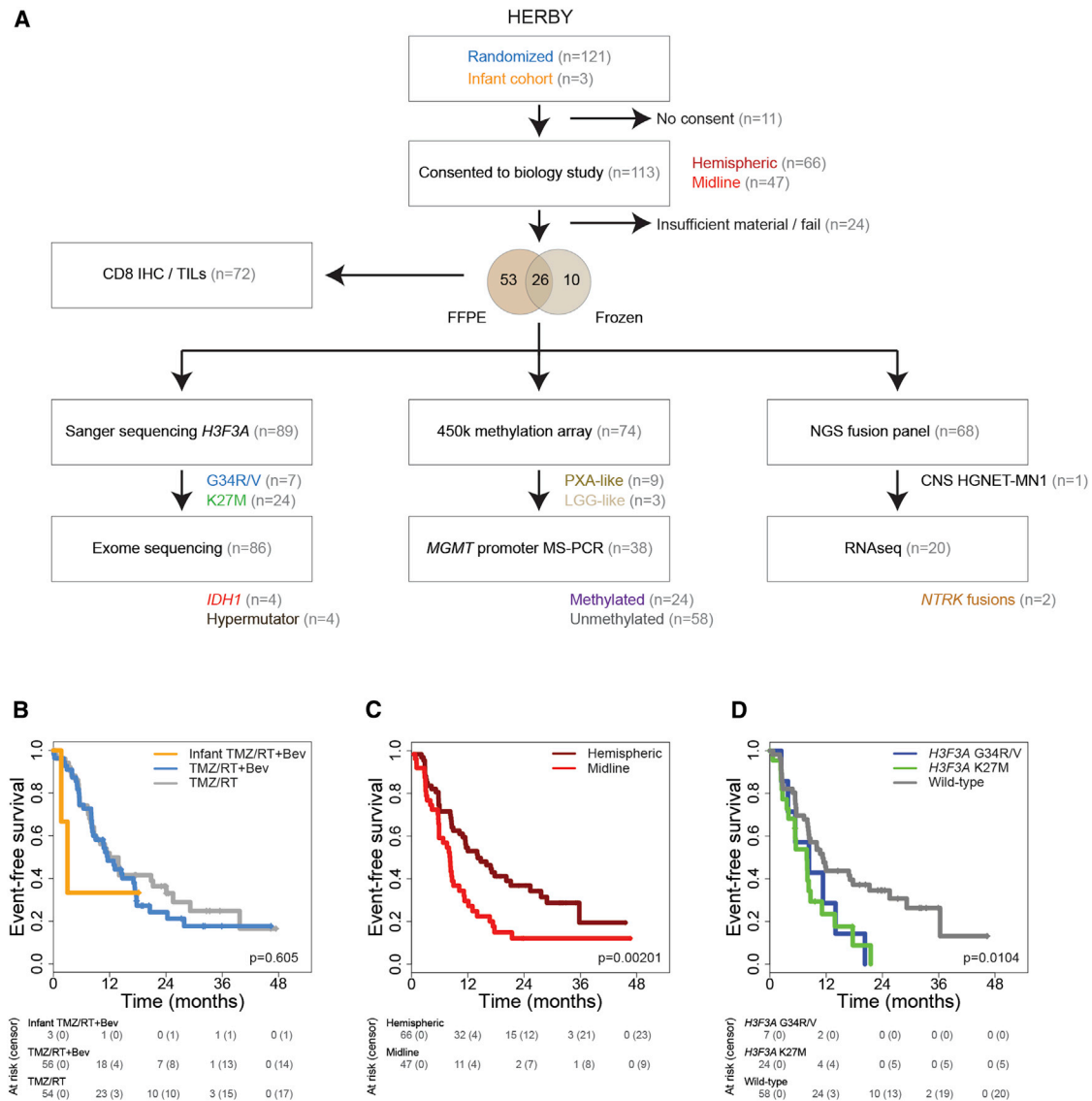


Figure 1. Sample Cohort

(A) Flow diagram indicating total HERBY trial cohort ($n = 121$ randomized plus 3 infants), those patients consenting to the biology study ($n = 113$) for whom sufficient formalin-fixed paraffin-embedded (FFPE) or frozen tumor was available ($n = 89$), and the respective molecular analyses undertaken.

(B–D) Kaplan-Meier plots of event-free survival of cases (y axis) separated by treatment arm (B), anatomical location (C), or *H3F3A* status (D), with time given in months (x axis) and the overall p value provided, calculated by the log rank test. Individual pairwise comparisons are provided in the text.

See also [Table S1](#).

resection ($n = 93$) or biopsy ($n = 20$), although 24 cases failed to provide sufficient quantity or quality of sample for molecular analysis. For the remaining 89 cases, material was available in the form of either fresh-frozen material ($n = 36$), formalin-fixed paraffin-embedded pathology specimens ($n = 79$), or both ($n = 26$). These were subjected to Sanger sequencing for *H3F3A* ($n = 89$), exome sequencing ($n = 86$), Illumina 450k methylation BeadChip profiling ($n = 74$), CD8 immunohistochemistry ($n = 70$), methylation-specific PCR for *MGMT* promoter methylation ($n = 36$), a capture-based sequencing panel for common fusion gene detection ($n = 68$), and RNA sequencing (RNA-seq) ($n = 20$) (Figure 1A).

The translational research cohort, representing a subset (91%) of the randomized trial, displayed equivalent clinical characteristics to the full dataset (Grill et al., 2018), with no difference in the primary endpoint of 1-year event-free survival (EFS) with the addition of BEV to the standard therapy of TMZ and RT (median 12.0 versus 8.3 months, $p = 0.372$, log rank test), with an additional small ($n = 3$) infant cohort treated with BEV at relapse (Figure 1B). The cohort contained 66 (58%) hemispheric and 47 (42%) non-brainstem midline tumors, with the latter location conferring a significantly shorter EFS (median 8.0 versus 14.7 months, $p = 0.00201$, log rank test) (Figure 1C). Histone mutation status was a significant predictor of worse prognosis

compared with WT (median EFS = 11.3 months) for *H3F3A_K27M* (24/89, 27%; median EFS = 7.9 months; $p = 0.0063$, log rank test) and also trended toward shorter survival for *H3F3A_G34R/V* (7/89, 8%; median EFS = 8.3 months; $p = 0.096$, log rank test) (Figure 1D).

Integrated Molecular Analysis Defines the Major (Epi)genomic Alterations in pHGG

We used the Heidelberg brain tumor classifier on Illumina 450k methylation array data to assign a molecular subgroup to each of 74 samples for which such data were available (Table S2). After excluding low-scoring assignments (<0.2), we used a simplified system to classify tumors as either H3K27M ($n = 18$), H3G34R/V ($n = 6$), or IDH1 ($n = 4$) (integrating gene mutation data in low-scoring cases); as resembling PXA-like ($n = 9$) or other LGG-like ($n = 3$); and aggregating the remaining tumors (HGG-WT, $n = 34$) (Figure 2A). IDH1 tumors represented the oldest patients (median = 17.2 years, others = 11.2, $p = 0.0107$, t test), with LGG-like representing the youngest category (median = 5.7 years, $p = 0.0098$, t test) (Figure 2B). These two subgroups each had significantly better outcome in terms of EFS ($p = 0.0281$ and $p = 0.0386$, log rank test), although not OS ($p = 0.0935$ and $p = 0.129$, log rank test) (Figure 2C), when compared individually to the remaining tumors. The PXA-like showed a trend toward longer OS ($p = 0.0867$, log rank test) compared with the rest. When IDH1, PXA-like, and LGG-like tumors were excluded from the analysis, the significant differences between histone mutant and HGG-WT groups were absent (H3K27M, $p = 0.257$ EFS and $p = 0.0746$ OS; H3G34R/V, $p = 0.552$ EFS and $p = 0.116$ OS, log rank test). Twelve out of 78 (15%) samples harbored a methylated *MGMT* promoter, although this was largely restricted to the H3G34R/V ($n = 3$, $p = 0.0249$, Fisher's exact test) and IDH1 ($n = 3$, $p = 0.0062$, Fisher's exact test) subgroups (Figure S1A), and was not significantly associated with survival (Figure S1B) in these uniformly TMZ-treated patients.

We used a 450k methylation array and exome-sequencing coverage to derive DNA copy-number profiles for 86 pHGG (Figure S2A), including focal amplifications/deletions, as well as whole-arm chromosomal gains/losses (Table S3). Taken with the somatic single-nucleotide variants (SNVs) and small insertion/deletions from whole-exome sequencing (Table S3), and candidate gene fusion events from capture-based panel sequencing ($n = 68$) and RNA-seq ($n = 20$) (Table S3), we derived an integrated map of genetic alterations across the translational research cohort (Figure 3A). The most common alteration was *TP53* mutation (39/82, 48%), followed by *ATRX* deletion/mutation (25/82, 30%), *PDGFRA* amplification/mutation (17/82, 21%), and *CDKN2A/B* deletion (15/82, 18%). Additional recurrent alterations in receptor tyrosine kinases (*EGFR*, *MET*, *ERBB3*, *IGF1R*, and *NTRK2*), phosphatidylinositol 3-kinase (PI3K)/mammalian target of rapamycin (*PTEN*, *PIK3CA*, *TSC2*, and *PIK3R1*), and MAP-kinase (*NF1*, *BRAF*, *PTPN11*, and *PTPN12*) pathways were common, as were amplifications/mutations in various genes associated with cell-cycle regulation (*RB1*, *CDK4*, *MDM2*, and *CCND2*). Taking a minimum variant allele frequency of 5% as a threshold, the median number of somatic mutations per sample was 15 (range = 0–337) (Figure 3B), with the exception of

four cases for whom there were more than 100-fold more, and were excluded from gene-level counts.

pHGGs Comprise a Diverse Set of Biological and Clinicopathological Subgroups

Two cases were highlighted from the methylation subgrouping as potentially representing non-HGG entities. One case classifying as CNS neuroblastoma with *FOXR2* activation (CNS NB-*FOXR2*, methylation classifier score = 0.617), was found to have no evidence of *FOXR2* alterations. A further case, a compact and necrotic tumor with perivascular radiating arrangements (Figure S2B), displayed a methylation classifier score strongly indicative of a high-grade neuroepithelial tumor with *MN1* alteration (CNS HGNET-MN1, methylation classifier score = 0.713) (Figure S2C). We identified a candidate alteration in this case fusing exon 1 of *MN1* (22q12.1) to exon 3 of *CARD6* (5p13.1) (Figure S2D), and thus appears most likely to fall into this categorization.

Three cases classified more closely to either pilocytic astrocytoma ($n = 2$) or desmoplastic infantile ganglioglioma (DIG) ($n = 1$) by 450k methylation profiling. The first two harbored mitogen-activated protein kinase (MAPK) dysregulation in the form of either *BRAF_V600E* or intragenic *FGFR1* duplication (Figure S2E). Histologically, after Pathology Committee review, no piloid features were seen, and anaplastic features were evident (Figure S2F). The DIG-like case was found in the infant cohort (2.7 years). None of these three patients died during the course of follow-up, and, although numbers are small, were all found in the right frontal and temporo-parietal lobes with central predominance (Figure S2G).

There were four cases with *IDH1* hotspot mutations (Figure S3A). Three were classified as WHO-grade III anaplastic astrocytoma (AA), *IDH1_R132*-positive by immunohistochemistry, with concurrent *TP53* and *ATRX* mutations. The remaining case was originally classified as a mixed oligo-astrocytoma, which, by virtue of the presence of *IDH1_R132* and *TERT* promoter mutation (C228T), as well as copy-number loss of chromosomes 1p and 19q, would be described as an oligodendroglioma according to WHO 2016 (Figure S3B). Across the whole cohort, *IDH1* mutation conferred a significantly longer EFS ($p = 0.0398$, log rank test), although not OS ($p = 0.110$, log rank test) (Figure S3C), and were restricted to the frontal lobes (Figure S3D).

After excluding *IDH1* mutant cases, the remaining *H3F3A* and *BRAF* WT cases ($n = 38$) represented a heterogeneous mix of genomic profiles, with recurrent deletions/mutations in the common pHGG tumor suppressor genes *TP53* ($n = 11$), *ATRX* ($n = 5$), *CDKN2A/B* ($n = 7$), *NF1* ($n = 8$), *RB1* ($n = 7$), and *PTEN* ($n = 5$), but also with an enrichment of gene amplifications in *PDGFRA* ($n = 5$, with *KIT* and *KDR*, $n = 4$), *CDK4* ($n = 7$, with *MDM2*, $n = 4$), *EGFR* ($n = 4$), *MET* ($n = 2$), *CCND2* ($n = 3$), and *MYCN* ($n = 3$) (Figure S3E). The most common methylation subclass in these cases was designated GBM_RTK_MYCN ($n = 6$); however, it included only one of those with *MYCN* amplification, and with no other common amplifications or mutations. Seven cases harbored none of the recurrently altered genes previously described in pHGG, and clearly represent a subgroup that warrants further investigation. Together, these cases had bilateral hemispheric distribution with predominant deep right cerebral localization (Figure S3F).

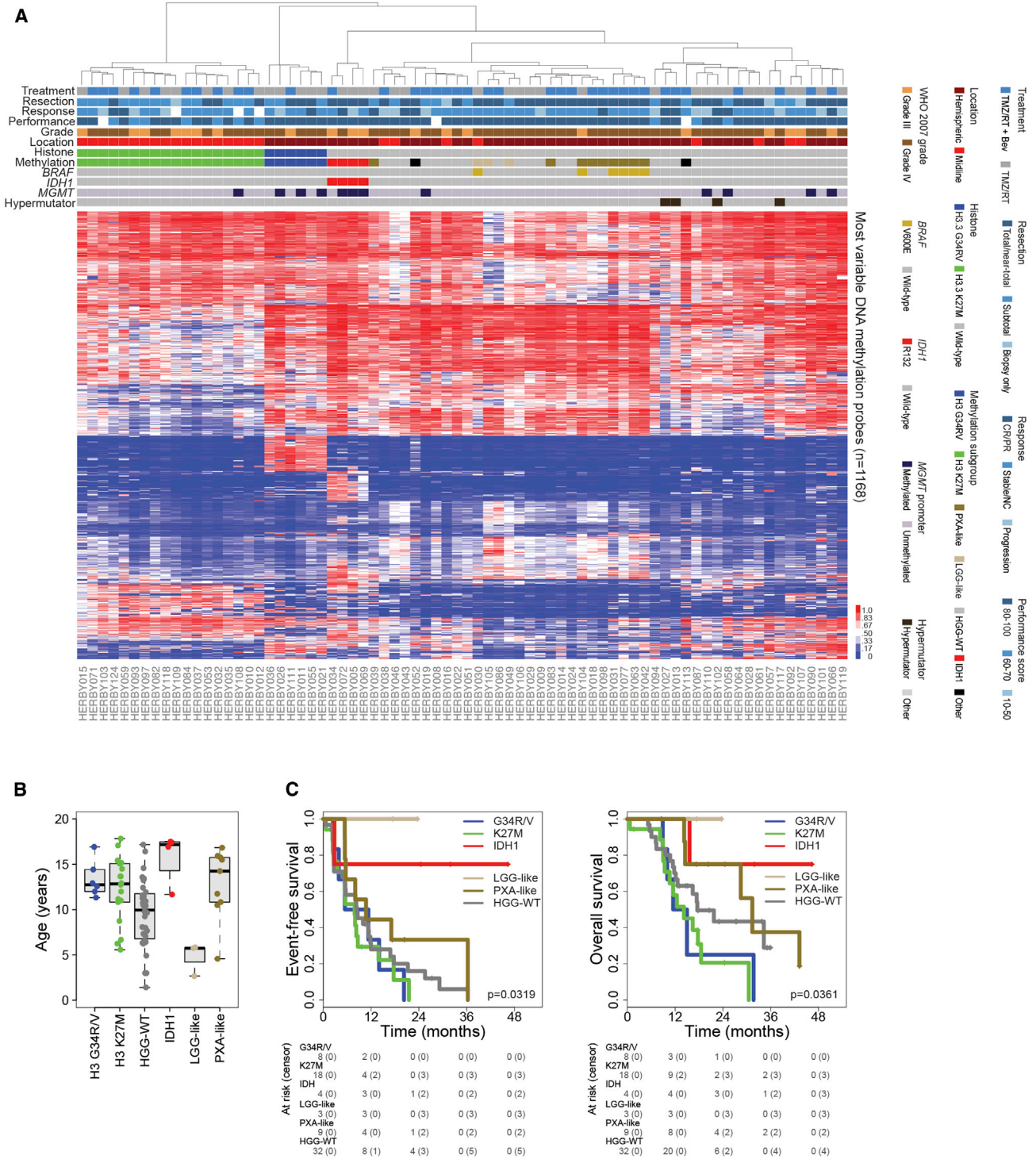


Figure 2. Methylation-Based Subclassification

(A) Heatmap representation of β values for 74 samples profiled on the Illumina 450k BeadChip platform (red, high; blue, low). Samples are arranged in columns clustered by probes with the largest median absolute deviation across the 10k predictor subset of probes. Clinicopathological and molecular annotations are provided as bars according to the included key. CR/PR, complete response or partial response; Stable/NC, stable disease or no change.

(B) Boxplot showing age at diagnosis of included cases, separated by methylation subclass. The thick line within the box is the median, the lower and upper limits of the boxes represent the first and third quartiles, and the whiskers 1.5 \times the interquartile range.

(C) Kaplan-Meier plot of event-free and overall survival of cases (y axis) separated by methylation subclass, time given in months (x axis) and overall p value calculated by the log rank test.

See also [Figure S1](#) and [Table S2](#).

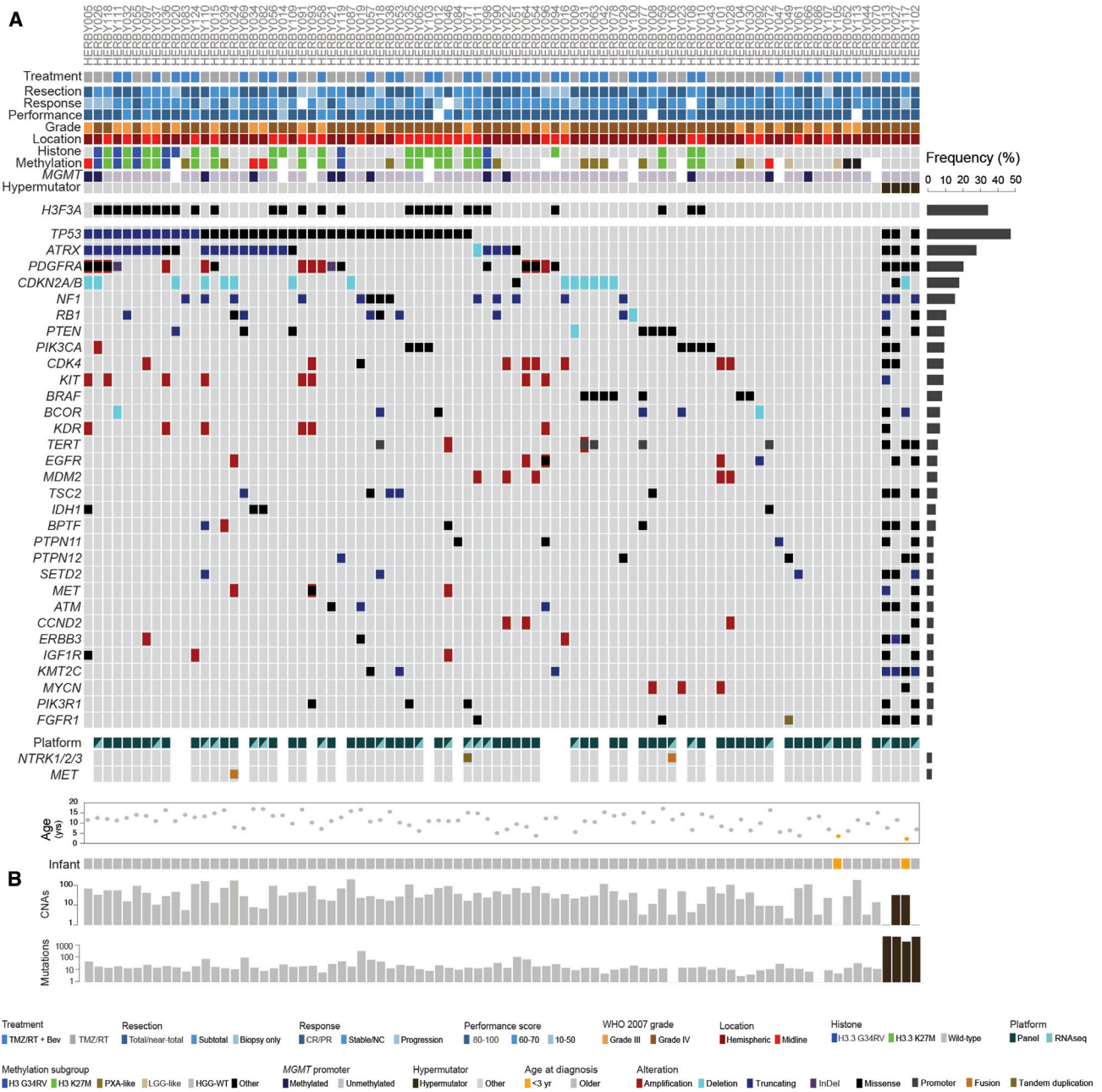


Figure 3. Somatic Mutations

(A) Oncoprint representation of an integrated annotation of somatic mutations and DNA copy-number changes for the 30 most frequently altered genes in 86 samples ($n \geq 3$, frequency barplot on the right, excluding hypermutator cases). Selected common fusion events are also shown where available. Samples are arranged in columns with genes labeled along rows.

(B) Barplots are provided on a \log_{10} scale for numbers of copy-number aberrations and somatic mutations per case. Clinicopathological and molecular annotations are provided as bars according to the included key. CR/PR, complete response or partial response; Stable/NC, stable disease or no change. See also Figures S2 and S3 and Table S3.

H3F3A Mutation Confers Poor Prognosis for Both K27M and G34R/V Substitutions

Histone mutations have been shown to be present in approximately half of all pHGGs (Mackay et al., 2017), with a clear negative impact on survival for K27M (Karremann et al., 2018; Khuong-Quang et al., 2012; Mackay et al., 2017), although the

situation is less clear for G34R/V mutations (Bjerke et al., 2013; Korshunov et al., 2015; Mackay et al., 2017). H3F3A_G34R/V mutant tumors had a tendency to being diffusely infiltrative with predominant deep left temporo-parietal involvement (Figure 4A). There were seven cases with H3F3A_G34 substitutions (six G34R and one G34V), with six

out of seven (86%) cases additionally harboring *TP53* and/or *ATRX* mutations (five out of seven, 71% both), while five out of seven (71%) also contained *PDGFRA* amplification and/or mutation (Figure 4B). There were no other recurrent mutations, although isolated instances of mutations in PI3K signaling (*PIK3CA* and *PTEN*) and DNA repair (*ERCC1*) were observed (Table S3). Histologically, there were four GBM, two AA with multinucleated cells, and one HGG, not otherwise specified (Figure 4C). Tumors were Olig2 negative (7/7) with strong nuclear accumulation of p53 (6/7). Across all tumors within this hemispheric subgroup, patients harboring these mutations trended toward a shorter EFS (median = 8.3 months; $p = 0.0572$, log rank test) and had a significantly shorter OS (median = 12.0 months; $p = 0.00765$, log rank test) (Figure 4D), although this association was lost when IDH1, PXA-like, and LGG-like tumors were excluded ($p = 0.440$ EFS and $p = 0.139$ OS, log rank test) (Figure S4A).

By contrast, K27M substitutions were restricted to midline regions ($n = 24$). Two patients had distinct, separate lesions in the thalamus and hypothalamus, while the remaining had central thalamic, midbrain, or cerebellar localization (Figure 4E). Fifteen out of 21 (71%) exome-sequenced cases carried additional amplifications/mutations in the receptor-tyrosine kinase (RTK)-PI3K pathway across a range of genes (*PDGFRA*, *MET*, *IGF1R*, *FGFR1*, *PTEN*, *PIK3CA*, and *PIK3R1*), with five out of six of the remaining tumors harboring *ATRX* mutation (Figure 4F; Table S3). There was strong immunoreactivity for H3K27M in 12/12 cases tested (Figure 4G). Although conferring a worse prognosis across the whole cohort (above), within midline locations there was no association with either EFS (median = 7.9 months; $p = 0.482$, log rank test) or OS (median = 14.2 months; $p = 0.839$, log rank test) (Figure 4H), nor any prognostic value for WHO-grade in K27M tumors ($p = 0.646$ EFS and $p = 0.762$ OS, log rank test) (Figure S4B).

Immune-Positive Subgroups Are Associated with MAPK and Benefit from the Addition of BEV

pHGGs with a high mutational burden had previously been described to have an elevated neoantigen load and a pronounced immune response (Bouffet et al., 2016). Four cases were classed as hypermutator, with a median somatic mutation count of 4,848 (range = 2,197–5,332; mutation rate 160–240 mutations/Mb) (Figure 5A, Table S1). Mutation signature analysis showed predominantly C > T transitions and hotspot somatic *POLE* mutations in three cases, and a somatic *POLD1* mutation in the fourth (Figure 5B). They were all categorized as GBM, and, in one case, the presumed mismatch repair deficiency was demonstrated by clear loss of MLH1 expression by immunohistochemistry (Figure 5C). This specimen had a heterogeneous immune phenotype, with a relatively high percentage of CD8⁺ cells in the central area, and in three or four thin perivascular cuffs (Figure 5D; Table S4). These hypermutator cases had the highest percentage of CD8⁺ cells ($p < 0.0001$ t test versus rest

excluding PXA-like) (Figure 5E). Notably, PXA-like tumors were also significantly enriched for CD8⁺ cells ($p < 0.0001$ t test versus rest excluding hypermutator). Of three HGG-WT cases with relatively high immune infiltrate, two had elevated somatic SNV counts (100–110 per case), while the third scored highly for the GBM_LYMPH_HI subgroup by methylation profiling. A formal histological assessment of tumor-infiltrating lymphocytes (TILs) confirmed the highest-scoring categories (lymphocytes scattered among tumor cells/in more than 50% of the tumor) to be almost exclusively present in hypermutator and PXA-like subgroups (Figure S5A; Table S4), as were those cases formally classified as an inflamed immune phenotype (Figure S5B; Table S4). Histone mutant tumors were notably immune cold as defined by a lack of CD8 immunoreactivity and an absence of TILs.

Nine cases classified by 450k methylation profiling as more similar to PXAs than HGGs. Five out of nine (55%) harbored *BRAF_V600E* mutations, with three out of five (60%) also containing *CDKN2A/B* deletions and/or *TERT* amplification or promoter mutation (C250T) (Figure 6A). Three of four of the remaining cases were instead found with somatic *NF1* mutation, often in concert with *TP53* (three out of four) and/or *ATRX* mutation (two out of four). Upon histological re-review according to WHO 2016 guidelines by the HERBY Pathology Committee, *BRAF_V600E* cases were all found to comprise the epithelioid variant of grade IV GBM, while the *NF1* cases were all classified as the giant cell variant (Figure 6B). PXA-like tumors had a high degree of immune infiltrate, with cases exhibiting several perivascular cuffs of more than three layers of CD8⁺ T cells, which were also scattered among tumor cells in more than 50% of the specimen (Figure 6C). They were found bilaterally restricted to temporo-parietal regions with a medial hemispheric predominance (Figure 6D).

Gene expression data from RNA-seq were available for a subset of samples, in which a CD8 T effector/T cell signature was found to correlate with CD8 positivity by immunohistochemistry ($r^2 = 0.49138$, $p = 0.00523$), with two hypermutator cases as outliers (Figure 7A). Although no PXA-like or *BRAF_V600E* mutant cases were included in this subset, these signatures were particularly evident in cases with predicted MAPK pathway-activating alterations in *NF1* (truncating frameshift/nonsense, disrupting translocation or predicted damaging missense), *NTRK2* (translocation or tandem duplication of kinase domains), and *FGFR1* (known activating hotspot mutation) (Figure 7B). Gene set enrichment analysis (GSEA) showed multiple enrichments for gene sets associated with T cell signaling and the immune response (e.g., *PID_CD8_TCR_DOWNSTREAM_PATHWAY*, enrichment score = 0.594, nominal $p = 0.0020$; *KEGG_T_CELL_RECEPTOR_SIGNALING_PATHWAY*, enrichment score = 0.532, nominal $p = 0.0297$) and inflammatory-related MAPK signaling (e.g., *ST_JNK_MAPK_PATHWAY*, enrichment score = 0.466, nominal $p = 0.0332$; *REACTOME_GRB2_SOS_PROVIDES_LINKAGE_TO_MAPK_SIGNALING_FOR_INTERGRINS*,

(E–H) *H3F3A_K27M*. (E) Radiological tumor lesion map of 21 *H3F3A_K27M* cases. Brighter colored pixels indicate a higher probability of tumor incidence. (F) Integrated data from *H3F3A_K27M* cases. Clinicopathological and molecular annotations are provided as bars according to the included key in Figure 3. (G) H&E (top) and immunohistochemistry (bottom) directed against H3.3K27M for HERBY015. Scale bars 50 μm . (H) Kaplan-Meier plot of event-free and overall survival of 34 midline cases (y axis) separated by *H3F3A* status, time given in months (x axis), p value calculated by the log rank test. See also Figure S4.

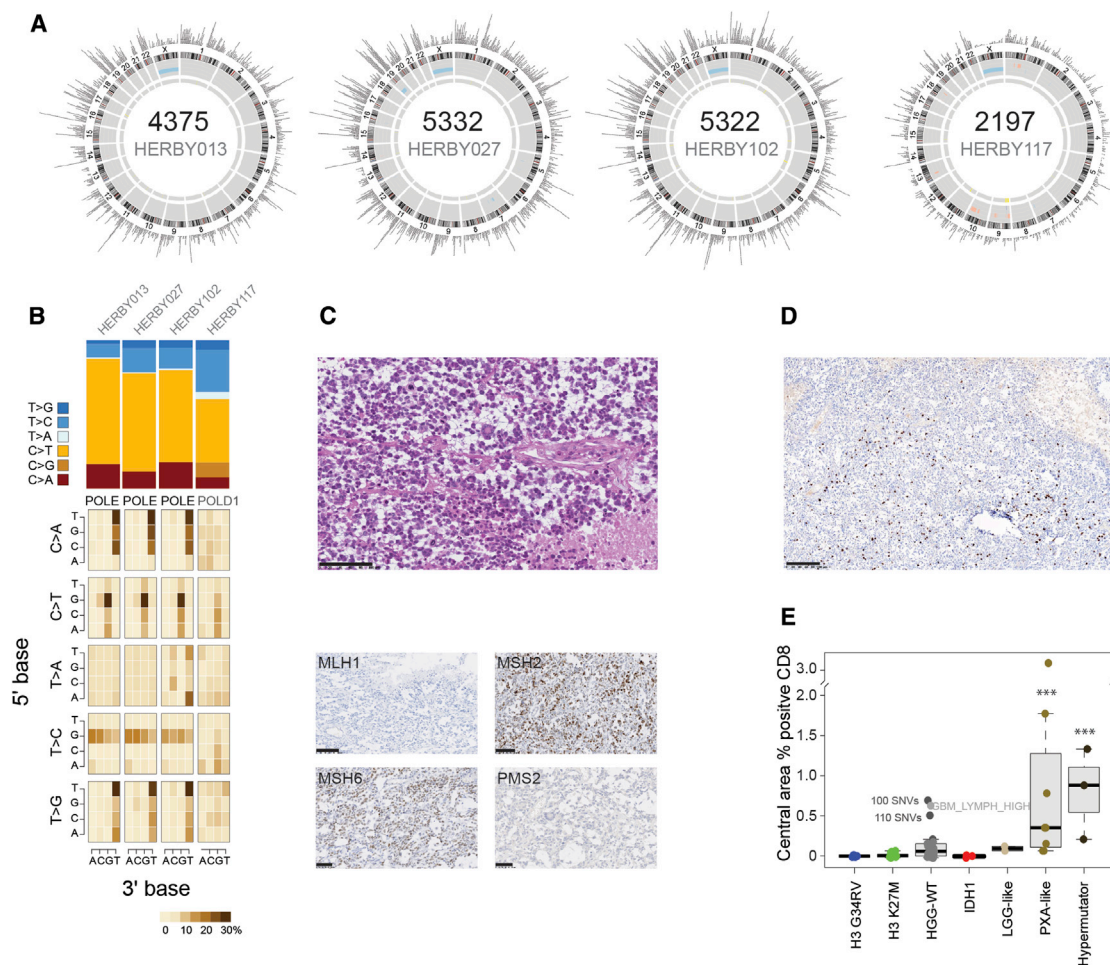


Figure 5. Hypermutator Cases

(A) Circos plots for four hypermutator cases. In each case, plots provide somatic SNVs and insertion/deletions on the outer ring, DNA copy-number changes (dark red, amplification; red, gain; dark blue, deletion; blue, loss), and loss of heterozygosity (yellow) on the inner rings, and intra- (orange) and inter- (blue) chromosomal translocations inside the circle.

(B) Mutation signatures. Top: simple stacked barplot representation of the proportion of mutation types observed in individual hypermutator cases and the remaining accumulated dataset. Base changes given in the key. Bottom: mutation context given for each of the 96 mutated trinucleotides, represented by heatmap. The base located 5' to each mutated base is shown on the vertical axis, and the 3' base is on the horizontal axis.

(C) H&E (top) and protein expression of mismatch repair proteins (bottom panel, clockwise from top left: MLH1, MSH2, MSH6, and PMS2) as assessed by immunohistochemistry in a glioblastoma with 5,322 somatic mutations (HERBY102). Scale bars, 100 μm (H&E, MLH1, MSH2) or 50 μm (MSH6, PMS2).

(D) CD8 expression in T cells by immunohistochemistry in HERBY102. Scale bar, 100 μm .

(E) Boxplot of percentage of CD8⁺ cells in the central tumor region separated by subgroup. The thick line within the box is the median, the lower and upper limits of the boxes represent the first and third quartiles, and the whiskers 1.5 \times the interquartile range. *** $p < 0.0001$, t test.

See also [Figure S5](#) and [Table S4](#).

enrichment score = 0.581, nominal $p = 0.0239$ ([Table S5](#)), with mean T effector/T cell signature significantly higher than in cases without MAPK alterations ($p = 0.0039$, t test) ([Figure 7C](#)). This was validated in a restricted cohort of $n = 59$ patients from our retrospective analysis designed to approximate the HERBY cohort (i.e., non-brainstem pHGGs aged 3–18 years), in which we observed a significantly elevated T effector/T cell gene expression signature in MAPK-altered samples ($p = 0.0018$, t test) ([Figures S6A](#) and [S6B](#)), further demonstrated by GSEA (e.g., PID_CD8_TCR_DOWNSTREAM_PATHWAY, enrichment score = 0.551, nominal $p = 0.0099$; BIOCARTA_TCR_PATHWAY enrichment score = 0.520, nominal $p = 0.0305$) ([Table S5](#)).

We also explored other immune-related gene expression signatures in the RNA-seq data, and noted a trend toward an elevated macrophage M2 response in MAPK-altered tumors ($p = 0.0810$, t test) ([Figures S6C](#) and [S6D](#)). We performed CD68 staining for a limited number of cases with a histologically defined immune response ($n = 11$), and found a heterogeneously distributed tumor-associated macrophages (TAM) component, comprising either TAM-free tumoral areas, or rich TAM areas especially around necrotic foci or associated with perivascular lymphocytes ([Figure S6E](#)). BRAF_V600E cases had CD68⁺ TAM more diffusely intermingled with tumor cells ([Figure S6E](#)). Although the presence of macrophage infiltration has previously

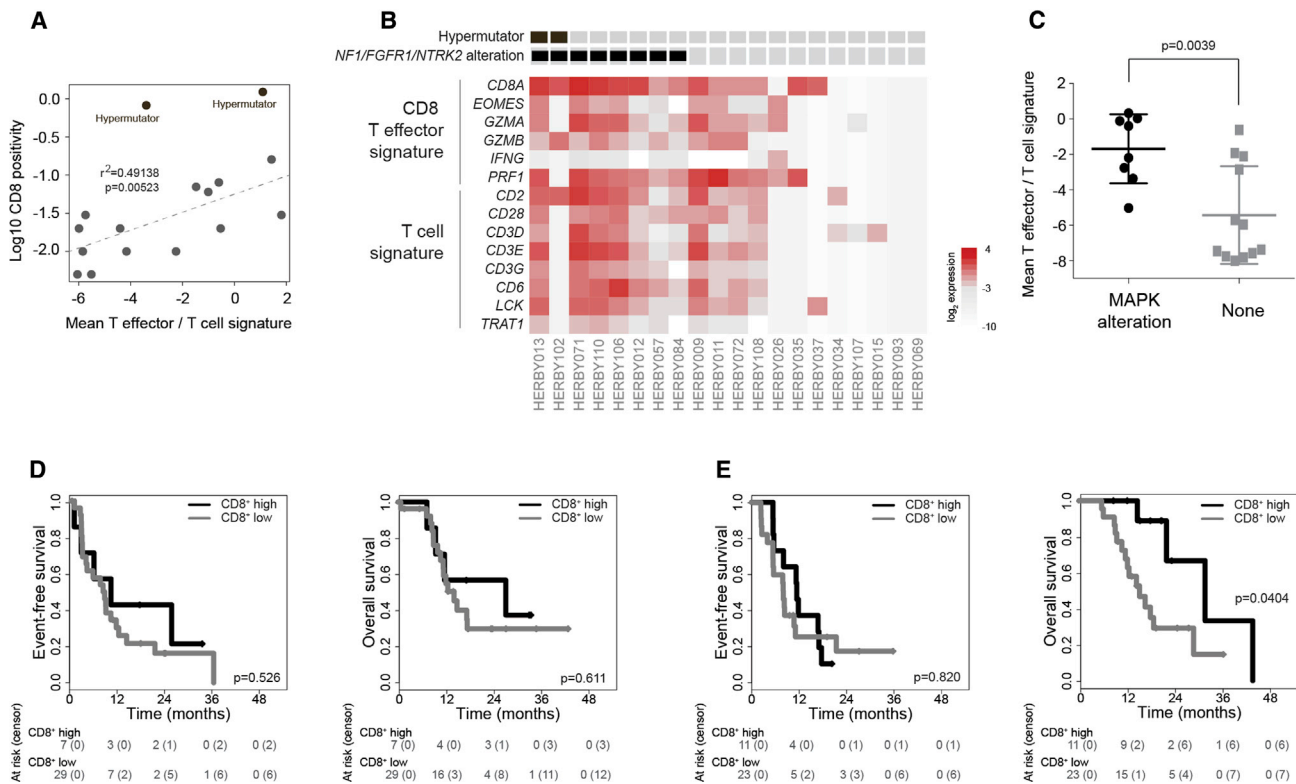


Figure 7. Immune Signatures and Response to BEV

(A) Mean T effector/T cell gene expression values (plotted as \log_2 , x axis) were correlated with CD8 immunoreactivity (plotted as \log_{10} , y axis) for 18 cases. Two cases were scored as 0% by immunohistochemistry and were not plotted (expression values -7.37 and -7.58).

(B) Gene expression signatures for CD8 T effector and T cells plotted as a heatmap from 20 cases with RNA-seq data. Hypermutator cases and those with MAPK alterations including *NF1*, *FGFR1*, or *NTRK2* are annotated.

(C) Plot of T effector/T cell gene expression values in MAPK-altered samples compared with those without. Horizontal bar represents the mean, error bars the SD.

(D) Kaplan-Meier plot of event-free and overall survival of 36 cases (y axis) treated with TMZ/RT, separated by levels of CD8⁺ T cells, time given in months (x axis), and p value calculated by the log rank test.

(E) Kaplan-Meier plot of event-free and overall survival of 34 cases (y axis) treated with TMZ/RT plus BEV, separated by levels of CD8⁺ T cells, time given in months (x axis), and p value calculated by the log rank test.

See also [Figures S6](#) and [S7](#) and [Table S5](#).

survival (D'Souza et al., 2008), selective BRAF inhibitors have been shown to increase CD8⁺ lymphocytes in human metastatic melanoma models (Wilmott et al., 2012). Crucially, although MEK inhibition has been demonstrated to block naive CD8⁺ T cell priming in a colon cancer model, the number of CD8⁺ effector T cells within the tumor were increased, and could potentiate immune checkpoint therapy (Ebert et al., 2016). A limitation of the present study is the small numbers in this *post-hoc* analysis, and the benefit that patients with these biological subgroups may derive from an immunomodulatory mechanism of BEV would need to be tested in the prospective setting. This is a challenge given that these patients represent approximately 10%–15% of an already rare disease; however, international collaborative trials groups (such as those in HERBY represent), already recruit hypermutator and MAPK-altered HGGs in this population for appropriately targeted therapies (NCT02992964, NCT02684058). Equally importantly, the histone H3 mutant subgroups, which represent a substantial proportion of patients in this age group (Mackay et al., 2017) were found to be very poorly immunogenic, confirming a previous study in resectable malig-

nant brainstem gliomas in children and adults with K27M mutations (Zhang et al., 2017), and further negating the likelihood of clinical response to such therapies.

A key observation is the high prevalence of tumors occurring outside the cerebral hemispheres harboring histone mutations, included in the most recent 2016 WHO classification system as a separate entity called diffuse midline glioma with H3K27M mutation. These represented 27% of the assessed population, and had a particularly poor outcome, as did histone WT midline cases. These tumors only rarely have *MGMT* promoter methylation, and have consistently proved refractory to TMZ and other chemotherapeutic agents (Jones et al., 2016). Critically, midline K27M tumors classified histologically as either grade 3 or 4 according to the WHO 2007 classification had no difference in clinical outcome within the HERBY cohort, and with the caveat of small numbers, support the current 2016 guidelines to assign all such tumors as grade 4 on the basis of their location and molecular findings.

More surprising was the poor outcome observed for patients with *H3F3A_G34R/V* mutations. A previous study reported G34R mutations to convey a better prognosis in respect of OS

(HR = 0.49, $p = 0.01$), although this was not significant in multivariate analysis ($p = 0.84$) (Korshunov et al., 2015), although the present study explores this in a consistently treated and well-annotated clinical trial setting. In the HERBY study, as well as in published work (Korshunov et al., 2015; Mackay et al., 2017), the *H3F3A_G34R/V* mutation is associated with a high frequency of *MGMT* methylation. Notably, *MGMT* promoter methylation itself was not predictive in this trial cohort of all patients receiving radiochemotherapy with TMZ, again demonstrating differences with the adult disease, and questioning the continued use of protocols extrapolated from the adult setting. It is clear that histone mutations represent clearly defined entities within an umbrella HGG classification in the pediatric setting, and given their profound impact on chromatin modifications, will require therapeutic development and clinical trials distinct from histone WT cases.

Within the remaining cases of pHGG were a small proportion whose methylation profiles were more similar to other lesions. The LGG-like cases were in young patients with longer EFS, while two additional cases had methylation classifier scores strongly suggestive of recently described entities coming from the study of tumors formally diagnosed as CNS primitive neuroectodermal tumors (Sturm et al., 2016). Integration with histological features and determination of the presence of marker gene fusions events for these entities (CNS HGNET-MN1, CNS NB-FOXR2) will be key in future studies.

Although there have been several early-phase and anecdotal studies of BEV in pHGG (Benesch et al., 2008; Friedman et al., 2013; Gururangan et al., 2010; Narayana et al., 2010; Salloum et al., 2015), none have included biological information on the patients treated. Aside from CD8 immunoreactivity, we did not identify any additional molecular markers of response. In similarly designed adult studies of BEV, gene expression-defined proneural (Sandmann et al., 2015) or mesenchymal (Sulman et al., 2013) subgroups of GBM have been reported to confer a significant OS advantage. Although we have not undertaken gene expression studies across our cohort, adult and pediatric cases expressing proneural genes appear to have distinct genetic and epigenetic drivers (Sturm et al., 2012), the mesenchymal subclass is rare in children (Sturm et al., 2012), and unlike the adult studies, we observed no EFS advantage of BEV in HERBY (Grill et al., 2018).

In conclusion, integrated molecular profiling of the HERBY sample cohort has demonstrated the biological and clinicopathological diversity of the term HGG in the pediatric setting, suspected but not confirmed at the onset of the trial. While there are several distinct subgroups for which there is strong rationale for bespoke future clinical studies, a large proportion of pHGG cases continue to defy improvements in survival and lack a clear path forward. Although BEV was not associated with better outcome in this trial, the extensive biological, pathological, and radiological ancillary research programs ongoing within HERBY aim to provide an integrated assessment of disease pathogenesis and treatment response.

STAR★METHODS

Detailed methods are provided in the online version of this paper and include the following:

- KEY RESOURCES TABLE
- CONTACT FOR REAGENT AND RESOURCE SHARING
- EXPERIMENTAL MODEL AND SUBJECT DETAILS
 - Patient Samples
 - Pathological Review
 - Radiological Anatomical Localization
- METHOD DETAILS
 - Nucleic Acid Extraction
 - *H3F3A* Sanger Sequencing
 - Methylation Profiling
 - *MGMT* Promoter Methylation
 - Next-Generation Sequencing
 - Immunohistochemistry
 - Pathological Assessment of Immune Response
- QUANTIFICATION AND STATISTICAL ANALYSIS
 - Sequence Analysis
 - Methylation Profiling
 - RNAseq
 - Tumor Lesion Maps
 - Statistical Analysis
- DATA AND SOFTWARE AVAILABILITY
- ADDITIONAL RESOURCES

SUPPLEMENTAL INFORMATION

Supplemental Information includes seven figures and five tables and can be found with this article online at <https://doi.org/10.1016/j.ccell.2018.04.004>.

ACKNOWLEDGMENTS

The HERBY clinical trial was carried out as a collaboration between the European Innovative Therapies for Children with Cancer (ITCC) consortium, the SIOPE Brain Tumor Group, the Australian Children's Cancer Trials Group (ACCT), and the C-17 Council (Canada). The translational research study was funded by an unrestricted grant from F. Hoffmann-La Roche Ltd allied to the HERBY trial (study number BO25041; clinicaltrials.gov NCT01390948). The funder provided infrastructure for sample acquisition, shipping, storage, and record keeping. The funder had no role in study design, data collection, data analysis, data interpretation, or writing of the report. We acknowledge the excellent technical assistance of staff at the Tumor Profiling Unit at the Institute of Cancer Research, London, UK, Sainte-Anne Hospital, Paris, France, and HistoGeneX, Antwerp, Belgium. A.M., A.B., V.M., E.I.D., and C.J. acknowledge NHS funding to the NIHR Biomedical Research Center at The Royal Marsden and the ICR; T.S.J. acknowledges NHS funding to the NIHR Biomedical Research Center at Great Ormond Street Hospital. M.L.G. recognizes the support from the Associazione per la Ricerca sui Tumori Cerebrali del Bambino. We would like to thank the local investigators, pathologists and radiologists who took part in the HERBY study, and the patients and families who consented to inclusion in the translational research program.

AUTHOR CONTRIBUTIONS

C.J., P.V., J.Grill, T.W., S.M.P., R.T., M.D.T., and G.V. conceived the study. A.M., J.B.-V., and C.J. analyzed data. A.B., V.M., D.T., W.J., D.C., and E.I.D. performed molecular analysis. D.R., P.S.M., and T.J. carried out radiological analysis. F.G., C.H., T.P., T.S.J., D.F.-B., and P.V. carried out histopathological analysis. M.M., M.L.G., and J. Grill provided samples. P.R., A.J.W., and A.R. constructed analytical and visualization tools and databases. H.S. and J. Garcia provided logistical support. A.M. and C.J. wrote the manuscript. All authors approved the manuscript.

DECLARATION OF INTERESTS

C.J. received a research grant from F. Hoffmann-La Roche Ltd. C.J., P.V., M.M., J. Grill, G.V., D.R., P.M., and T.J. received consultancy fees from F.

Hoffmann-La Roche Ltd. F.G., C.H., T.P., T.S.J., D.F.-B., and P.V. received travel reimbursement from F. Hoffmann-La Roche. J.B.-V., H.S., and J. Garcia are employees of F. Hoffmann-La Roche Ltd. R.T. and M.D.T. are employees of Genentech.

Received: January 12, 2018
 Revised: February 28, 2018
 Accepted: April 10, 2018
 Published: May 14, 2018

REFERENCES

- Bautista, F., Paci, A., Minard-Colin, V., Dufour, C., Grill, J., Lacroix, L., Varlet, P., Valteau-Couanet, D., and Georger, B. (2014). Vemurafenib in pediatric patients with BRAFV600E mutated high-grade gliomas. *Pediatr. Blood Cancer* 61, 1101–1103.
- Benesch, M., Windelberg, M., Sauseng, W., Witt, V., Fleischhack, G., Lackner, H., Gadner, H., Bode, U., and Urban, C. (2008). Compassionate use of bevacizumab (Avastin) in children and young adults with refractory or recurrent solid tumors. *Ann. Oncol.* 19, 807–813.
- Bjerke, L., Mackay, A., Nandhabalan, M., Burford, A., Jury, A., Popov, S., Bax, D.A., Carvalho, D., Taylor, K.R., Vinci, M., et al. (2013). Histone H3.3. mutations drive pediatric glioblastoma through upregulation of MYCN. *Cancer Discov.* 3, 512–519.
- Bouffet, E., Larouche, V., Campbell, B.B., Merico, D., de Borja, R., Aronson, M., Durno, C., Krueger, J., Cabric, V., Ramaswamy, V., et al. (2016). Immune checkpoint inhibition for hypermutant glioblastoma multiforme resulting from germline biallelic mismatch repair deficiency. *J. Clin. Oncol.* 34, 2206–2211.
- Brouwer-Visser, J., Cheng, W.Y., Bauer-Mehren, A., Maisel, D., Lechner, K., Andersson, E., Dudley, J.T., and Milletti, F. (2018). Regulatory T-cell genes drive altered immune microenvironment in adult solid cancers and allow for immune contextual patient subtyping. *Cancer Epidemiol. Biomarkers Prev.* 27, 103–112.
- Capper, D., Jones, D.T.W., Sill, M., Hovestadt, V., Schrimpf, D., Sturm, D., Koelsche, C., Sahm, F., Chavez, L., Reuss, D.E., et al. (2018). DNA methylation-based classification of central nervous system tumours. *Nature* 555, 469–474.
- Caretto, V., Sewing, A.C., Lagerweij, T., Schellen, P., Bugiani, M., Jansen, M.H., van Vuurden, D.G., Navis, A.C., Horsman, I., Vandertop, W.P., et al. (2014). Human pontine glioma cells can induce murine tumors. *Acta Neuropathol.* 127, 897–909.
- Cohen, K.J., Pollack, I.F., Zhou, T., Buxton, A., Holmes, E.J., Burger, P.C., Brat, D.J., Rosenblum, M.K., Hamilton, R.L., Lavey, R.S., and Heideman, R.L. (2011). Temozolomide in the treatment of high-grade gliomas in children: a report from the Children's Oncology Group. *Neuro Oncol.* 13, 317–323.
- D'Souza, W.N., Chang, C.F., Fischer, A.M., Li, M., and Hedrick, S.M. (2008). The Erk2 MAPK regulates CD8 T cell proliferation and survival. *J. Immunol.* 181, 7617–7629.
- Ebert, P.J.R., Cheung, J., Yang, Y., McNamara, E., Hong, R., Moskalenko, M., Gould, S.E., Maecker, H., Irving, B.A., Kim, J.M., et al. (2016). MAP kinase inhibition promotes T cell and anti-tumor activity in combination with PD-L1 checkpoint blockade. *Immunity* 44, 609–621.
- Eisenstat, D.D., Pollack, I.F., Demers, A., Sapp, M.V., Lambert, P., Weisfeld-Adams, J.D., Burger, P.C., Gilles, F., Davis, R.L., Packer, R., et al. (2015). Impact of tumor location and pathological discordance on survival of children with midline high-grade gliomas treated on Children's Cancer Group high-grade glioma study CCG-945. *J. Neurooncol.* 121, 573–581.
- Elamin, Y.Y., Rafee, S., Toomey, S., and Hennessy, B.T. (2015). Immune effects of bevacizumab: killing two birds with one stone. *Cancer Microenviron.* 8, 15–21.
- Finlay, J.L., Boyett, J.M., Yates, A.J., Wisoff, J.H., Milstein, J.M., Geyer, J.R., Bertolone, S.J., McGuire, P., Cherlow, J.M., Tefft, M., et al. (1995). Randomized phase III trial in childhood high-grade astrocytoma comparing vincristine, lomustine, and prednisone with the eight-drugs-in-1-day regimen. Children's Cancer Group. *J. Clin. Oncol.* 13, 112–123.
- Fonov, V., Evans, A.C., Botteron, K., Almlí, C.R., McKinstry, R.C., and Collins, D.L.; Brain Development Cooperative Group (2011). Unbiased average age-appropriate atlases for pediatric studies. *Neuroimage* 54, 313–327.
- Friedman, G.K., Spiller, S.E., Harrison, D.K., Fiveash, J.B., and Reddy, A.T. (2013). Treatment of children with glioblastoma with conformal radiation, temozolomide, and bevacizumab as adjuncts to surgical resection. *J. Pediatr. Hematol. Oncol.* 35, e123–126.
- Gabrilovich, D.I., Chen, H.L., Girgis, K.R., Cunningham, H.T., Meny, G.M., Nadaf, S., Kavanaugh, D., and Carbone, D.P. (1996). Production of vascular endothelial growth factor by human tumors inhibits the functional maturation of dendritic cells. *Nat. Med.* 2, 1096–1103.
- Gilles, F.H., Tavares, C.J., Becker, L.E., Burger, P.C., Yates, A.J., Pollack, I.F., and Finlay, J.L. (2008). Pathologist interobserver variability of histologic features in childhood brain tumors: results from the CCG-945 study. *Pediatr. Dev. Pathol.* 11, 108–117.
- Grill, J., Massimino, M., Bouffet, E., Azizi, A.A., McCowage, G., Canete, A., Saran, F., Le Deley, M.C., Varlet, P., Morgan, P.S., et al. (2018). Phase II, open-label, randomized, multicenter trial (HERBY) of bevacizumab in pediatric patients with newly diagnosed high-grade glioma. *J. Clin. Oncol.* 36, 951–958.
- Gururangan, S., Chi, S.N., Young Poussaint, T., Onar-Thomas, A., Gilbertson, R.J., Vajapeyam, S., Friedman, H.S., Packer, R.J., Rood, B.N., Boyett, J.M., and Kun, L.E. (2010). Lack of efficacy of bevacizumab plus irinotecan in children with recurrent malignant glioma and diffuse brainstem glioma: a Pediatric Brain Tumor Consortium study. *J. Clin. Oncol.* 28, 3069–3075.
- Hatae, R., Hata, N., Suzuki, S.O., Yoshimoto, K., Kuga, D., Murata, H., Akagi, Y., Sangatsuda, Y., Iwaki, T., Mizoguchi, M., and Iihara, K. (2016). A comprehensive analysis identifies BRAF hotspot mutations associated with gliomas with peculiar epithelial morphology. *Neuropathology* 37, 191–199.
- Hu-Lieskovan, S., Mok, S., Homet Moreno, B., Tsoi, J., Robert, L., Goedert, L., Pinheiro, E.M., Koya, R.C., Graeber, T.G., Comin-Anduix, B., and Ribas, A. (2015). Improved antitumor activity of immunotherapy with BRAF and MEK inhibitors in BRAF(V600E) melanoma. *Sci. Transl. Med.* 7, 279ra241.
- Jakacki, R.I., Cohen, K.J., Buxton, A., Krailo, M.D., Burger, P.C., Rosenblum, M.K., Brat, D.J., Hamilton, R.L., Eckel, S.P., Zhou, T., et al. (2016). Phase 2 study of concurrent radiotherapy and temozolomide followed by temozolomide and lomustine in the treatment of children with high-grade glioma: a report of the Children's Oncology Group ACNS0423 study. *Neuro Oncol.* 18, 1442–1450.
- Jenkinson, M., Bannister, P., Brady, M., and Smith, S. (2002). Improved optimization for the robust and accurate linear registration and motion correction of brain images. *Neuroimage* 17, 825–841.
- Jones, C., and Baker, S.J. (2014). Unique genetic and epigenetic mechanisms driving paediatric diffuse high-grade glioma. *Nat. Rev. Cancer* 14, 651–661.
- Jones, C., Karajannis, M.A., Jones, D.T., Kieran, M.W., Monje, M., Baker, S.J., Becher, O.J., Cho, Y.J., Gupta, N., Hawkins, C., et al. (2016). Pediatric high-grade glioma: biologically and clinically in need of new thinking. *Neuro Oncol.* 19, 153–161.
- Karremann, M., Gielen, G.H., Hoffmann, M., Wiese, M., Colditz, N., Warmuth-Metz, M., Bison, B., Claviez, A., van Vuurden, D.G., von Bueren, A.O., et al. (2018). Diffuse high-grade gliomas with H3 K27M mutations carry a dismal prognosis independent of tumor location. *Neuro Oncol.* 20, 123–131.
- Khuong-Quang, D.A., Buczkowicz, P., Rakopoulos, P., Liu, X.Y., Fontebasso, A.M., Bouffet, E., Bartels, U., Albrecht, S., Schwartzentruber, J., Letourneau, L., et al. (2012). K27M mutation in histone H3.3 defines clinically and biologically distinct subgroups of pediatric diffuse intrinsic pontine gliomas. *Acta Neuropathol.* 124, 439–447.
- Kmieciak, J., Poli, A., Brons, N.H., Waha, A., Eide, G.E., Enger, P.O., Zimmer, J., and Chekenya, M. (2013). Elevated CD3+ and CD8+ tumor-infiltrating immune cells correlate with prolonged survival in glioblastoma patients despite integrated immunosuppressive mechanisms in the tumor microenvironment and at the systemic level. *J. Neuroimmunol.* 264, 71–83.
- Korshunov, A., Ryzhova, M., Hovestadt, V., Bender, S., Sturm, D., Capper, D., Meyer, J., Schrimpf, D., Kool, M., Northcott, P.A., et al. (2015). Integrated analysis of pediatric glioblastoma reveals a subset of biologically favorable

- tumors with associated molecular prognostic markers. *Acta Neuropathol.* 129, 669–678.
- Mackay, A., Burford, A., Carvalho, D., Izquierdo, E., Fazal-Salom, J., Taylor, K.R., Bjerke, L., Clarke, M., Vinci, M., Nandhabalan, M., et al. (2017). Integrated molecular meta-analysis of 1,000 pediatric high-grade and diffuse intrinsic pontine glioma. *Cancer Cell* 32, 520–537 e525.
- Narayana, A., Kunakkat, S., Chacko-Mathew, J., Gardner, S., Karajannis, M., Raza, S., Wisoff, J., Weiner, H., Harter, D., and Allen, J. (2010). Bevacizumab in recurrent high-grade pediatric gliomas. *Neuro Oncol.* 12, 985–990.
- Ostrom, Q.T., Gittleman, H., Fulop, J., Liu, M., Blanda, R., Kromer, C., Wolinsky, Y., Kruchko, C., and Barnholtz-Sloan, J.S. (2015). CBTRUS statistical report: primary brain and central nervous system tumors diagnosed in the United States in 2008–2012. *Neuro Oncol.* 17 (Suppl 4), iv1–iv62.
- Palma, L., Di Lorenzo, N., and Guidetti, B. (1978). Lymphocytic infiltrates in primary glioblastomas and recidivous gliomas. Incidence, fate, and relevance to prognosis in 228 operated cases. *J. Neurosurg.* 49, 854–861.
- Paugh, B.S., Qu, C., Jones, C., Liu, Z., Adamowicz-Brice, M., Zhang, J., Bax, D.A., Coyle, B., Barrow, J., Hargrave, D., et al. (2010). Integrated molecular genetic profiling of pediatric high-grade gliomas reveals key differences with the adult disease. *J. Clin. Oncol.* 28, 3061–3068.
- Pollack, I.F., Boyett, J.M., Yates, A.J., Burger, P.C., Gilles, F.H., Davis, R.L., and Finlay, J.L.; Children's Cancer Group (2003a). The influence of central review on outcome associations in childhood malignant gliomas: results from the CCG-945 experience. *Neuro Oncol.* 5, 197–207.
- Pollack, I.F., Finkelstein, S.D., Burnham, J., Hamilton, R.L., Yates, A.J., Holmes, E.J., Boyett, J.M., and Finlay, J.L. (2003b). Association between chromosome 1p and 19q loss and outcome in pediatric malignant gliomas: results from the CCG-945 cohort. *Pediatr. Neurosurg.* 39, 114–121.
- Pollack, I.F., Finkelstein, S.D., Woods, J., Burnham, J., Holmes, E.J., Hamilton, R.L., Yates, A.J., Boyett, J.M., Finlay, J.L., and Sposto, R.; Children's Cancer Group (2002). Expression of p53 and prognosis in children with malignant gliomas. *N. Engl. J. Med.* 346, 420–427.
- Pollack, I.F., Hamilton, R.L., Burger, P.C., Brat, D.J., Rosenblum, M.K., Murdoch, G.H., Nikiforova, M.N., Holmes, E.J., Zhou, T., Cohen, K.J., et al. (2010a). Akt activation is a common event in pediatric malignant gliomas and a potential adverse prognostic marker: a report from the Children's Oncology Group. *J. Neurooncol.* 99, 155–163.
- Pollack, I.F., Hamilton, R.L., Sobol, R.W., Burnham, J., Yates, A.J., Holmes, E.J., Zhou, T., and Finlay, J.L. (2006). O6-methylguanine-DNA methyltransferase expression strongly correlates with outcome in childhood malignant gliomas: results from the CCG-945 Cohort. *J. Clin. Oncol.* 24, 3431–3437.
- Pollack, I.F., Hamilton, R.L., Sobol, R.W., Nikiforova, M.N., Lyons-Weiler, M.A., LaFramboise, W.A., Burger, P.C., Brat, D.J., Rosenblum, M.K., Holmes, E.J., et al. (2011). IDH1 mutations are common in malignant gliomas arising in adolescents: a report from the Children's Oncology Group. *Childs Nerv. Syst.* 27, 87–94.
- Pollack, I.F., Hamilton, R.L., Sobol, R.W., Nikiforova, M.N., Nikiforov, Y.E., Lyons-Weiler, M.A., LaFramboise, W.A., Burger, P.C., Brat, D.J., Rosenblum, M.K., et al. (2010b). Mismatch repair deficiency is an uncommon mechanism of alkylator resistance in pediatric malignant gliomas: a report from the Children's Oncology Group. *Pediatr. Blood Cancer* 55, 1066–1071.
- Robinson, G.W., Orr, B.A., and Gajjar, A. (2014). Complete clinical regression of a BRAF V600E-mutant pediatric glioblastoma multiforme after BRAF inhibitor therapy. *BMC Cancer* 14, 258.
- Rorden, C., Kamath, H.O., and Bonilha, L. (2007). Improving lesion-symptom mapping. *J. Cogn. Neurosci.* 19, 1081–1088.
- Rutledge, W.C., Kong, J., Gao, J., Gutman, D.A., Cooper, L.A., Appin, C., Park, Y., Scarpace, L., Mikkelsen, T., Cohen, M.L., et al. (2013). Tumor-infiltrating lymphocytes in glioblastoma are associated with specific genomic alterations and related to transcriptional class. *Clin. Cancer Res.* 19, 4951–4960.
- Salloum, R., DeWire, M., Lane, A., Goldman, S., Hummel, T., Chow, L., Miles, L., Sutton, M., Stevenson, C., Fouladi, M., and Leach, J. (2015). Patterns of progression in pediatric patients with high-grade glioma or diffuse intrinsic pontine glioma treated with Bevacizumab-based therapy at diagnosis. *J. Neurooncol.* 121, 591–598.
- Sandmann, T., Bourgon, R., Garcia, J., Li, C., Cloughesy, T., Chinot, O.L., Wick, W., Nishikawa, R., Mason, W., Henriksson, R., et al. (2015). Patients with proneural glioblastoma may derive overall survival benefit from the addition of bevacizumab to first-line radiotherapy and temozolomide: retrospective analysis of the AVAglio trial. *J. Clin. Oncol.* 33, 2735–2744.
- Scholz, A., Harter, P.N., Cremer, S., Yalcin, B.H., Gurnik, S., Yamaji, M., Di Tacchio, M., Sommer, K., Baumgarten, P., Bahr, O., et al. (2016). Endothelial cell-derived angiopoietin-2 is a therapeutic target in treatment-naive and bevacizumab-resistant glioblastoma. *EMBO Mol. Med.* 8, 39–57.
- Schwartzentruber, J., Korshunov, A., Liu, X.Y., Jones, D.T., Pfaff, E., Jacob, K., Sturm, D., Fontebasso, A.M., Quang, D.A., Tonjes, M., et al. (2012). Driver mutations in histone H3.3 and chromatin remodelling genes in paediatric glioblastoma. *Nature* 482, 226–231.
- Shlien, A., Campbell, B.B., de Borja, R., Alexandrov, L.B., Merico, D., Wedge, D., Van Loo, P., Tarpey, P.S., Coupland, P., Behjati, S., et al. (2015). Combined hereditary and somatic mutations of replication error repair genes result in rapid onset of ultra-hypermutated cancers. *Nat. Genet.* 47, 257–262.
- Sturm, D., Orr, B.A., Toprak, U.H., Hovestadt, V., Jones, D.T., Capper, D., Sill, M., Buchhalter, I., Northcott, P.A., Leis, I., et al. (2016). New brain tumor entities emerge from molecular classification of CNS-PNETs. *Cell* 164, 1060–1072.
- Sturm, D., Witt, H., Hovestadt, V., Khuong-Quang, D.A., Jones, D.T., Konermann, C., Pfaff, E., Tonjes, M., Sill, M., Bender, S., et al. (2012). Hotspot mutations in H3F3A and IDH1 define distinct epigenetic and biological subgroups of glioblastoma. *Cancer Cell* 22, 425–437.
- Sulman, E.P., Won, M., Blumenthal, D.T., Vogelbaum, M.A., Colman, H., Jenkins, R.B., Chakravarti, A., Jeraj, R., Brown, P.D., Jaeckle, K.A., et al. (2013). Molecular predictors of outcome and response to bevacizumab (BEV) based on analysis of RTOG 0825, a phase III trial comparing chemoradiation (CRT) with and without BEV in patients with newly diagnosed glioblastoma (GBM). *J. Clin. Oncol.* 31, https://doi.org/10.1200/jco.2013.31.18_suppl.lba2010.
- Wallin, J.J., Bendell, J.C., Funke, R., Sznol, M., Korski, K., Jones, S., Hernandez, G., Mier, J., He, X., Hodi, F.S., et al. (2016). Atezolizumab in combination with bevacizumab enhances antigen-specific T-cell migration in metastatic renal cell carcinoma. *Nat. Commun.* 7, 12624.
- Wilmott, J.S., Long, G.V., Howle, J.R., Haydu, L.E., Sharma, R.N., Thompson, J.F., Kefford, R.F., Hersey, P., and Scolyer, R.A. (2012). Selective BRAF inhibitors induce marked T-cell infiltration into human metastatic melanoma. *Clin. Cancer Res.* 18, 1386–1394.
- Wu, G., Broniscer, A., McEachron, T.A., Lu, C., Paugh, B.S., Beckson, J., Qu, C., Ding, L., Huether, R., Parker, M., et al. (2012). Somatic histone H3 alterations in pediatric diffuse intrinsic pontine gliomas and non-brainstem glioblastomas. *Nat. Genet.* 44, 251–253.
- Wu, G., Diaz, A.K., Paugh, B.S., Rankin, S.L., Ju, B., Li, Y., Zhu, X., Qu, C., Chen, X., Zhang, J., et al. (2014). The genomic landscape of diffuse intrinsic pontine glioma and pediatric non-brainstem high-grade glioma. *Nat. Genet.* 46, 444–450.
- Zhang, Y., Pan, C., Wang, J., Cao, J., Liu, Y., Wang, Y., and Zhang, L. (2017). Genetic and immune features of resectable malignant brainstem gliomas. *Oncotarget* 8, 82571–82582.

STAR★METHODS

KEY RESOURCES TABLE

REAGENT or RESOURCE	SOURCE	IDENTIFIER
Critical Commercial Assays		
DNeasy blood & tissue kit	Qiagen	69504
QIAmp DNA FFPE tissue kit	Qiagen	56404
RNeasy mini kit	Qiagen	74104
QIAquick PCR purification kit	Qiagen	28104
BigDye terminator v3.1 mix	Thermo Fisher	4337455
SureSelect Human All Exon capture set V6	Agilent	5190-8863
SureSelect RNA Capture, 0.5-2.9Mb	Agilent	5190-4944
Deposited Data		
Exome and RNA sequencing of new samples	This paper	EGA: EGAS00001002328
Illumina methylation BeadChip profiling of new samples	This paper	ArrayExpress: E-MTAB-5552
Sequencing and methylation data	This paper	cavatica.org
Oligonucleotides		
Primer: <i>H3F3A</i> _forward FFPE TGGCTCGTACAAAGCAGACT	This paper	N/A
Primer: <i>H3F3A</i> _reverse FFPE ATATGGATACATACAAGAGAGACT	This paper	N/A
Primer: <i>H3F3A</i> _forward FROZEN GATTTTGGGTAGACGTAATCTTCA	This paper	N/A
Primer: <i>H3F3A</i> _reverse FROZEN TTTCCTGTTATCCATCTTTTGT	This paper	N/A
Antibodies		
MLH1	BD Pharmingen	G168-728; RRID: AB_395227
PMS2	BD Pharmingen	A16-4; RRID: AB_396410
MSH2	DIAG-BIOSYSTEMS	25D12; RRID: AB_10978033
MSH6	DIAG-BIOSYSTEMS	44; RRID: AB_1958490
H3K27M	Merck	ABE419
H3G34R	University of Nottingham	richard.grundy@nottingham.ac.uk
CD8	Dako	C8/144B; RRID: AB_2075537
CD68	Glostrup	KP1; RRID: AB_2661840
Software and Algorithms		
Mutation Surveyor	SoftGenetics	softgenetics.com/mutationSurveyor.php
4Peaks	Nucleobytes	nucleobytes.com/4peaks/
minfi	BioConductor	bioconductor.org/packages/release/bioc/html/minfi.html
conumee	BioConductor	bioconductor.org/packages/release/bioc/html/conumee.html
BEDtools	University of Utah	github.com/arq5x/bedtools2
DNAcopy	BioConductor	bioconductor.org/packages/release/bioc/html/DNAcopy.html
CopyNumber450kData	BioConductor	bioconductor.org/packages/release/data/experiment/html/CopyNumber450kData.html
MNP	DKFZ Heidelberg	moleculameuropathology.org/mnp
Bowtie2	Johns Hopkins University	bowtie-bio.sourceforge.net/bowtie2/index.shtml
TopHat	Johns Hopkins University	ccb.jhu.edu/software/tophat/index.shtml

(Continued on next page)

Continued

REAGENT or RESOURCE	SOURCE	IDENTIFIER
cufflinks	University of Washington	ole-trapnell-lab.github.io/cufflinks/cufflinks/
DESeq2	BioConductor	bioconductor.org/packages/release/bioc/html/DESeq2.html
Gene Set Enrichment Analysis	Broad Institute	http://software.broadinstitute.org/gsea
bwa	Sanger Institute	http://bio-bwa.sourceforge.net/
Genome Analysis Toolkit	Broad Institute	oftware.broadinstitute.org/gatk/
Variation Effect predictor	Ensembl tools	ensembl.org/info/docs/variation/vep
BCBio	Harvard TH Chan	bcb.io/
ANNOVAR	Children's Hospital of Philadelphia	annovar.openbioinformatics.org/en/latest/
ExAc	Broad Institute	exac.broadinstitute.org/
SIFT	J Craig Venter Institute	sift.jcvi.org
PolyPhen	Harvard	genetics.bwh.harvard.edu/pph2
Manta	Illumina	github.com/Illumina/manta
Oncoprinter	Memorial Sloan Kettering	cbioportal.org/oncoprinter.jsp
Circos	Michael Smith Genome Sciences Center	circos.ca
R	The Comprehensive R Archive Network	r-project.org
Other		
Integrated mutation, copy number, expression and methylation data	This paper and cited sources	pedcbioportal.org

CONTACT FOR REAGENT AND RESOURCE SHARING

Further information and requests for resources and reagents should be directed to and will be fulfilled by the Lead Contact, Chris Jones (chris.jones@icr.ac.uk).

EXPERIMENTAL MODEL AND SUBJECT DETAILS**Patient Samples**

All patient samples were collected after signed consent to the HERBY translational research program, under full Research Ethics Committee approval at each participating center. Tumor material was available from 89 patients (out of a total of 113 providing consent) from 13 countries: France (n=27, Hospital Pour Enfants De La Timone, Marseille; Hôpital des Enfants, Toulouse; Centre Hospitalier Régional Universitaire, Tours; CHRU Rennes; CHRU Nancy; Institut Curie, Paris; CHRU Strasbourg; Cancer Research Center of Lyon; Institut Gustave Roussy, Villejuif; CHRU Clermont-Ferrand; Oscar Lambret Center, Lille; CHRU Angers), UK (n=17, Royal Victoria Infirmary, Newcastle; NHS Lothian, Edinburgh; Nottingham University Hospital, Nottingham; Great Ormond Street Hospital, London; Royal Hospital for Children, Bristol; Cambridge University Hospital, Cambridge; Leeds Teaching Hospitals, Leeds; Alder Hey Children's Hospital, Liverpool; Royal Marsden Hospital, Sutton), Italy (n=14, Istituto Giannina Gaslini, Genoa; Istituto Nazionale Tumori, Milan), Spain (n=6, Hospital San Joan de Deu, Barcelona; Hospital Universitari i Politècnic la Fe, Valencia), Canada (n=5, Hospital for Sick Children, Toronto; Alberta Children's Hospital, Calgary), Netherlands (n=4, Radboud University Medical Center, Nijmegen; Erasmus Medical Center, Rotterdam), Czech Republic (n=3, Faculty Hospital, Brno; Charles University Hospital, Prague), Denmark (n=3, Aarhus University Hospital, Aarhus; Rigshospitalet, Copenhagen), Hungary (n=3, Semmelweis University, Budapest), Sweden (n=3, University of Gothenburg, Gothenburg; Skåne University Hospital, Lund), Poland (n=2, Children's Memorial Health Institute, Warsaw), Austria (n=1, Kepler Universitätsklinikum, Linz), and Belgium (n=1, Universitaire Ziekenhuizen, Leuven).

Pathological Review

All patients had their initial local diagnosis of HGG confirmed according to the WHO 2007 classification by a central HERBY reference neuropathologist prior to enrollment. Subsequently, all specimens were further subjected to a consensus review by the HERBY panel of five independent expert paediatric neuropathologists, who also applied the diagnostic criteria of the WHO 2016 classification.

Radiological Anatomical Localization

Tumor localization was determined by the HERBY panel of paediatric neuroradiologists. Tumors were assigned to lobar, basal ganglia, thalamic, non-pontine brainstem or cerebellar locations. As many of the tumors spanned more than one of these locations, post hoc radiological analysis by one of the HERBY Neuroradiologists was undertaken to determine the epicenter of the tumor origin; this was used to classify the site of origin of the tumor in each case.

METHOD DETAILS

Nucleic Acid Extraction

DNA was extracted from frozen tissue by homogenisation prior to following the DNeasy Blood & Tissue kit protocol (Qiagen, Crawley, UK). DNA was extracted from formalin-fixed, paraffin-embedded (FFPE) pathology blocks after manual macrodissection using the QIAamp DNA FFPE tissue kit protocol (Qiagen). Matched normal DNA was extracted from blood samples using the DNeasy Blood & Tissue kit (Qiagen, Crawley, UK). Concentrations were measured using a Qubit fluorometer (Life Technologies, Paisley, UK). RNA was extracted by following the RNeasy Mini Kit protocol (Qiagen), and quantified on a 2100 Bioanalyzer (Agilent Technologies).

H3F3A Sanger Sequencing

PCR for *H3F3A* was carried out on 89 cases using primers obtained from Life Technologies (Paisley, UK) (FFPE: for-TGGCTCGTACAAAGCAGACT; rev-ATATGGATACATACAAGAGAGACT; FROZEN: for-GATTTTGGGTAGACGTAATCTTCA; rev-TTTCCTGTATCCATCTTTTGT). Sequences were analysed using Mutation Surveyor (SoftGenetics, PN, USA) and manually with 4Peaks (Nucleobytes, Aalsmeer, Netherlands). Only three cases left insufficient DNA for exome sequencing, all of which were found to harbor K27M mutations, and thus additional Sanger sequencing for genes encoding H3.1 variants were not undertaken.

Methylation Profiling

50-500 ng DNA was bisulphite-modified and analyzed for genome-wide methylation patterns using the Illumina HumanMethylation450 BeadChip (450k) platform at either the DKFZ or the University College London Genomics Center, according to the manufacturers instructions. All samples were checked for expected and unexpected genotype matches by pairwise correlation of the 65 genotyping probes on the 450k array.

MGMT Promoter Methylation

To evaluate the methylation status of the *MGMT* promoter region, we used either the *MGMT_STP27* logistic regression model from Illumina 450k methylation array data, or methylation-specific (MS-) PCR. For MS-PCR, 300-1500 ng DNA was sodium bisulphite-treated and PCR products analyzed on an the ABI7900HT instrument (Applied Biosystems, Foster City, CA, USA) to quantify the copy number of *MGMT/ACTB* (MDxHealth, Irvine, CA, USA).

Next-Generation Sequencing

50-500 ng DNA from 86 cases was sent for exome sequencing at the Tumor Profiling Unit (ICR, London, UK) using the Agilent SureSelectXT Human All Exon V6 platform with additional customized coverage of all histone H3 genes and the *TERT* promoter (Agilent, Santa Clara, CA, USA), and paired-end-sequenced on an Illumina HiSeq2500 (Illumina, San Diego, CA, USA) with one single patient-matched tumor/normal pair per lane where possible. The average median coverage was 426x for the frozen tumors (range 351-598x), 321x for the FFPE tumors (range 115-519x) and 163x for normal samples (range 116-464x). A customized panel of biotinylated DNA probes (NimbleGen) was developed for the detection of structural variants (translocations and duplications) and potential amplifications. The panel capture a total of 22 genes recently implicated in brain tumors (*ALK*, *BCOR*, *BRAF*, *c11orf95*, *C19MC*, *CIC*, *ETV6*, *FGFR1-3*, *FOXR2*, *KIAA1549*, *MET*, *MN1*, *MYB*, *MYBL1*, *NTRK1-3*, *RAF*, *RELA*, *TPM3* and *YAP1*). Library preparation was performed using 50-200 ng of genomic DNA using the HyperPlus Kit (Kapa Biosystems, Wilmington MA, USA) and SeqCap EZ adapters (Roche). Following fragmentation, DNA was end-repaired, A-tailed and indexed adapters ligated. DNA was amplified, multiplexed and hybridized using 1 μ g of total pre-capture library DNA to the design of DNA baits (NimbleGen SeqCap EZ Developer library, Roche). After hybridization, capture libraries were amplified and sequencing was performed on a NextSeq500 (Illumina) with 2 x 150 bp, paired-end reads following manufacturer's instructions. RNA from frozen tumors was sequenced on an Illumina HiSeq2500 as 100 bp paired end reads.

Immunohistochemistry

4 μ M sections were stained by an automated Discovery XT (for H3G34R) or Benchmark XT (Ventana Medical Systems, Tucson, USA). A standard pre-treatment protocol included CC1 buffer (or CC2 for H3G34R) and then a primary antibody incubation for 32 minutes (92 minutes for MLH1, PMS2, MSH2 and MSH6) at room temperature (37°C for H3K27M and MLH1). Antibodies used were directed against MLH1 (BD Pharmingen, clone G168-728, 1/300), PMS2 (BD Pharmingen, clone A16-4, 1/150), MSH2 (DIAG-BIOSYSTEMS, clone 25D12, 1/10), MSH6 (DIAG-BIOSYSTEMS, clone 44, 1/50), H3K27M (Merck, polyclonal, 1/1000), CD8 (Dako, clone C8/144B, 1/100), CD68 (Glostrup, clone KP1, 1/400) and H3G34R (kind gift from Richard Grundy, Children's Brain Tumor Research Center, Nottingham, UK, polyclonal; 1/150). Antibody binding was visualized with an Optiview Kit (Roche-Ventana, Tucson, USA). Diaminobenzidine-tetra-hydrochloride (DAB, Ventana) was used as the chromogen.

Pathological Assessment of Immune Response

CD8 immunoreactivity was assessed as the percentage of the surface area of the tumor covered by CD8⁺ cells present at a density belonging to one of four reference bins of increasing density (I0, I1, I2, I3). A further quantitative assessment of the percentage of the pathologist-defined central tumor area of CD8⁺ cells was also performed. A qualitative categorization of the tumor as a whole as either 'inflamed', 'heterogeneous' or an immune 'desert' was also provided. Patients in the upper quartile of central tumor area

CD8 cell positivity with a heterogeneous or inflamed phenotype were classed as CD8-high. A histologically-defined assessment of tumor infiltrating lymphocytes (TILs) was carried out according to two distinct schema. Palma et al. (Palma et al., 1978) includes Category A (several perivascular cuffs of more than three layers of lymphocytes and often lymphocytes also scattered among tumor cells), Category B (three or four thin perivascular cuffs in the tumor) and Category C (no clear lymphocytes present); Rutledge et al. (Rutledge et al., 2013) includes Category 0 (absence of lymphocytes), Category 1+ (lymphocytes in less than 50% of the tumor) and Category 2+ (lymphocytes in more than 50% of the tumor).

QUANTIFICATION AND STATISTICAL ANALYSIS

Sequence Analysis

Exome capture reads were aligned to the hg19 build of the human genome using bwa v0.7.5a (bio-bwa.sourceforge.net), and PCR duplicates removed with PicardTools 1.5 (pcard.sourceforge.net). Somatic single nucleotide variants were called using the Genome Analysis Tool Kit v3.3-0 based upon current Best Practices using local re-alignment around InDels, downsampling and base recalibration with variants called by the Unified Genotyper (broadinstitute.org/gatk/). Somatic variants were covered by at least 20 reads in both tumor and normal sequences and carried at least 5 ALT reads in the tumor sequence; unmatched exomes (n=3) were annotated by ExAc and ANNOVAR. Variants were annotated using the Ensembl Variant Effect Predictor v74 (ensembl.org/info/docs/variation/vep) incorporating SIFT (sift.jcvi.org) and PolyPhen (genetics.bwh.harvard.edu/pph2) predictions, COSMIC v64 (sanger.ac.uk/genetics/CGP/cosmic/) and dbSNP build 137 (ncbi.nlm.nih.gov/sites/SNP) annotations. Copy number was obtained by calculating \log_2 ratios of tumor/normal coverage binned into exons of known Ensembl genes, smoothed using circular binary segmentation (DNAcopy, www.bioconductor.org) and processed using in-house scripts. Mutation signatures were ascertained by grouping somatic substitutions on the basis of their 3' and 5' bases into 96 possible trinucleotide categories (Shlien et al., 2015). NGS fusion panel alignment was performed against the human reference sequence GRCh37/Hg19. Quality control (QC), variant annotation, deduplication and metrics were generated for each sample. Manta (<https://github.com/Illumina/manta>) and Breakdancer (breakdancer.sourceforge.net) were used for the detection of structural variants.

Methylation Profiling

Methylation data from the Illumina Infinium HumanMethylation450 BeadChip was preprocessed using the minfi package in R. DNA copy number was recovered from combined intensities using the conumee package with reference to methylation profiles from normal individuals provided in the CopyNumber450kData package. We have used the Heidelberg brain tumor classifier (Capper et al., 2018) (moleculareuropathology.org) to assign subgroup scores for each tumor compared to 91 different brain tumor entities using a training set built from 2,801 tumors implemented in the MNP R package (v11b2). Simplified methylation subgroup assignments were then made to incorporate cases carrying G34R/V or K27M mutations in H3 histones, *IDH1* mutation at R132, low grade glioma-like profiles (predominantly diffuse infantile ganglioglioma and pilocytic astrocytoma) and those similar to pleomorphic xanthoastrocytoma (PXA). Low-scoring cases, or those with a high normal cell contamination were assigned to G34, K27 or IDH1 groups if the respective mutation was identified. Wild-type HGG encompassed many other methylation subgroups and were simply assigned by exclusion with the groups above. Clustering of beta values from methylation arrays was performed using the 10K probeset from the Heidelberg classifier based upon Euclidean distance with a ward algorithm. Methylation heatmaps show only the most variable probes of the classifier between simplified methylation subgroups.

RNAseq

RNA sequences were aligned to hg19 and organized into de-novo spliced alignments using bowtie2 and TopHat version 2.1.0 (ccb.jhu.edu/software/tophat). Fusion transcripts were detected using chimerascan version 0.4.5a filtered to remove common false positives. RNASeq raw count files were used to construct an expression matrix using Roche's internal pipeline. The expression matrix was normalized using edgeR and Voom in R (cran.rproject.org/), and a heatmap was created from the absolute gene expression data using Tibco Spotfire, as previously described (Brouwer-Visser et al., 2018). The mean expression of the signature genes was used to compare MAPK-altered to non-altered samples and statistical significance calculated using a two-tailed unpaired t-test. The mean expression was also used to correlate with CD8 positivity by IHC. Gene Set enrichment analysis was performed using the GSEA java application based upon pairwise comparisons of MAPK altered versus wild-type for curated canonical gene sets. All data are deposited in the European Genome-phenome Archive (ebi.ac.uk/ega/home) under accession number EGAS00001002328.

Tumor Lesion Maps

Pre-surgery tumor volume regions of interest (ROIs) were drawn on T2-weighted/Fluid-attenuated inversion recovery (FLAIR) magnetic resonance (MR) images by an experienced paediatric neuroradiologist (TJ). The images and corresponding ROIs were affinely registered, using FSL (Jenkinson et al., 2002), to a paediatric template (Left-Right Symmetric, 7.5–13.5 years old) from the Montreal Neurological Institute (<http://www.bic.mni.mcgill.ca/ServicesAtlases/NIHPD-obj1>) (Fonov et al., 2011). A further manual correction step was performed to limit tumor mass effects. Once registered to a common space, overall tumor lesion overlap maps were created using MRICron (Rorden et al., 2007).

Statistical Analysis

Statistical analysis was carried out using R 3.3.0 (www.r-project.org) and GraphPad Prism 7. Categorical comparisons of counts were carried out using Fishers exact test, comparisons between groups of continuous variables employed Student's t-test or ANOVA. Univariate differences in survival were analysed by the Kaplan-Meier method and significance determined by the log-rank test. Exploratory Cox regression analyses were conducted to assess the impact of molecular prognostic and predictive factors. Confirmation of proportional hazards was assessed by calculating Schoenfeld residuals. All tests were two-sided and a p value of less than 0.05 was considered significant.

DATA AND SOFTWARE AVAILABILITY

All newly generated data have been deposited in the European Genome-phenome Archive (www.ebi.ac.uk/ega) with accession number EGAS00001002328 (sequencing) or ArrayExpress (www.ebi.ac.uk/arrayexpress/) with accession number E-MTAB-5552 (450k methylation).

ADDITIONAL RESOURCES

Curated gene-level copy number, mutation data and RNAseq data are provided as part of the paediatric-specific implementation of the cBioPortal genomic data visualization portal (pedcbioportal.org). Raw data files are also made available through the Cavatica NIH-integrated cloud platform (cavatica.org).

Supplemental Information

**Molecular, Pathological, Radiological, and Immune
Profiling of Non-brainstem Pediatric High-Grade
Glioma from the HERBY Phase II Randomized Trial**

Alan Mackay, Anna Burford, Valeria Molinari, David T.W. Jones, Elisa Izquierdo, Jurriaan Brouwer-Visser, Felice Giangaspero, Christine Haberler, Torsten Pietsch, Thomas S. Jacques, Dominique Figarella-Branger, Daniel Rodriguez, Paul S. Morgan, Pichai Raman, Angela J. Waanders, Adam C. Resnick, Maura Massimino, Maria Luisa Garrè, Helen Smith, David Capper, Stefan M. Pfister, Thomas Würdinger, Rachel Tam, Josep Garcia, Meghna Das Thakur, Gilles Vassal, Jacques Grill, Tim Jaspan, Pascale Varlet, and Chris Jones

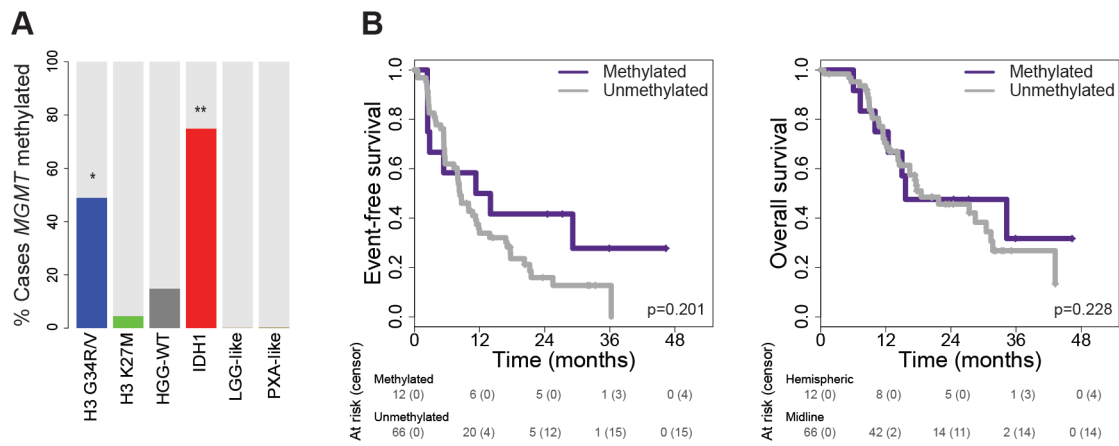
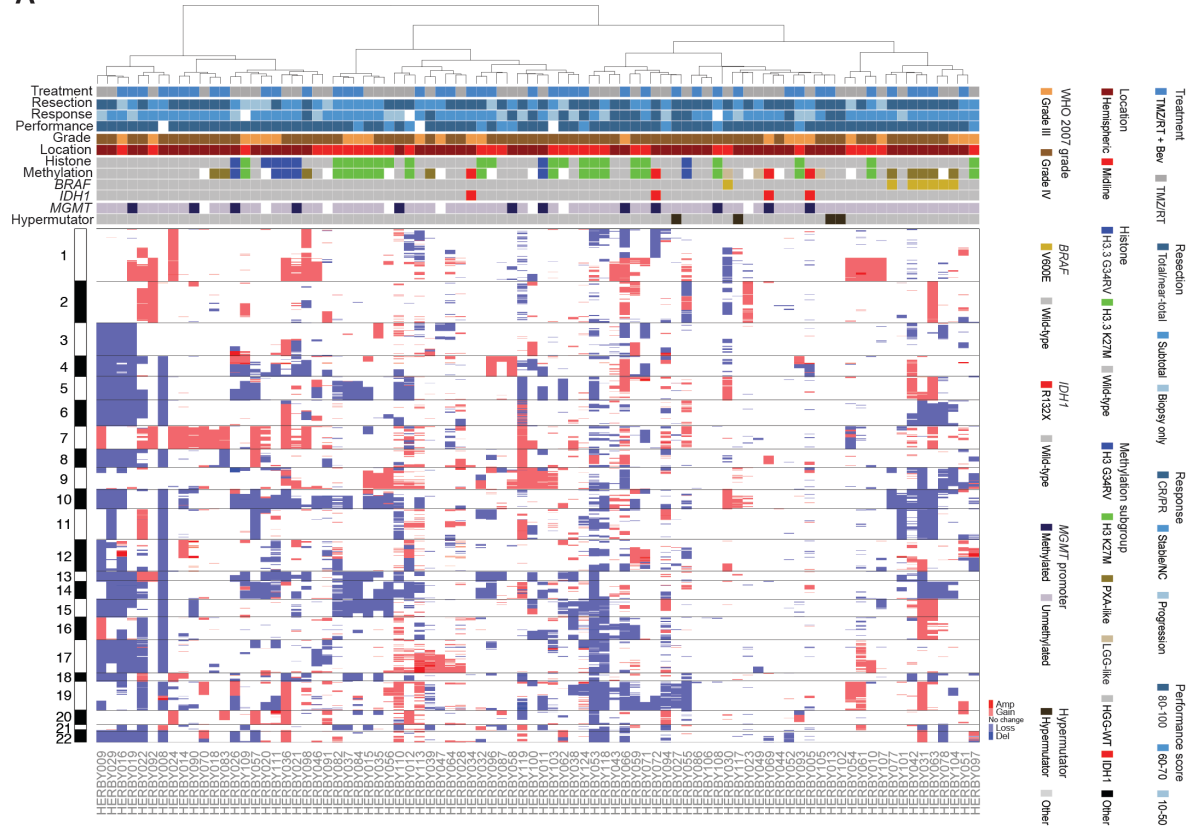
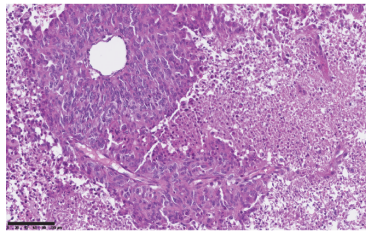


Figure S1 (related to Figure 2) – *MGMT* promoter methylation. (A) Barplots of number of cases with methylated *MGMT* promoter, subdivided by methylation subgroup. (B) Kaplan-Meier plot of event-free and overall survival of cases (y axis) separated by *MGMT* status, time given in months (x axis) and p value calculated by the log-rank test.

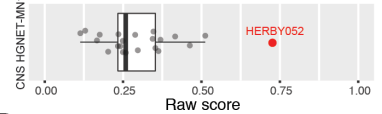
A



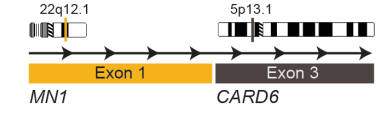
B



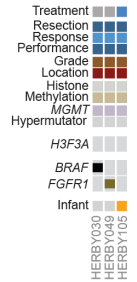
C



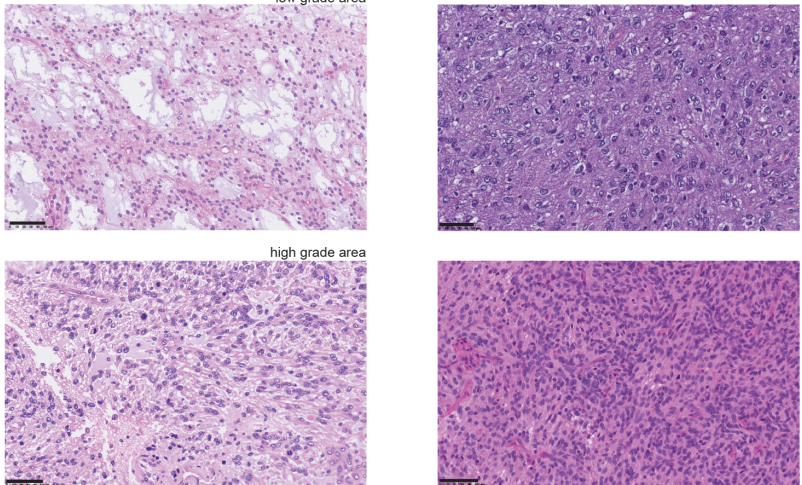
D



E



F



G

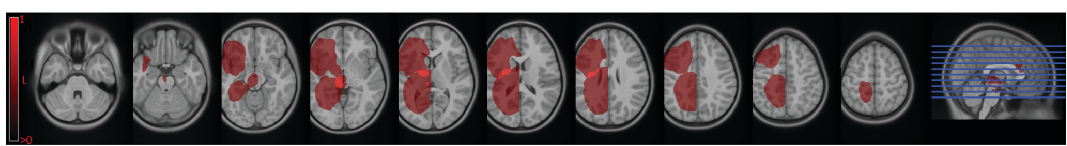


Figure S2 (related to Figure 3) – DNA copy number profiling and non-HGG-like entities. (A) Heatmap representation of segmented DNA copy number for 86 samples derived from exome coverage data (dark red, amplification; red, gain; dark blue, deletion; blue, loss). Samples are arranged in columns clustered by gene-level data across the whole genome. Clinicopathological and molecular annotations are provided as bars according to the included key. CR/PR = complete response or partial response; Stable/NC = stable disease or no change. (B-D) CNS HGNET-MN1. Haematoxylin and eosin staining (B) of the case most closely resembling CNS HGNET-MN1 (HERBY052), as demonstrated by a boxplot of reference methylation classifier scores (C), and the presence of an *MN1:CARD6* gene fusion by capture panel sequencing (D). Scale bar = 100 μ m. (E) Integrated annotation of somatic mutations and DNA copy number changes in 3 samples classifying as LGG-like. Clinicopathological and molecular annotations are provided as bars according to the included key in Figure S1. (F) Haematoxylin and eosin staining of the three cases, all histologically classified as glioblastoma – (left) the presence of both low- (upper panel) and high grade (lower panel) areas of the tumor harboring *BRAF_V600E* mutation (HERBY049); (top right) case harboring an intragenic *FGFR1* duplication (HERBY030; both previous cases classifying as pilocytic astrocytoma); (bottom left) a case from the infant cohort, with a methylation profile most closely resembling desmoplastic infantile ganglioglioma (HERBY105). Scale bar = 50 μ m. (G) Radiological tumor lesion map of LGG-like cases. Brighter colored pixels indicate a higher probability of tumor incidence.

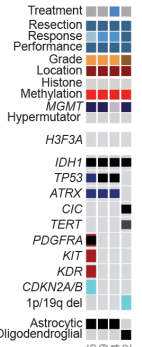
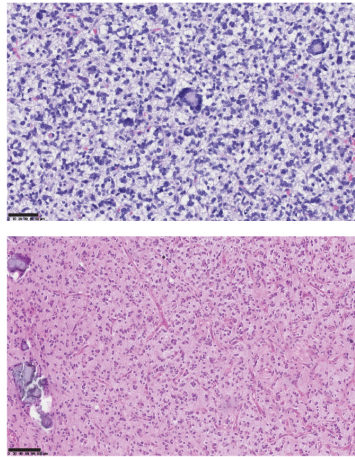
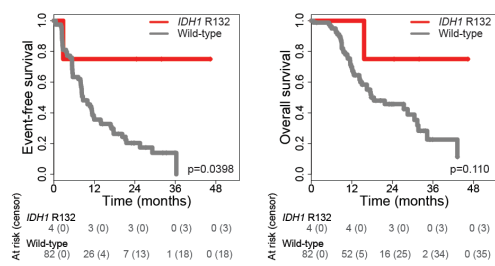
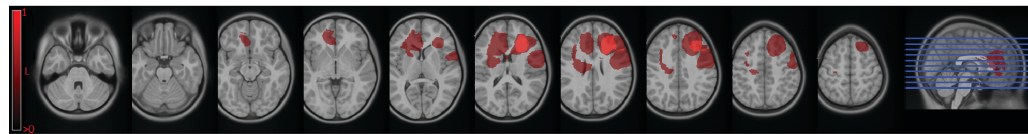
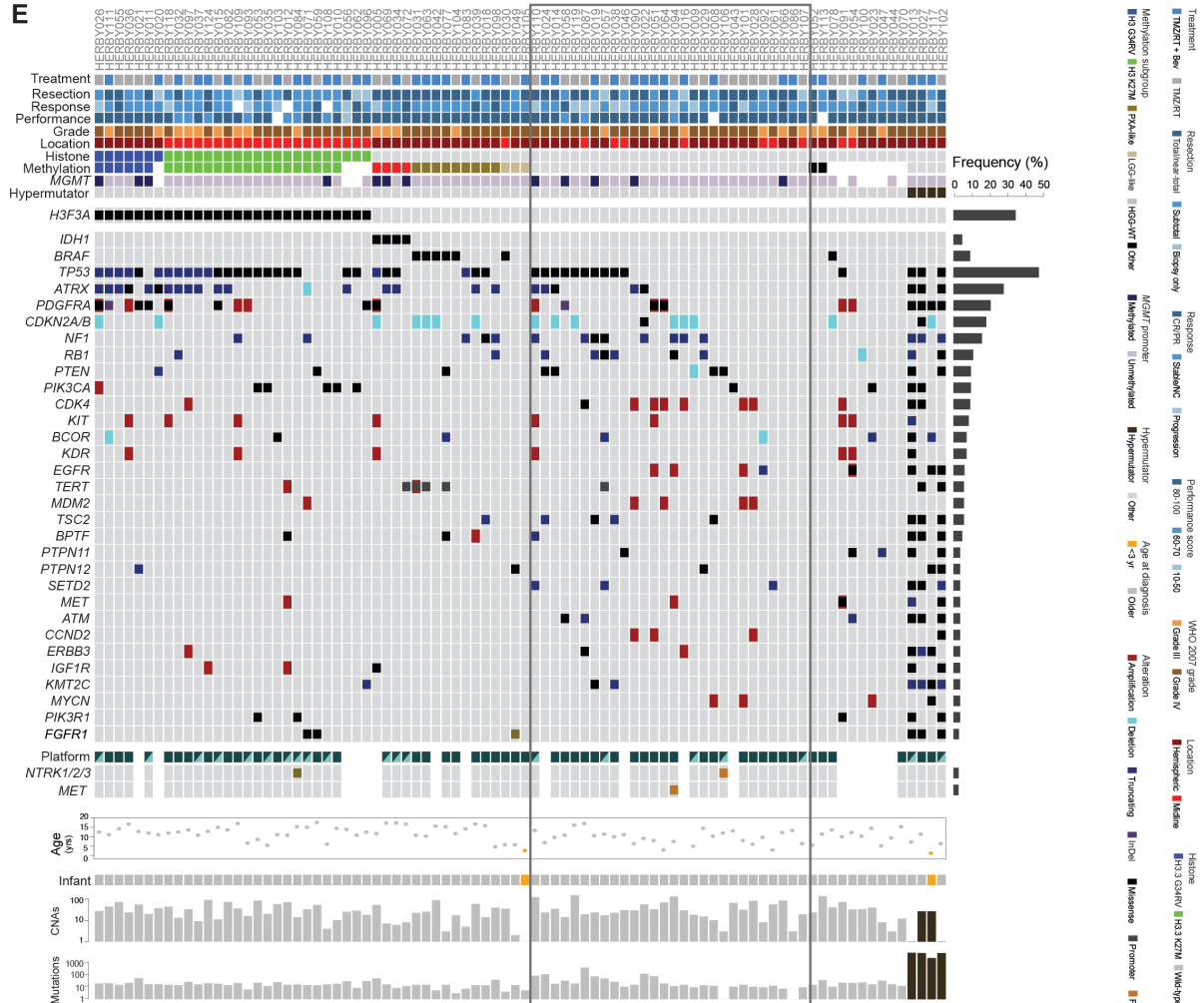
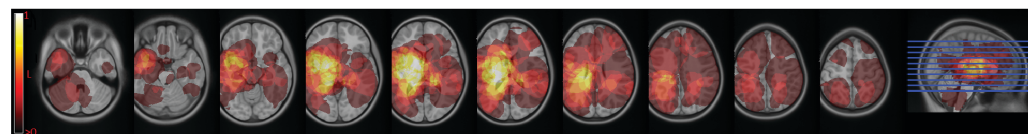
A**B****C****D****E****F**

Figure S3 (related to Figure 3) – *IDH1* mutant and *H3F3A/IDH1/BRAF* wild-type tumors. (A) Integrated annotation of somatic mutations and DNA copy number changes in 4 samples with *IDH1_R132* mutation. Clinicopathological and molecular annotations are provided as bars according to the included key in Figure S1. (B) Haematoxylin and eosin staining of cases showing astrocytic (top, HERBY005) and oligodendroglial (bottom, HERBY072) histological features. Scale bar = 50 μm (top) and 100 μm (bottom). (C) Kaplan-Meier plot of event-free and overall survival of cases (y axis) separated by *IDH1_R132* status, time given in months (x axis) and p value calculated by the log-rank test. (D) Radiological tumor lesion map of *IDH1* cases. Brighter colored pixels indicate a higher probability of tumor incidence. (E) Oncoprint representation of an integrated annotation of somatic mutations and DNA copy number changes for the 30 most frequently altered genes in 86 samples ($n \geq 3$, frequency barplot on the right, excluding hypermutator cases), ordered by histone and methylation subgroups. Selected common fusion events are also shown where available. Samples are arranged in columns with genes labelled along rows. Barplots are provided on a \log_{10} scale for numbers of copy number aberrations and somatic mutations per case. Clinicopathological and molecular annotations are provided as bars according to the included key. CR/PR = complete response or partial response; Stable/NC = stable disease or no change. The annotated box highlights *H3F3A/IDH1/BRAF* wild-type ‘HGG-WT’ tumors not otherwise assigned to a subgroup. (F) Radiological tumor lesion map of HGG-WT cases. Brighter colored pixels indicate a higher probability of tumor incidence.

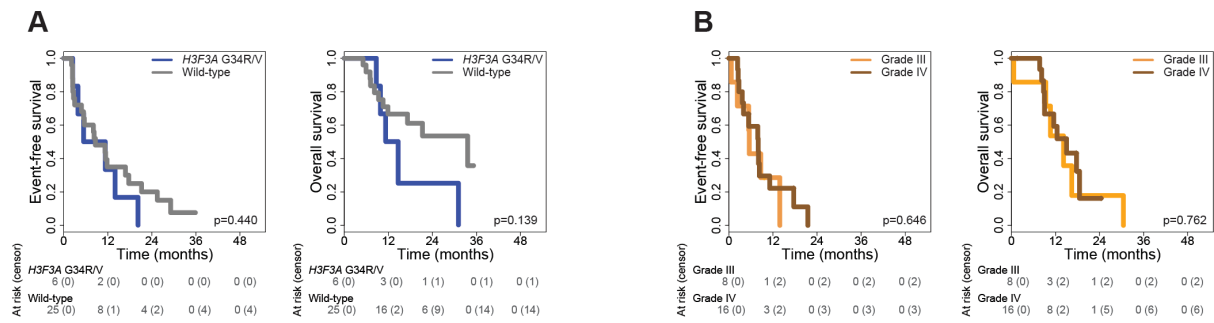


Figure S4 (related to Figure 4) – *H3F3A* mutant subgroups. (A) Kaplan-Meier plot of event-free and overall survival (y axis) of 31 cerebral hemispheric cases, excluding those classified by methylation profiling as IDH1, PXA-like or LGG-like, separated by *H3F3A* status. Time is given in months (x axis) and p value calculated by the log-rank test. (B) Kaplan-Meier plot of event-free and overall survival (y axis) of 24 midline *H3F3A_K27M* cases, separated by WHO grade. Time is given in months (x axis) and p value calculated by the log-rank test.

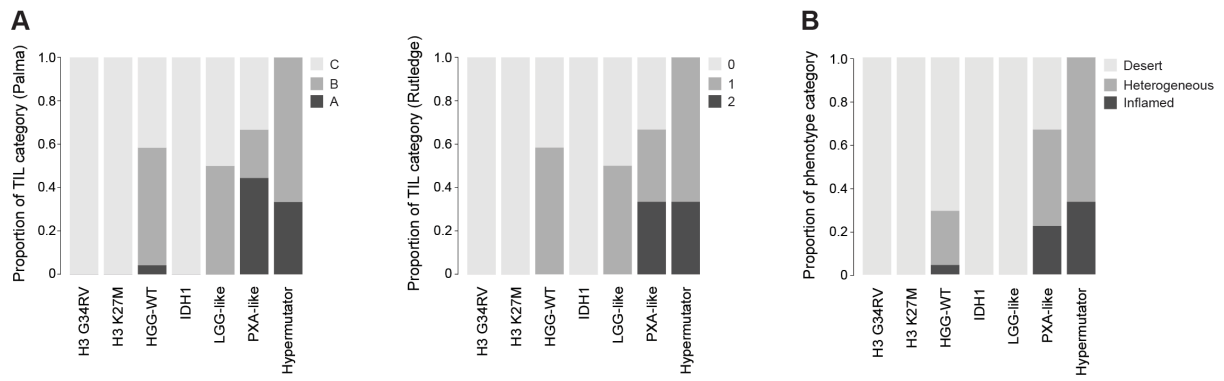


Figure S5 (related to Figure 5) – Immune profiling. (A) Barplot showing relative proportions of tumor-infiltrating lymphocytes categorized according to two schema (Palma and Rutledge), of 72 cases split by pHGG subgroups. (B) Barplot showing relative proportions of histologically defined immune phenotype of 72 cases, split by pHGG subgroups.

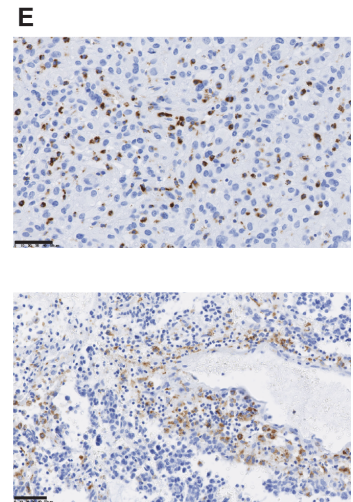
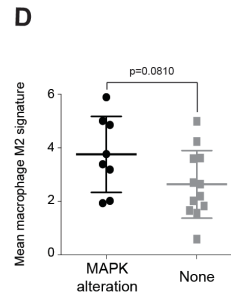
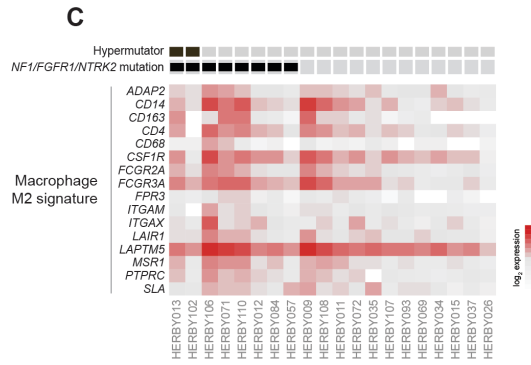
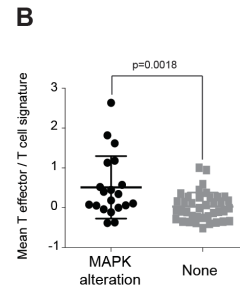
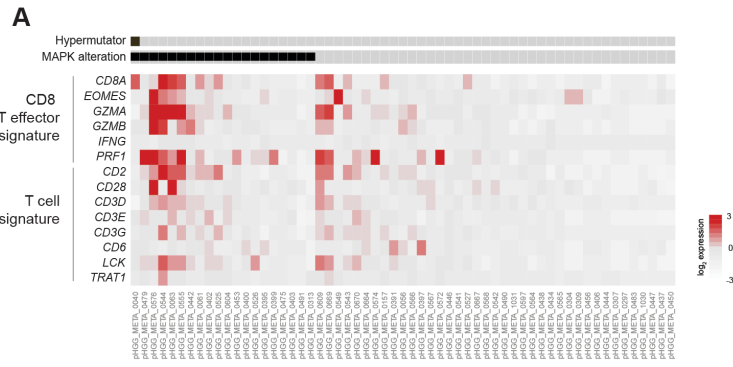
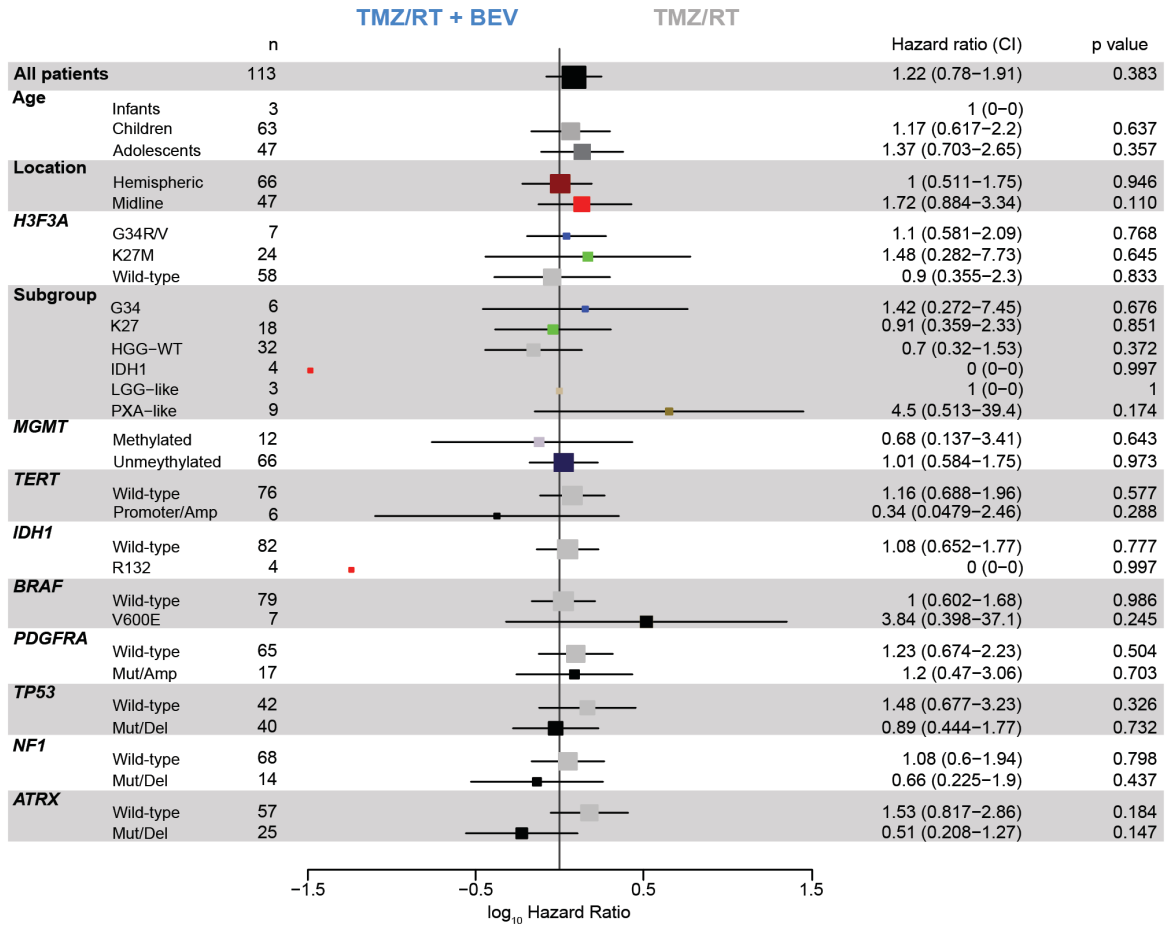
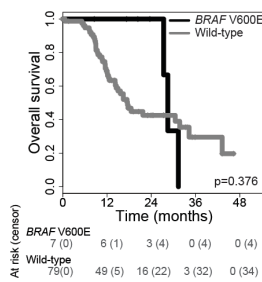
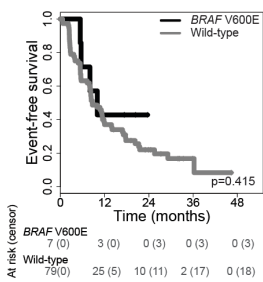


Figure S6 (related to Figure 7) – CD8 and CD68 signatures. (A) Gene expression signatures for CD8 T effector and T cells plotted as a heatmap from combined gene expression data of non-brainstem high-grade glioma in n=59 patients aged 3-18 years from Mackay *et al.*, 2017. Hypermutator cases and those with MAPK alterations are annotated. (B) Boxplot of T effector / T cell gene expression values in MAPK altered samples compared to those without. Horizontal bar represents the mean, error bars the standard deviation. (C) Gene expression signatures for M2 macrophages plotted as a heatmap from 20 cases with RNAseq data. Hypermutator cases and those with MAPK alterations are annotated. (D) Boxplot of M2 macrophage cell gene expression values in MAPK altered samples compared to those without. Horizontal bar represents the mean, error bars the standard deviation. (E) Immunohistochemistry directed against CD68, showing positive cells in perivascular areas associated with lymphocytes (top, HERBY104, hypermutator) and more diffusely mixed with tumor cells (bottom, HERBY102, *BRAF_V600E*). Scale bar = 50 μ m.

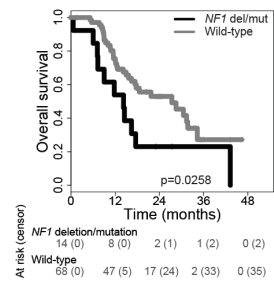
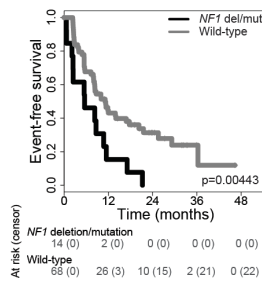
A



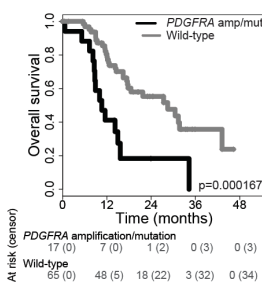
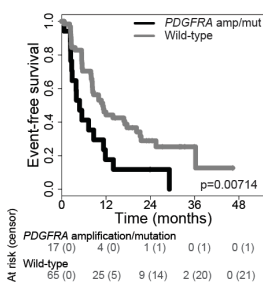
B



C



D



E

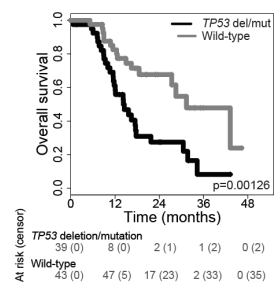
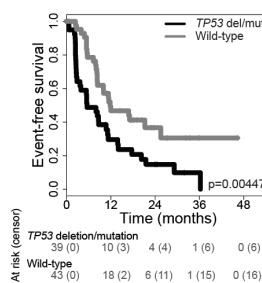


Figure S7 (related to Figure 7) – Exploratory biomarker analysis. (A) Hazard ratio plot for a univariate Cox regression analysis on a variety of molecular subgroups and alterations in respect of event-free survival. \log_2 hazard ratios less than zero indicate a better response to TMZ/RT plus BEV, ratios greater than zero a better response to TMZ/RT alone. Median (box) and 95% confidence intervals (whiskers) are plotted, with size of box proportion to sample size on an indicated category of tumors. (B-E) Kaplan-Meier plot of event-free and overall survival of cases (y axis) separated by *BRAF_V600E* (B), *NF1* (C), *PDGFRA* (D) and *TP53* (E) status, time given in months (x axis) and p value calculated by the log-rank test.