

Additional file 2

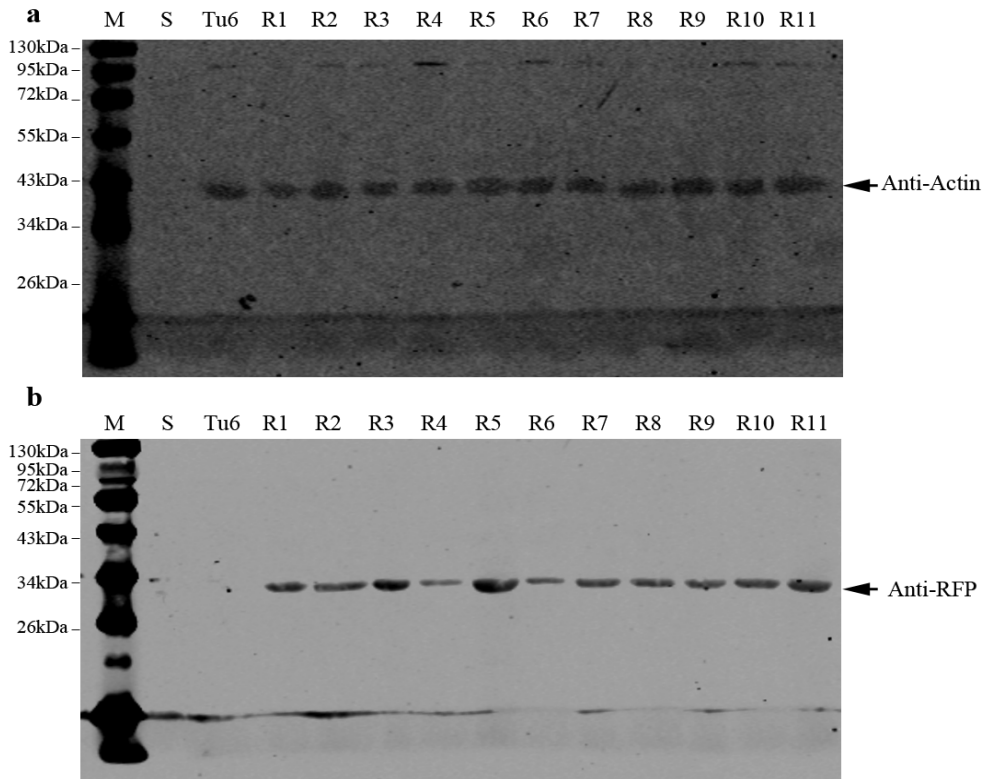


Figure S2: The raw data of the western blot analysis of the intracellular expression of beta-actin (a) and RFP (b) from the mycelia lysate. Protein samples were extracted from mycelia in 120 h cultures containing MM media with 1% Avicel as the carbon source from 24 well plates. M indicated the protein marker, S indicated the supernatant sample from the same culture.