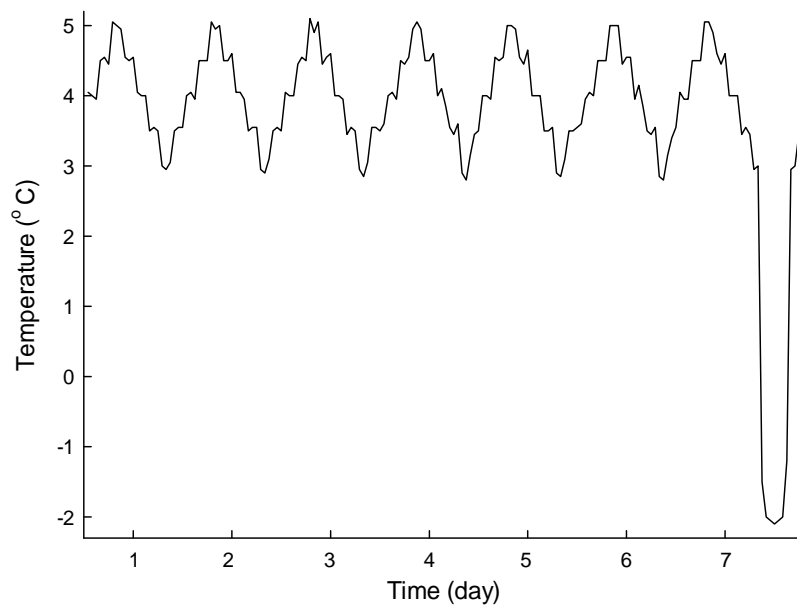


Supplementary materials

Discrete taxa of saprotrophic fungi respire different ages of carbon from Antarctic soils

Kevin K. Newsham, Mark H. Garnett, Clare H. Robinson & Filipa Cox



Supplementary Figure S1. Temperatures, recorded hourly with data loggers (Tinytag Plus 2, TGP 4017, Gemini data Loggers, Chichester, UK), to which the soils were exposed.

Supplementary Table S1. ^{14}C enrichment, radiocarbon age and $\delta^{13}\text{C}_{\text{VPDB}}$ of CO_2 sampled from microcosms.

Island	Fungal taxon	Radiocarbon publication code	^{14}C enrichment (%Modern $\pm 1\sigma$)	Conventional radiocarbon age (years BP $\pm 1\sigma$)	$\delta^{13}\text{C}_{\text{VPDB}}$ ($\% \pm 0.1$)
Signy	<i>Helotiales</i> sp. 1	SUERC-63963	93.39 \pm 0.43	549 \pm 37	-21.9
Signy	<i>Helotiales</i> sp. 1	SUERC-63955	92.17 \pm 0.43	655 \pm 37	-22.0
Signy	<i>Helotiales</i> sp. 1	SUERC-63966	93.60 \pm 0.43	531 \pm 37	-21.3
Signy	<i>M. turficola</i>	SUERC-63960	96.36 \pm 0.44	298 \pm 37	-22.8
Signy	<i>M. turficola</i>	SUERC-63962	96.46 \pm 0.44	289 \pm 37	-22.8
Signy	<i>M. turficola</i>	SUERC-63944	97.89 \pm 0.45	171 \pm 37	-21.1
Signy	<i>M. turficola</i>	SUERC-63971	98.18 \pm 0.45	148 \pm 37	-21.1
Signy	<i>Pseudogymnoascus roseus</i>	SUERC-63953	97.68 \pm 0.45	189 \pm 37	-23.8
Signy	<i>P. roseus</i>	SUERC-63965	98.35 \pm 0.45	134 \pm 37	-23.7
Signy	<i>P. roseus</i>	SUERC-63954	97.54 \pm 0.45	200 \pm 37	-23.5
Léonie	<i>Helotiales</i> sp. 1	SUERC-63951	86.43 \pm 0.40	1171 \pm 38	-22.6
Léonie	<i>Helotiales</i> sp. 1	SUERC-63943	87.82 \pm 0.41	1043 \pm 37	-23.0
Léonie	<i>Helotiales</i> sp. 1	SUERC-63950	90.27 \pm 0.42	822 \pm 37	-21.6
Léonie	<i>Rhizoscyphus</i> sp.	SUERC-63970	92.83 \pm 0.43	597 \pm 37	-23.3
Léonie	<i>Rhizoscyphus</i> sp.	SUERC-63952	92.46 \pm 0.43	629 \pm 37	-23.0
Léonie	<i>Rhizoscyphus</i> sp.	SUERC-63946	92.86 \pm 0.43	595 \pm 37	-23.5
Léonie	<i>Mortierella turficola</i>	SUERC-63961	91.89 \pm 0.42	679 \pm 37	-24.1
Léonie	<i>M. turficola</i>	SUERC-63964	92.82 \pm 0.41	599 \pm 35	-24.8
Léonie	<i>M. turficola</i>	SUERC-63945	90.67 \pm 0.42	786 \pm 37	-24.5
Léonie	<i>M. turficola</i>	SUERC-63956	93.29 \pm 0.43	558 \pm 37	-23.3