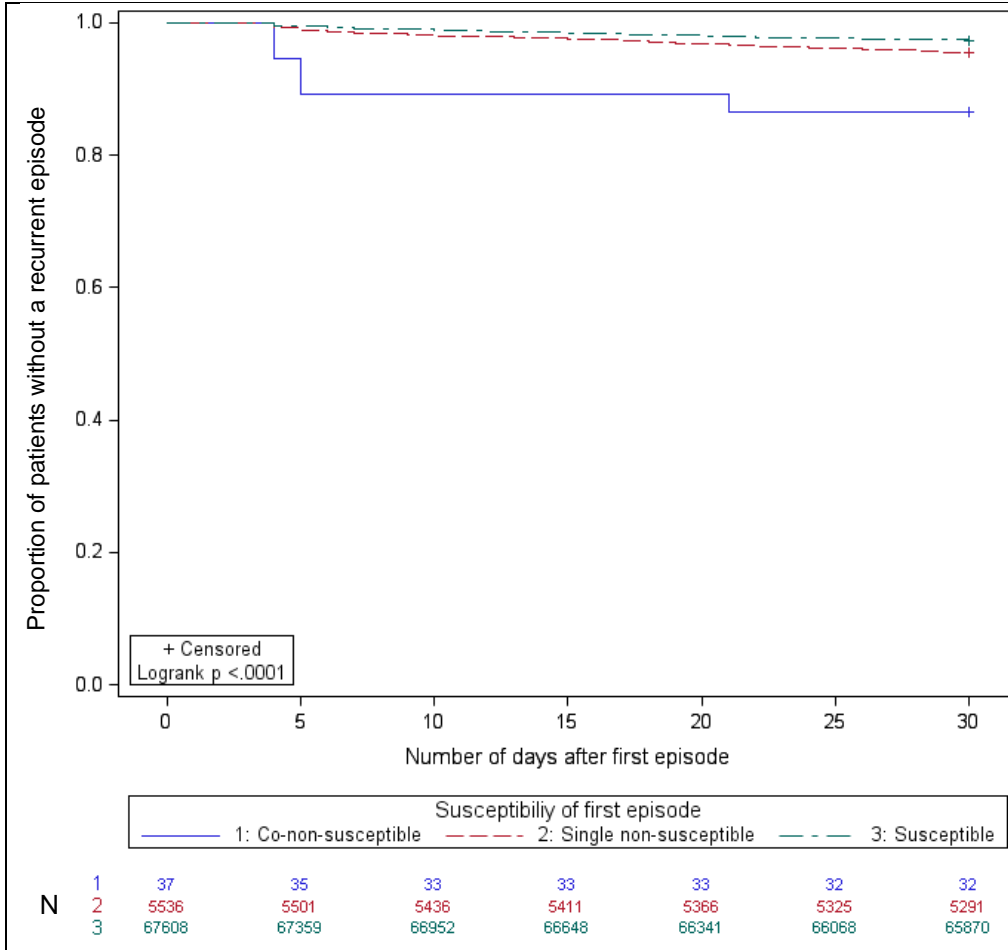
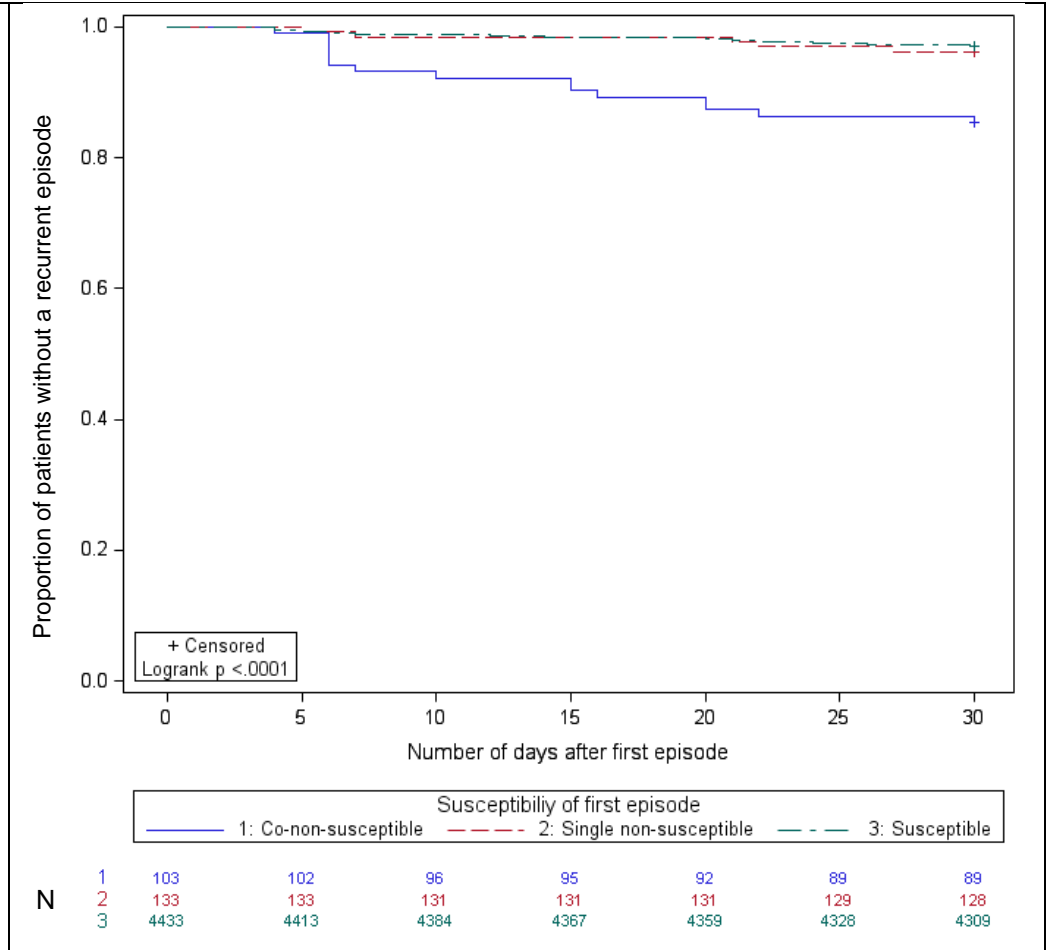


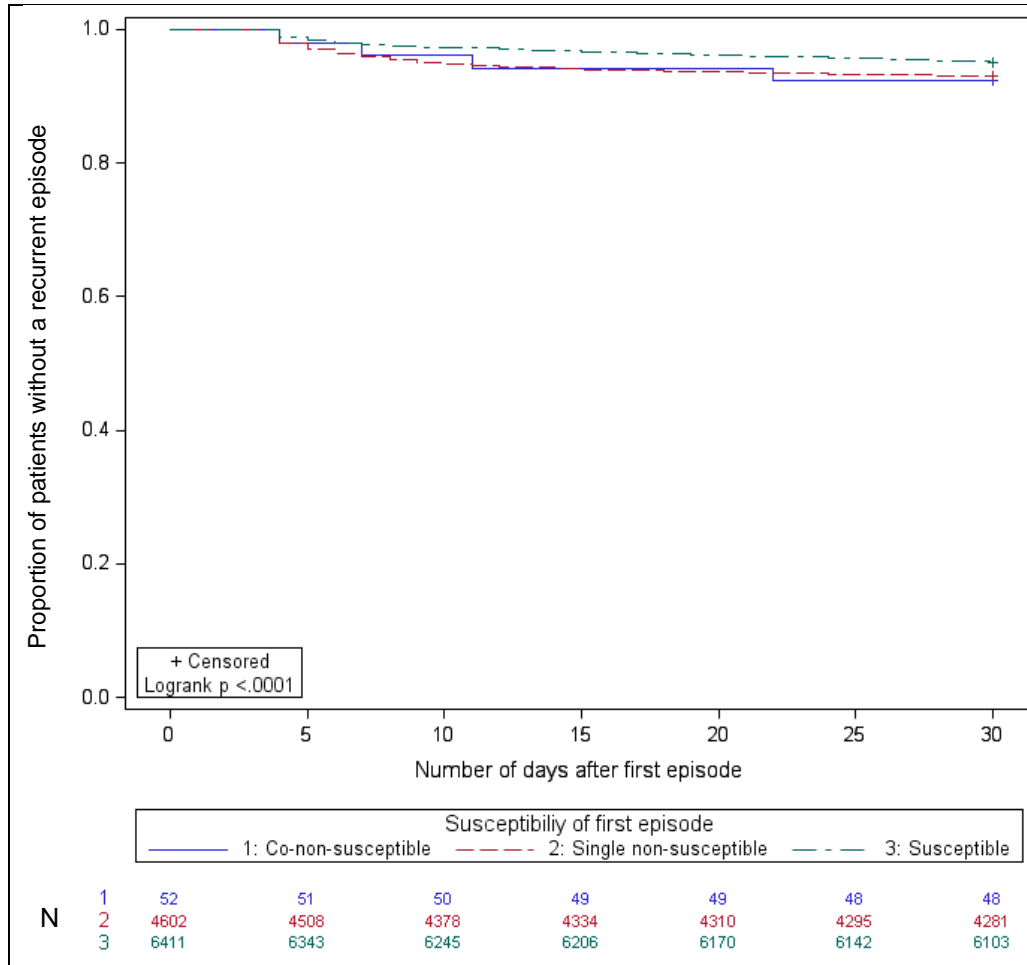
A. Enterobacteriaceae



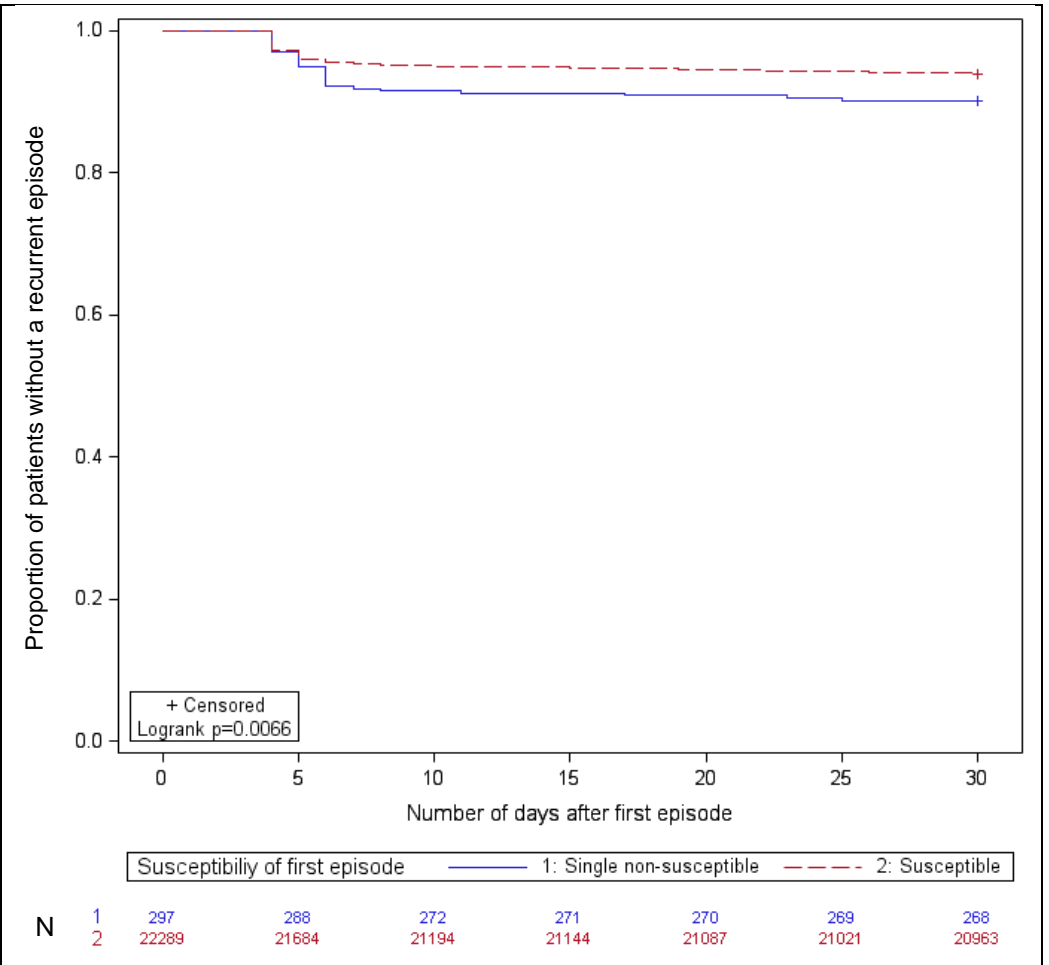
B. Pseudomonas spp.



C. *Enterococcus* spp.



D. *S. aureus*



Supplementary figure 1. Kaplan-Meier curves displaying the proportion of patients without a recurrent episode of bacteremia, by pathogen group and susceptibility category of the first episode. (A) Enterobacteriaceae, (B) *Pseudomonas* spp., (C) *Enterococcus* spp., (D) *S. aureus*. N: number of patients at risk. A recurrent episode was defined as a positive blood culture between 4 and 30 days after the first episode, and observations were therefore censored at 30 days of follow-up.