

# Inducible high-efficiency CRISPR-Cas9-targeted gene editing and precision base editing in African trypanosomes

Eva Rico, Laura Jeacock, Julie Kovářová and David Horn

Supplementary Information.

Supplementary Figures 1-2.

Uncropped gel and blots for Fig. 1.

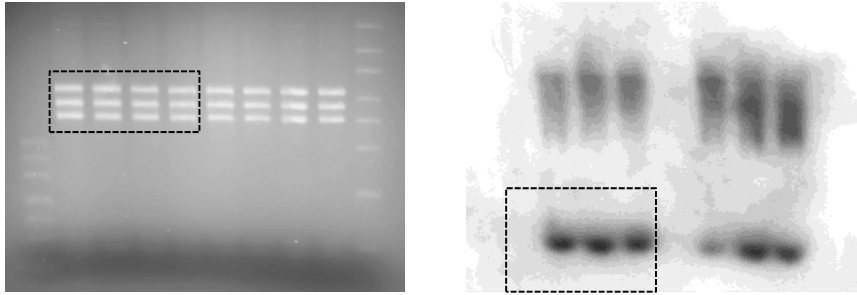
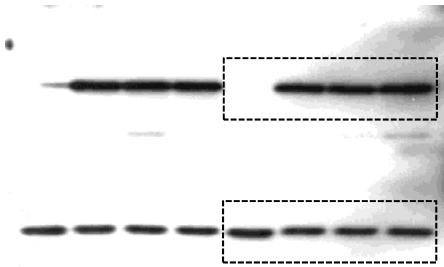
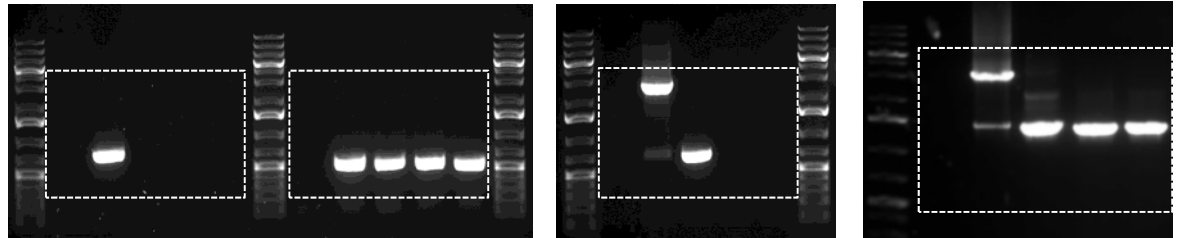


Fig. 1b.

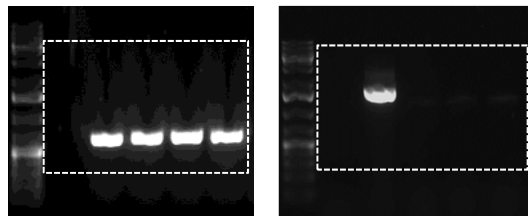
Fig. 1e.



Uncropped gels for Fig. 2c.



Uncropped gels for Fig. 3c.



Uncropped gels for Fig. 4.

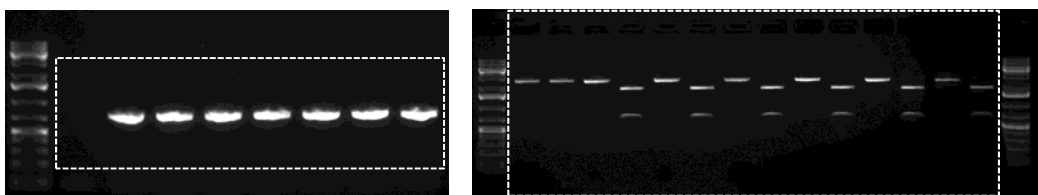
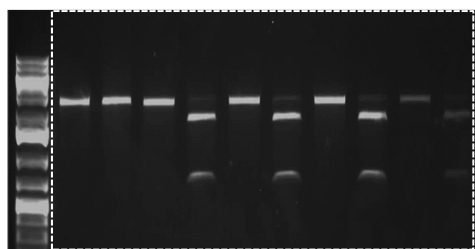
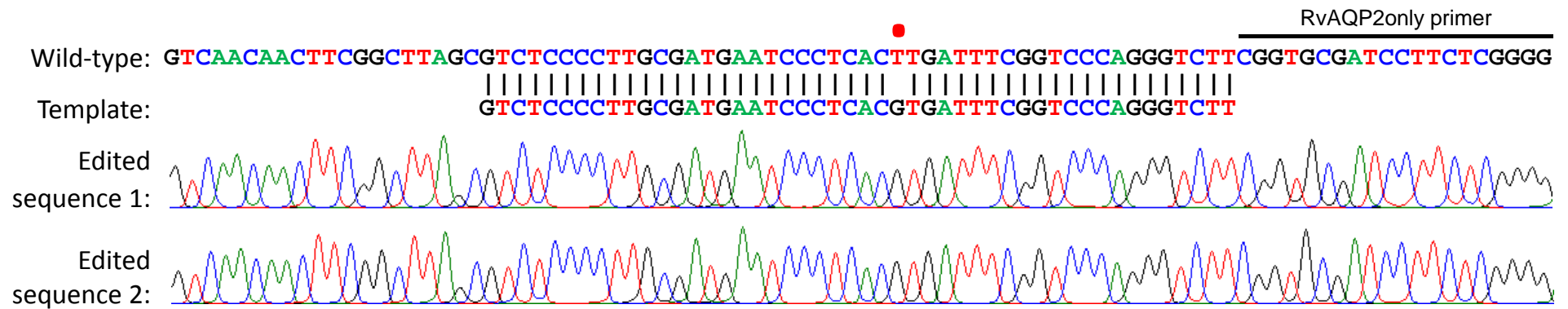


Fig. 4c.

Fig. 4d.



**Supplementary Fig. 1.** All uncropped gels and blots are shown for Figures 1-4. The areas shown in Figures 1-4 are indicated by dashed boxes. Data for a second clone are also shown in the Fig. 1 panels.



**Supplementary Figure 2.** Extended sequence traces from Fig 4b and for two independent clones, showing only the precision T<sup>79</sup>G edit and no additional changes in the template or flanking regions. The location of one of the primers used to amplify fragments for sequencing is indicated.