

Figure S1. Representative images show cross sections of posterior eye isolated from Col1 α 1-GFP mice. Samples were immunostained with antibodies against Iba1, CD13, GFAP and RPE65 (n=5). All samples were counter-stained with DAPI (blue), GFP antibodies (green) and the third antibody (red) as shown. Scale bars: 100 μ m.

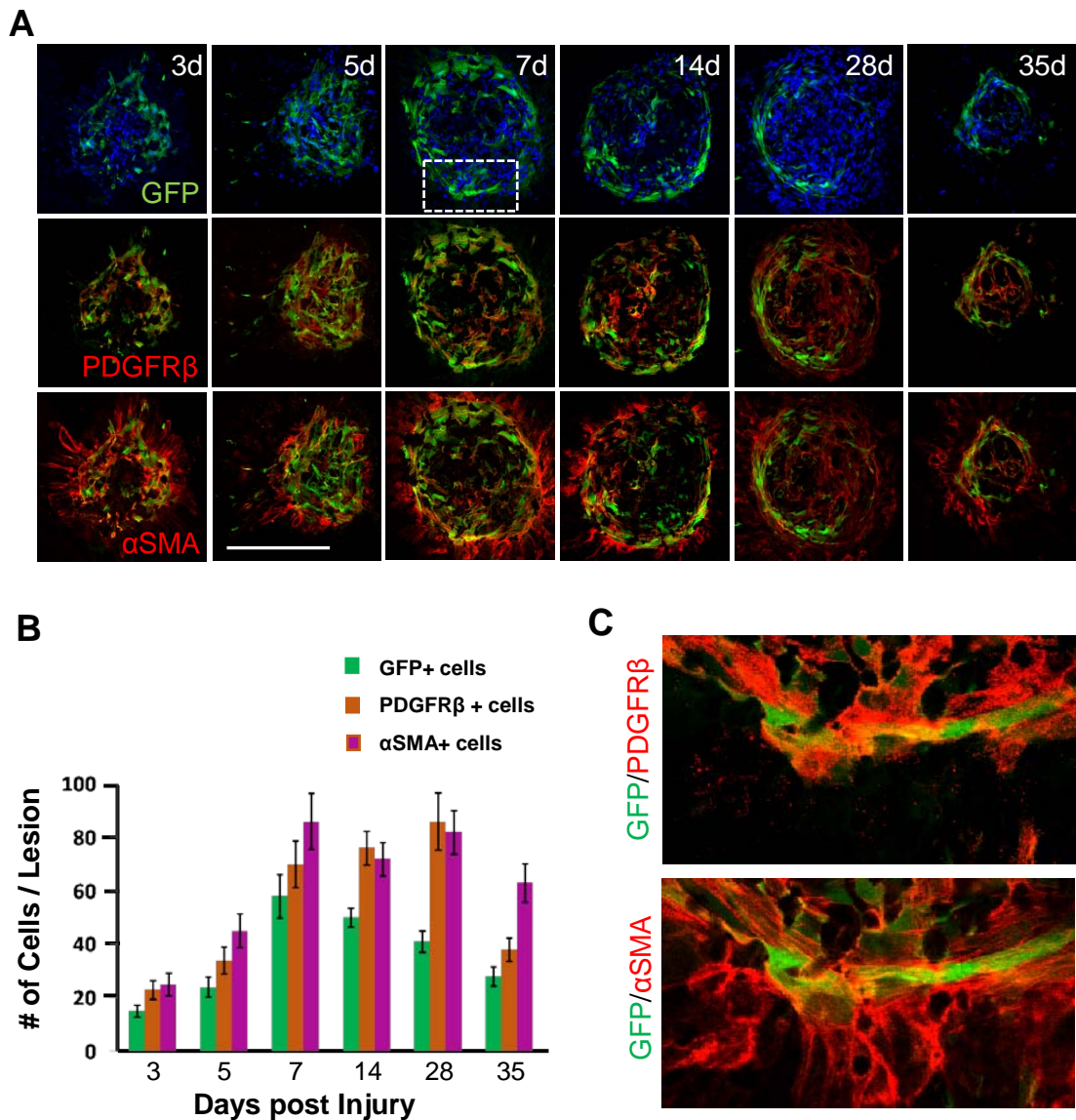


Figure S2. GFP-positive cells express PDGFR β and α SMA. A, B: The time course of GFP, PDGFR β and α SMA-positive cell distribution in subretinal space after laser-induced photocoagulation ($n > 10$). C: GFP-positive cells are immunoreactive with antibodies against PDGFR β and α SMA. Scale bars: 100 μ m.

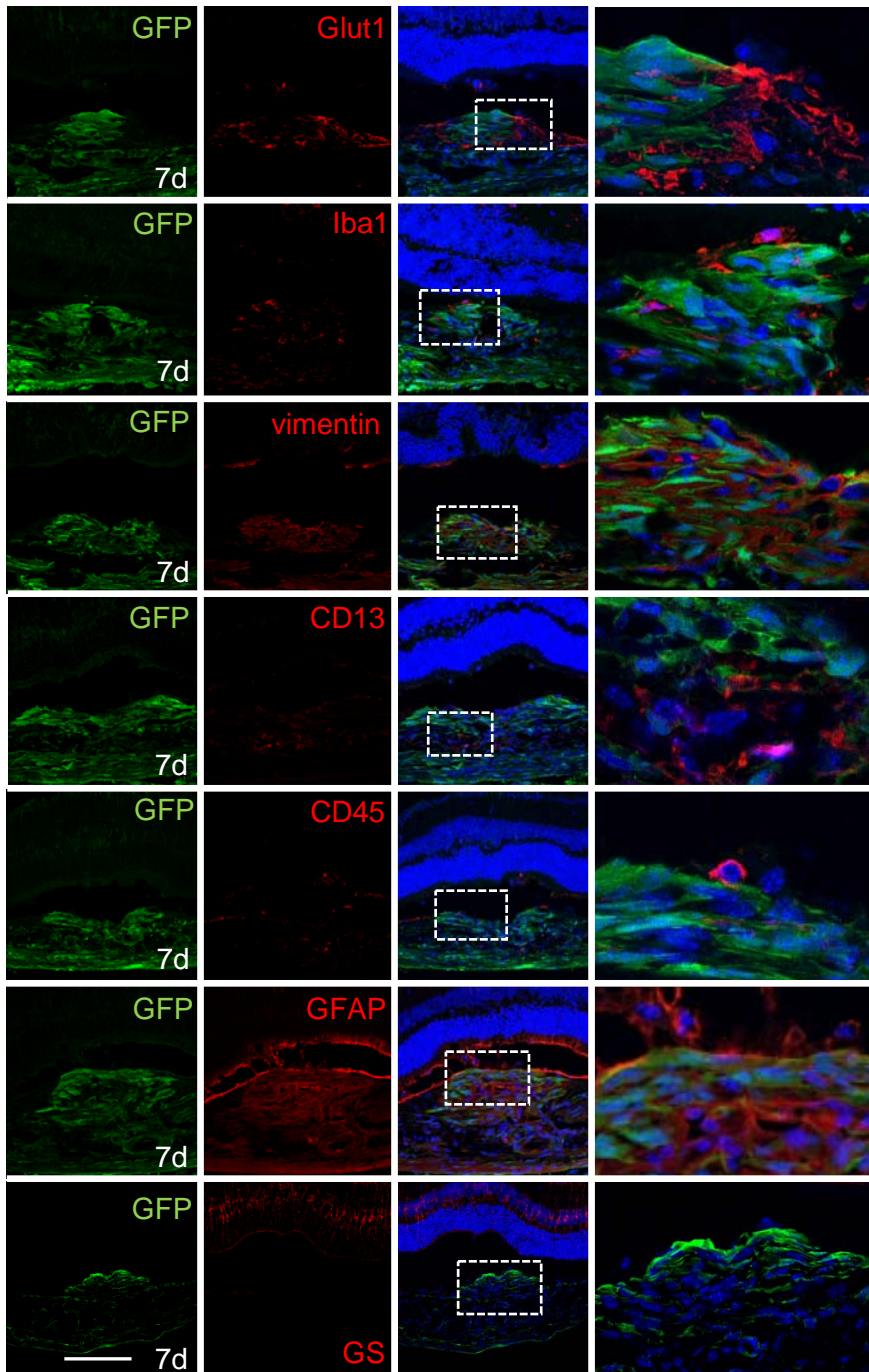


Figure S3. Representative images show cross sections of posterior eye isolated from Col1 α 1-GFP mice at 7 dpi. Samples with laser-induced lesions were immunostained with antibodies against Glut1, Iba1, vimentin, CD13, CD45, GFAP or glutamine synthetase (GS). All samples were counter-stained with DAPI (blue), GFP antibodies (green) and the third antibody (red) as shown (n=5). Scale bars: 100 μ m.

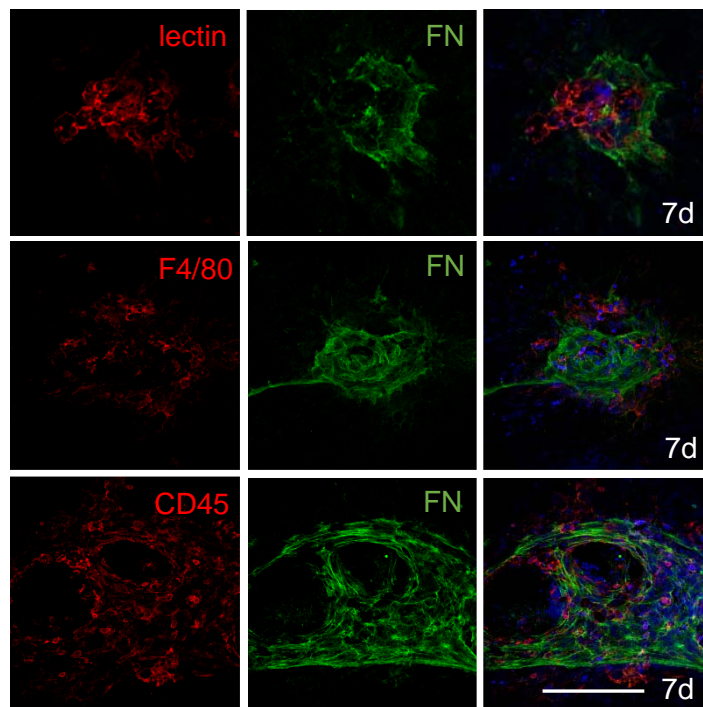


Figure S4. Representative images show flat-mounted RPE-choroid complexes isolated from wild type mice at 7 dpi. Samples with laser-induced lesions were immunostained with antibodies against fibronectins (FN), F4/80, CD45 or lectins. All samples were counter-stained with DAPI (blue) (n=5). Scale bars: 100 μ m.