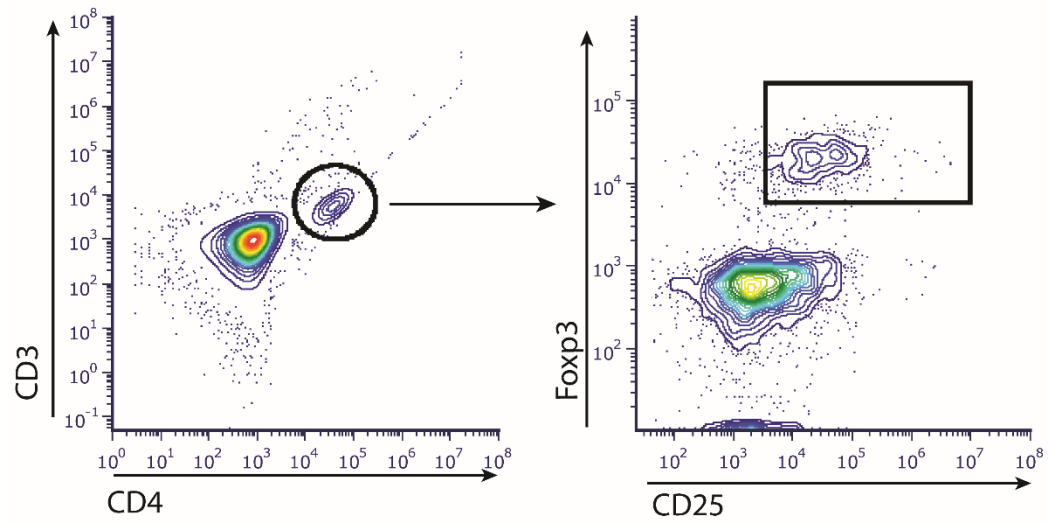


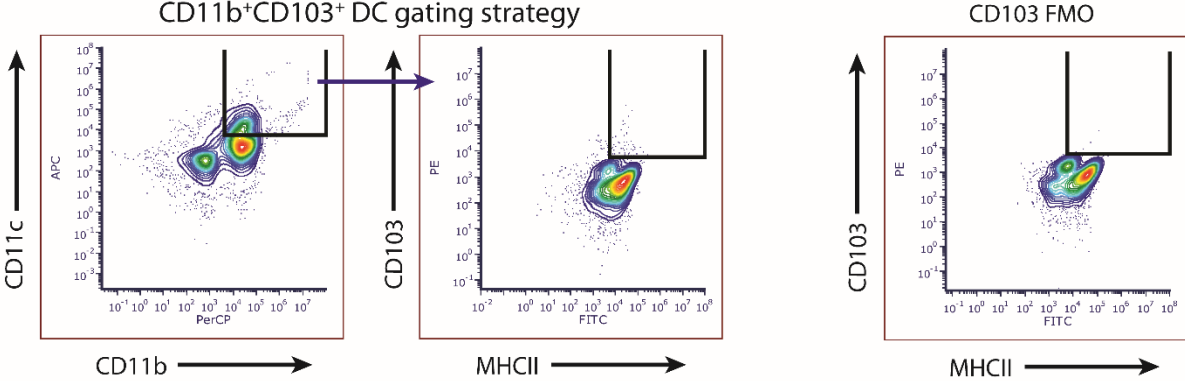
Supplemental Figure 1



Supplemental Figure 1 Treg gating strategy

Cells were first gated on CD3⁺CD4⁺ and then Foxp3⁺CD25⁺.

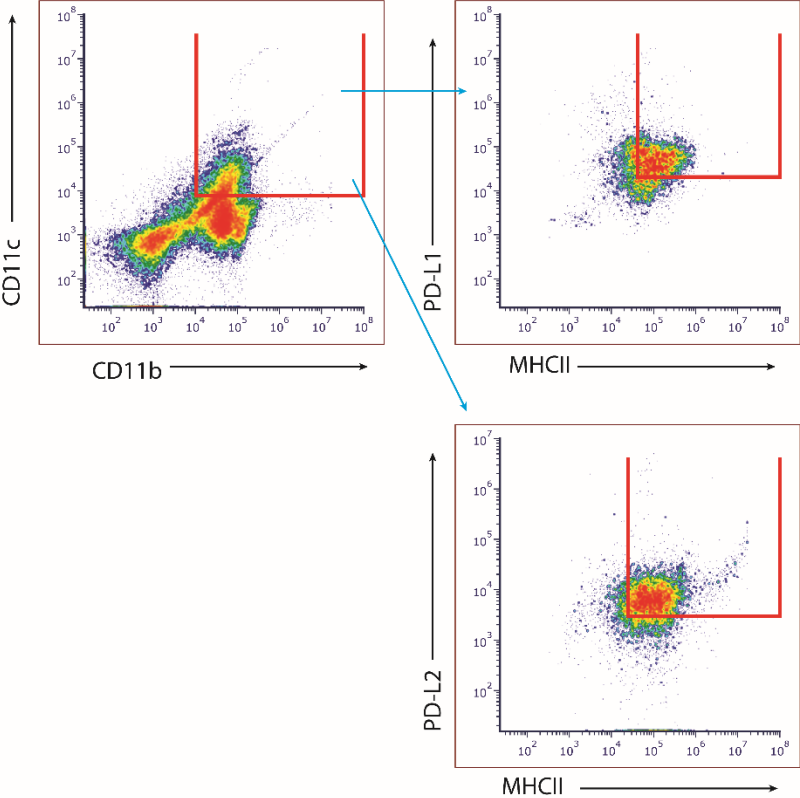
Supplemental Figure 2



Supplemental Figure 2 CD11b⁺CD103⁺ DC gating strategy

Cells were gated on first on CD11c⁺CD11b⁺ and then MHCII⁺CD103⁺. CD103 FMO is shown on right.

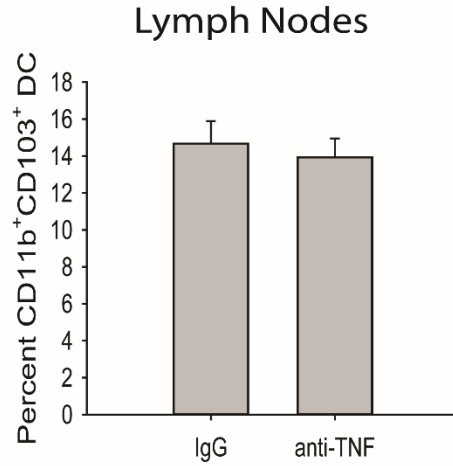
Supplemental Fig 3



Supplemental Figure 3: PD-L1 and PD-L2 DC gating strategy

Cells were gated on first on CD11c⁺CD11b⁺ and then MHCII⁺PD-L1⁺ or MHCII⁺PD-L2⁺.

Supplemental Figure 4



Supplemental Figure 4 CD11b⁺CD103⁺ DCs are present in lung draining lymph nodes

Mice were infected with 2×10^6 *H. capsulatum* yeasts i.n. and treated with anti-TNF or isotype control antibody. Lymph nodes were harvested a day 3 p.i. and DCs were assessed by flow cytometry. Figure represents the mean \pm SEM (n=8 mice/group; representative of two experiments).