

Supplementary Figure S1

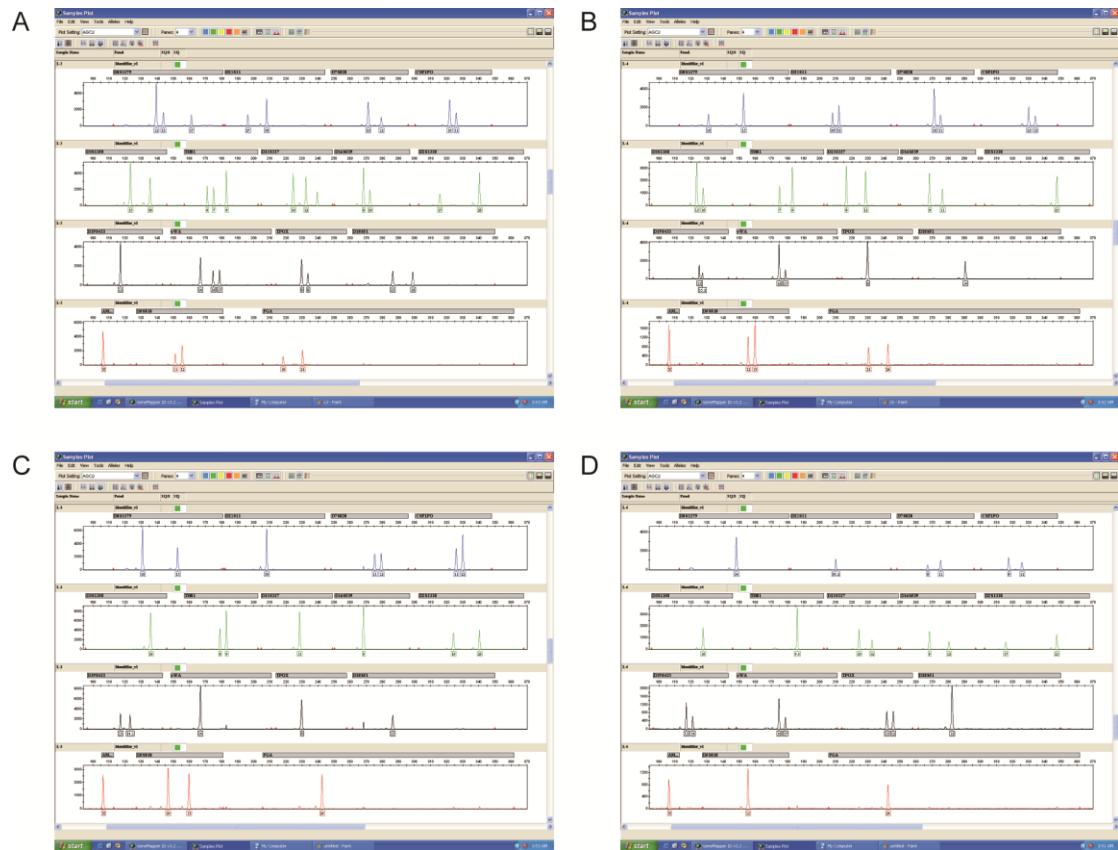


Figure S1: The results of cell line STR genotype. A, B, C, D represents for EC109, KYSE150, KYSE450 and Het-1A respectively.

Supplementary Figure S2

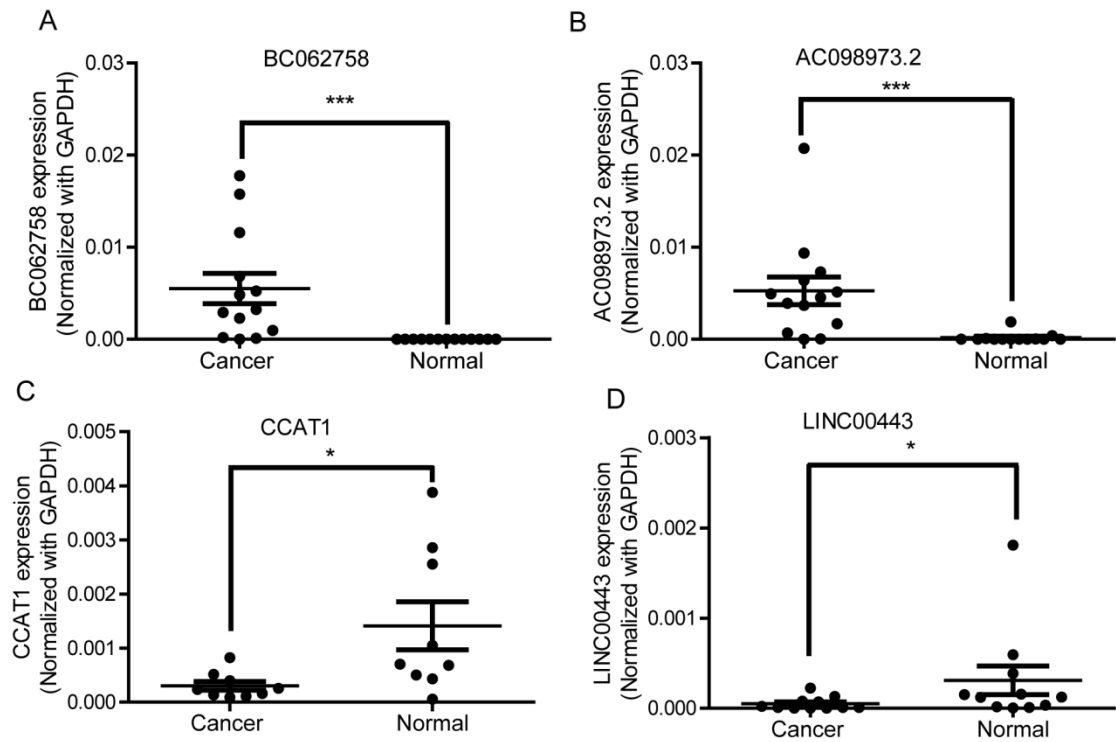


Figure S2: qRT-PCR confirmed the results of microarray. (A, B) LncRNA BC062758 and AC098973.2 were upregulated in ESCC tissues compared with normal tissues detected by microarray analysis and qRT-PCR; (C, D) LncRNA CCAT1 and LINC00443 were downregulated in ESCC tissues compared with normal tissues detected by microarray analysis and qRT-PCR.

Supplementary Figure S3

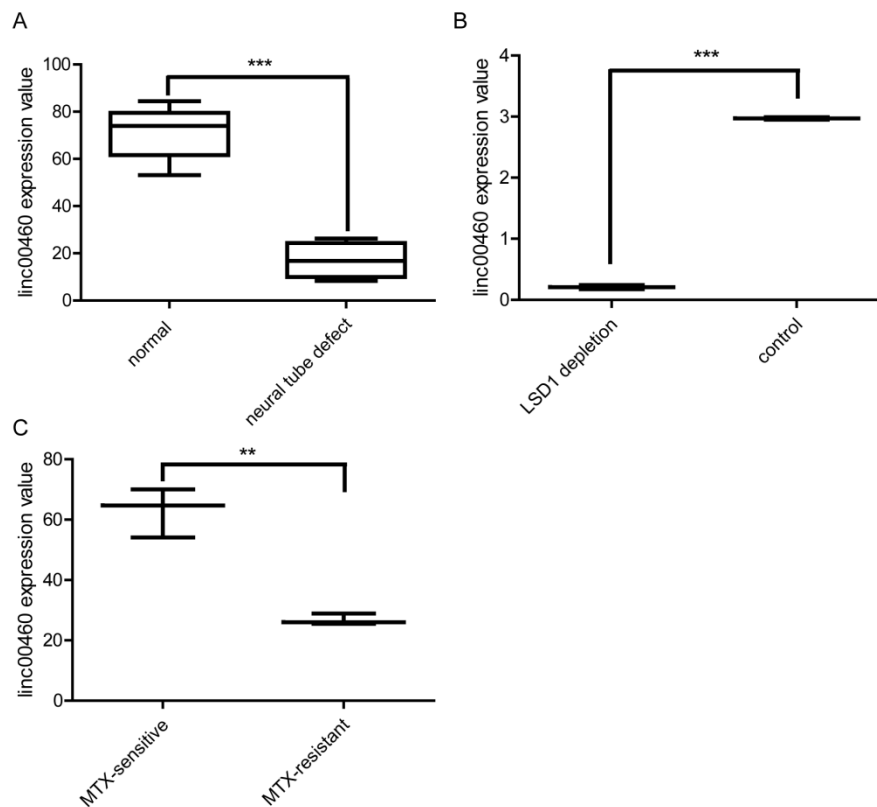


Figure S3. linc00460 expression in different status from GEO Profiles.

A.linc00460 expression is significantly lower in Neural tube defect patient than normal (GDS2470);

B.linc00460 expression is decreased when knockdown LSD1 in neuroblastoma cell lines (GDS5281);

C.MTX-sensitive HT29 colon adenocarcinoma cell line present higher linc00460 expression than MTX-resistant HT29 colon adenocarcinoma cell line (GDS3330).

Supplementary Figure S4

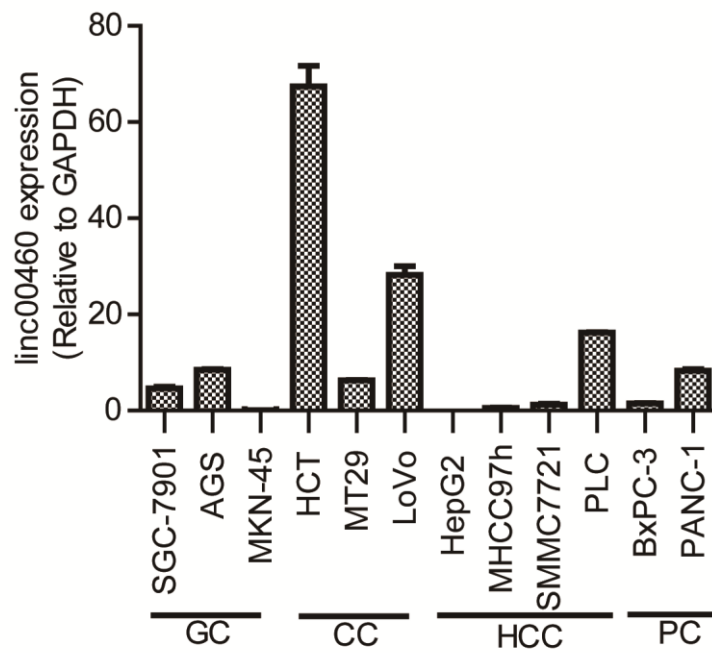


Figure S4: Linc00460 expression of some other cancer cell lines of digestive system detected by qRT-PCR.

GC: gastric cancer, including SGC-7901, AGS, MKN-45;

CC: colon cancer, including HCT, MT29, LoVo;

HCC: hepatocellular carcinoma, including HepG2, MHCC97h, SMMC7721, PLC;

PC: pancreatic cancer, including BxPC-3, PANC-1.

Supplementary Table S1

Table S1: Sequences of qRT-PCR primers

qRT-PCR primers	Sequences 5'-3'	PCR product length
GAPDH-F	GGGAGCCAAAAGGGTCATCA	203bp
GAPDH-R	TGATGGCATGGACTGTGGTC	
Linc00460-F	GGGGACCGAGACCTATGAGA	179bp
Linc00460-R	GAAAGCTGCAACATGCTCCC	
CBP-F	GTGCTGGCTGAGACCCTAAC	125bp
CBP-R	GGCTGTCCAAATGGACTTGT	
P300-F	CAATGAGATCCAAGGGGAGA	151bp
P300-R	ATGCATCTTTCTTCCGCACT	
CHIP-qPCR primer	Sequences 5'-3'	PCR product length
Linc00460-F	GGGGACTCATCTCCTCAAACC	74bp
Linc00460-R	CATGGCACTTCCGTCACCTC	

Supplementary Table S2

Table S2: siRNA sequences

linc00460 siRNAs	Sequences 5'-3'	siRNA length
si-linc00460-1	CUCCA GCCCU GUUAG AAAUTT	21nt
si-linc00460-2	GGUAC CCAGA CAUUG UUAUTT	21nt
si-linc00460-3	CCAGA UAAGU GCCCG AAUATT	21nt
CBP siRNAs	Sequences 5'-3'	siRNA length
si-CBP-1	CGGCA CAGCC TCTCA GTCA	19nt
si-CBP-2	GGAGC CATCT AGTGC ATAA	19nt
si-CBP-3	GGAAC TAGAA CAAGA AGAA	19nt
P300 siRNAs	Sequences 5'-3'	siRNA length
si-P300-1	GCACG AACTA GGAAA GAAA	19nt
si-P300-2	CGACT TACCA GATGA ATTA	19nt
si-P300-3	GCACA AATGT CTAGT TCTT	19nt