

Supplementary Information

C151 in KEAP1 is the main cysteine sensor for the cyanoenone class of NRF2 activators, irrespective of molecular size or shape

Sharadha Dayalan Naidu, Aki Muramatsu, Ryota Saito, Soichiro Asami, Tadashi Honda, Tomonori Hosoya, Ken Itoh, Masayuki Yamamoto, Takafumi Suzuki, and Albena T. Dinkova-Kostova

This figure contains all full-length blots.

FIG 2A

Nrf2

HA

a-tubulin

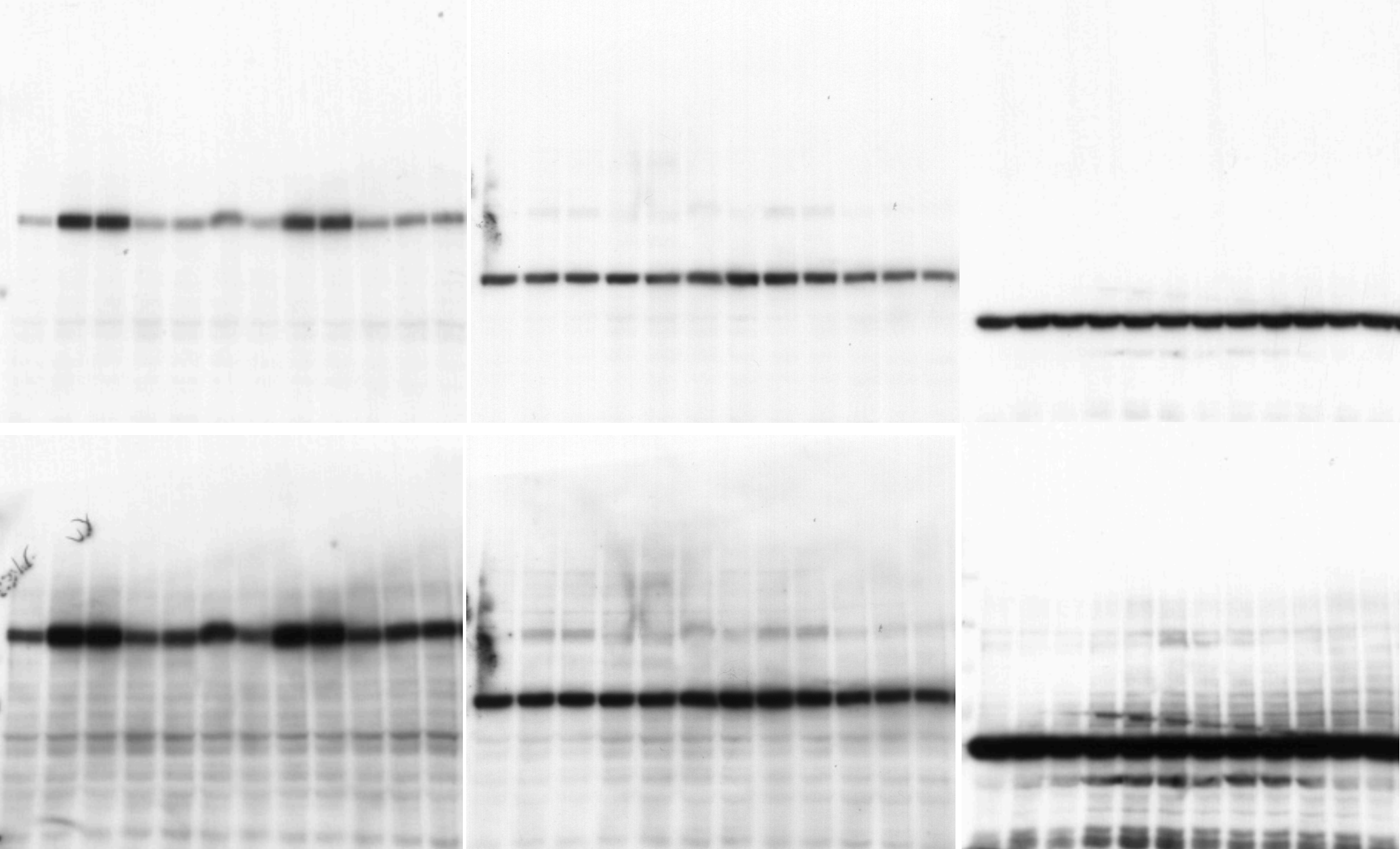


FIG 2B

Nrf2

HA

a-tubulin

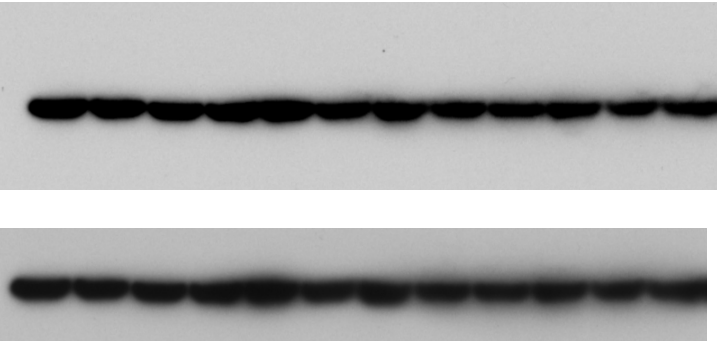
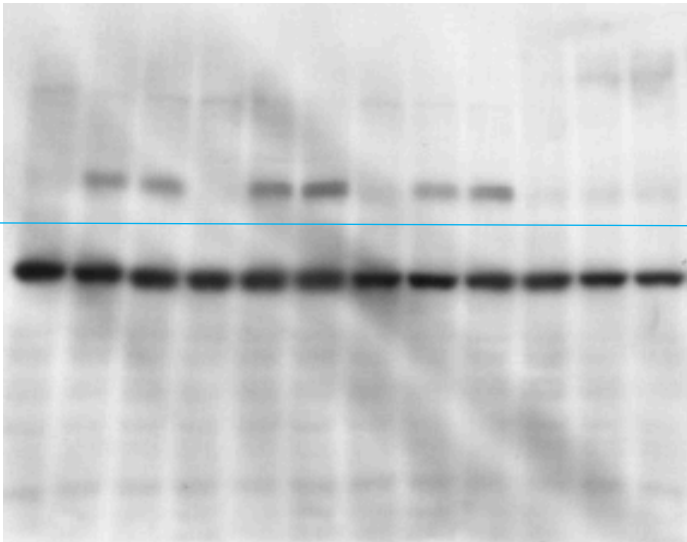
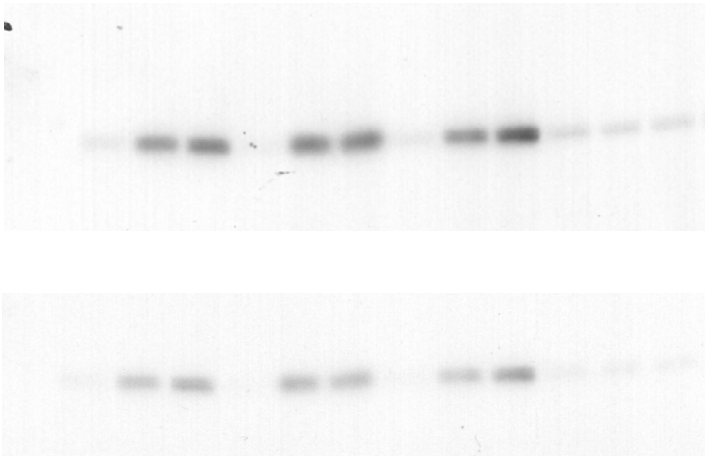


FIG 3A

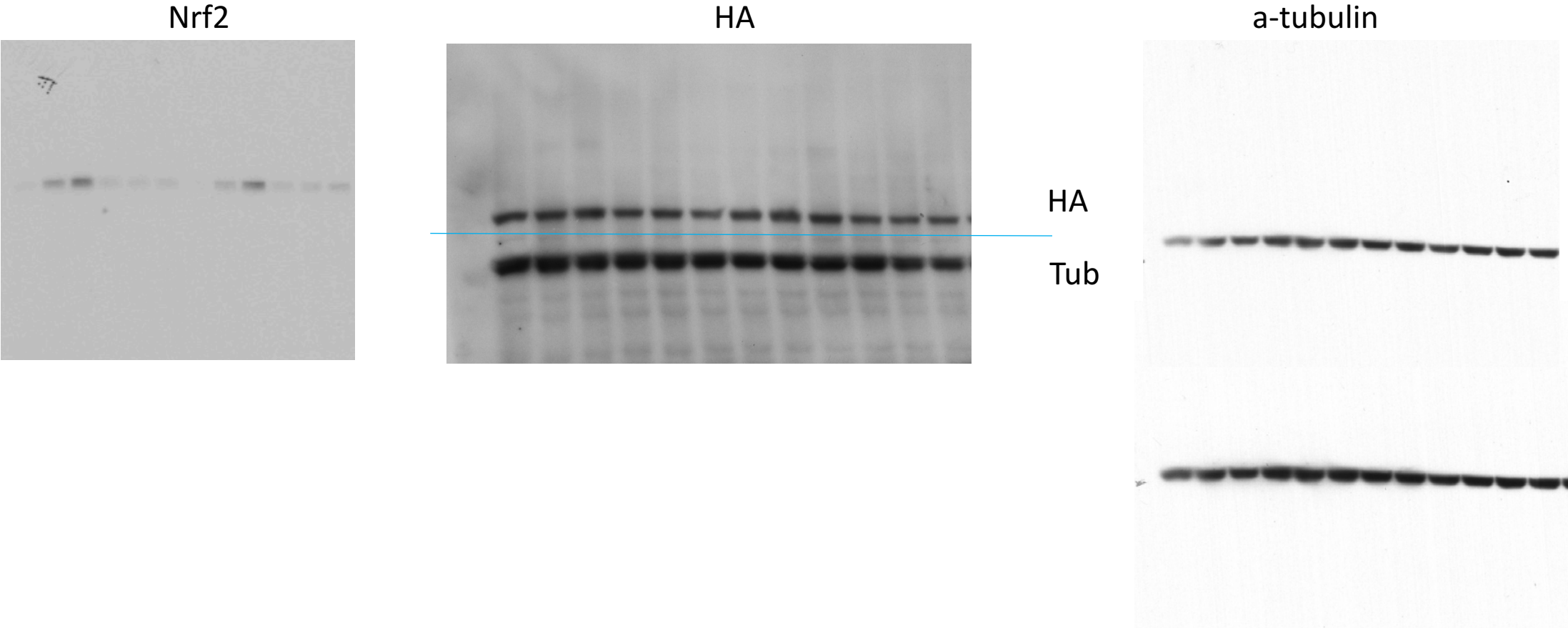
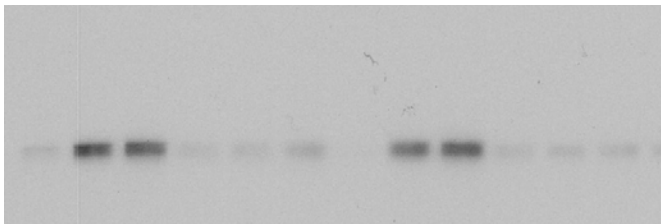
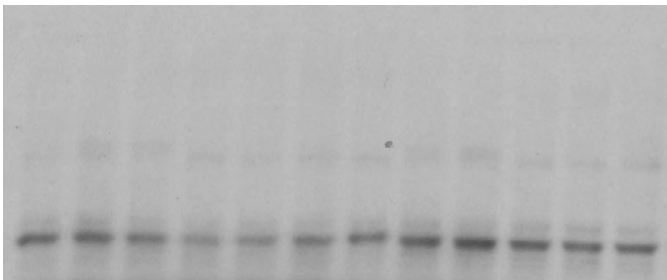


FIG 3B

Nrf2



HA



a-tubulin

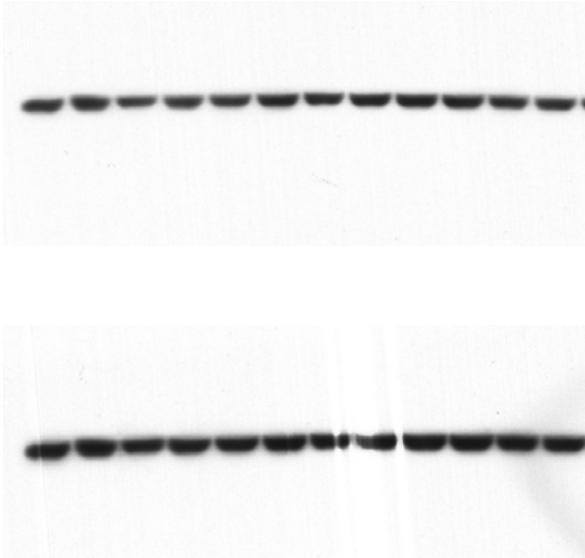
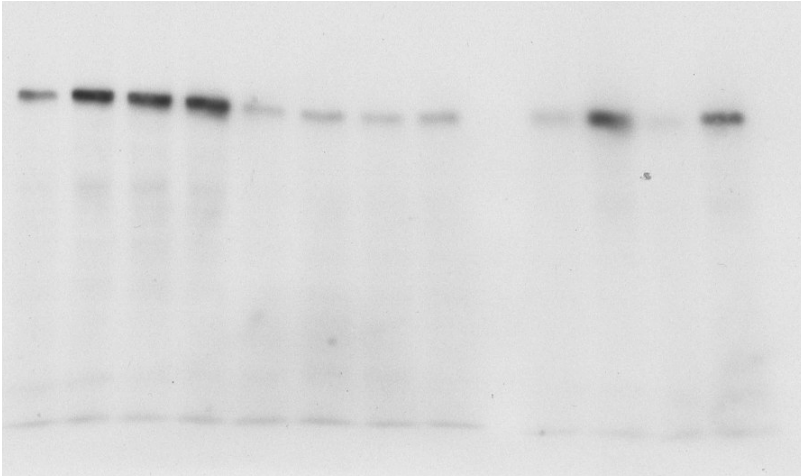
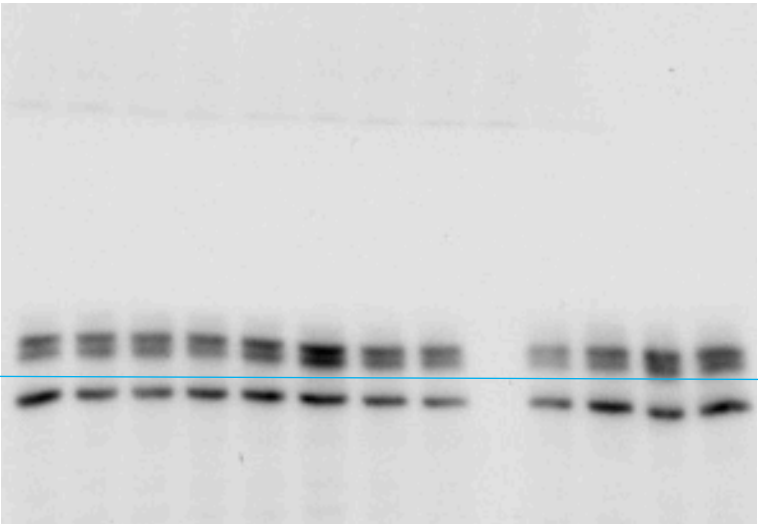
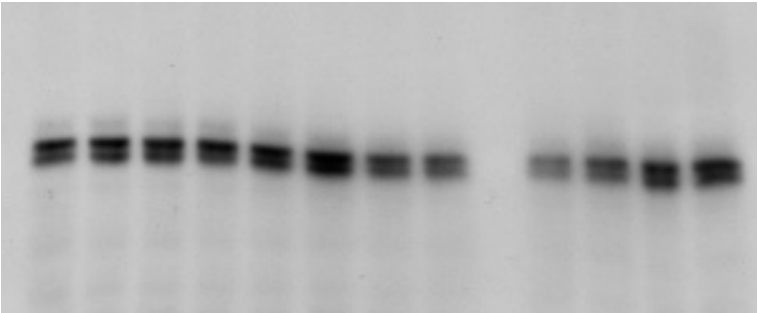


FIG 4A

Nrf2



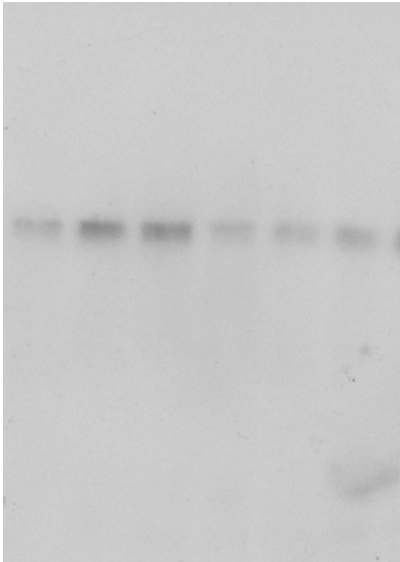
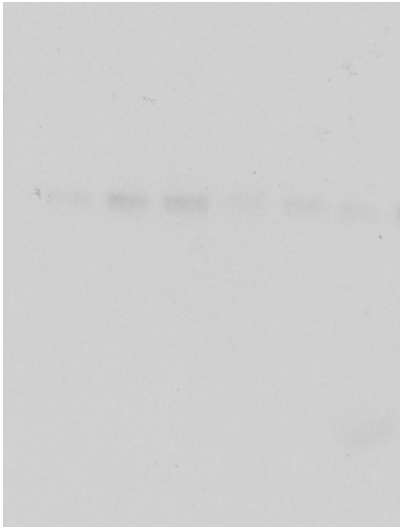
Keap1



Keap1

FIG 4B

Nrf2



Keap1

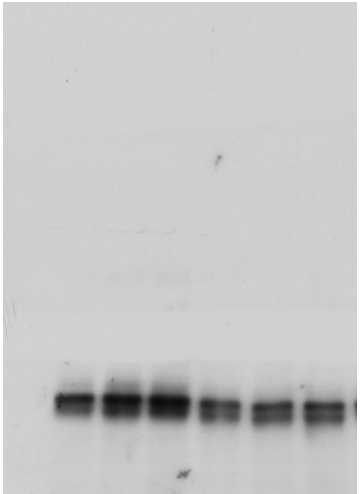
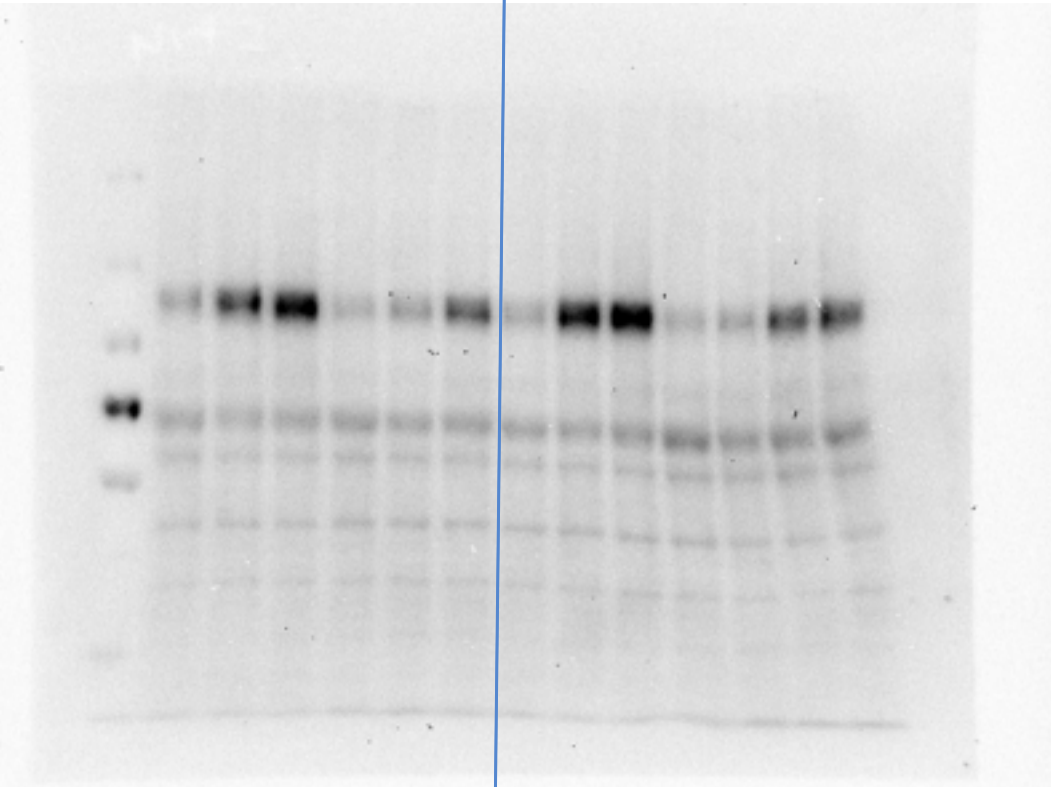


FIG 5A

Nrf2



a-tubulin

