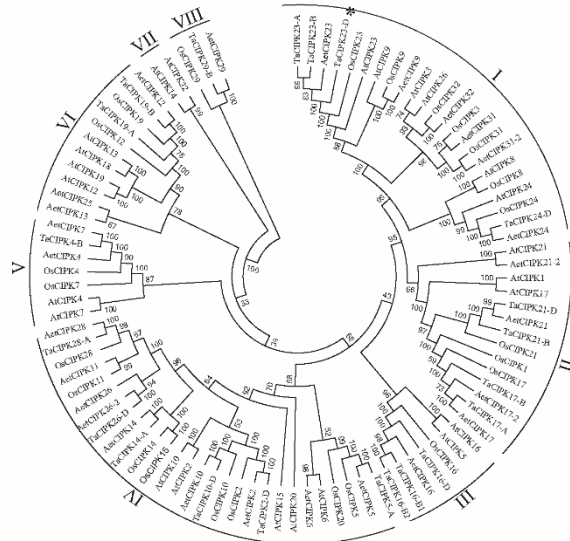


Wheat CBL-interacting protein kinase 23 positively regulates plant drought stress and ABA responses

Xiao-Yu Cui ^{1 †}, Yong-Tao Du ^{1 †}, Jin-Dong Fu ¹, Tai-Fei Yu ¹, Chang-Tao Wang ², Ming Chen ¹, Jun Chen ¹, You-Zhi Ma ^{1 *}, Zhao-Shi Xu ^{1 *}

Figure S1



FigureS2

Figure S2

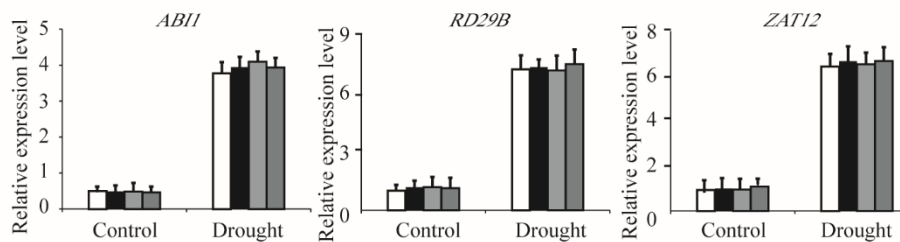


Table S1

Gene	Forward Primer	Reverse Primer
<i>P5CS</i>	GAAGGACTTACAACGAGATGGA	CTCTCCTCAAGTCTCAACCAATAC
<i>NCED3</i>	CAGCTTGTAGCTTTTGGGCTGTA	TAACAGAAACCAGCTGAGCTCGA
<i>RAB18</i>	GCAACTCCACAAGGAAAGTGGT	TGATGACCTGGCAACTTCTCC
<i>RD29A</i>	GGCGTAACAGGTAAACCTAGAG	TCCGATGTAAACGTCGTCC
<i>DREB1A</i>	TCTCTGAACCAGAGTCGTTT	CTTCTTCTACCGTCTTTCAC
<i>COR47</i>	GGAGTACAAGAACAACGTTCCCGA	TGTCGTCGCTGGTGATTCTCT
<i>KIN1</i>	AACAAGAATGCCTTCCAAGC	CGCATCCGATACACTCTTTCC
<i>ZAT12</i>	GTCACAAGAAGCCTAACAACGA	ACTCAGATCCAACAAGCCAC
<i>RD22B</i>	ATACCTTCCGACCAGATAGCGG	TACCACCGAGCCAAGAAGTGAC
<i>Arabidopsis actin</i>	AAGCAATGAGCATGAGCAAG	GGAAGACACGACAGGAAACAC
<i>TaCIPK23</i>	ATGGCAGGCTACCTTCCGTT	GATTGAGGCCCTGGGAGGTA
<i>wheat actin</i>	CTCCCTCACAACAACCGC	TACCAGGAACTTCCATACCAAC