

Curcumin decreases Warburg effect in cancer cells by down-regulating pyruvate kinase M2 via mTOR-HIF1 α inhibition.

Farid Ahmad Siddiqui¹, Gopinath Prakasam², Shilpi Chattopadhyay³, Asad Ur Rehman⁴, Rayees Ahmad Padder¹, Mohammad Afaque Ansari¹, Rasha Irshad¹, Kailash Mangalhara², Rameshwar NK Bamezai², Mohammad Husain¹, Syed Mansoor Ali¹ and Mohammad Askandar Iqbal^{1†}.

¹ Department of Biotechnology, Faculty of Natural Sciences, Jamia Millia Islamia, 1 110025, India

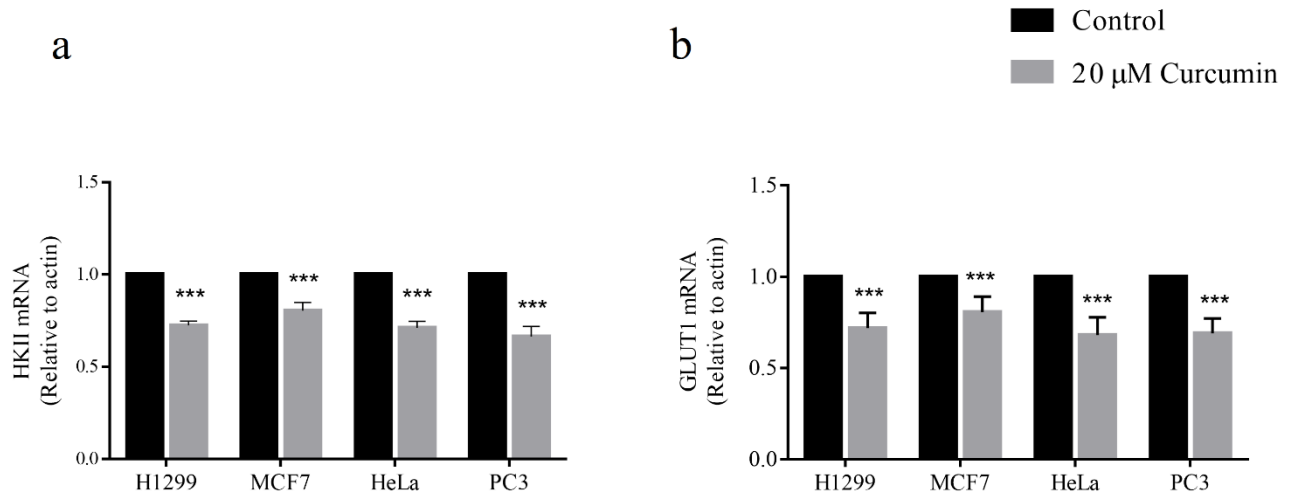
² School of Life Sciences, Jawaharlal Nehru University, New Delhi 110067, India

³ Department of Toxicology, Jamia Hamdard University, New Delhi 110062, India

⁴ Department of Biosciences, Faculty of Natural Sciences, Jamia Millia Islamia, New Delhi 110025, India

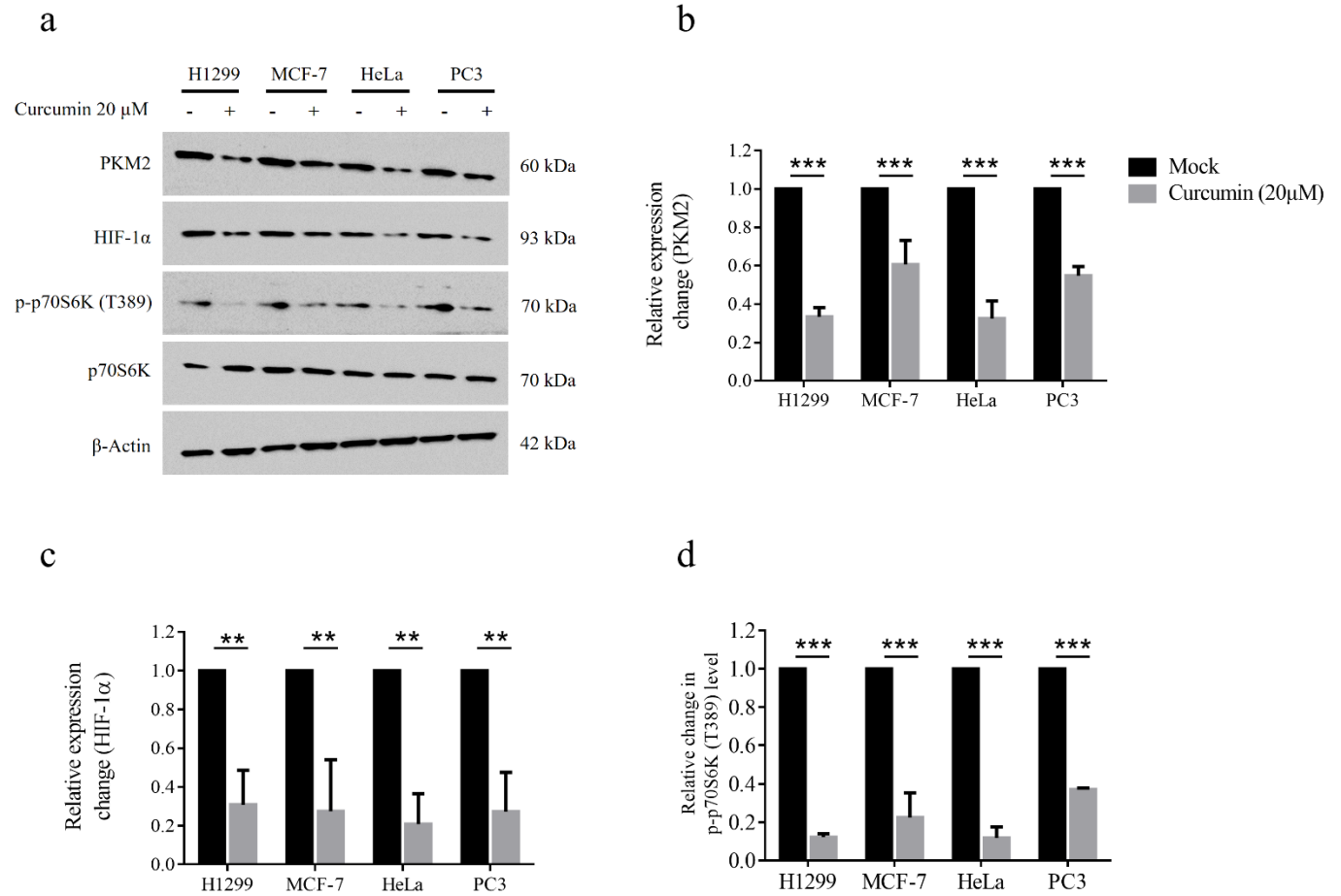
† Corresponding author: askandariqbal@gmail.com, miqbal2@jmi.ac.in.

Supplementary Figure S1.



Supplementary Figure S1. HKII and GLUT1 expression is inhibited by curcumin through mTOR/HIF1 α axis. Substantial reduction in HKII (a) and GLUT1 mRNA (b) in H1299, MCF-7, HeLa and PC3 cells treated with 20 μ M of curcumin for 24 hours. Error bars in HKII and GLUT1 mRNA graph represent mean \pm SD.

Supplementary Figure S2.



Supplementary Figure S2. PKM2 expression is inhibited by curcumin through mTOR/HIF1 α axis.

(a) Immunoblot of H1299, MCF-7, HeLa and PC3 cells showing coincided reduction in PKM2, HIF1 α and phosphorylated-p70S6K (T389), upon curcumin treatment. Bars represent the relative expression level of PKM2 (b), HIF1 α (c) and phosphorylated-p70S6K (T389) (d) in H1299, MCF-7, HeLa and PC3 cells treated with 20 μ M of curcumin for 24 hours. Error bars in graph represent mean \pm SD.

Full-length gels uncropped Western Blots

Figure 2B Raw Data

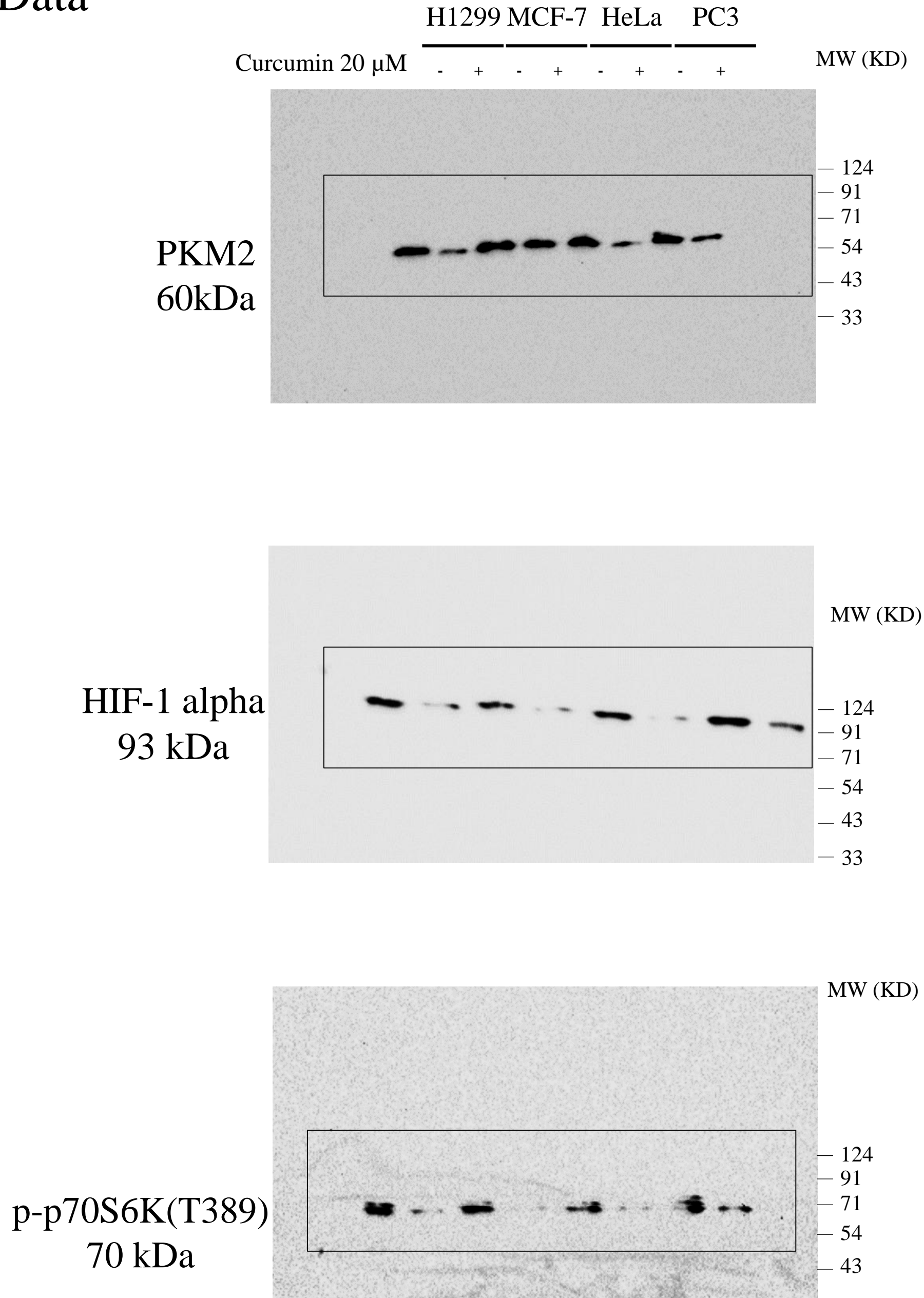


Figure 2B Raw Data Cont..

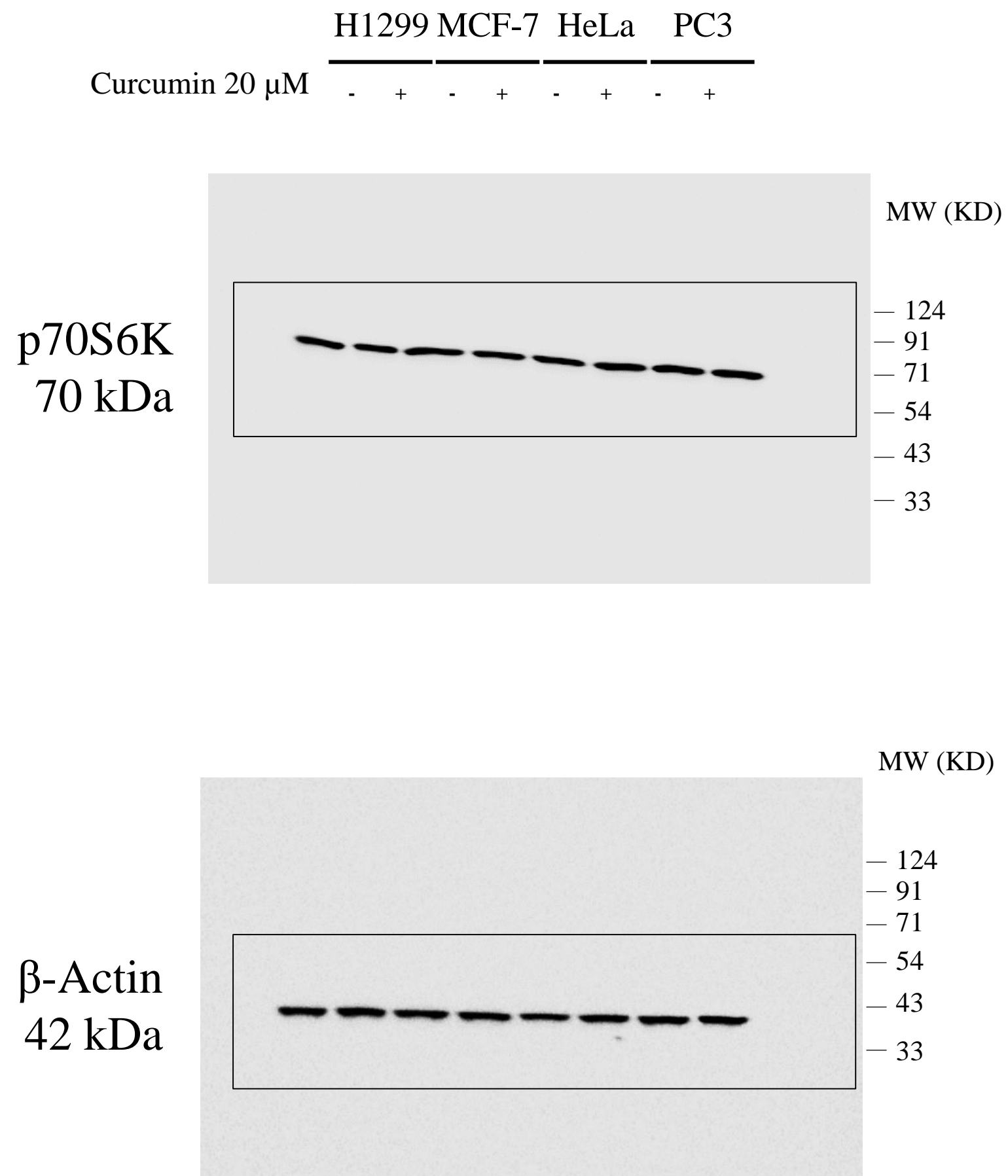


Figure 2C Raw Data

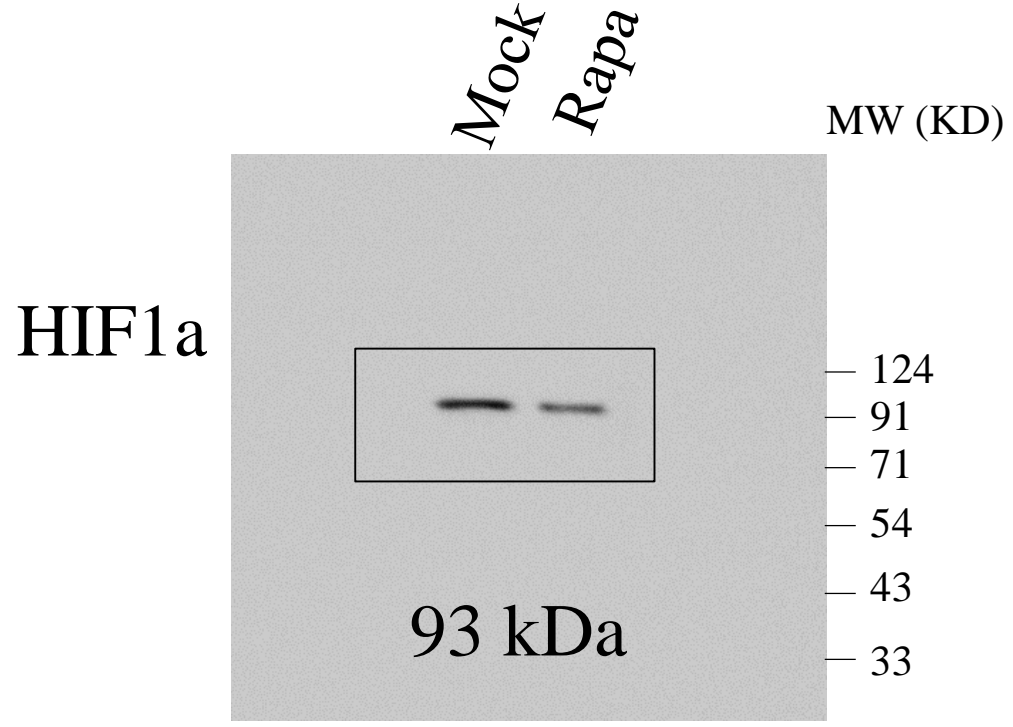
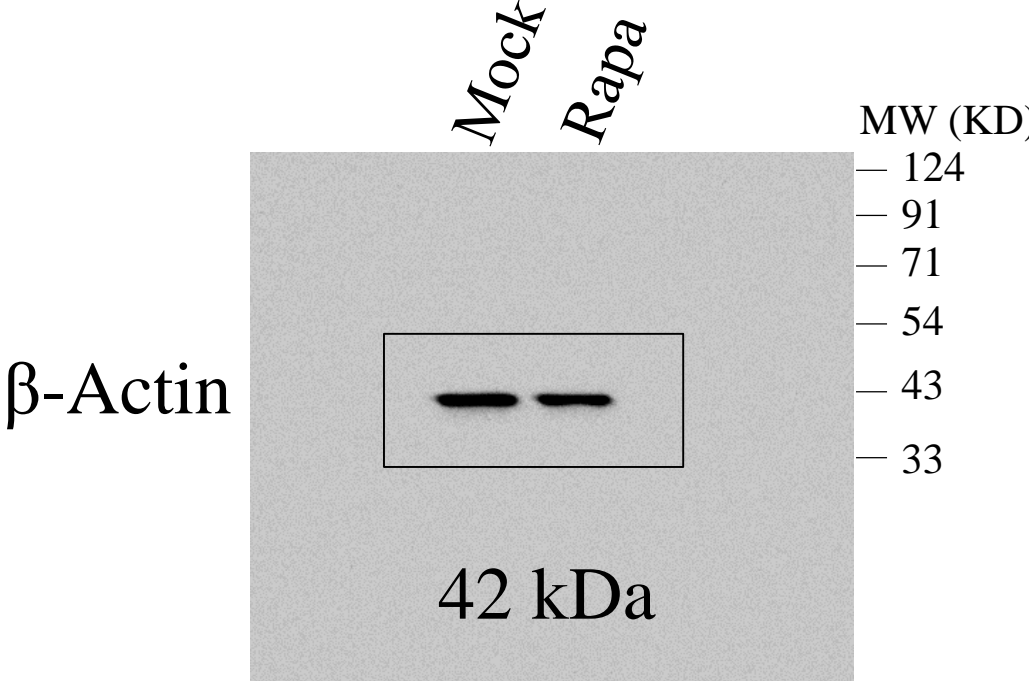
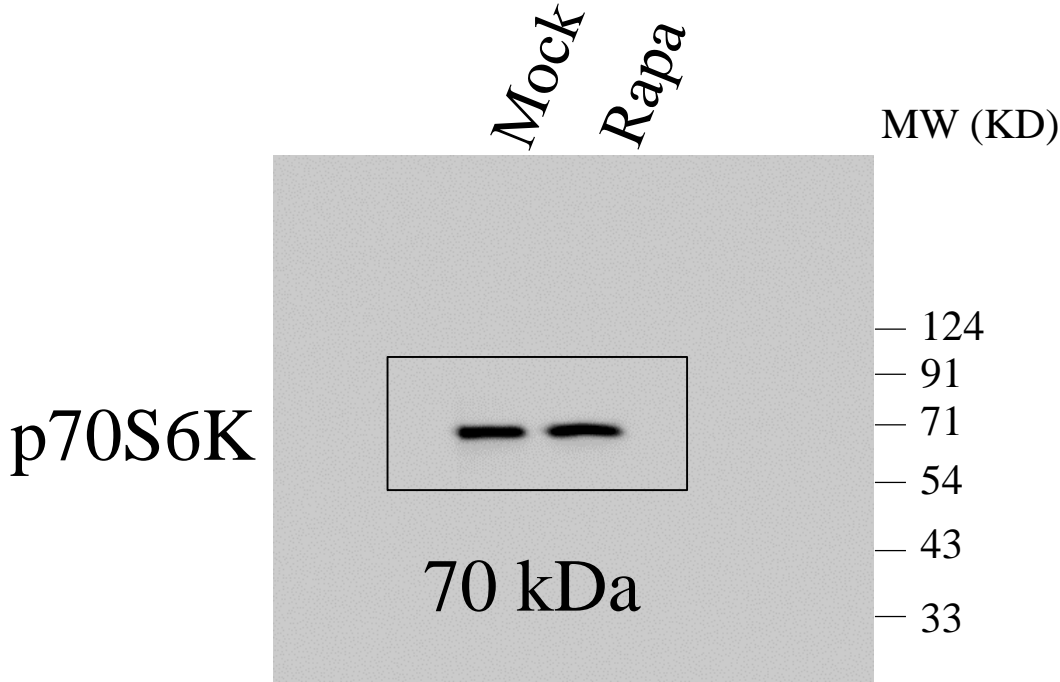
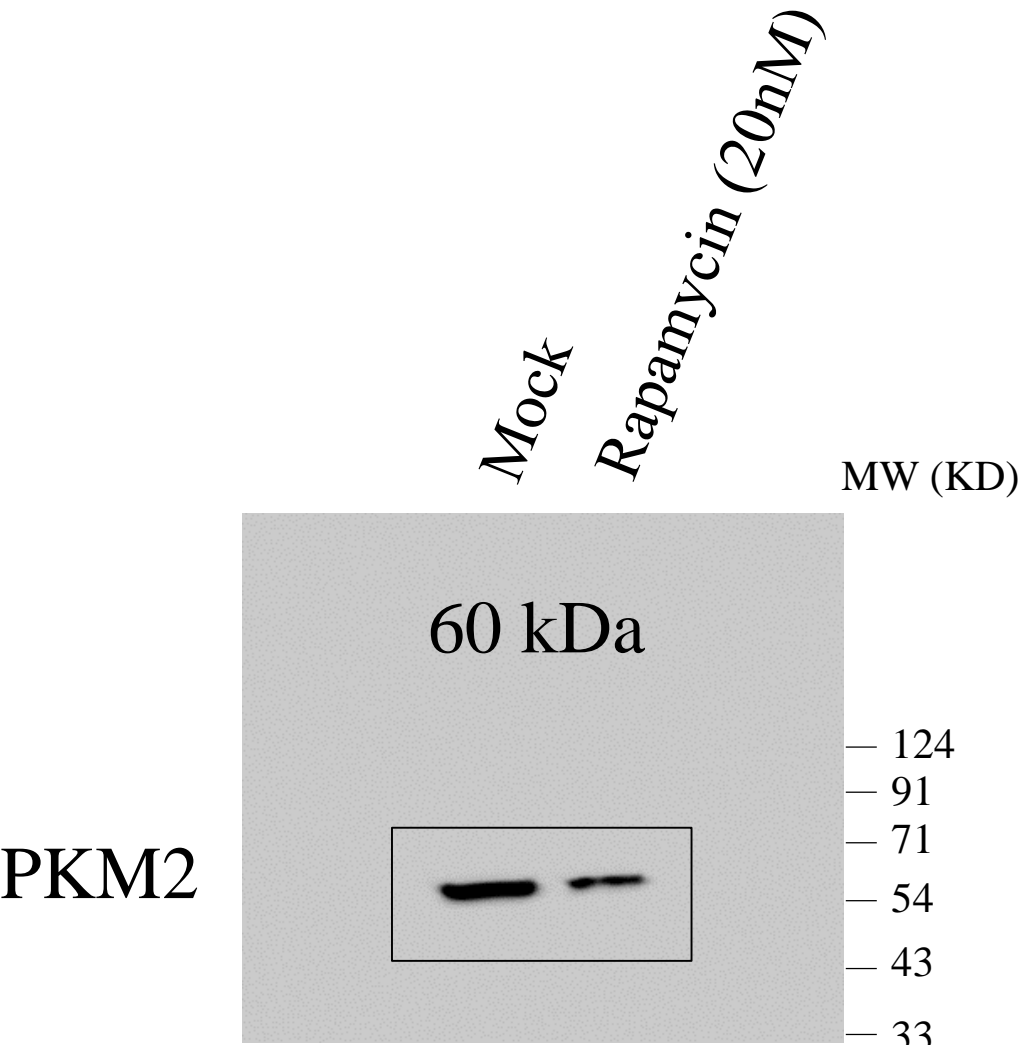
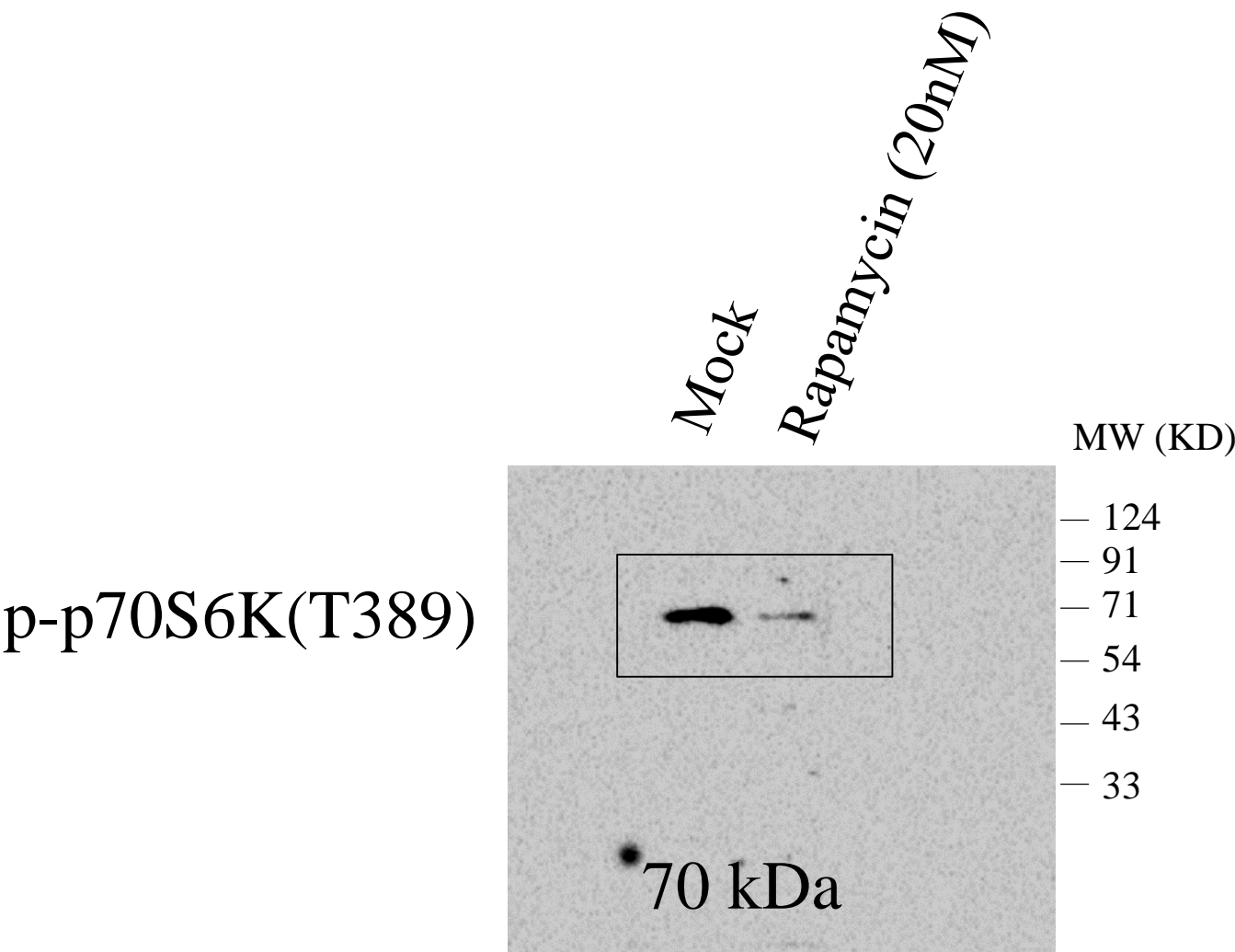


Figure 4A Raw Data

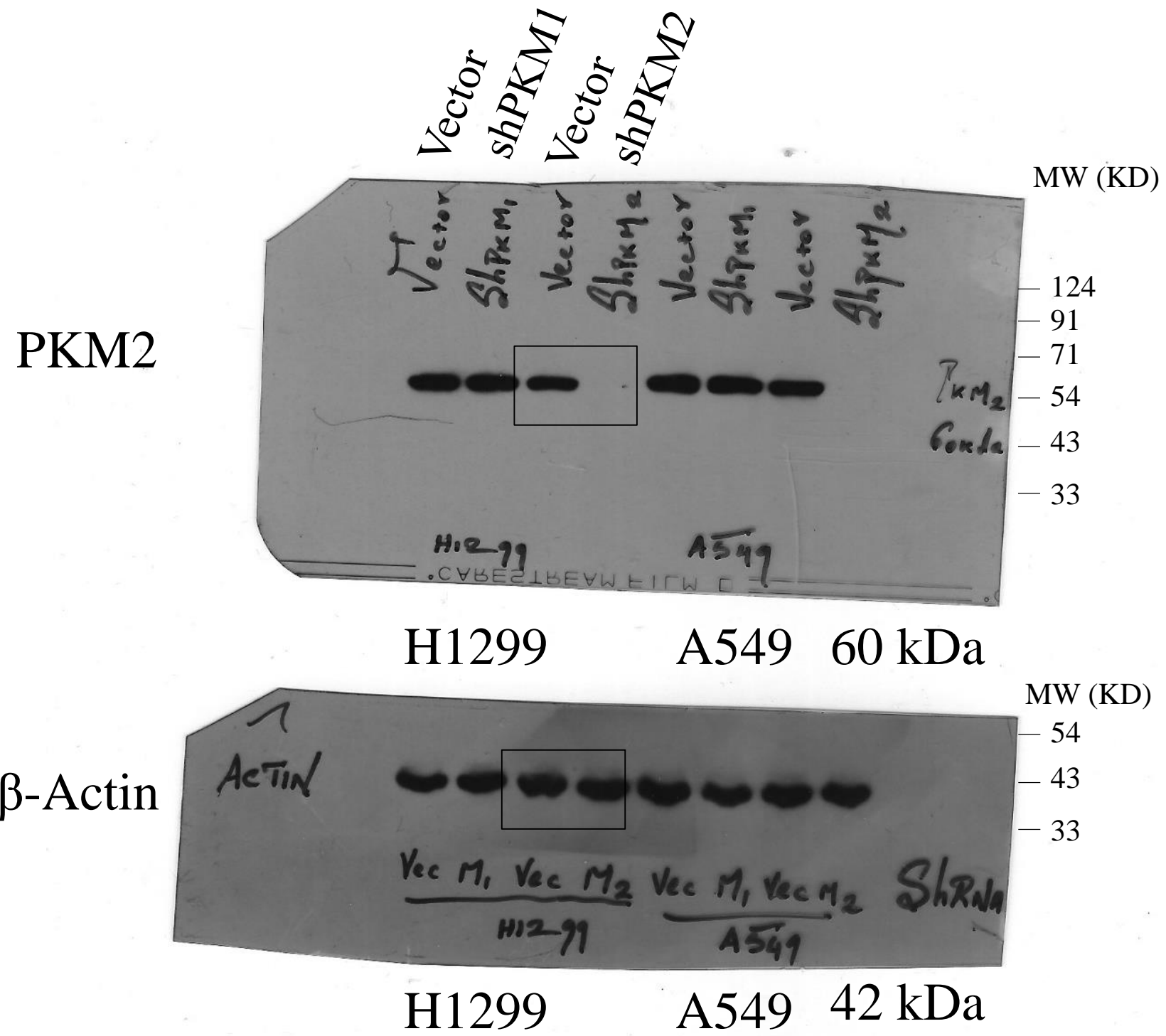
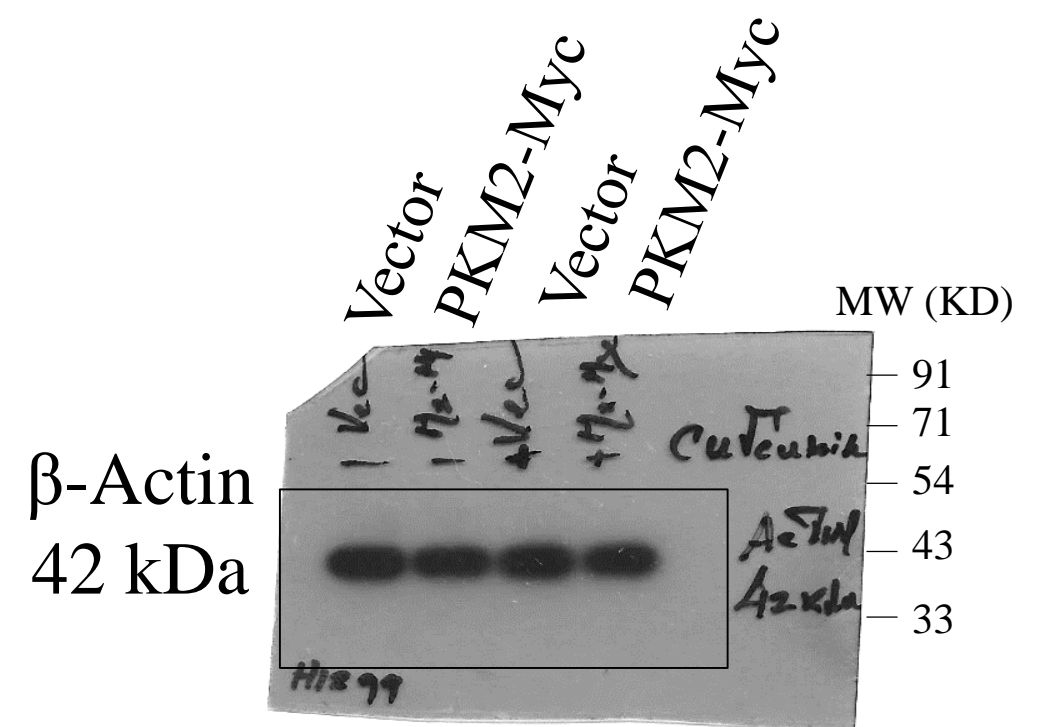
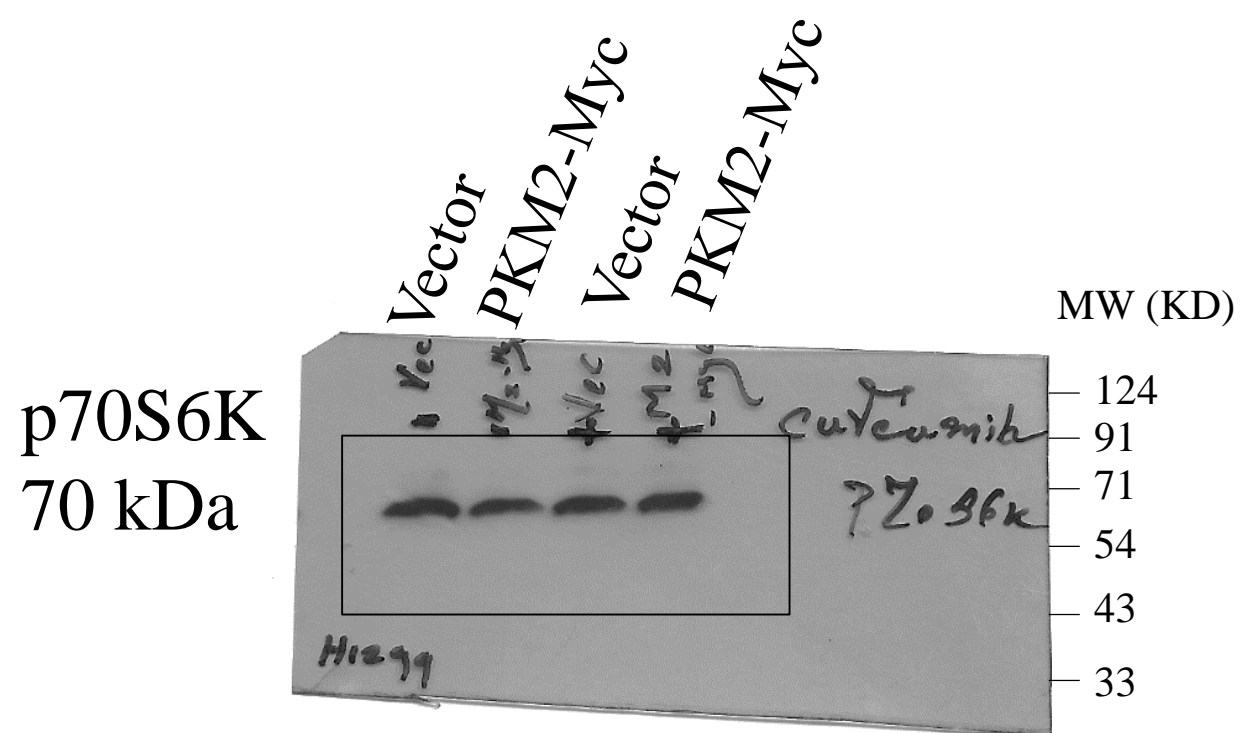
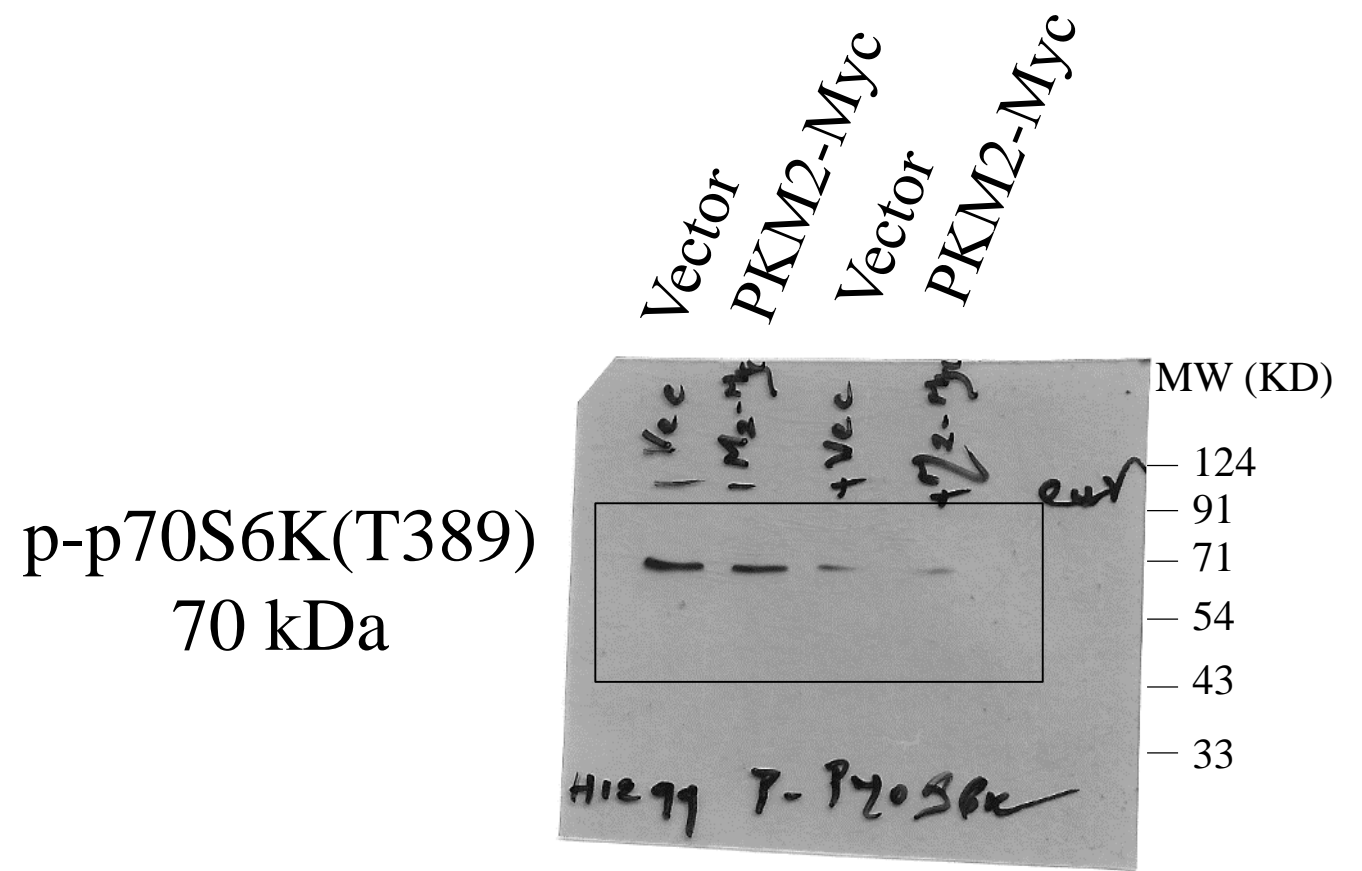
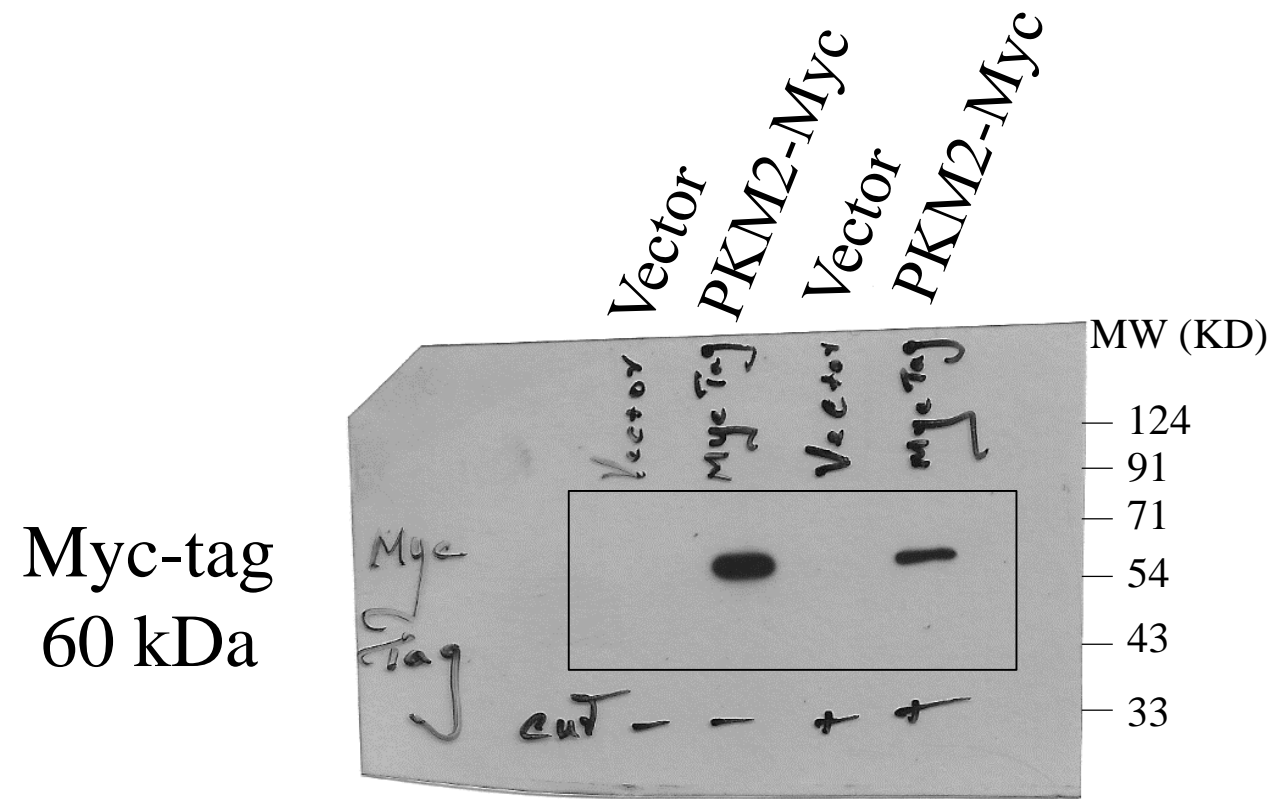


Figure 5A Raw Data



Supplementary Figure 2 Raw data

