

Additional file 3

Analysis using alternative diagnoses

Introduction

The main analysis considers the diagnosis probable Alzheimer's disease. As a sensitivity analysis, we also considered two alternative diagnoses. The first, any Alzheimer's disease, considers patients diagnosed with probable or possible Alzheimer's disease. The second, any dementia, considers patients diagnosed with any form of dementia i.e. probable Alzheimer's disease, possible Alzheimer's disease, non-Alzheimer's disease and mixed dementias. This additional file presents the trend graphs and joinpoint analysis output tables for each combination of diagnosis and drug class.

Note for all Joinpoint analysis output tables

Segments are the period between two join points and are numbered chronologically. Segment 1 begins at the analysis start date (June 1997 for AChE inhibitors and January 2003 for NMDA receptor antagonists) and the remaining segments begin with each joinpoint. Segment 3 ends in December 2015.

Note for all trend graphs

The fixed lines indicate events with the potential to effect prescription rates during the study period. The joinpoints, monthly percent change for each segment and the average monthly percent change for the entire study period are also presented.

List of Abbreviations

AD: Alzheimer's Disease
AChE: AcetylCholinEsterase
AMPC: Average Monthly Percent Change
CPRD: Clinical Practice Research Datalink
HES: Hospital Episode Statistics
MMSE: Mini Mental State Examination
MPC: Monthly Percent Change
NICE: National Institute of health and Care Excellence
NMDA: N-Methyl-D-Aspartate
ONS: Office of National Statistics
QOF: Quality and Outcomes Framework

Probable Alzheimer's disease & AChE inhibitor prescriptions

Figure 2: Indicative graph of AChE inhibitor prescriptions in patients with probable Alzheimer's disease.

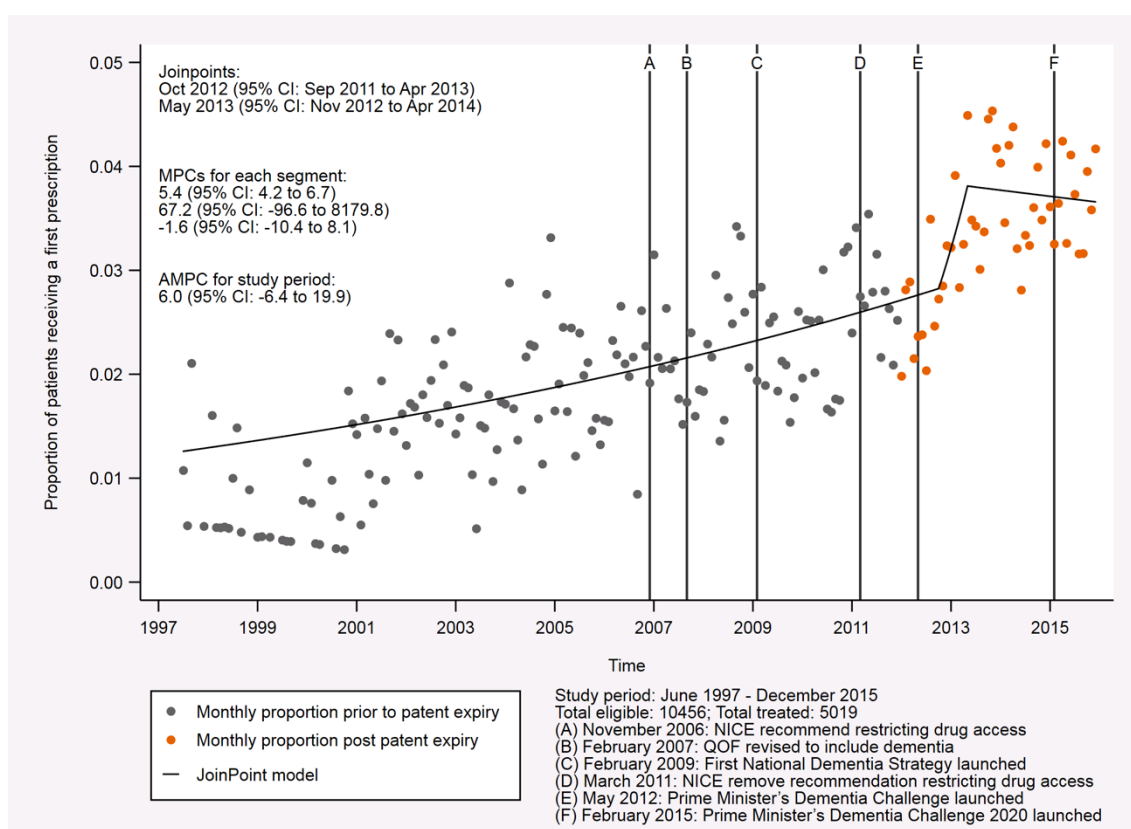


Table S3.1: Joinpoint analysis output for AChE inhibitor prescriptions in patients with probable Alzheimer's disease.

| | Segment 1 | Segment 2 | Segment 3 |
|-----------------------------|----------------|----------------|---------------|
| Joinpoint | Not applicable | October 2012 | May 2013 |
| Joinpoint 95% LCL | Not applicable | September 2011 | November 2012 |
| Joinpoint 95% UCL | Not applicable | April 2013 | April 2014 |
| Intercept estimate | -110.174 | -1038.186 | 28.411 |
| Intercept standard error | 12.401 | 3982.069 | 95.917 |
| Intercept test statistic | -8.884 | -0.261 | 0.296 |
| Intercept p-value | 0.000 | 0.795 | 0.767 |
| Slope estimate | 0.053 | 0.514 | -0.016 |
| Slope standard error | 0.006 | 1.978 | 0.048 |
| Slope test statistic | 8.576 | 0.260 | -0.331 |
| Slope p-value | 0.000 | 0.795 | 0.741 |
| Slope change estimate | Not applicable | 0.461 | -0.530 |
| Slope change standard error | Not applicable | 1.978 | 1.979 |
| Slope change test statistic | Not applicable | 0.233 | -0.268 |
| Slope change p-value | Not applicable | 0.816 | 0.789 |

Probable Alzheimer's disease & NMDA receptor antagonist prescriptions

Figure 3: Indicative graph of NMDA receptor antagonist prescriptions in patients with probable Alzheimer's disease.

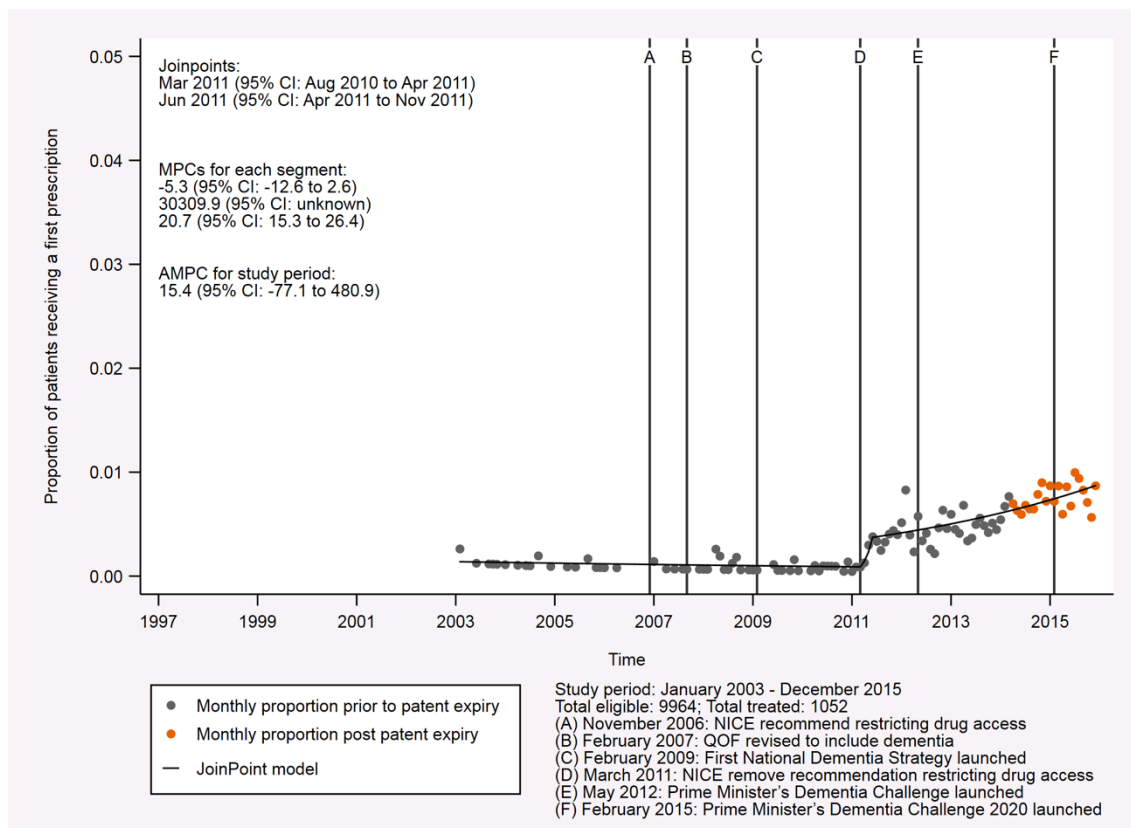


Table S3.2: Joinpoint analysis output for NMDA receptor antagonist prescriptions in patients with probable Alzheimer's disease.

| | Segment 1 | Segment 2 | Segment 3 |
|-----------------------------|----------------|-------------|---------------|
| Joinpoint | Not applicable | March 2011 | June 2011 |
| Joinpoint 95% LCL | Not applicable | August 2010 | April 2011 |
| Joinpoint 95% UCL | Not applicable | April 2011 | November 2011 |
| Intercept estimate | 102.447 | -11505.572 | -384.099 |
| Intercept standard error | 81.399 | 85104.301 | 46.589 |
| Intercept test statistic | 1.259 | -0.135 | -8.244 |
| Intercept p-value | 0.211 | 0.893 | 0.000 |
| Slope estimate | -0.054 | 5.717 | 0.188 |
| Slope standard error | 0.041 | 42.313 | 0.023 |
| Slope test statistic | -1.343 | 0.135 | 8.136 |
| Slope p-value | 0.183 | 0.893 | 0.000 |
| Slope change estimate | Not applicable | 5.772 | -5.529 |
| Slope change standard error | Not applicable | 42.314 | 42.313 |
| Slope change test statistic | Not applicable | 0.136 | -0.131 |
| Slope change p-value | Not applicable | 0.892 | 0.896 |

Any Alzheimer's disease & AChE inhibitor prescriptions

Figure S3.1: Indicative graph of AChE inhibitor prescriptions in patients with any Alzheimer's disease.

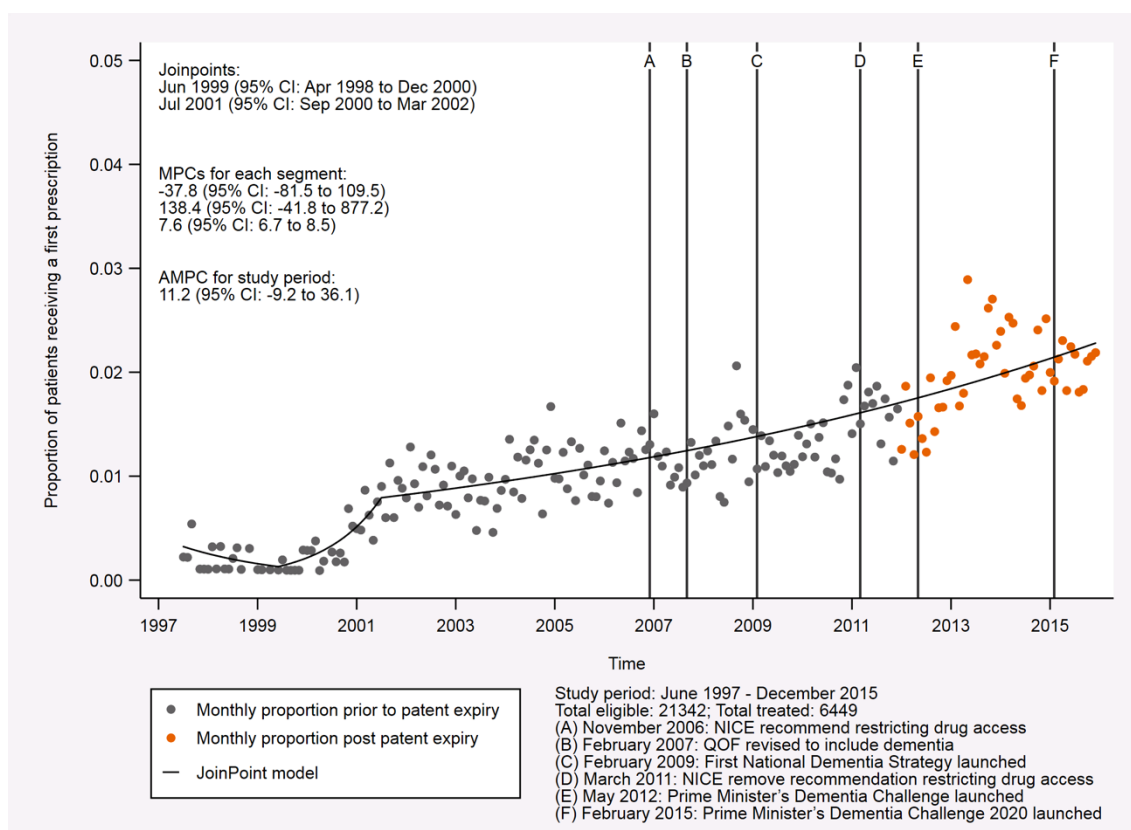


Table S3.3: Joinpoint analysis output for AChE inhibitor prescriptions in patients with any Alzheimer's disease.

| | Segment 1 | Segment 2 | Segment 3 |
|-----------------------------|----------------|---------------|----------------|
| Joinpoint | Not applicable | June 1999 | July 2001 |
| Joinpoint 95% LCL | Not applicable | April 1998 | September 2000 |
| Joinpoint 95% UCL | Not applicable | December 2000 | March 2002 |
| Intercept estimate | 943.277 | -1743.896 | -151.473 |
| Intercept standard error | 1230.225 | 1430.504 | 8.202 |
| Intercept test statistic | 0.767 | -1.219 | -18.468 |
| Intercept p-value | 0.444 | 0.224 | 0.000 |
| Slope estimate | -0.475 | 0.869 | 0.073 |
| Slope standard error | 0.616 | 0.715 | 0.004 |
| Slope test statistic | -0.772 | 1.215 | 17.965 |
| Slope p-value | 0.441 | 0.226 | 0.000 |
| Slope change estimate | Not applicable | 1.344 | -0.796 |
| Slope change standard error | Not applicable | 0.944 | 0.715 |
| Slope change test statistic | Not applicable | 1.424 | -1.113 |
| Slope change p-value | Not applicable | 0.156 | 0.267 |

Any Alzheimer's disease & NMDA receptor antagonist prescriptions

Figure S3.2: Indicative graph of NMDA receptor antagonist prescriptions in patients with any Alzheimer's disease.

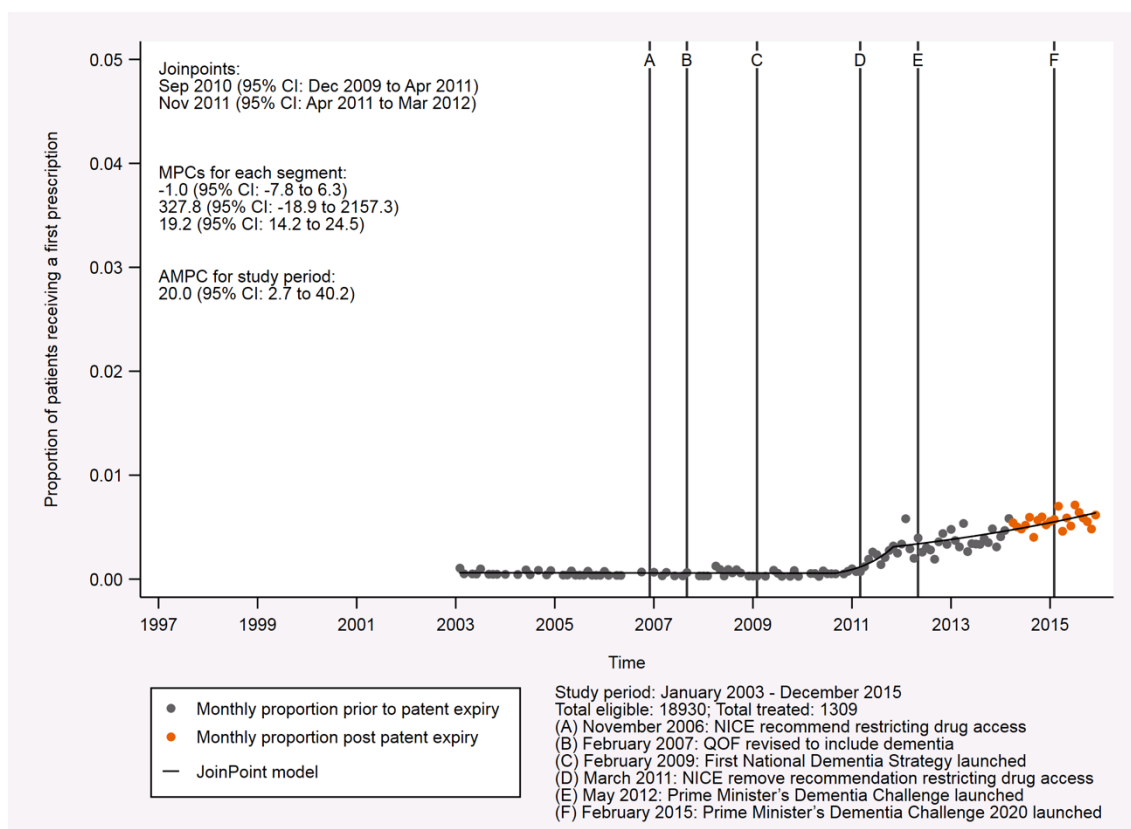


Table S3.4: Joinpoint analysis output for NMDA receptor antagonist prescriptions in patients with any Alzheimer's disease.

| | Segment 1 | Segment 2 | Segment 3 |
|-----------------------------|----------------|----------------|---------------|
| Joinpoint | Not applicable | September 2010 | November 2011 |
| Joinpoint 95% LCL | Not applicable | December 2009 | April 2011 |
| Joinpoint 95% UCL | Not applicable | April 2011 | March 2012 |
| Intercept estimate | 12.716 | -2930.156 | -359.411 |
| Intercept standard error | 72.053 | 1686.414 | 43.800 |
| Intercept test statistic | 0.176 | -1.738 | -8.206 |
| Intercept p-value | 0.860 | 0.085 | 0.000 |
| Slope estimate | -0.010 | 1.454 | 0.176 |
| Slope standard error | 0.036 | 0.838 | 0.022 |
| Slope test statistic | -0.280 | 1.734 | 8.084 |
| Slope p-value | 0.780 | 0.086 | 0.000 |
| Slope change estimate | Not applicable | 1.464 | -1.278 |
| Slope change standard error | Not applicable | 0.839 | 0.839 |
| Slope change test statistic | Not applicable | 1.744 | -1.523 |
| Slope change p-value | Not applicable | 0.084 | 0.131 |

Any dementia & AChE inhibitor prescriptions

Figure S3.3: Indicative graph of AChE inhibitor prescriptions in patients with any dementia.

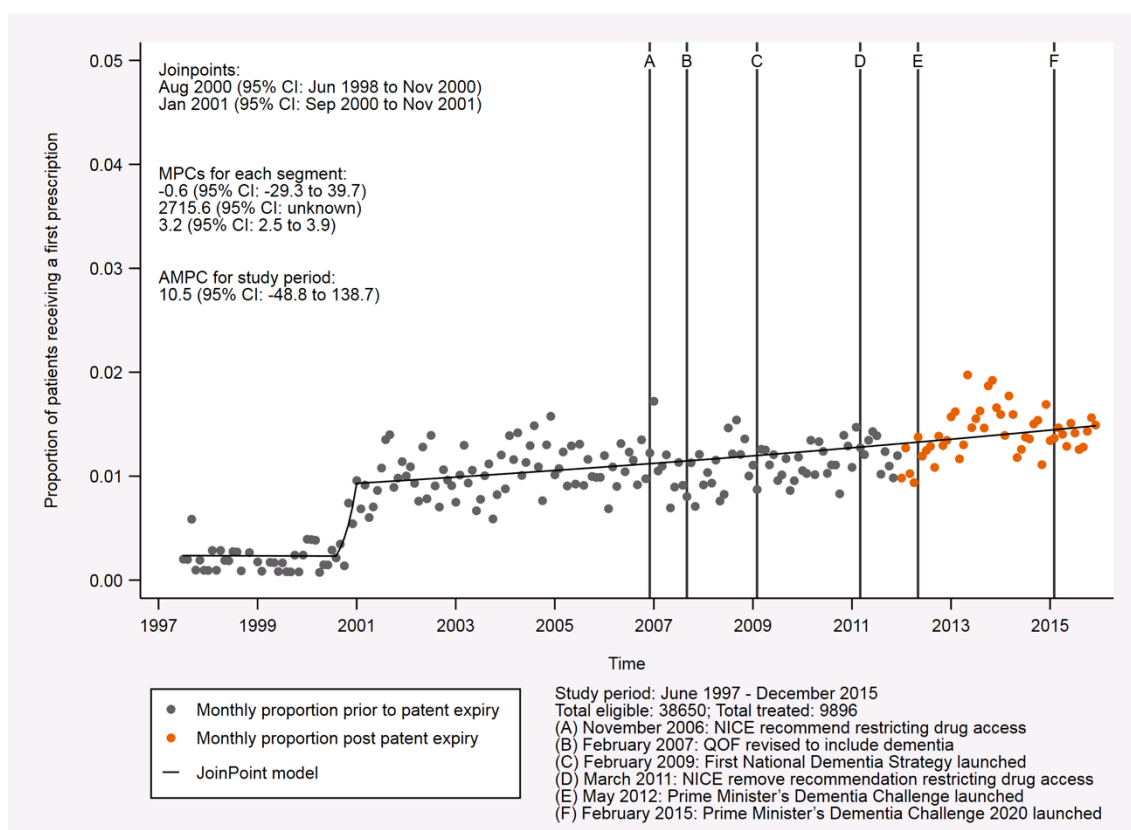


Table S3.5: Joinpoint analysis output for AChE inhibitor prescriptions in patients with any dementia.

| | Segment 1 | Segment 2 | Segment 3 |
|-----------------------------|----------------|---------------|----------------|
| Joinpoint | Not applicable | August 2000 | January 2001 |
| Joinpoint 95% LCL | Not applicable | June 1998 | September 2000 |
| Joinpoint 95% UCL | Not applicable | November 2000 | November 2001 |
| Intercept estimate | 6.837 | -6683.509 | -67.325 |
| Intercept standard error | 345.577 | 34621.871 | 6.807 |
| Intercept test statistic | 0.020 | -0.193 | -9.890 |
| Intercept p-value | 0.984 | 0.847 | 0.000 |
| Slope estimate | -0.006 | 3.338 | 0.031 |
| Slope standard error | 0.173 | 17.305 | 0.003 |
| Slope test statistic | -0.037 | 0.193 | 9.248 |
| Slope p-value | 0.970 | 0.847 | 0.000 |
| Slope change estimate | Not applicable | 3.344 | -3.306 |
| Slope change standard error | Not applicable | 17.305 | 17.305 |
| Slope change test statistic | Not applicable | 0.193 | -0.191 |
| Slope change p-value | Not applicable | 0.847 | 0.849 |

Any dementia & NMDA receptor antagonist prescriptions

Figure S3.4: Indicative graph NMDA receptor antagonist prescriptions in patients with any dementia.

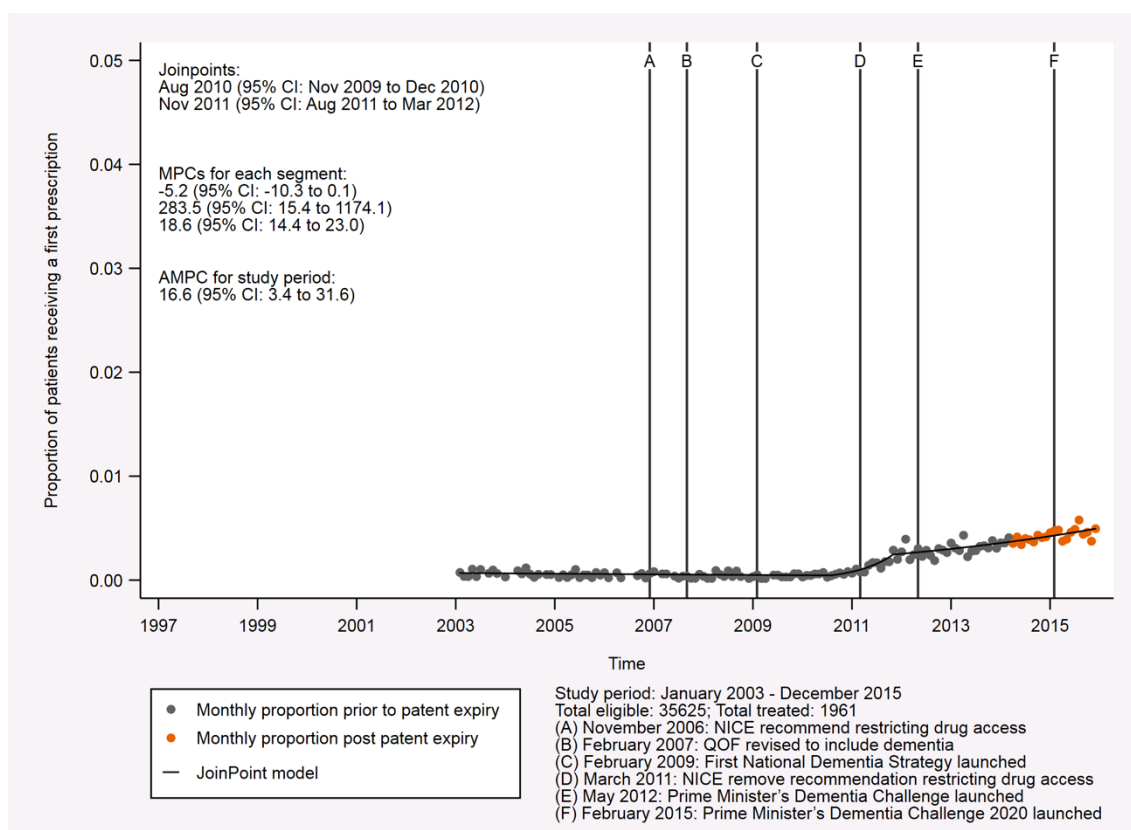


Table S3.6: Joinpoint analysis output for NMDA receptor antagonist prescriptions in patients with any dementia.

| | Segment 1 | Segment 2 | Segment 3 |
|-----------------------------|----------------|---------------|---------------|
| Joinpoint | Not applicable | August 2010 | November 2011 |
| Joinpoint 95% LCL | Not applicable | November 2009 | August 2011 |
| Joinpoint 95% UCL | Not applicable | December 2010 | March 2012 |
| Intercept estimate | 100.313 | -2710.001 | -349.231 |
| Intercept standard error | 55.359 | 1219.196 | 36.632 |
| Intercept test statistic | 1.812 | -2.223 | -9.534 |
| Intercept p-value | 0.073 | 0.028 | 0.000 |
| Slope estimate | -0.054 | 1.344 | 0.171 |
| Slope standard error | 0.028 | 0.606 | 0.018 |
| Slope test statistic | -1.947 | 2.217 | 9.382 |
| Slope p-value | 0.054 | 0.029 | 0.000 |
| Slope change estimate | Not applicable | 1.398 | -1.173 |
| Slope change standard error | Not applicable | 0.607 | 0.606 |
| Slope change test statistic | Not applicable | 2.303 | -1.935 |
| Slope change p-value | Not applicable | 0.023 | 0.055 |