

Loop-mediated Isothermal Amplification-Single Nucleotide
Polymorphism Analysis for Detection and Differentiation of Wild-type
and Vaccine Strains of Mink Enteritis Virus

Peng Lin^{1,*}, Honglin Wang^{2,*}, Yuening Cheng¹, Shanshan Song¹, Yaru Sun¹, Miao
Zhang¹, Li Guo¹, Li Yi¹, Mingwei Tong¹, Zhigang Cao¹, Shuang Li¹, Shipeng Cheng¹
& Jianke Wang¹

¹Key Laboratory of Special Animal Epidemic Disease, Ministry of Agriculture, P.R.
China; Institute of Special Animal and Plant Sciences, Chinese Academy of
Agricultural Sciences, Changchun 130112, People's Republic of China

²Shandong Sinder Technology Co., Ltd , Zhucheng, Shandong 262204, People's
Republic of China

Key Laboratory of Special Animal Epidemic Disease, Ministry of Agriculture, P.R.
China; Institute of Special Animal and Plant Sciences, Chinese Academy of
Agricultural Sciences, No. 4899, Juye Street, Jingyue District, Changchun, People's
Republic of China 130112.

*These authors contributed equally to this work.

Tel.: +86 431 81919845; Fax: +86 431 81919800.

Correspondence and requests for materials should be addressed to J.-K.W. (email:
tcswj@126.com)

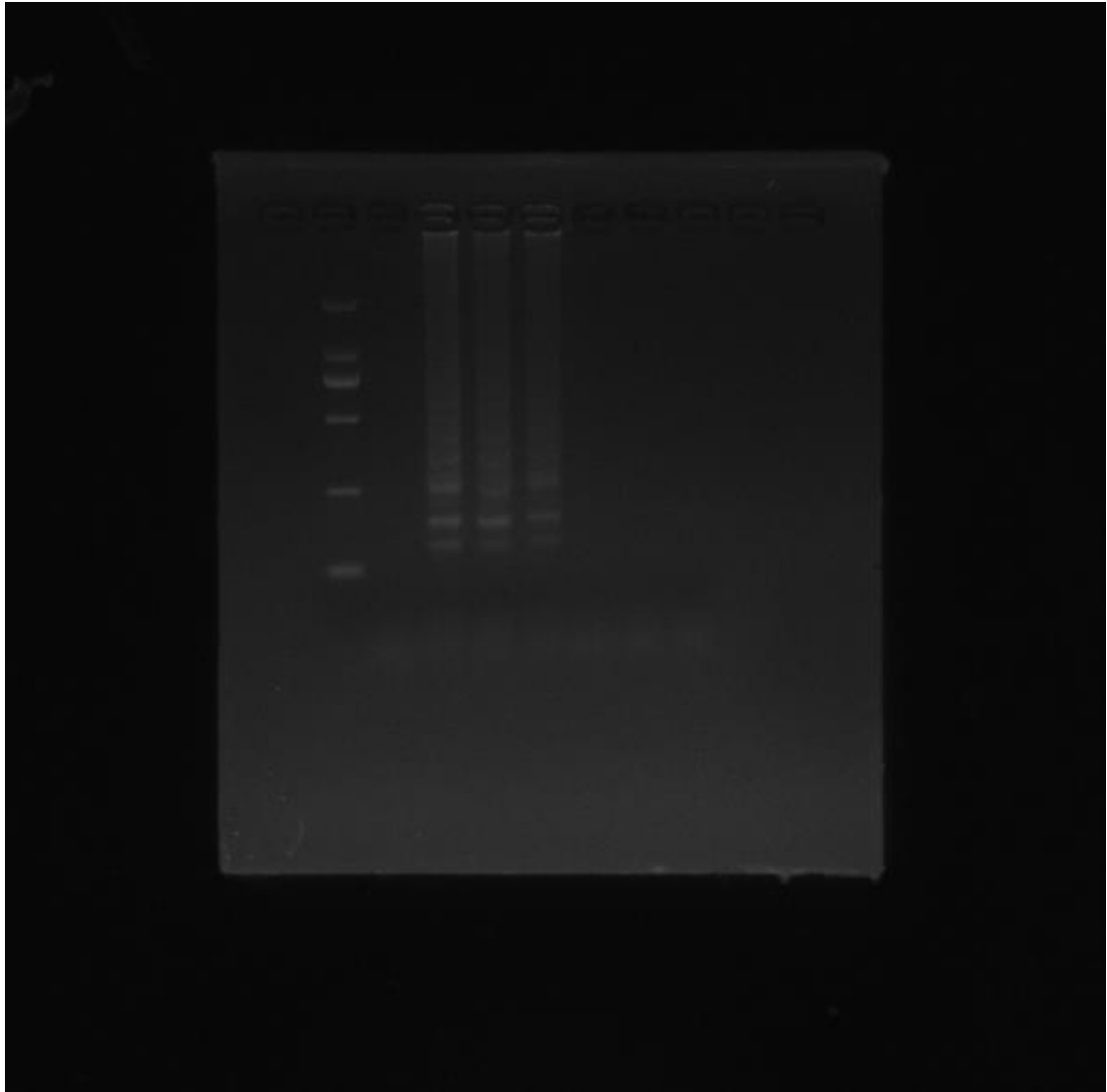
Legends:

Supplementary Figure 1: Full-length gel of figure 1;

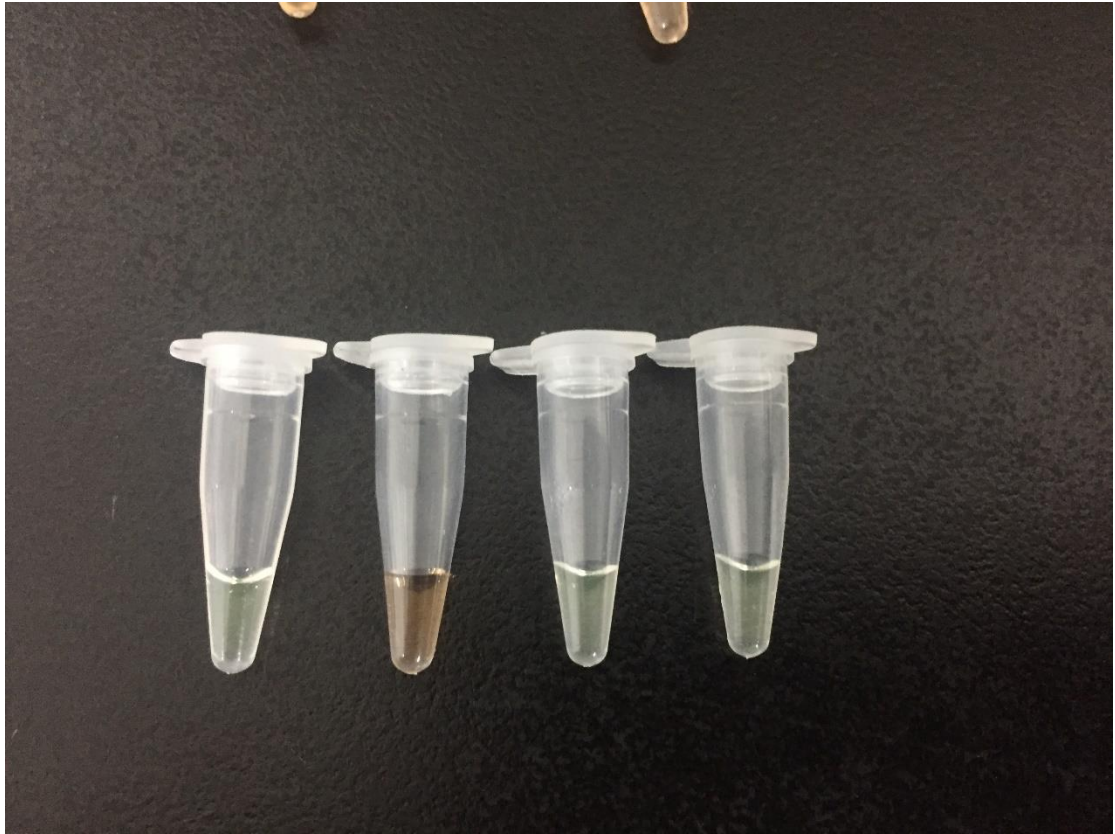
Supplementary Figure 2A and 2B: Full-length tubes of figure 2;

Supplementary Figure 3A and 3B: Full-length gels and tubes of figure 3;

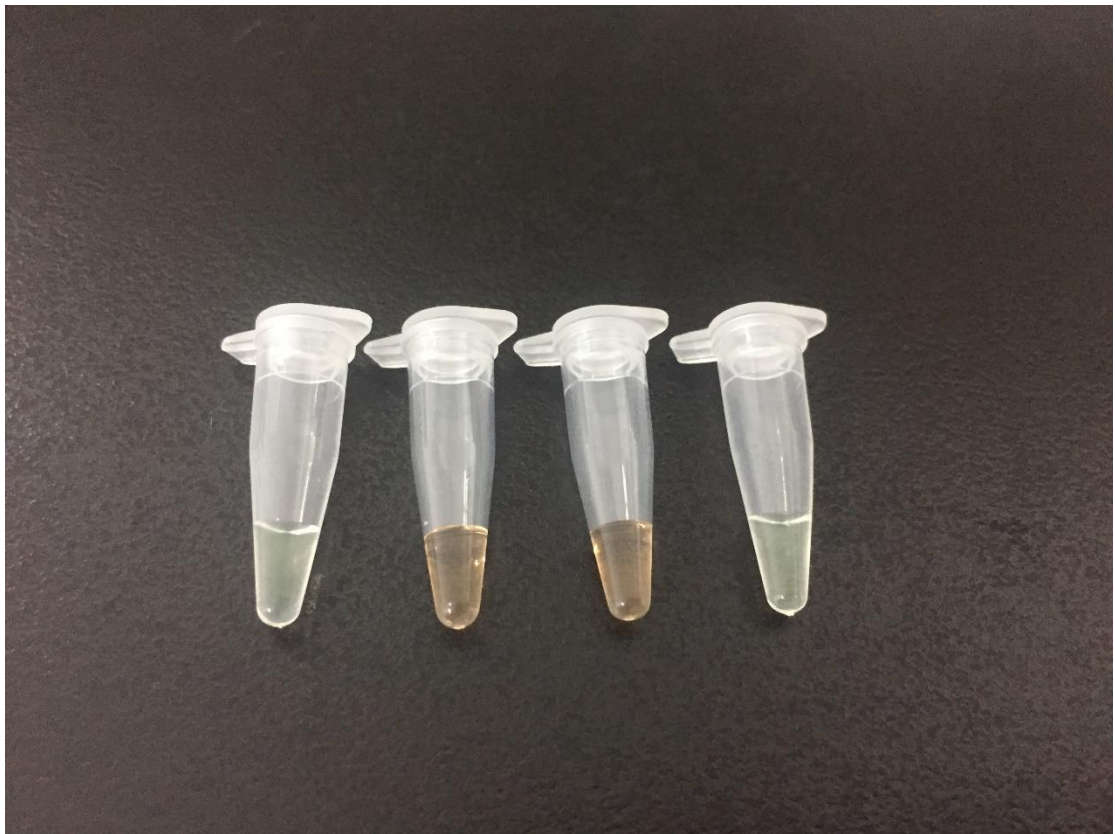
Supplementary Figure 4A and 4B: Full-length tubes and immunofluorescence pictures of figure 4.



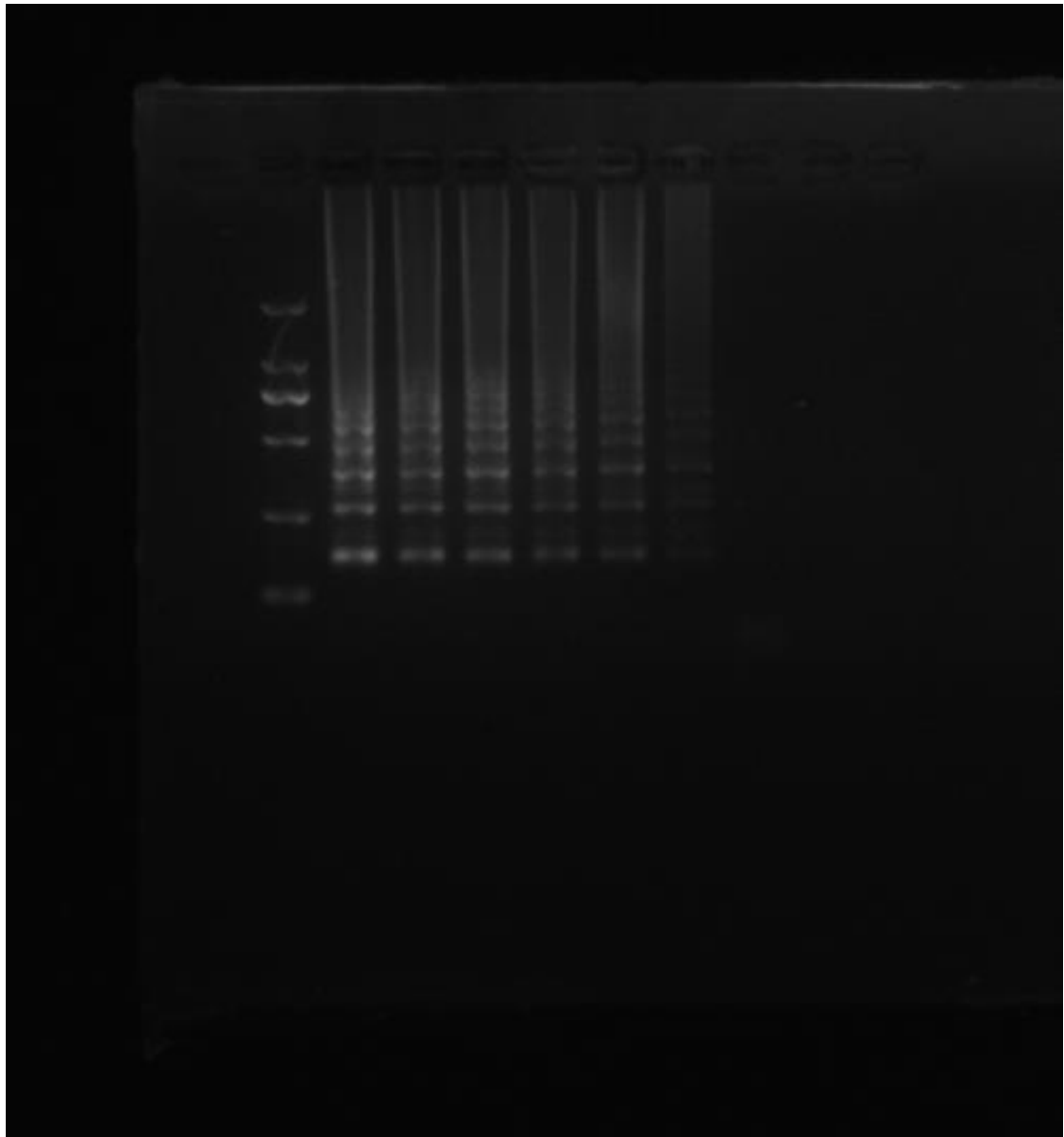
Supplementary Figure 1



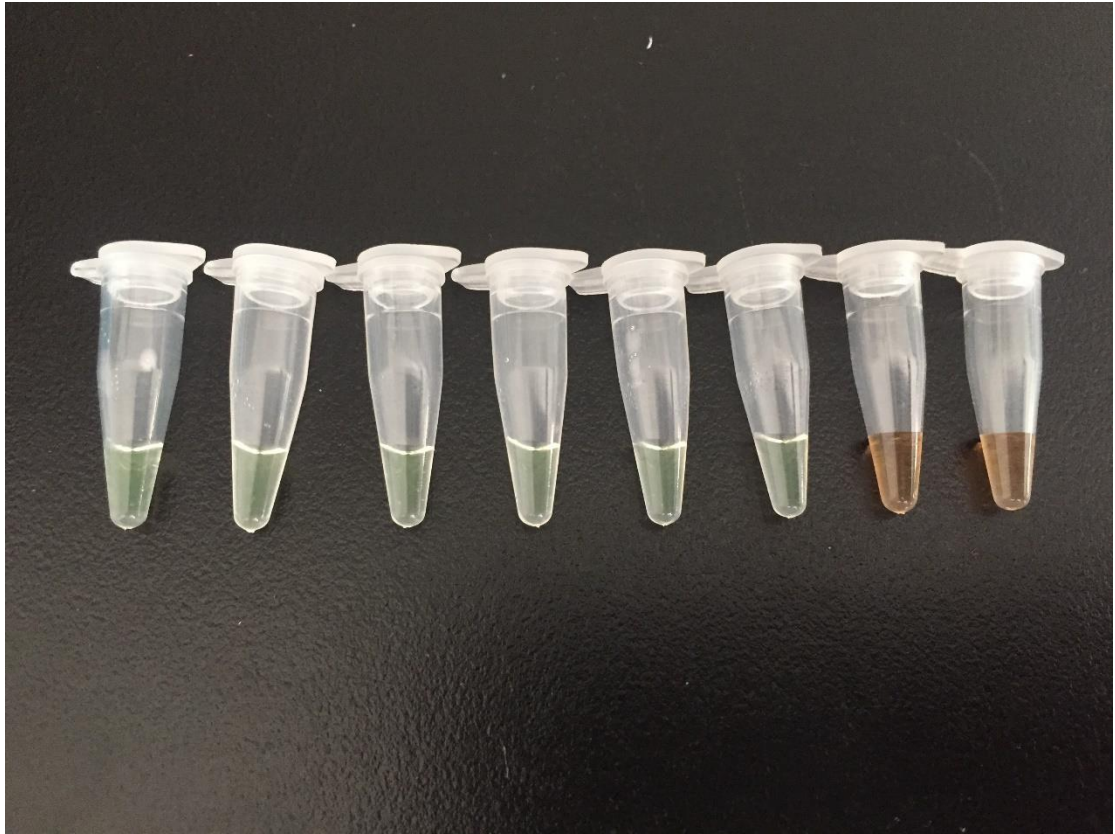
Supplementary Figure 2A



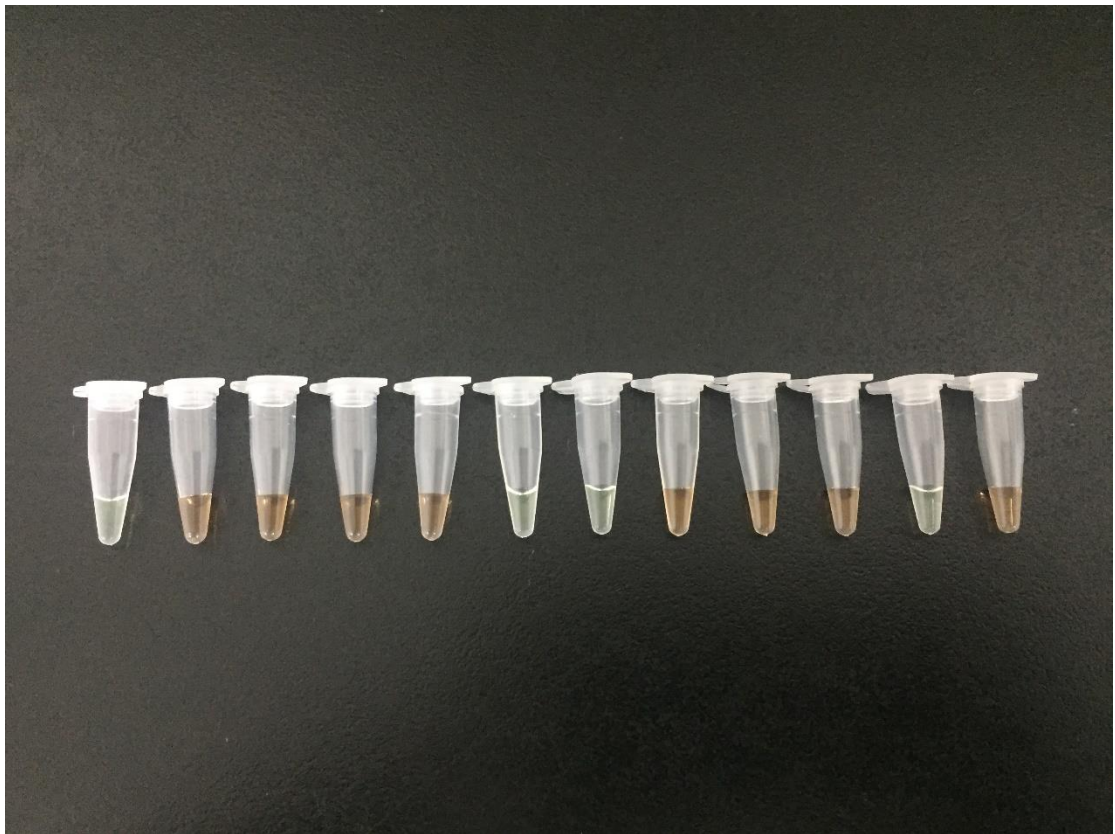
Supplementary Figure 2B



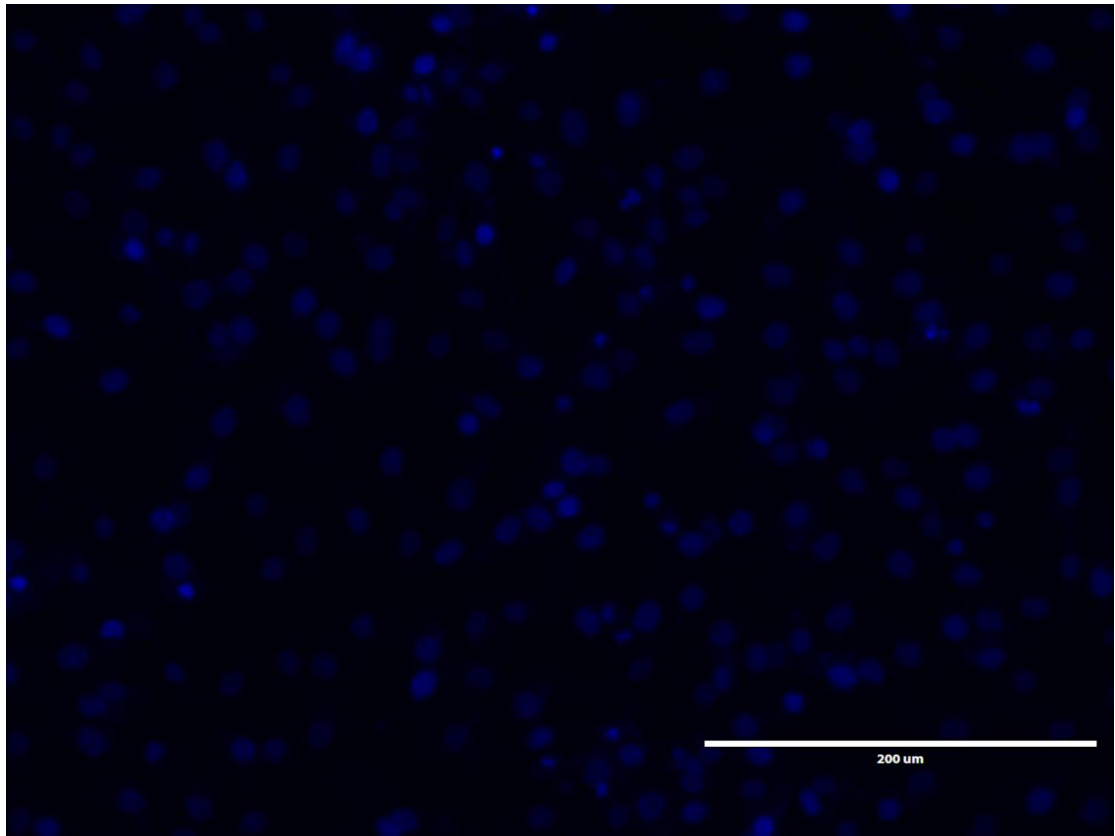
Supplementary Figure 3A



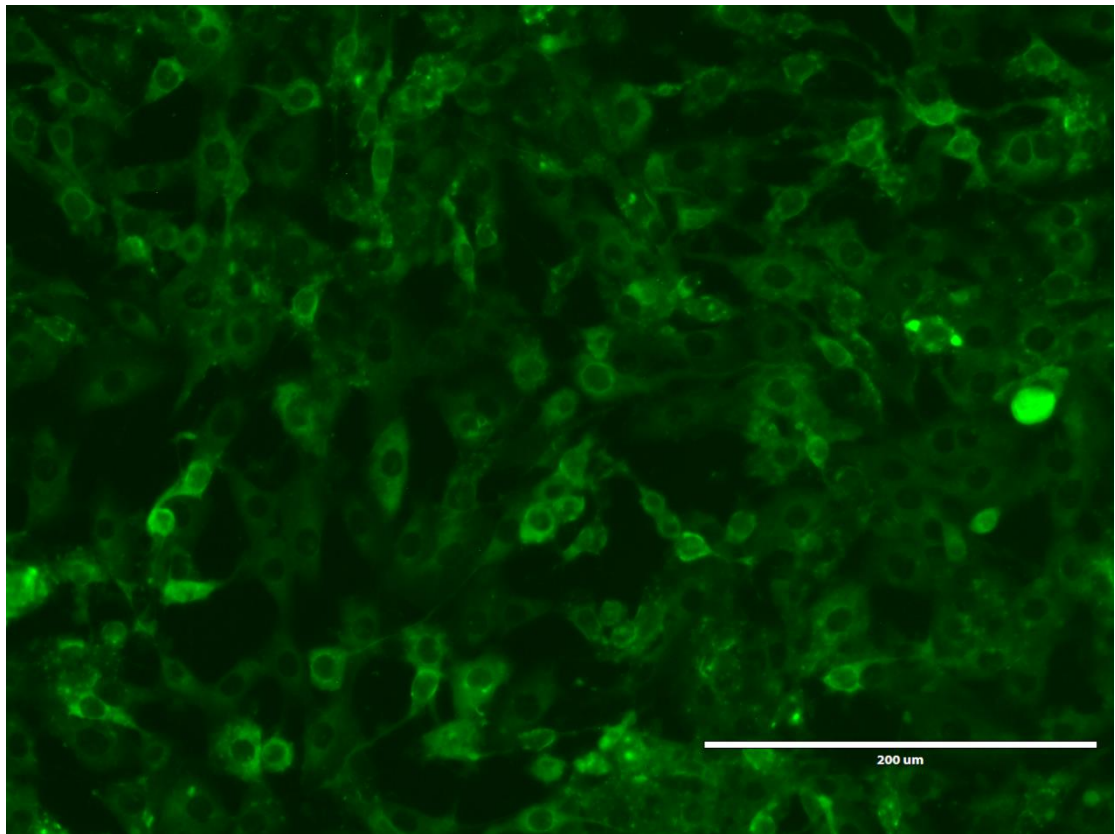
Supplementary Figure 3B



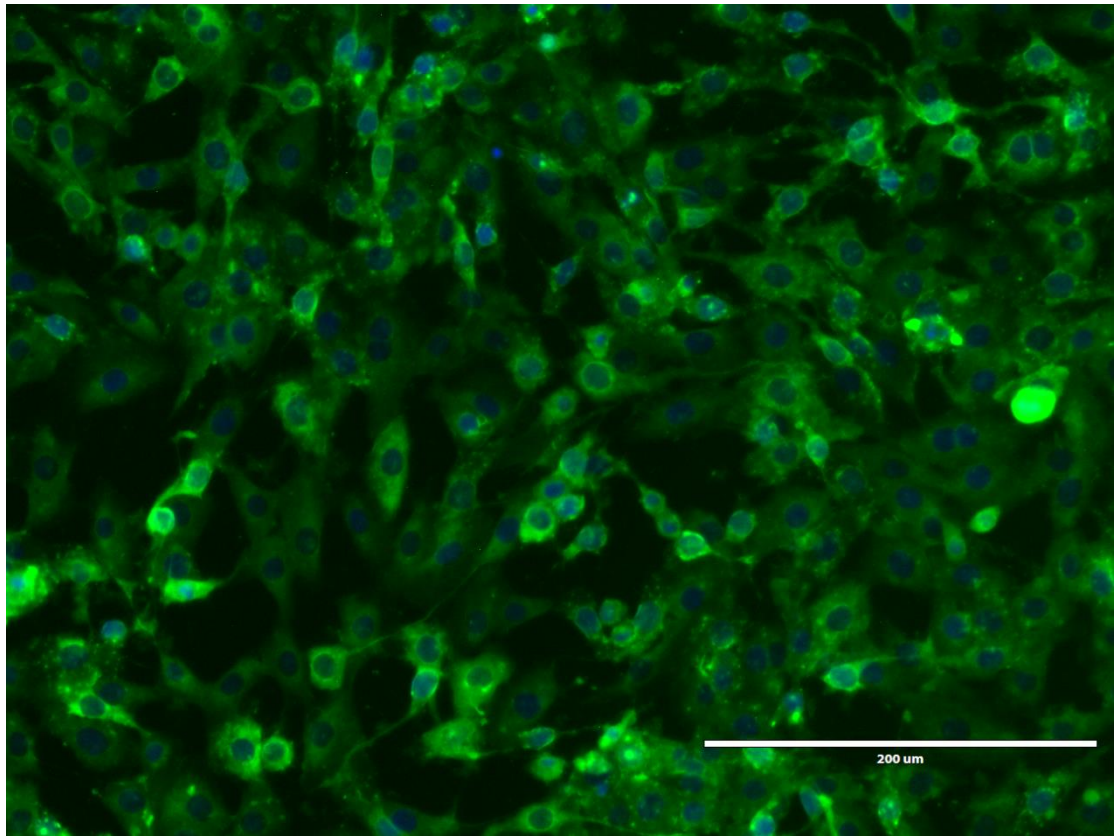
Supplementary Figure 4A



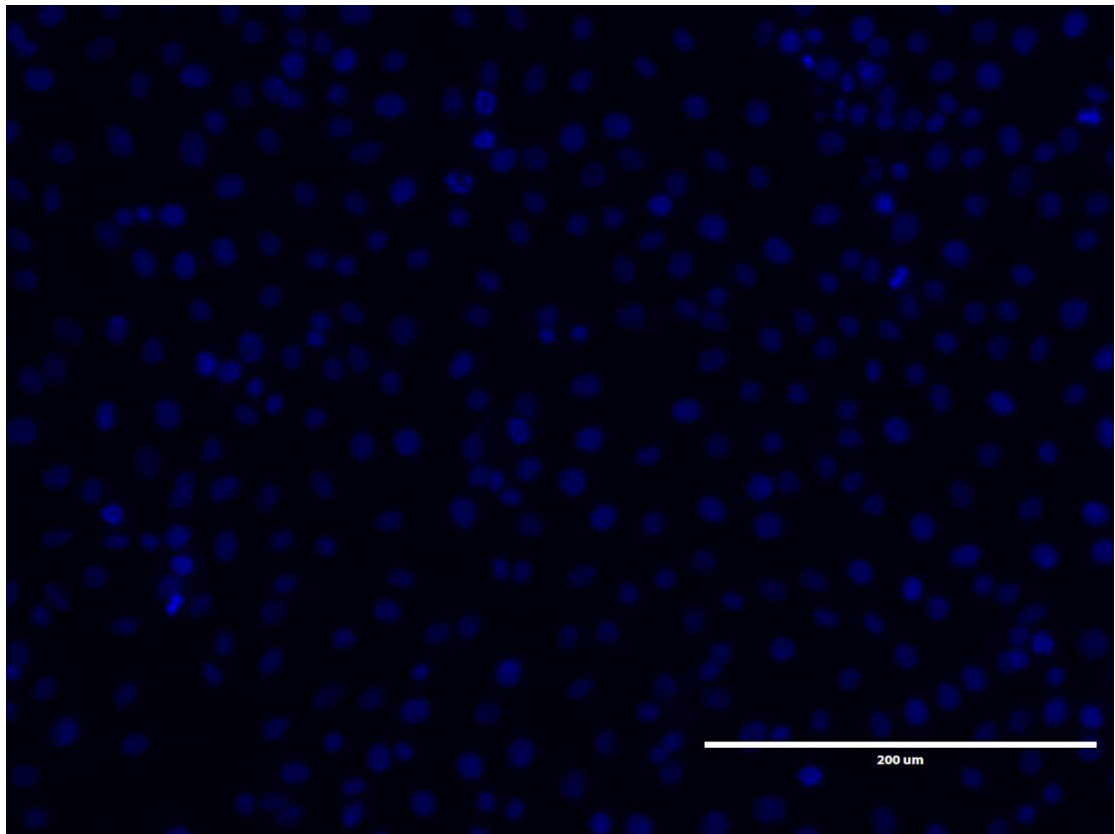
Supplementary Figure 4B DAPI1



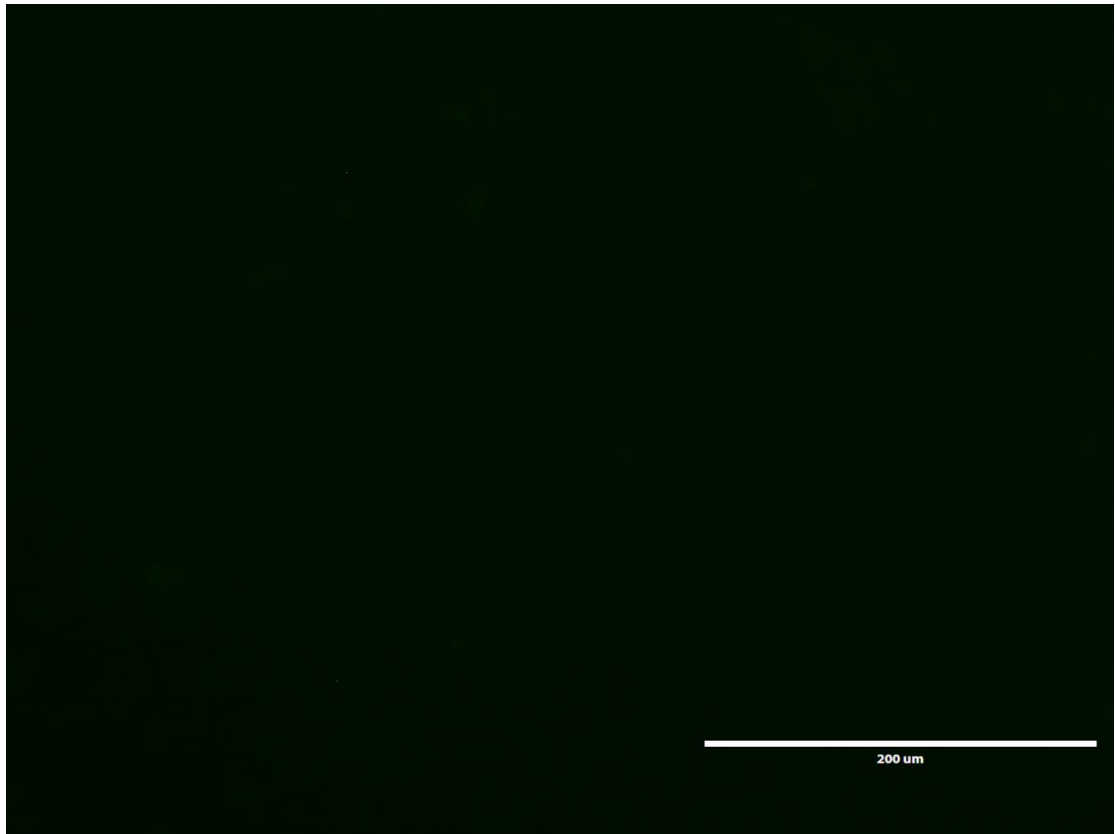
Supplementary Figure 4B FITC1



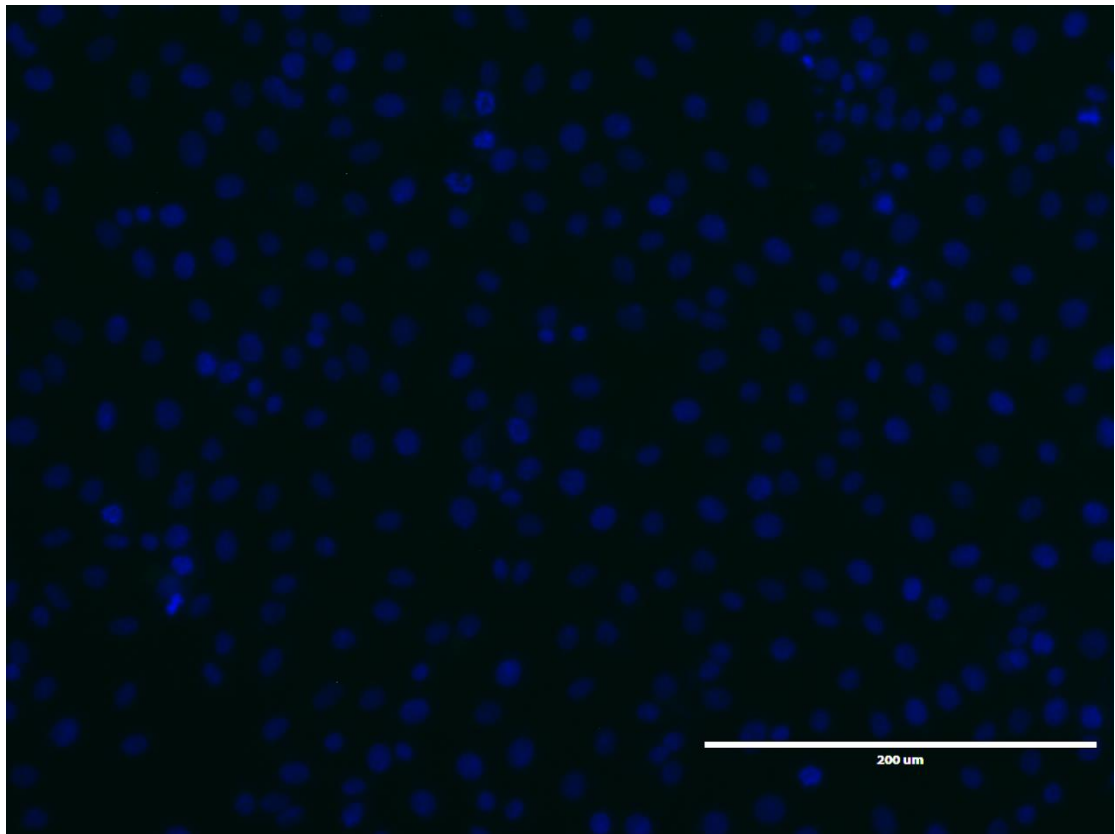
Supplementary Figure 4B Merge1



Supplementary Figure 4B DAPI2



Supplementary Figure 4B FITC2



Supplementary Figure 4B Merge2