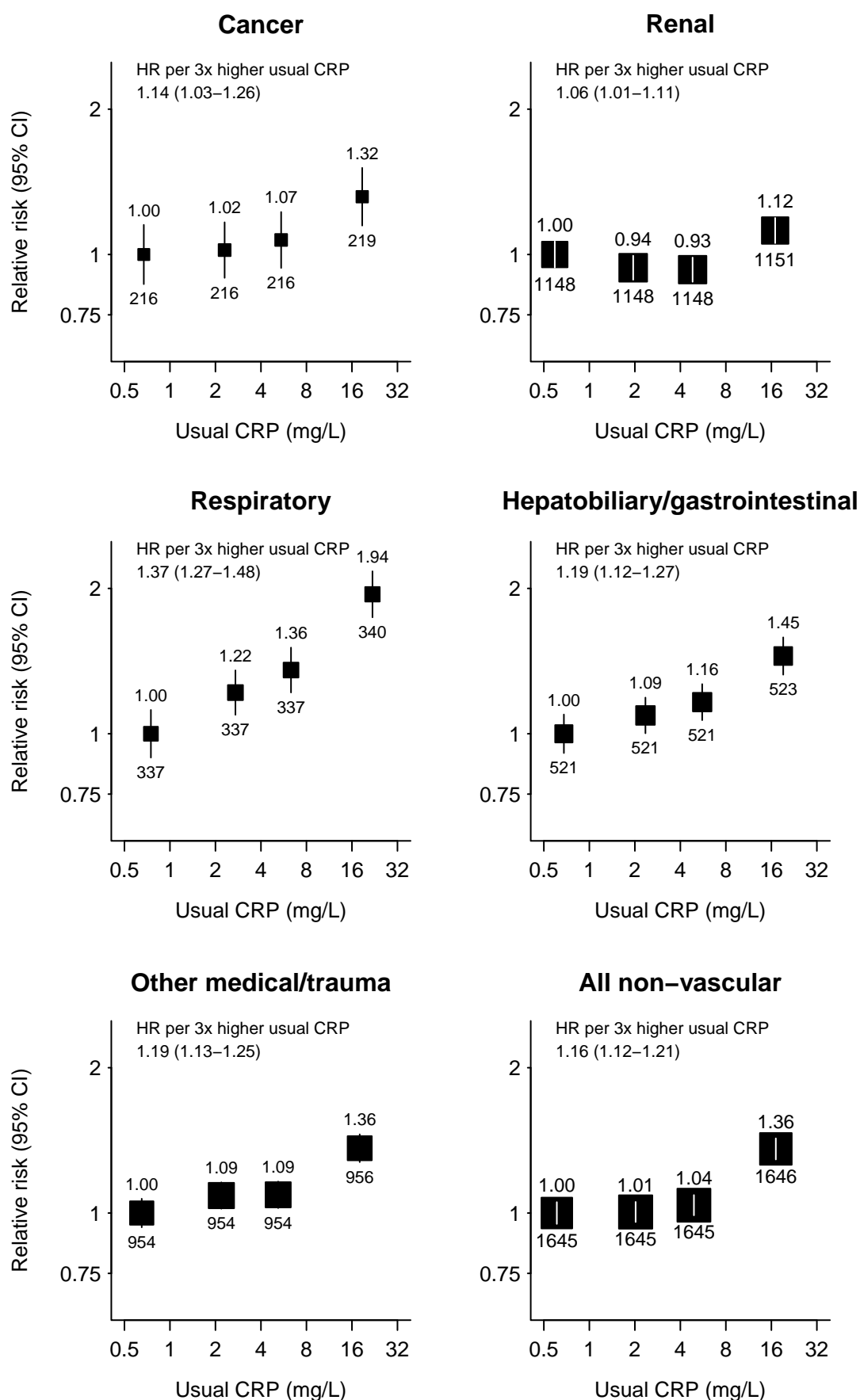


Supplementary Figure S5: Association between C-reactive protein and the risk of non-vascular events



CRP=C-reactive protein. Hazard ratios adjusted for age, sex, ethnicity, treatment allocation, prior diabetes, prior vascular disease, smoking, BMI, HDL cholesterol and renal status are quoted (above squares) with numbers of events (below). Average HR (95% CI) throughout the range of values studied (i.e. assuming a log-log-linear relationship), corresponding to about a 1 SD difference in usual log CRP.