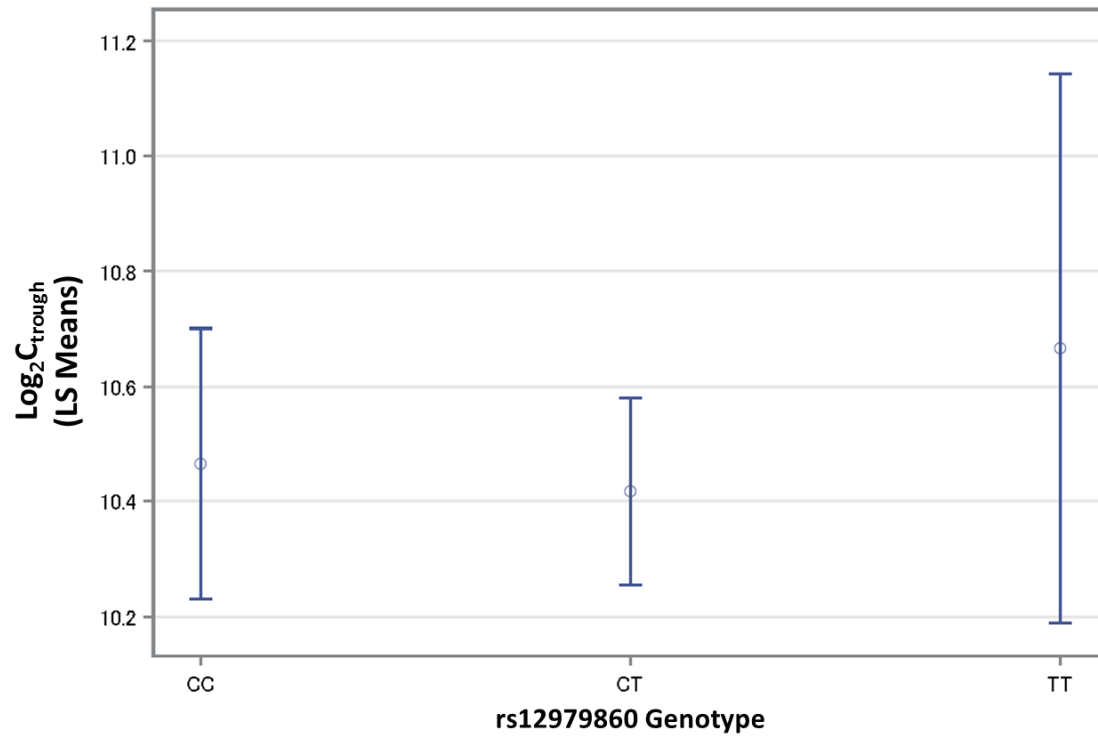


S4 Fig. Log₂C_{trough} Least Square means by rs12979860 Genotype



S4 Fig. The least square means were calculated for Log₂(C_{trough}) for ribavirin using age, sex, arm, ITPase function for the *rs12979860* genotype. Circles indicate the LS means, error bars indicate the 95% confidence interval of the LS-means. We found no significant differences between the three genotypes for Log₂(C_{trough}) values for ribavirin.