

Supplementary information

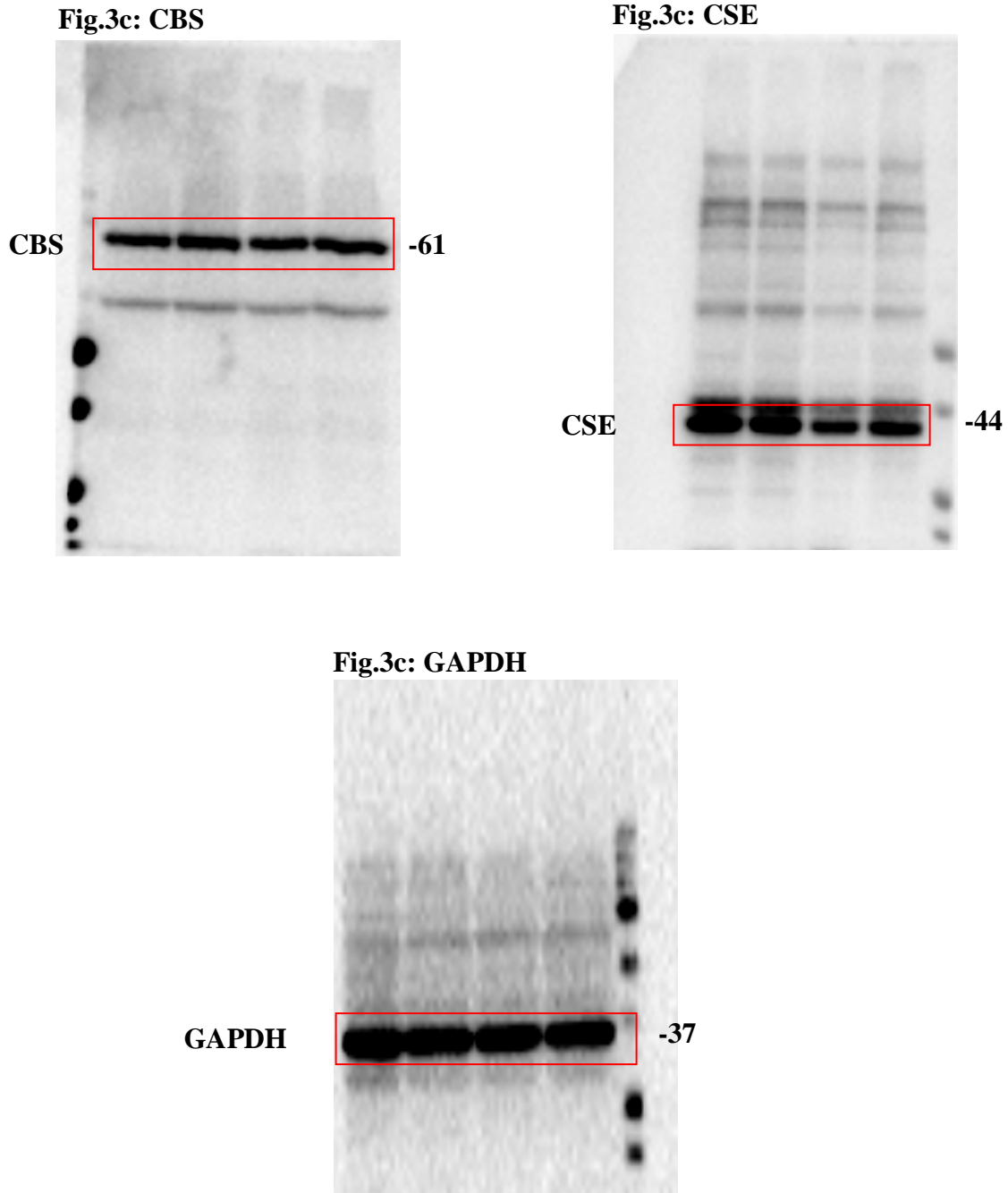
(Full length blots/gels for main figures in the paper)

Exercise Mitigates Alcohol Induced Endoplasmic Reticulum Stress Mediated Cognitive Impairment through ATF6-Herp Signaling

Akash K. George¹, Jyotirmaya Behera¹, Kimberly E. Kelly¹, Nandan K. Mondal¹, Kennedy P. Richardson¹, Neetu Tyagi^{1,*}

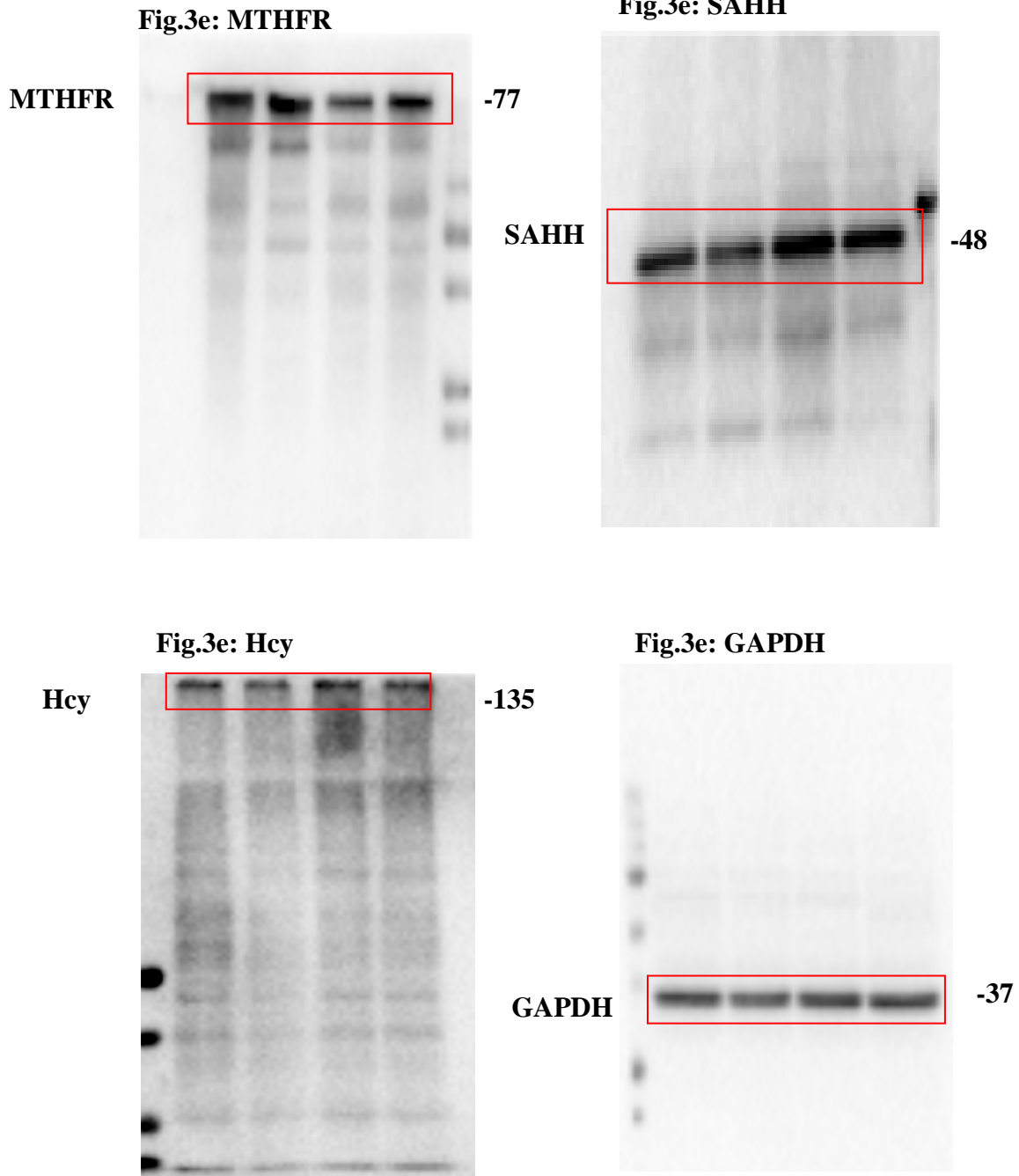
¹*Department of Physiology, University of Louisville School of medicine, Louisville, KY 40202*

Full-length blots for Figure 3



Supplementary Fig. S1: Uncropped gels/blots for main Figs. 3c. Boxed regions are used in the main figures. For some data, transferred membranes were horizontally cut for applying multiple antibodies. Lanes for unrelated samples are deleted. Lanes from left to right in red box: CT, EX, AL, AL+EX.

Full-length blots for Figure 3



Supplementary Fig. S2: Uncropped gels/blots for main Figs. 3c. Boxed regions are used in the main figures. For some data, transferred membranes were horizontally cut for applying multiple antibodies. Lanes for unrelated samples are deleted. Lanes from left to right in red box: CT, EX, AL, AL+EX.

Full-length blots for Figure 4

Fig.4a: CAT

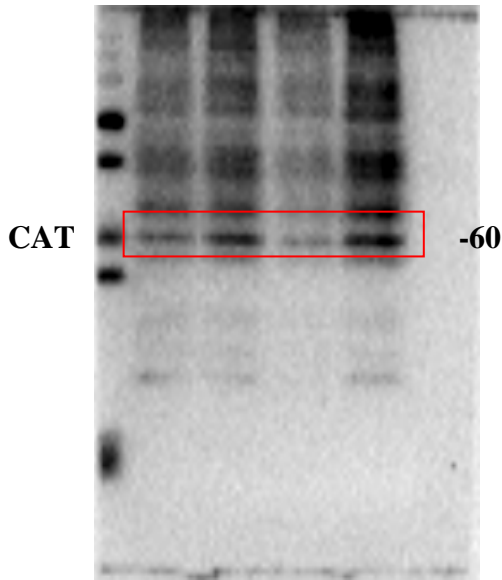


Fig.4a: NOX4

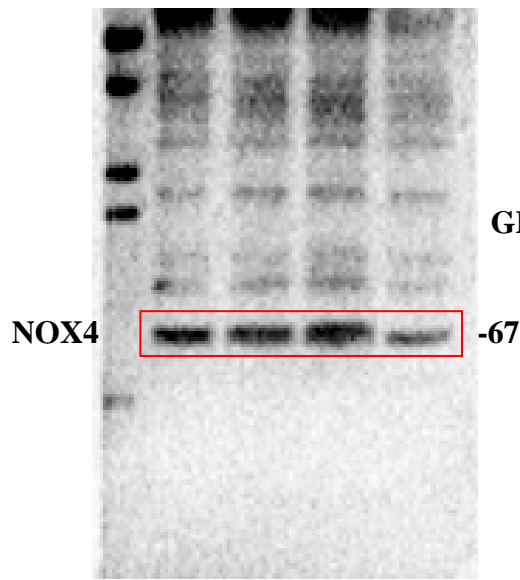


Fig.4f: GRP78

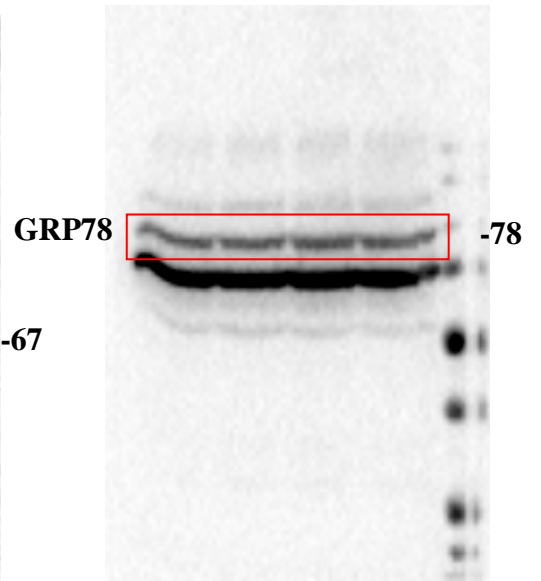


Fig.4f: ATF6

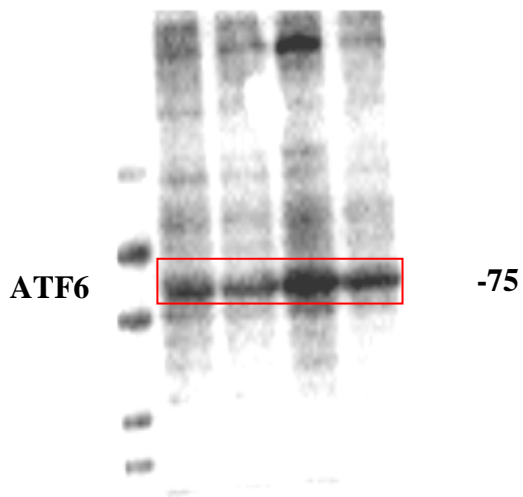
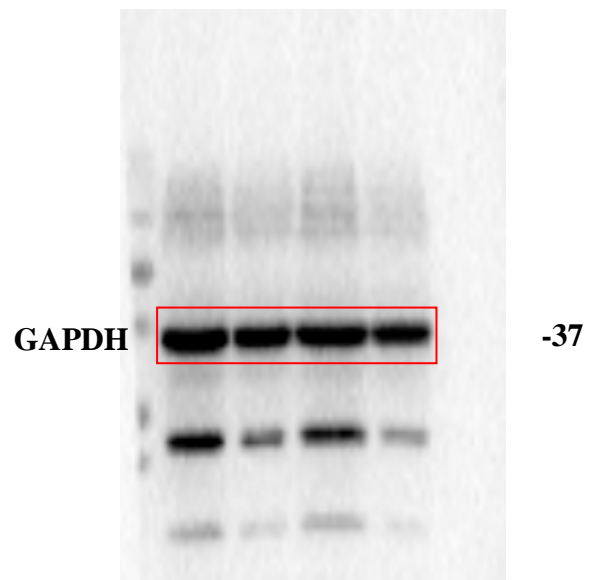


Fig.4a,f: GAPDH



Supplementary Fig. S3: Uncropped gels/blots for main Figs. 4a,f. Boxed regions are used in the main figures. For some data, transferred membranes were horizontally cut for applying multiple antibodies. Lanes for unrelated samples are deleted. Lanes from left to right in red box: CT, EX, AL, AL+EX.

Full-length blots for Figure 5

Fig.5a: DNMT1

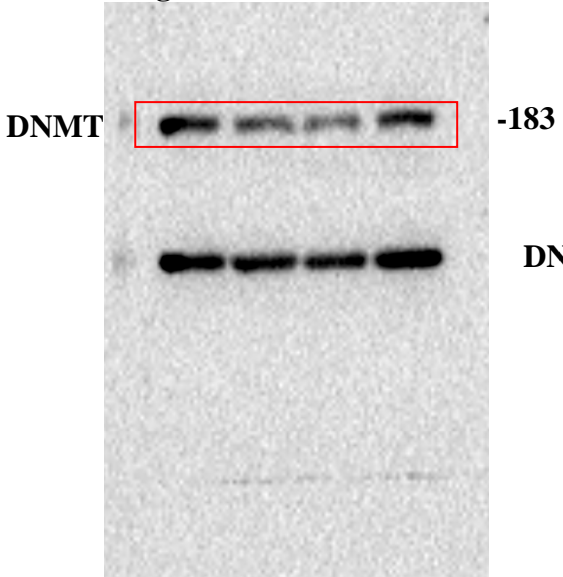


Fig.5a: DNMT3a

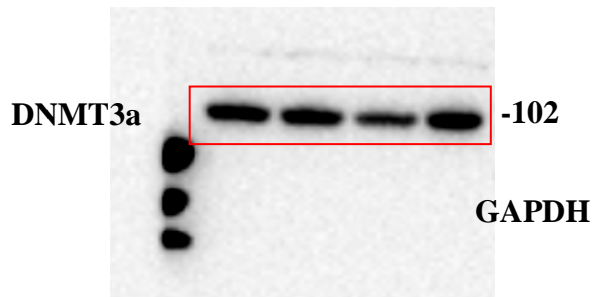


Fig.5a: GAPDH

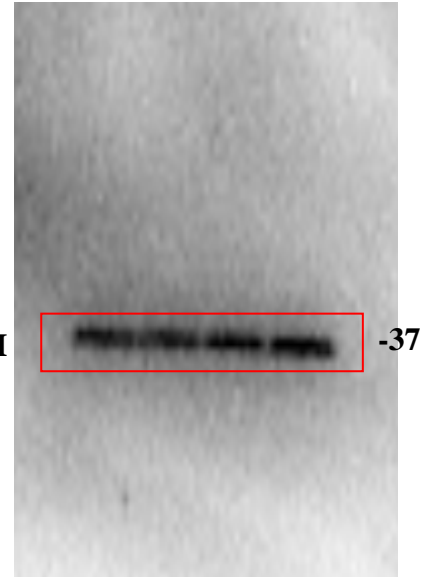


Fig.5e: Herp chip

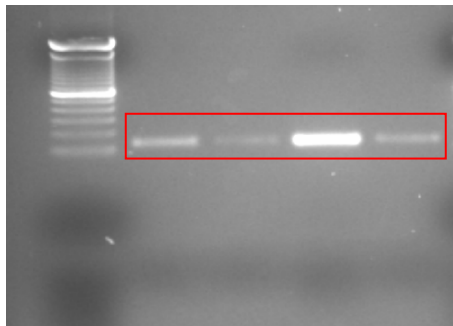
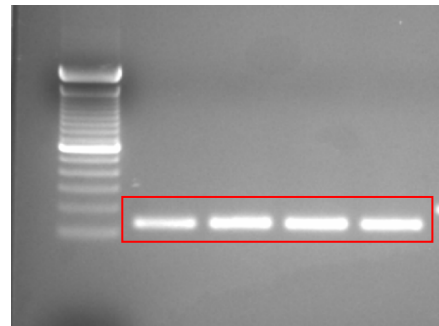
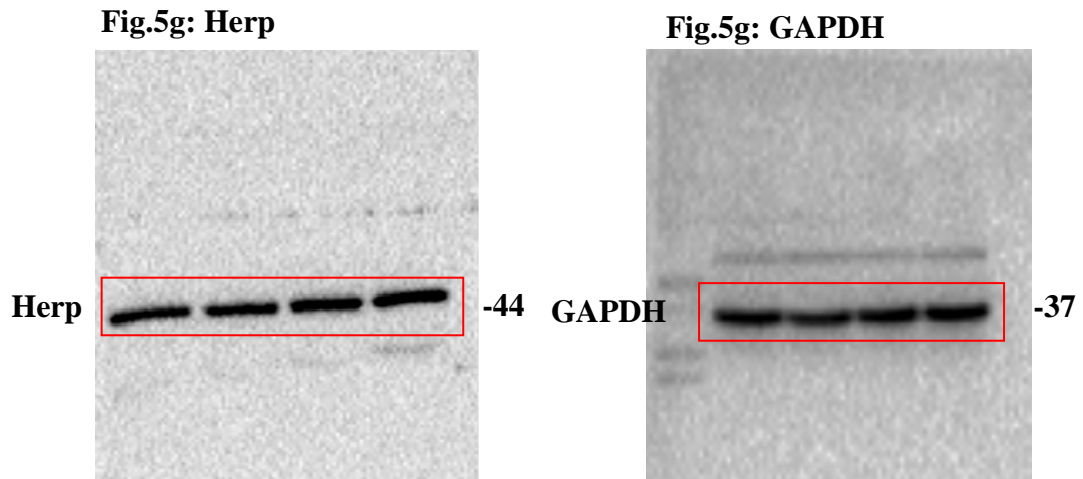


Fig.5e: Input DNA



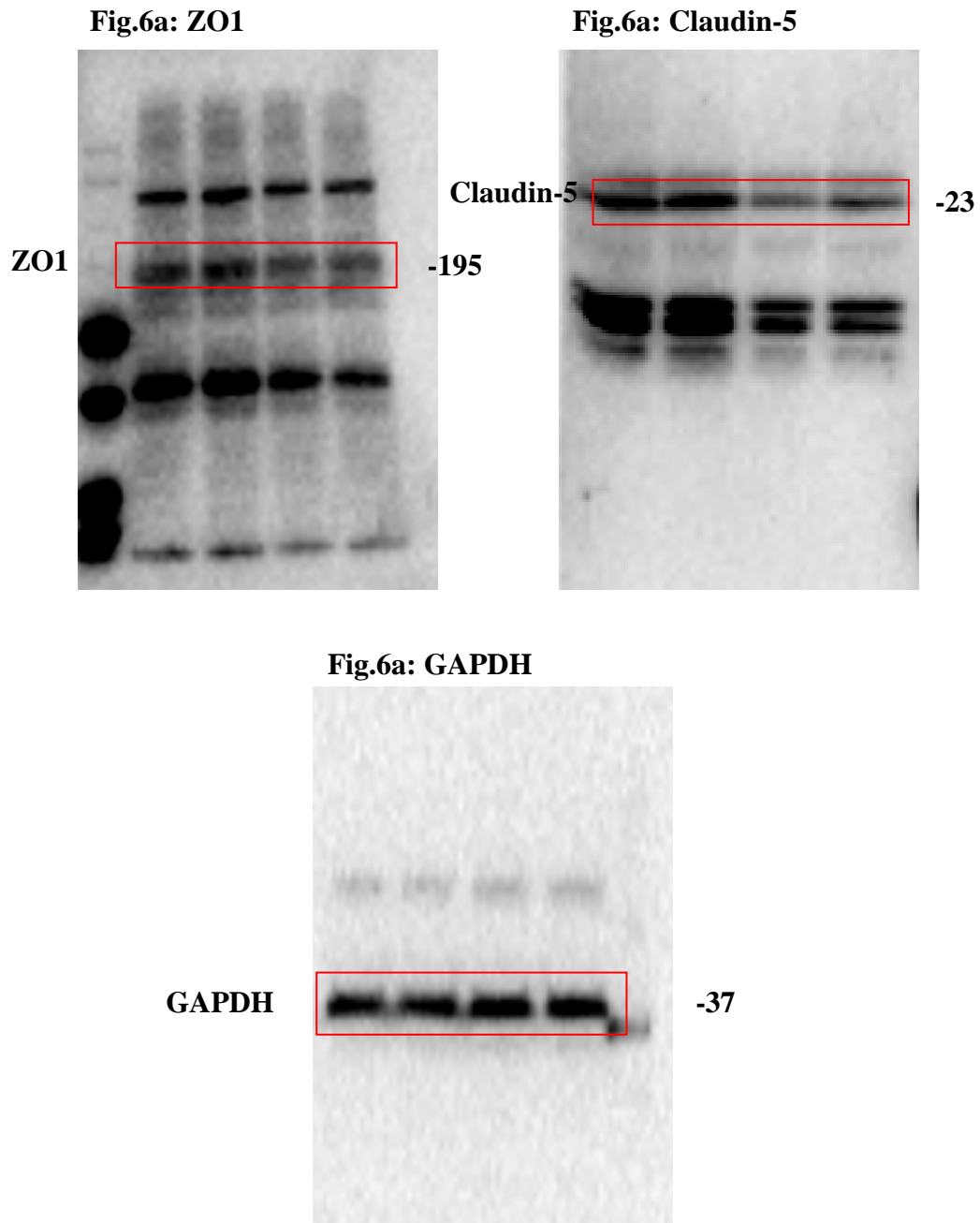
Supplementary Fig. S4: Uncropped gels/blots for main Figs. 5a,e. Boxed regions are used in the main figures. For some data, transferred membranes were horizontally cut for applying multiple antibodies. Lanes for unrelated samples are deleted. Lanes from left to right in red box: CT, EX, AL, AL+EX.

Full-length blots for Figure 5



Supplementary Fig. S5: Uncropped gels/blots for main Figs. 5g. Boxed regions are used in the main figures. For some data, transferred membranes were horizontally cut for applying multiple antibodies. Lanes for unrelated samples are deleted. Lanes from left to right in red box: CT, EX, AL, AL+EX.

Full-length blots for Figure 6



Supplementary Fig. S6: Uncropped gels/blots for main Figs. 6a. Boxed regions are used in the main figures. For some data, transferred membranes were horizontally cut for applying multiple antibodies. Lanes for unrelated samples are deleted. Lanes from left to right in red box: CT, EX, AL, AL+EX.

Full-length blots for Figure 6

Fig.6i: VE-Cadherin



Fig.6i: Claudin-5

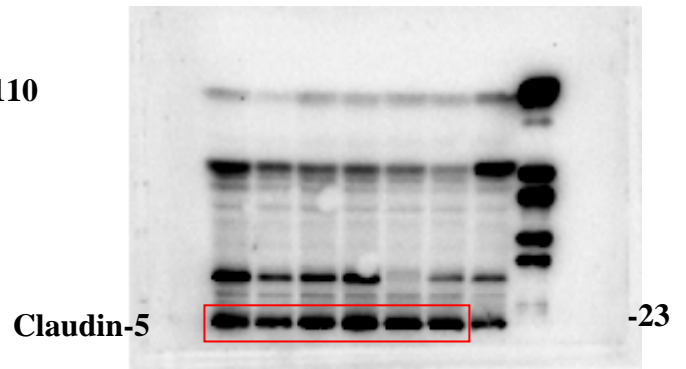


Fig.6i: ZO2

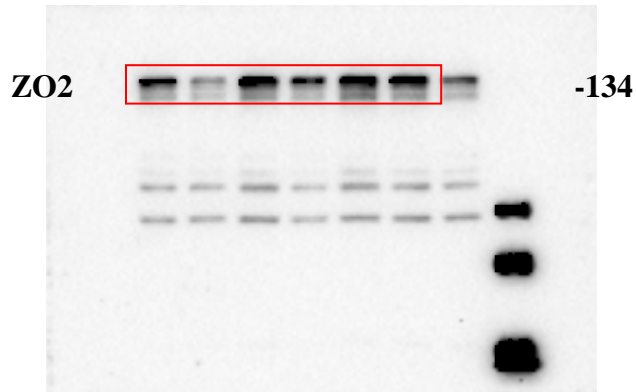
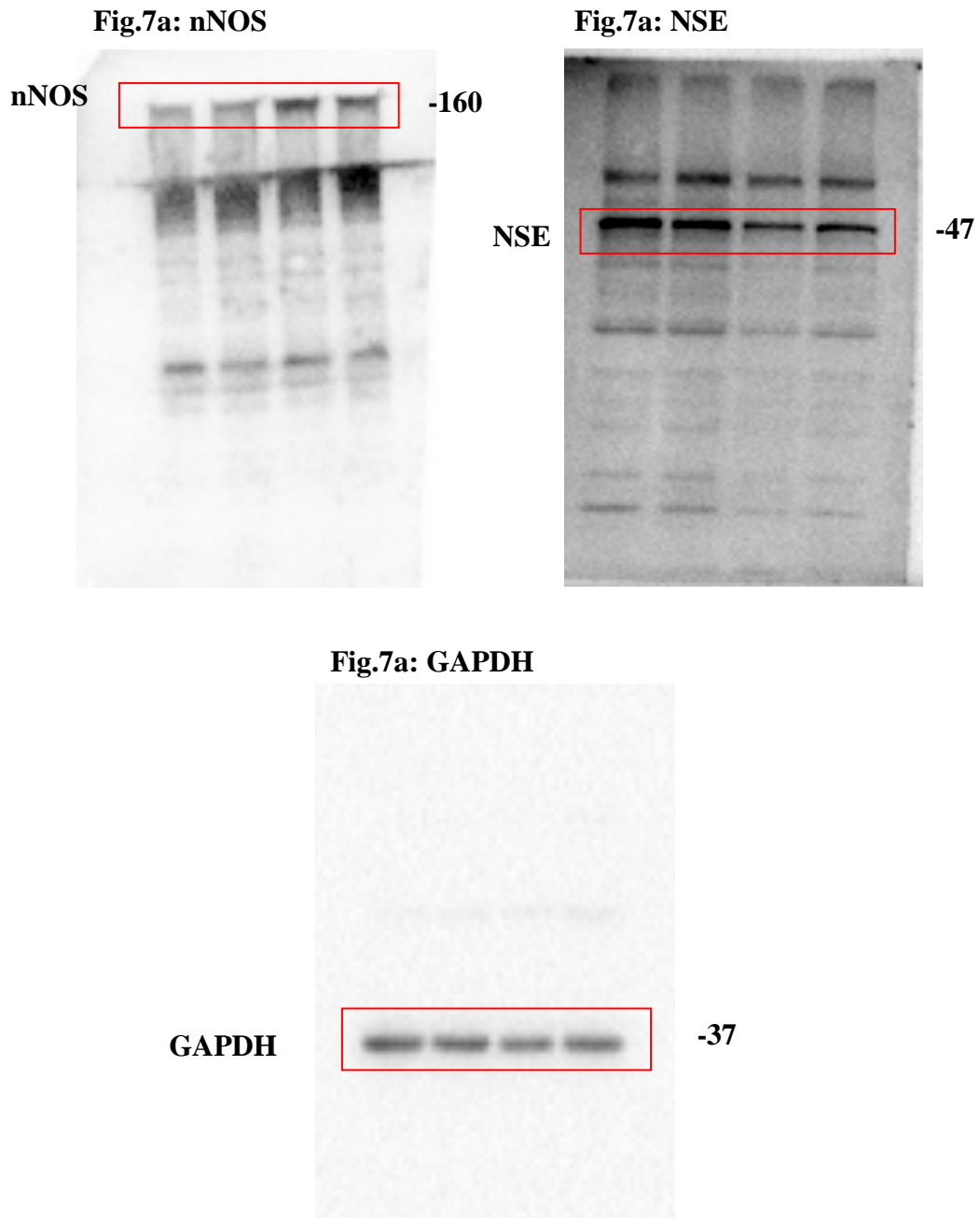


Fig.6i: GAPDH



Supplementary Fig. S7: Uncropped gels/blots for main Figs. 6i. Boxed regions are used in the main figures. For some data, transferred membranes were horizontally cut for applying multiple antibodies. Lanes for unrelated samples are deleted. Lanes from left to right in red box: CT, AL, H₂S, AL+H₂S, DTT, AL+DTT.

Full-length blots for Figure 7



Supplementary Fig. S8: Uncropped gels/blots for main Figs. 7a. Boxed regions are used in the main figures. For some data, transferred membranes were horizontally cut for applying multiple antibodies. Lanes for unrelated samples are deleted. Lanes from left to right in red box: CT, EX, AL, AL+EX.