

**Supplemental Material S2.** Complete case-based quiz utilized to assess correct implementation of the canine daily bleeding score assessment tool, DOGiBAT.

### DOGiBAT Training Quiz

1

#### Scoring

- The score for the highest grade is entered into the appropriate section
- The grades are not additive
  - E.g. oral petechia = score of 1  
oral bleeding = score of 2  
\* if both are present, score is = 2 (not 3)

2

#### Scoring the Cases

- Before starting: please **open** or **print** the “Daily Bleeding Assessment Tool (DOGiBAT Cases)” document
- While going through the cases: please fill out the grade columns for each case (Case 1, 2, & 3) and add the results together to obtain the total score for that individual case

3

**Case #1**

- “Penny”, a 4 year old SF mixed breed dog, was presented for bilateral epistaxis.



4

**Case #1**

- You perform your physical exam. This is her ventral abdomen.



5

**Case #1**

- This is her left ear.



6

**Case #1**

- An IV catheter is placed.



7

**Case #1**

- The IV catheter was placed without further hemorrhage.



8

**Case #1**

- You perform an oral exam.



9

**Case #1**

- Followed by an ocular exam.



10

**Case #1**

- Penny is walked outside so a urine sample can be caught for UA, and she defecated.



11

### Case #1

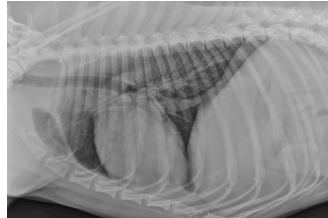
- A voided urine sample was collected for urinalysis.



12

### Case #1

- Thoracic radiographs were obtained to look for underlying causes of suspected ITP.



13

### Case #1

- Penny's mentation was deemed normal, as were her cranial nerves.



14

### End of Case #1

- Please add the grade results together to obtain the total score for Case #1

15

**Case #2**

- “Bentley”, a 6 year old MC cockapoo, was presented for lethargy and melena.



16

**Case #2**

- This is the medial side of his left hindlimb prior to phlebotomy.



17

**Case #2**

- A second petechia noted on the right hindlimb, however no other cutaneous petechiae were noted.



18

**Case #2**

- An IV catheter was placed with no bleeding or complications.



19

Case #2

- This is his oral exam.



20

Case #2

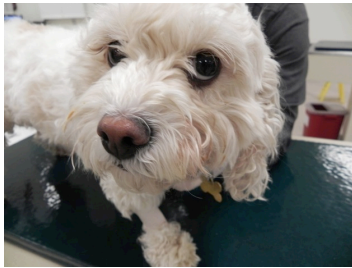
- You perform a complete ocular exam (including a funduscopic exam).



21

Case #2

- No epistaxis noted.



22

Case #2

- Immediately after the physical exam, Bentley defecated on the exam room floor.



23

### Case #2

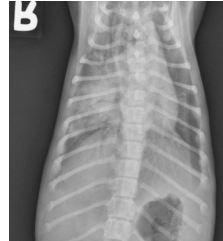
- You collect a voided urine sample and perform a urine dipstick.



24

### Case #2

- You perform thoracic radiographs as part of his diagnostic work-up.



25

### Case #2

- Bentley was a little quiet, but his mentation and cranial nerves were normal.



26

### End of Case #2

- Please add the grade results together to obtain the total score for Case #2

27

### Case #3

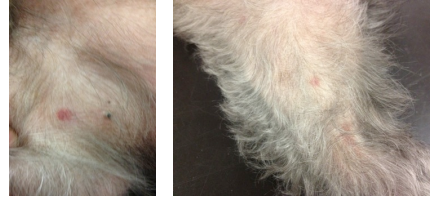
- Duke, a 2 year old CM boxer, was presented for evaluation of ocular hemorrhage.



28

### Case #3

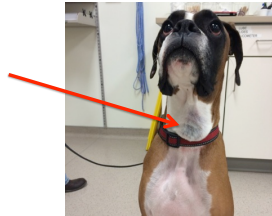
- This is the medial side and the lateral side of Duke's left hindlimb.



29

### Case #3

- Phlebotomy is performed. A large hematoma develops from the blood draw, so a pressure wrap was placed. It was removed after 5 minutes, and the hematoma was not enlarging.



30

### Case #3

- This is his oral exam.

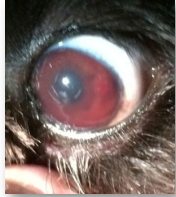


31



Case #3

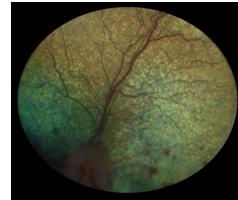
- This is Duke's left eye.



32

Case #3

- You perform a fundic exam on his right eye (the other eye).



33

Case #3

- No epistaxis has been reported, but a small amount of bloody discharge is noted at each nares.



34

Case #3

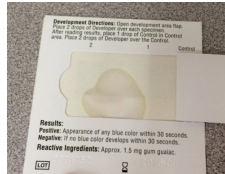
- Duke has an episode of vomiting in the exam room.



35

### Case #3

- Because of the vomit, you perform a fecal occult blood test (Hema-chek).



36

### Case #3

- A voided urine sample was collected.

#### Urinalysis

Test	Specimen: Urine-Void	Result
Collection		voided
Volume		4.0
Color		Pale Yel
Transparency		Hazy
Specific Gravity		1.015
Glucose (urine)		negative
Bilirubin		negative
Ketones		negative
Blood		Trace
pH Urine		6.0
Protein		2+

37

### Case #3

- Cardiopulmonary auscultation was within normal limits.
- Duke's mentation was appropriate and cranial nerves were normal.

38

### End of Case #3

- Please add the grade results together to obtain the total score for Case #3

39

### Scoring the Cases

- Please make sure all site grades are filled out
- Add up the site grades to determine the total score for each individual case

40

Thank you for participating!

41