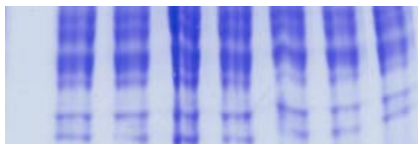
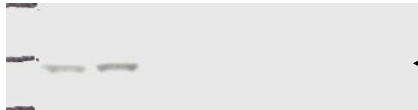


**A****Anti-p38 $\alpha$** **Anti-p38 $\beta$** **p38 $\alpha$** **p38 $\beta$** **p38 $\beta$** **p38 $\beta$** **p38 $\alpha$** **Blackswiss****p38 $\beta$** **p38 $\beta$** **Blackswiss****Blackswiss****Blackswiss****p38 $\alpha$** **p38 $\alpha$** **B***Molecular weight marker**Mouse heart cDNA**p38 $\beta$  cDNA plasmid (positive control)**Negative control**Negative Control  
Calsequestrin**Negative Control  
L-Type Ca Channel**Molecular Weight Marker  
Negative Control**Na-Ca Exchanger (NCX)**Ryanodine receptor (RyR)***P38 $\beta$** 