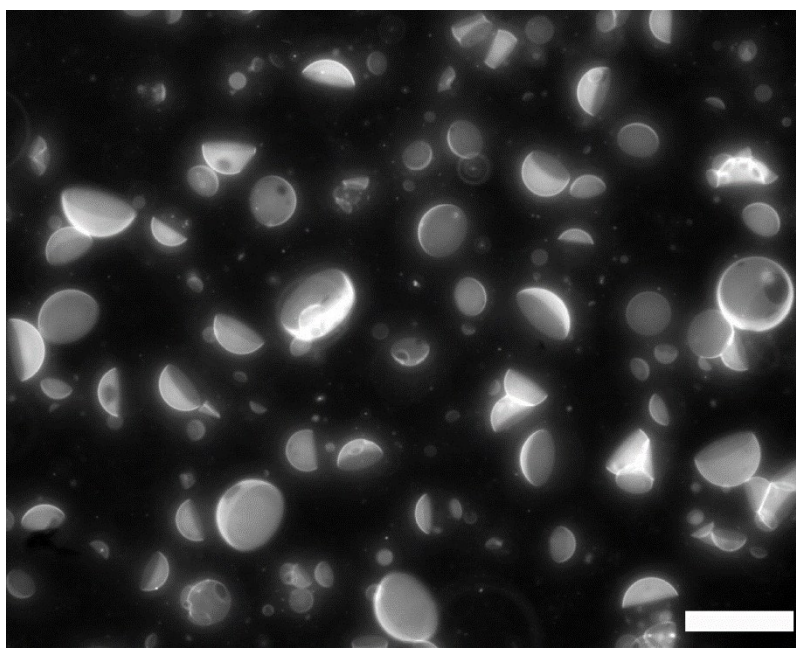


## Supplementary Information

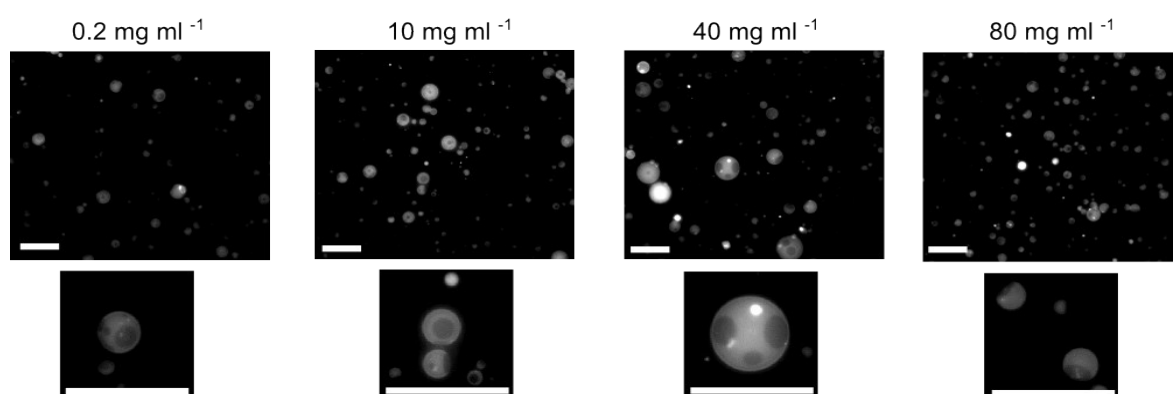
### Engineering thermoresponsive phase separated vesicles formed via emulsion phase transfer as a content-release platform

Kaiser Karamdad<sup>ab†</sup>, James W. Hindley<sup>ab†</sup>, Guido Bolognesi<sup>c</sup>, Mark S. Friddin<sup>a</sup>, Robert V. Law<sup>ab</sup>, Nicholas J. Brooks<sup>ab</sup>, Oscar Ces<sup>ab\*</sup> and Yuval Elani<sup>ab\*</sup>

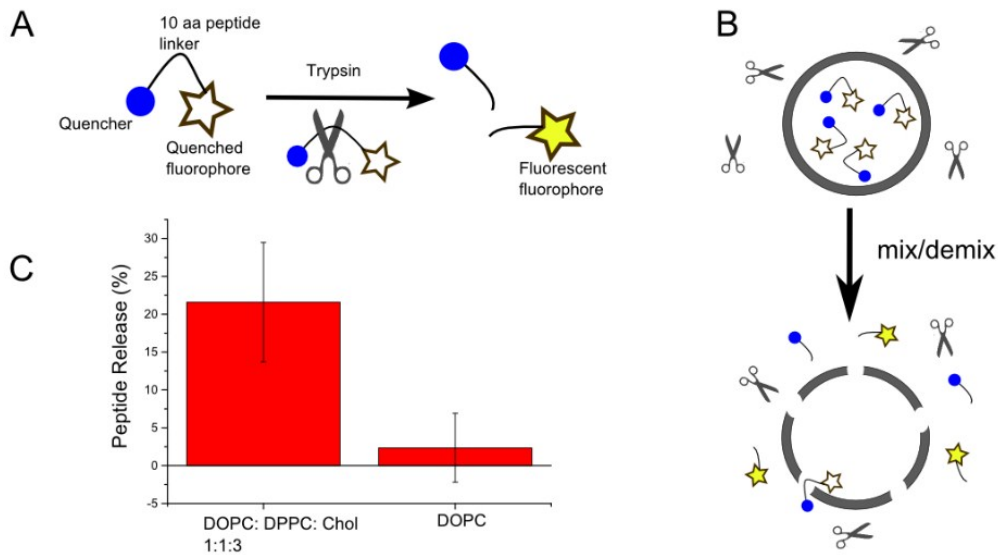
#### Supplementary Figures



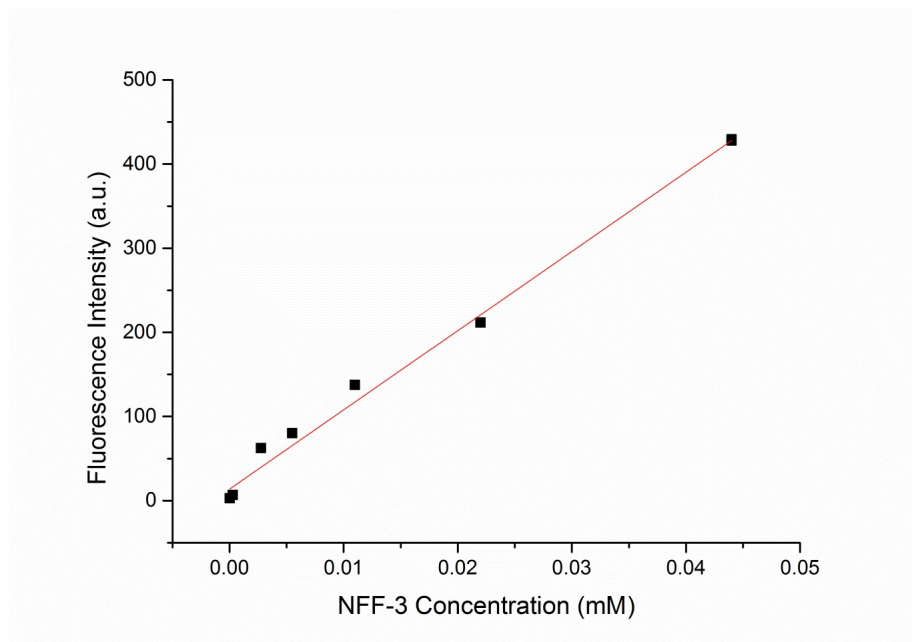
**Figure S1. Representative fluorescence image of GUV population formed via emulsion phase transfer showing uniform domain morphology.** Composition = DOPC: DPPC: Chol, 1:1:3. Scale bar = 20  $\mu\text{m}$ .



**Figure S2. Effect of changing absolute concentration of lipid-in-oil on domains in GUVs formed via emulsion phase transfer.** Fluorescence microscopy images of DOPC:DPPC:Chol 1:1:3 vesicles at different total lipid concentrations are shown.  $L_o/L_d$  domains were seen at all concentrations. Images below are zoomed in areas of the images above. Scale bar for all images = 50  $\mu\text{m}$ .



**Figure S3. Peptide molecules can be released from ternary GUVs.** (A) NFF-3 is a fluorogenic peptide that can be cleaved by the protease trypsin. An N-terminal fluorophore is quenched via FRET by a C-terminal dinitrophenol group, and upon proteolysis a fluorescent signal is generated. (B) The fluorogenic properties of NFF-3 enables the design of an enzymatic leakage assay, where peptide-loaded GUVs are taken through a heating cycle. If peptide can escape during the mix/demix cycle, trypsin present in external solution can proteolyse the peptide, generating signal that can be monitored. (C) Peptide release can be triggered from ternary vesicles by applying a heating cycle. Minimal release is observed in DOPC vesicles lacking such domain structure. Errors bars represent 1 s.d. n=9 for ternary vesicles, n=4 for DOPC vesicles.



**Figure S4. NFF-3 fluorescence Calibration Curve.** Within the concentration range used in the peptide release experiments above (0.015 mM), NFF-3 fluorescence varies linearly with concentration. Error bars represent 1 s.d., n=3,  $r^2=0.99667$ .