

## Appendix for

### SUPERMAN regulates floral whorl boundaries through control of auxin biosynthesis

**Authors:** Yifeng Xu<sup>1,2</sup>, Nathanaël Prunet<sup>3,4,5</sup>, Eng-Seng Gan<sup>1</sup>, Yanbin Wang<sup>1</sup>, Darragh Stewart<sup>6</sup>, Frank Wellmer<sup>3,6</sup>, Jiangbo Huang<sup>1,7</sup>, Nobutoshi Yamaguchi<sup>2,8</sup>, Yoshitaka Tatsumi<sup>2</sup>, Mikiko Kojima<sup>8,9</sup>, Takatoshi Kiba<sup>8,9</sup>, Hitoshi Sakakibara<sup>8,9</sup>, Thomas P. Jack<sup>5</sup>, Elliot M. Meyerowitz<sup>3,4</sup>, Toshiro Ito<sup>1,2,3,7</sup>

Correspondence to Toshiro Ito: itot@bs.naist.jp

#### Table of contents

**Appendix Figure S1** The expression of the functional *pSUP::SUP-3xVENUS* and *pSUP::SUP-GFP*

**Appendix Figure S2** Auxin is increased in *sup-5*

**Appendix Figure S3** The *sup-5* mutant phenotype is rescued by NPA treatment

**Appendix Figure S4** The morphology of *sup-5 pSUP::SUP-GR* plants after mock or DEX treatment

**Appendix Figure S5** The morphology of *p35S::SUP-GR* in different genetic backgrounds before and after DEX treatment

**Appendix Figure S6** The active histone modification H3K4me3 at the *YUC1/4* loci is increased in *sup*

**Appendix Figure S7** The coding regions of *YUC1* and *YUC4* prevent ectopic expression in the inflorescences

**Appendix Figure S8** *DR5* activity is reduced in *sup-5 yuc1*

**Appendix Figure S9** The *pPIN3::PIN3-GFP* expression pattern is not changed in *sup-5*

**Appendix Figure S10** The interaction between SUP with PcG components CLF and TFL2

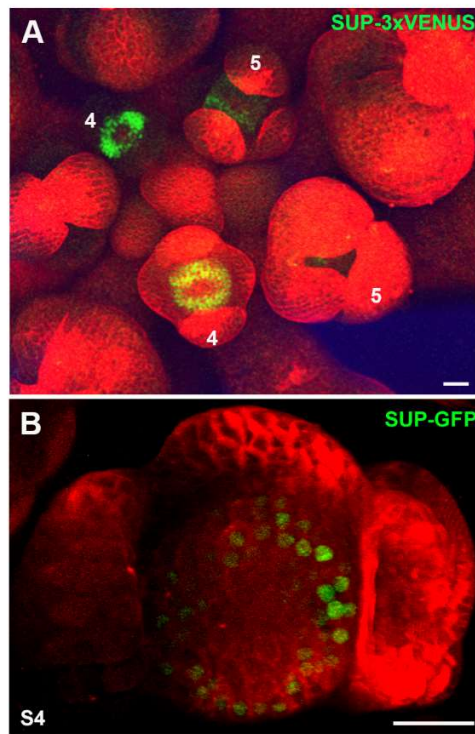
**Appendix Figure S11** Spatial distribution of reporters at stage 4 floral buds in WT and *sup*

**Appendix Table S1** List of the down-regulated hormone metabolic process genes after the DEX treatment in the inflorescence of *p35S::SUP-GR*

**Appendix Table S2** List of the primers

**Appendix Table S3** List of genes showing a 2.0-fold change in expression after DEX treatment in the inflorescence of *p35S::SUP-GR*

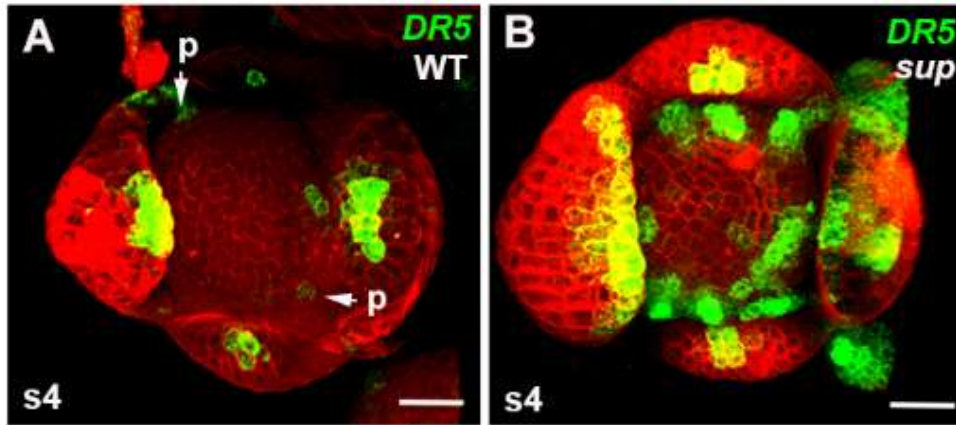
## Appendix Figure S1



### Appendix Figure S1. The expression of the functional *pSUP::SUP-3xVENUS* and *pSUP::SUP-GFP*

(A) The expression of SUP-3xVENUS-N7 (green) in an inflorescence stained with FM 4-64 dye (red). *SUP* expression appears during late stage 3 (s3) but declines after stage 4 (s4); however, *SUP* expression is still detectable at stage 5 (s5). (B) The expression of SUP-GFP (green) with a weak signal in stage 4 floral buds stained with FM 4-64 dye (red). Scale bars, 20  $\mu$ m.

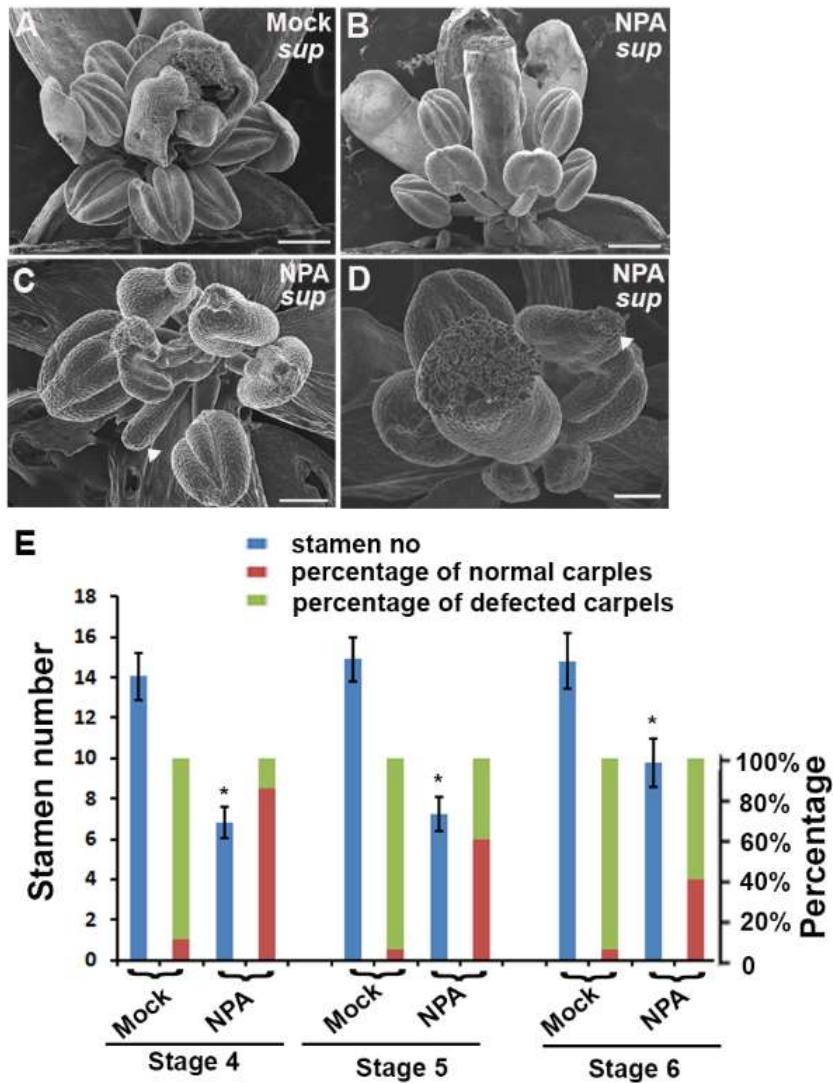
## Appendix Figure S2



### Appendix Figure S2. Auxin is increased in *sup-5*

(A-B) The expression of the auxin marker *pDR5rev::GFP-ER* in stage 4 floral buds of WT (A) and *sup-5* (B). In the WT floral bud at stage 4, the fluorescence signal was detected mostly in the tips of sepals and at the sites (p, marked with arrows) where the petal primordia would emerge at later stages (A). In contrast, there were increased numbers of cells showing auxin signals in the *sup-5* floral buds at stage 4, coinciding with the SUP-expressing regions (B). Scale bars, 20  $\mu$ m.

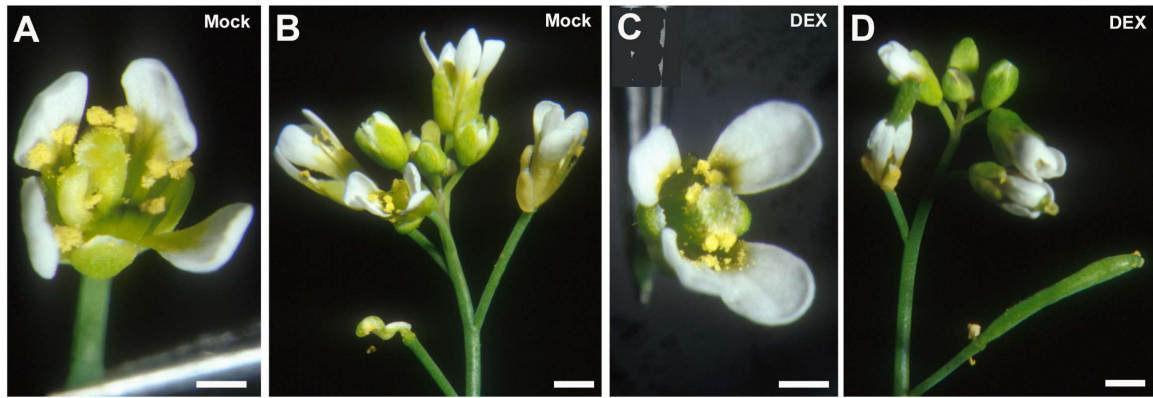
### Appendix Figure S3



### Appendix Figure S3. The *sup-5* mutant phenotype is rescued by NPA treatment.

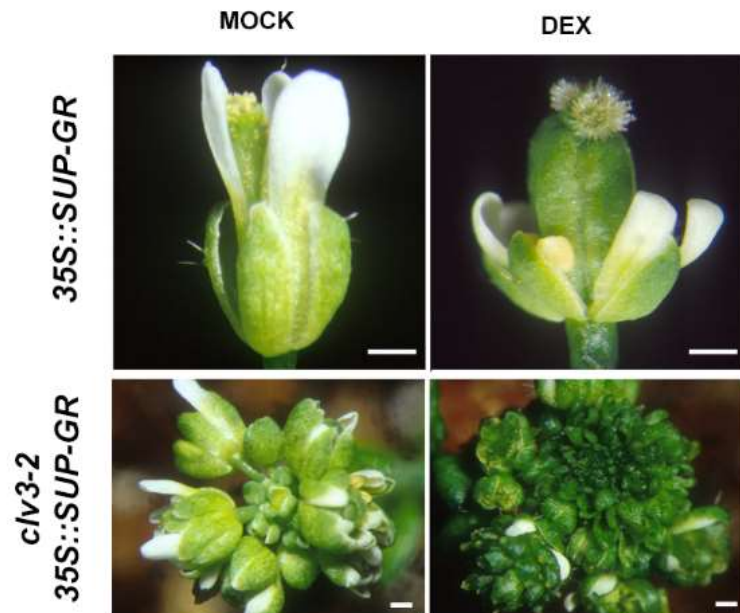
(A-D) The *sup-5* flowers after treatment with NPA (B-D) or a mock solutions (A). While the mock treatment did not affect *sup-5* flowers (A), the NPA treatment significantly rescued both carpels and stamens (B), sometimes with development arrestment (C-D). (E) The statistical analysis indicated that NPA treatment rescued stage 4-5 floral buds well, which took approximately 9-10 days to anthesis. \* indicates  $P < 0.05$  based on Student's t-test. Scale bars, 20  $\mu\text{m}$ .

### Appendix Figure S4



**Appendix Figure S4. The morphology of *sup-5 pSUP::SUP-GR* plants after mock or DEX treatment**  
**(A-B)** The *sup-5* mutant-like flower (A) and inflorescence (B) after the mock treatment. **(C-D)** The WT-like flower (C) and inflorescence (D) after the DEX treatment. Scale bars, 1 mm.

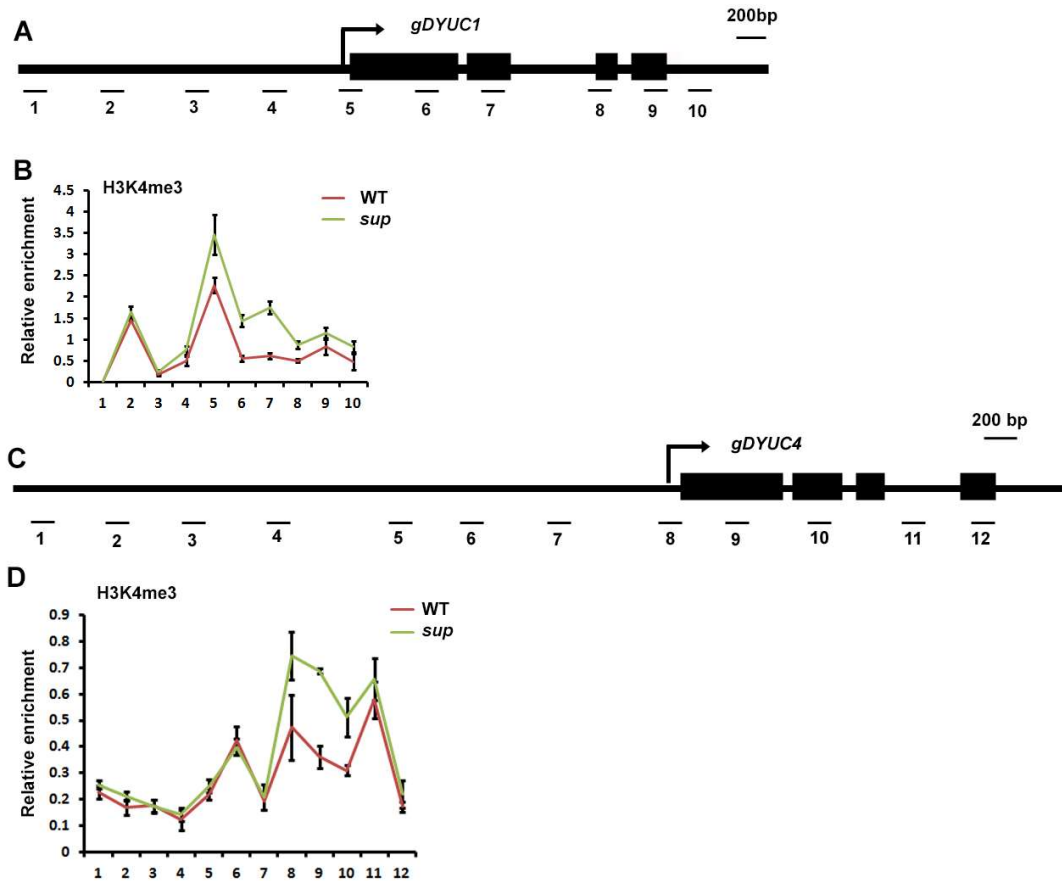
## Appendix Figure S5



**Appendix Figure S5. The morphology of *p35S::SUP-GR* in different genetic backgrounds before and after DEX treatment**

Flowers or inflorescence of *p35S::SUP-GR* before and after DEX treatment. In WT, *p35S::SUP-GR* caused the increased carpels and reduced size of floral organs after DEX treatment. In *clv3-2*, ectopic expression of SUP promoted the differentiation of leaf-like tissues. Scale bars, 1 mm.

## Appendix Figure S6

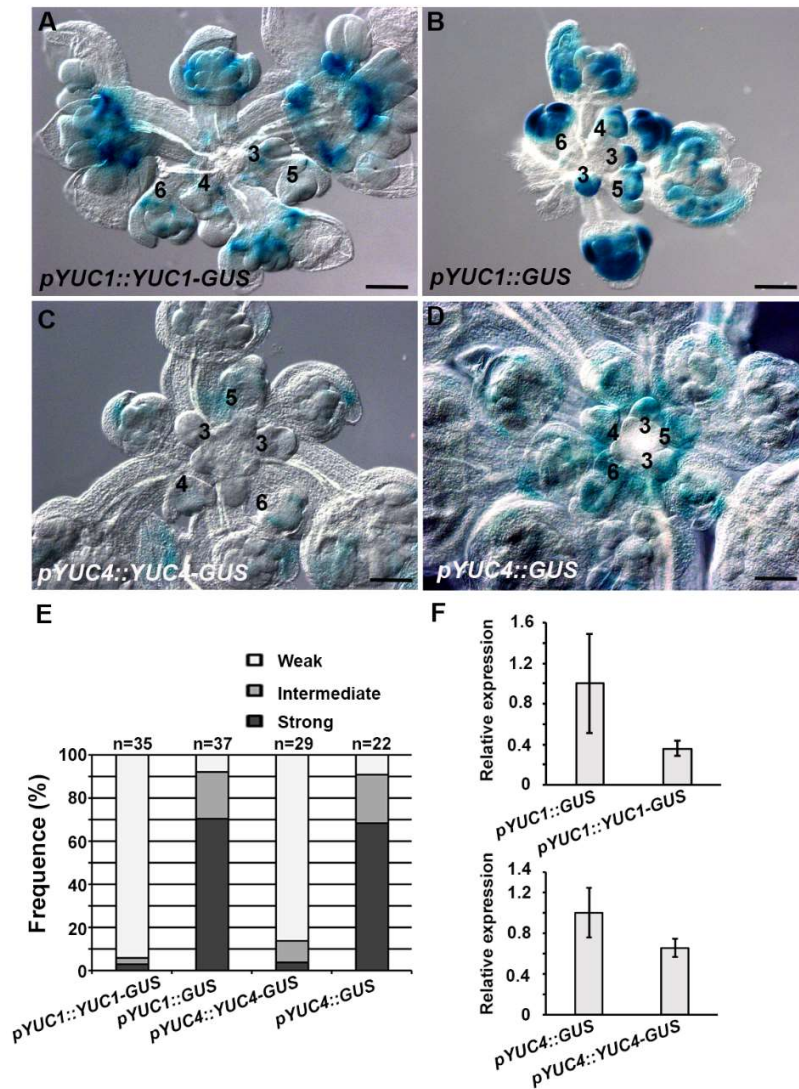


### Appendix Figure S6. The active histone modification H3K4me3 at the *YUC1/4* loci is increased in *sup*

(A) Schematic drawing of the *YUC1* genome structure showing regions of primer sets used for ChIP analyses. (B) Relative enrichment of H3K4me3 at the *YUC1* locus increased in the stage 4 floral buds of *ap1 cal p35S::API-GR sup-5* compared with that of the wild-type control from *ap1 cal p35S::API-GR*. (C) Schematic drawing of the *YUC4* gene structure showing regions amplified by primers used for ChIP analyses. (D) Relative enrichment of H3K4me3 increased at the *YUC4* locus in stage 4 floral buds of *ap1 cal p35S::API-GR sup-5* compared with that of the WT control. Error bars represent standard errors with three biological replicates.



### Appendix Figure S7



**Appendix Figure S7. The coding regions of *YUC1* and *YUC4* prevent ectopic expression in the inflorescences.**

**(A-B)** GUS staining of *pYUC1::YUC1-GUS* (A) and *pYUC1::GUS* (B) in young floral buds.

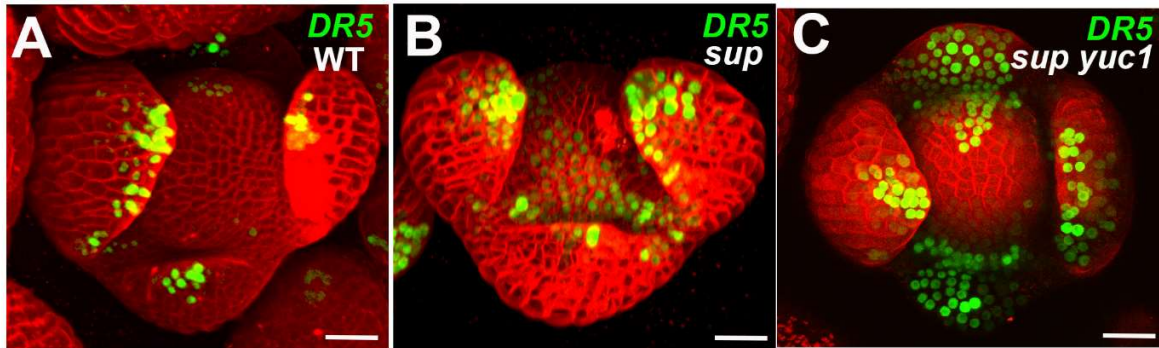
**(C-D)** GUS staining of *pYUC4::YUC4-GUS* (C) and *pYUC4::GUS* (D) in young floral buds.

**(E)** Visual scoring of *pYUC1::YUC1-GUS*, *pYUC1::GUS*, *pYUC4::YUC4-GUS* and *pYUC4::GUS* staining in the T1 population; the number (n) of tested T1 transgenic plants was listed for each construct.

**(F)** Relative expression of GUS transcript levels as determined by qRT-PCR. The GUS transcript levels in *pYUC1::GUS* and *pYUC4::GUS* are higher than those in *pYUC1::YUC1-GUS* and *pYUC4::YUC4-GUS*, respectively. Standard deviation was calculated based on the GUS transcript levels in three independent transgenic lines.

Scale bars, 0.02 mm.

## Appendix Figure S8

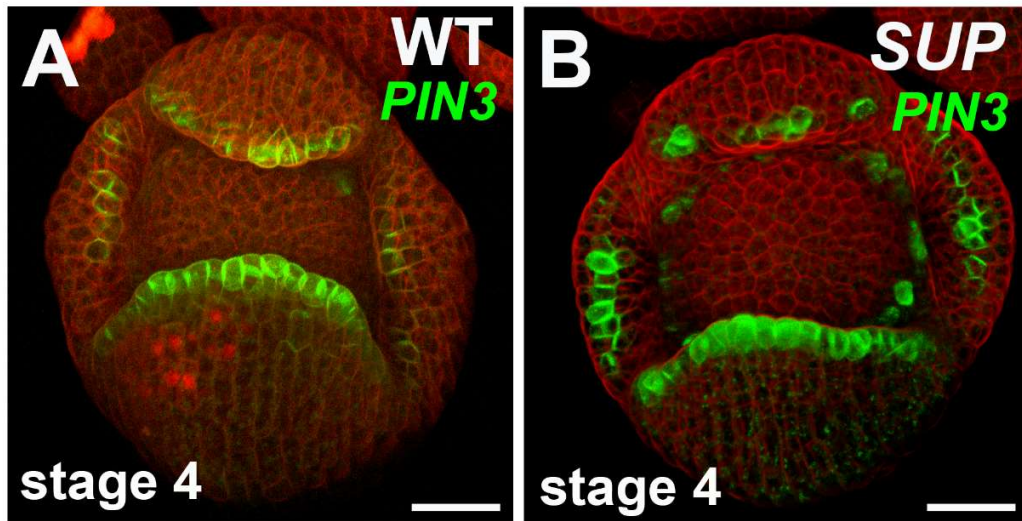


### Appendix Figure S8. *DR5* activity is reduced in *sup-5 yuc1*.

(A-C) The *pDR5rev::3xVENUS-N7* signal is reduced in *sup-5 yuc1* (C) compared with that in *sup-5* (B), but slightly more signals than that of WT (A).

Scale bars, 20  $\mu$ m.

Appendix Figure S9



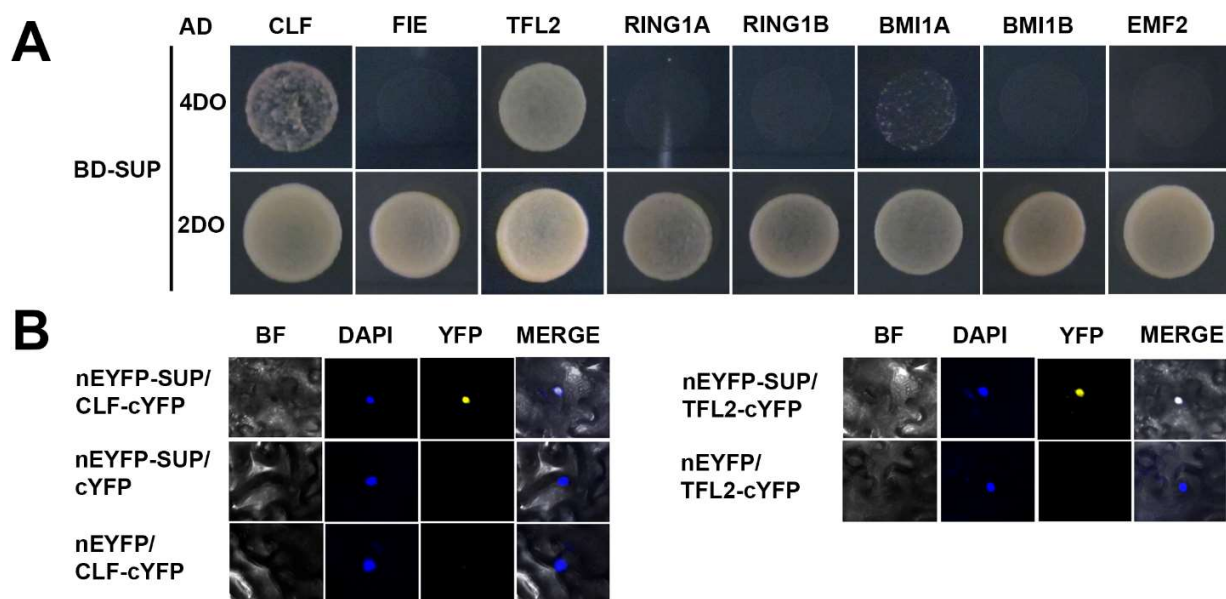
Appendix Figure S9. The *pPIN3::PIN3-GFP* expression pattern is not changed in *sup-5*.

(A) *pPIN3::PIN3-GFP* expression in a stage 4 WT floral bud.

(B) *pPIN3::PIN3-GFP* expression in a stage 4 *sup-5* floral bud.

Scale bars, 20  $\mu\text{m}$ .

### Appendix Figure S10

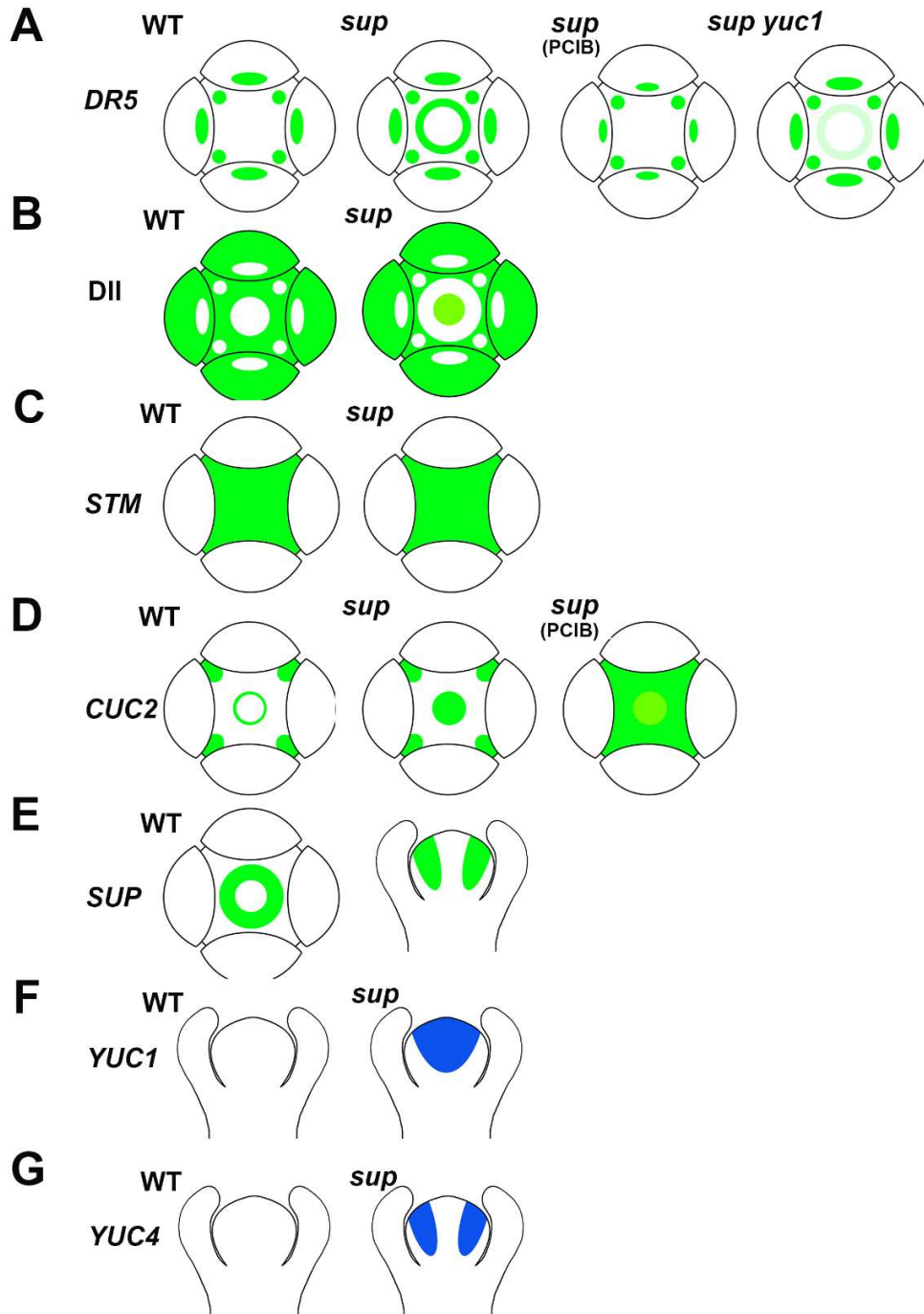


#### Appendix Figure S10. The interaction between SUP with PcG components CLF and TFL2

(A) Yeast two-hybrid assay showing that SUP interacts with CLF (without the C-terminal domain) and TFL2 but not with other chromatin remodelers, including RING1A/B, BMI1A/B, FIE and EMF2.

(B) BiFC analysis of SUP with CLF and TFL2 in tobacco epidermal cells. Yellow signal indicates the binding of SUP with CLF or with TFL2 in the nuclei. DAPI (4',6-diamidino-2-phenylindole) staining indicates nuclei.

Appendix Figure S11



**Appendix Figure S11. Spatial distribution of reporters at stage 4 floral buds in WT and *sup***

**(A)** The *DR5* signal is expressed at the tips of sepals and petal initiation sites in WT, while it is ectopically expressed in whorl 3/4 boundaries in *sup* mutants. The PCIB treatment reduced the ectopic *DR5* signal in *sup*. The *yuc1* mutation also partially rescues the *DR5* signal in *sup yuc1*.

**(B)** The DII-VENUS is depleted at the tips of sepals, petal initiation sites, and the FM regions in WT, while in *sup* mutant, it is ectopically expressed in the FM region, and is depleted in the whorl 3/4 boundary regions.

**(C)** There is no obvious difference of *STM* expression between WT and *sup*, in which *STM* is highly expressed in the boundary region of sepals as well as the whole center region of the floral buds.

**(D)** At WT, *CUC2* is expressed in the boundary regions of sepals, as well as in narrow inner region of whorl 3/4 boundaries. In *sup*, *CUC2* is ectopically expressed in the FM region; PCIB treatment induce the *CUC2* expression in the whole center region of the floral buds, while the signal in the FM region is relatively lower.

**(E)** *SUP* is expressed in the whorl 3/4 boundary regions in WT floral buds at stage 4. Top view and side view to show the ring-like expression domain.

**(F)** *YUC1* is ectopically expressed at the whorl 3/4 boundaries as well the FM region in *sup*.

**(G)** *YUC4* is ectopically expressed at the whorl 3/4 boundary regions.

**Appendix Table S1: List of the down-regulated hormone metabolic process genes after the DEX treatment in the inflorescence of *p35S::SUP-GR***

SEQ_ID	DESCRIPTION	MOCK	DEX	Fold
<b>AT5G36140</b>	CYP716A2	3.18763	1.68883	2.826
<b>AT4G24670</b>	TAR2 (TRYPTOPHAN AMINOTRANSFERASE RELATED 2)	5.3471	4.34155	2.007
<b>AT1G49500</b>	transcription initiation factor TFIID subunit 1b-like protein	4.00798	1.68103	5.017
<b>AT5G42650</b>	AOS (ALLENE OXIDE SYNTHASE)	5.71311	4.51067	2.301
<b>AT5G66040</b>	STR16 (SULFURTRANSFERASE PROTEIN 16)	5.62066	4.44481	2.259
<b>AT5G11320</b>	YUC4 (YUCCA4); monooxygenase/ oxidoreductase	6.28895	5.1269	2.237
<b>AT4G32540</b>	YUC1 (YUCCA 1)	6.80192	5.39371	2.654
<b>AT3G26830</b>	PAD3 (PHYTOALEXIN DEFICIENT 3)	3.18479	2.17741	2.01
<b>AT1G28130</b>	GH3.17; indole-3-acetic acid amido synthetase	6.31214	4.73973	2.974
<b>AT2G20520</b>	FLA6 (FASCICLIN-LIKE ARABINOGALACTAN 6)	3.90284	2.64943	2.384
<b>AT4G14580</b>	CIPK4 (CBL-interacting protein kinase 4)	2.53159	1.46203	2.098
<b>AT3G47210</b>	unknown protein	1.05469	0.01337	2.058
<b>AT2G41510</b>	CKX1 (CYTOKININ OXIDASE/DEHYDROGENASE 1)	6.97201	5.76473	2.309
<b>AT2G36800</b>	DOGT1 (DON-GLUCOSYLTRANSFERASE 1)	7.78674	6.07959	3.265
<b>AT1G05680</b>	UDP-glucuronosyl/UDP-glucosyl transferase family protein	7.45292	5.77195	3.206
<b>AT1G44350</b>	ILL6	8.32588	7.05669	2.41
<b>AT5G56970</b>	CKX3 (CYTOKININ OXIDASE 3)	6.33592	5.19702	2.202

Notes: The list of down-regulated genes belong to "hormone metabolic process" (GO: 0042445). Among these, genes marked in green belong to auxin biosynthesis genes (GO: 0009851) and both genes marked either in green or in black belong to hormone biosynthesis genes (GO: 0042446).



**Appendix Table S2: List of the primers (shown from 5'- to 3'- ends)**

gDSUP-F	caccCATAATGGTTTGTGTTACAGTCACG
gDSUP-R	GTATTCACAAACAACAGAAGCCTTG
mSUP-sfoI	gagcttgacatATGggcgccGAGAGATCAAACAGC
mSUP-sfoI	GCTGTTTGATCTCTCggcgccCATatgtgcaagctc
IAAH-sfoI-F	ggcgccGTGGCCATTACCTCGTTAG
IAAH-sfoI-R	ggcgccTTAATTGGGTAAACCGGCAA
gDCLF-F	tccccgggTCCTAAGGTCCACCACGAAGA
gDCLF-R	ggcgcgccTGGGGCACACCTTATCTCAC
mCLF-sfoI	ggtttcttgacaATGggcgccGCGTCAGAAGCTTCGC
mCLF-sfoI	GCGAAGCTTCTGACGCggcgccCATtgtcaagaaacc
3HA-sfoI-F	ggcgccACTAGTTACCCATACGATGTT
3HA-sfoI-R	ggcgccTCTAGAAGCGTAATCTGGAAC
RT-YUC1-F	CTACTTGGCTTCAGGGAGGTG
RT-YUC1-R	CACCAATTTCCGCCAGCGATC
RT-YUC4-F	CTCTGCCTCATATGGTCGTTAG
RT-YUC4-R	GTCGGTATTGCCAACGTAG
RT-PIN3-F	CGCCGAGAATGGTCTAAAC
RT-PIN3-R	GGTTTCTGATGAGTTTCCTCC
RT-PIN4-F	CAACAACGGAACACATATGCC
RT-PIN4-R	CCACCGGTAAGCAACAAGAG
SALK_106293 yuc1-LP	AAGTTTTGGTTGTCGGATGTG
SALK_106293 yuc1-RP	GTTGCTTTTGTAAACCAGTGGC
SALK_047083 yuc4-LP	ACCATATGAGGCAGAGCATTG
SALK_047083 yuc4-RP	ATGGCAAAGATTTTCCAGTG
LBb1.3	ATTTTGCCGATTTCCGGAAC
gDYUC1-F	CACCggccttttctattccttcgtccca
ProYUC1-R	GAGACTCCATtcttgatgatgatgg
gDYUC1-R	gAGAGGTAAAGACAAAACGAGAACTGC
ProYUC4-R	CTCTACAAGTGCCCATgtcgactaa
gDYUC4-R	cGGATTTATTGAAATGAAGATGAATA
gDYUC4-F	caccGCTTGGAAGGCAATTATCCTAACCG
YUC1-ChIP1	GGGACGGAGGGAATATATTGTATGG
YUC1-ChIP1	GATGATTTTATGAGCCCATAGTAAACTG
YUC1-ChIP2	CAAATCAAATGGGAAGAAGAGCG
YUC1-ChIP2	AAAGAGTGGTGAAAGAGGCATTGG
YUC1-ChIP3	GGACACGAATGTTTATTGAATTATACC
YUC1-ChIP3	CACGGTGATTTAAACAAAACAAAACACTG

YUC1-ChIP4	AATATAGAACAGAATTGGAGTCGGTC
YUC1-ChIP4	GGTTTTCATTTGTGATTTGGGTTTG
YUC1-ChIP5	TTCTGGTCTTGCCACTTCAGCATGT
YUC1-ChIP5	GGCAAAAGTGTTTTGGGAGATGGAG
YUC1-ChIP6	CATCTTGTTGTCCGGAACACCGTAA
YUC1-ChIP6	ATCTCCCTTGGCAACACATGAACCT
YUC1-ChIP7	ATTGATGGCCAATCTTTCGTTTGGGA
YUC1-ChIP7	TGCCGGATCTGATGAGAGACATAGC
YUC1-ChIP8	AAGCAACGTGCCTACTTGGCTTCAG
YUC1-ChIP8	GGCCGTTGATGTTAATTTGTTTTTGA
YUC1-ChIP9	ACGAGAAGAGGACTCCTTGGAACGG
YUC1-ChIP9	AACTGCACATATTCCTGGTGGACCC
YUC1-ChIP10	TGCAGACGTAAGGAAGAGGGAGGAA
YUC1-ChIP10	GGTAGAAAGAGATCGTCCATTGCGG
YUC4-ChIP1	GCTTGGAAGGCAATTATCCTAACCG
YUC4-ChIP1	CATGTAAGAATCAACGGCTTCTGCG
YUC4-ChIP2	GACATGAGAGGAGTCGAGTTGCTGA
YUC4-ChIP2	TCTTGCAAGGCCATGTAAATGTGA
YUC4-ChIP3	CCTCGTCTAACCAAAGGGACCATCA
YUC4-ChIP3	GAGCCTAGACTCATGACTAAGCTGGAAGA
YUC4-ChIP4	TTTTTCTTCCAGCTTAGTCATGAGTCTAGG
YUC4-ChIP4	TGCATGCTTGGTATAATAGAATGGTCC
YUC4-ChIP5	TTCGATTAAATAATACCCAGAAAGCAAG
YUC4-ChIP5	GCATTGCATGCTAAACCTCATCTC
YUC4-ChIP6	TAAATGTGATGTTGTTGCGTCCAG
YUC4-ChIP6	GACCTCCACTTCCCCTATGATCTC
YUC4-ChIP7	TACTTGACCCCAACAACTTTCGG
YUC4-ChIP7	AACACTAAAACGAACATCCGCTAAC
YUC4-ChIP8	CTTAGGTGCATGTGTGTGTGATCG
YUC4-ChIP8	TGCCCATGTGCGACTAATAAAAGCG
YUC4-ChIP9	AACTTCCCCAAATACCCATCCAAGC
YUC4-ChIP9	CCATAGACCAGATGCGTCATCGAAC
YUC4-ChIP10	GTTGGGCAATACCGACCTTTTAGGC
YUC4-ChIP10	GATCGGATTAAAGAAATGGCACCGA
YUC4-ChIP11	TCAAGAATAACGGTGATGCTGATGG
YUC4-ChIP11	TGTTCCCTTTGTTGCATGTGTTGTG
YUC4-ChIP12	CGTTTCCTAACGGATGGAAAGGAGA
YUC4-ChIP12	TATCCTCAGCGATCTTAACGGCGTC
SUP-BD-F-NdeI	CTGCATATGATGGAGAGATCAAACAGCATAGAG
SUP-BD-R-EcoRI	AGTGAATTCTTAAGCGAAACCCAAACGGAGTTC
SUP-BD1-102-R-EcoR I	CCGAATTCATGAGGAGGAGGAGAGTTTGC
SUP-BD89-205-F-EcoR1	CCGAATTCCTTCTCCTCCTTACCCTAACCCCT

SUP-BD176-205-F-NdeI	CTGCATATGGAAATCATCAGCTTGGAGCT
SUP-nEYFP-F-Bgl II	CTCAGATCTATGGAGAGATCAAACAGCATAGAG
SUP-nEYFP-R-XmaI	CACCCGGGTAAAGCGAAACCCAAACGGAGTTC
SUP-mEAR1-F	GAATCAGAGCAAGATgcGGATgcAGAAgcCCGTgcGGGTTTC
SUP-mEAR1-R	TTAAGCGAAACCCgcACGGgcTTCTgcATCCgcATCTTGCTC
SUP-mEAR2-F	GAATCAGAGCAAGATgcGGATgcAGAAgcCCGTTTGG
SUP-mEAR2-R	AGCGAAACCCAAACGGgcTTCTgcATCCgcATCTTGC
FIE-AD-F-NdeI	GTCATATGATGTCGAAGATAACCTTAGGGA
FIE-AD-R-XmaI	CACCCGGGCTACTTGGTAATCACGTCCCA

**Appendix Table S3** List of genes showing a 2.0-fold change in expression after DEX treatment in the inflorescence of *p35S::SUP-GR*

SEQ_ID	MOCK	DEX	Fold change
AT1G01020	2.89278	1.88874	2.005 down
AT1G01420	2.24565	1.08227	2.239 down
AT1G01600	9.35142	7.77069	2.991 down
AT1G01900	7.24165	6.0142	2.341 down
AT1G02630	6.89293	5.5364	2.560 down
AT1G02850	9.88727	8.06493	3.536 down
AT1G03580	2.09131	0.99119	2.143 down
AT1G05100	5.86797	4.07888	3.455 down
AT1G05420	8.35119	5.78067	5.940 down
AT1G05577	3.52498	2.16289	2.570 down
AT1G05680	7.45292	5.77195	3.206 down
AT1G07500	4.09261	2.13528	3.883 down
AT1G07985	2.34221	0.86289	2.788 down
AT1G08630	2.82209	1.677	2.211 down
AT1G08920	1.12568	0.38023	2.840 down
AT1G08990	3.06194	1.90921	2.223 down
AT1G10540	8.94795	6.99561	3.870 down
AT1G10745	1.82136	0.37276	2.729 down
AT1G11440	6.47214	4.94703	2.878 down
AT1G11925	2.06742	0.86993	2.293 down
AT1G13290	6.76007	5.18378	2.982 down
AT1G13650	5.74918	4.58968	2.233 down
AT1G13670	2.33858	0.83699	2.831 down
AT1G14280	6.29481	5.24047	2.076 down
AT1G14760	5.148	3.08474	4.179 down
AT1G17310	2.73507	1.52246	2.317 down
AT1G17830	5.2505	3.74921	2.830 down
AT1G18191	2.17745	1.04261	2.195 down
AT1G18710	2.64532	1.28601	2.565 down
AT1G18740	7.09774	6.04093	2.080 down
AT1G18750	4.19672	2.74182	2.741 down
AT1G18810	5.0281	3.99907	2.040 down
AT1G18980	2.26664	0.97328	2.450 down
AT1G19640	8.25596	6.95866	2.457 down
AT1G19890	3.80929	2.19813	3.054 down
AT1G20240	2.34877	1.26602	2.118 down
AT1G20680	5.7583	4.61807	2.204 down
AT1G21120	4.07872	2.70248	2.595 down
AT1G21130	4.85744	3.7262	2.190 down

AT1G21270	6.3741	4.70047	3.190	down
AT1G21540	9.36624	6.35393	8.068	down
AT1G22380	4.78404	3.59384	2.281	down
AT1G22420	3.19798	2.12751	2.100	down
AT1G22590	1.08323	0.25381	2.526	down
AT1G22885	3.51206	2.16739	2.539	down
AT1G22910	6.00054	4.93233	2.096	down
AT1G23420	4.3418	2.33156	4.028	down
AT1G24110	3.0069	1.63873	2.581	down
AT1G25275	8.34527	7.04442	2.463	down
AT1G25310	1.70761	0.60416	2.148	down
AT1G26770	6.83936	5.61583	2.335	down
AT1G26795	1.76894	0.65298	2.167	down
AT1G26945	6.18092	4.58627	3.020	down
AT1G27020	4.8035	3.77977	2.033	down
AT1G28130	6.31214	4.73973	2.974	down
AT1G28290	3.13925	1.8452	2.452	down
AT1G28306	1.90003	0.87299	2.037	down
AT1G29395	8.9304	6.2411	6.450	down
AT1G29510	2.61718	1.4032	2.319	down
AT1G29720	2.39238	1.28378	2.156	down
AT1G30100	4.24526	1.46905	6.850	down
AT1G30780	6.28893	5.0517	2.357	down
AT1G31270	1.44723	0.06715	2.602	down
AT1G31520	1.68697	0.44959	2.357	down
AT1G32350	2.65562	1.36049	2.453	down
AT1G32690	5.10794	3.75138	2.560	down
AT1G33160	1.99811	0.77015	2.342	down
AT1G33240	9.23293	7.75071	2.793	down
AT1G33590	9.09804	8.08163	2.022	down
AT1G33700	8.20214	7.16387	2.053	down
AT1G33750	2.62623	0.62818	3.994	down
AT1G33790	5.8773	4.39283	2.798	down
AT1G33900	1.88855	0.6379	2.379	down
AT1G35360	2.34407	1.11752	2.340	down
AT1G35560	5.90628	4.78709	2.172	down
AT1G37140	1.80524	0.555	2.378	down
AT1G40091	2.12409	0.63586	2.805	down
AT1G41850	2.78489	1.7534	2.044	down
AT1G43763	3.60437	2.28983	2.487	down
AT1G44045	3.33071	1.40715	3.793	down
AT1G44350	8.32588	7.05669	2.410	down
AT1G46480	5.55724	3.95507	3.035	down

AT1G47625	0.97778	0.12968	2.154	down
AT1G47730	3.94011	2.8742	2.093	down
AT1G47780	1.58847	0.55568	2.045	down
AT1G49440	1.91359	0.33389	2.989	down
AT1G49500	4.00798	1.68103	5.017	down
AT1G50580	3.86474	2.81565	2.069	down
AT1G50680	4.43723	3.40287	2.048	down
AT1G51000	1.36499	0.28311	2.116	down
AT1G51090	5.60541	4.50771	2.140	down
AT1G52470	1.383	0.23714	2.212	down
AT1G52565	3.7271	2.02109	3.262	down
AT1G52690	5.68139	4.22157	2.750	down
AT1G53160	7.06491	5.6351	2.694	down
AT1G53282	1.49647	0.04495	2.910	down
AT1G54575	6.2262	5.18433	2.058	down
AT1G55600	2.3185	1.27278	2.064	down
AT1G55700	2.37701	0.95932	2.671	down
AT1G56100	1.30803	-0.1036	2.660	down
AT1G56630	2.32634	0.28409	4.118	down
AT1G57750	8.75939	6.21512	5.833	down
AT1G57990	5.10296	3.88566	2.325	down
AT1G58007	1.4378	0.09255	2.888	down
AT1G59530	2.16142	1.15102	2.014	down
AT1G59730	2.21542	1.15158	2.090	down
AT1G60060	8.09327	4.96254	8.758	down
AT1G60630	5.95168	4.61557	2.524	down
AT1G61760	4.0897	2.86322	2.339	down
AT1G62320	2.79493	1.45633	2.529	down
AT1G62710	5.59394	4.51998	2.105	down
AT1G62770	4.89805	2.90916	3.969	down
AT1G62975	2.46611	1.15	2.489	down
AT1G63040	1.69308	0.09901	3.018	down
AT1G63600	1.58555	0.48773	2.140	down
AT1G64700	4.6106	3.58361	2.037	down
AT1G65120	4.3532	3.28537	2.096	down
AT1G65352	1.19188	0.06664	2.392	down
AT1G65385	4.89173	3.87269	2.026	down
AT1G65480	3.53955	1.9918	2.923	down
AT1G66230	2.43751	0.79359	3.125	down
AT1G66280	2.01097	0.45248	2.945	down
AT1G66290	0.58204	0.42485	2.009	down
AT1G66390	2.24687	0.7954	2.734	down
AT1G66725	4.51187	2.43629	4.215	down

AT1G66760	6.4519	5.16854	2.434	down
AT1G66830	1.29382	0.18197	2.161	down
AT1G66930	4.98857	2.63323	5.117	down
AT1G66940	5.94363	3.93895	4.013	down
AT1G67590	8.14051	6.99132	2.217	down
AT1G68180	2.59644	1.52786	2.097	down
AT1G68320	4.12543	2.2857	3.579	down
AT1G68350	2.81853	1.76601	2.074	down
AT1G68568	8.81151	6.99724	3.516	down
AT1G68570	9.68565	7.81925	3.646	down
AT1G69540	3.61984	2.57373	2.064	down
AT1G69797	1.27894	0.11098	2.246	down
AT1G70080	2.65334	1.3403	2.484	down
AT1G70720	4.78402	2.55583	4.685	down
AT1G70920	4.39412	3.3449	2.069	down
AT1G70940	7.50376	6.20828	2.454	down
AT1G71120	2.74926	1.68575	2.090	down
AT1G72110	2.03857	0.75146	2.440	down
AT1G72200	2.42762	0.75962	3.177	down
AT1G72920	4.12524	2.78073	2.539	down
AT1G74045	2.07307	0.67876	2.628	down
AT1G74110	3.11368	1.78064	2.519	down
AT1G74670	8.90738	5.95356	7.747	down
AT1G75610	2.32814	1.09437	2.351	down
AT1G75770	5.11459	3.89624	2.326	down
AT1G75880	8.60359	6.66455	3.834	down
AT1G75890	5.20291	4.19734	2.007	down
AT1G76480	1.38468	0.06913	2.488	down
AT1G76930	4.19231	3.01475	2.261	down
AT1G77200	7.31386	5.78383	2.887	down
AT1G77450	7.32095	6.2692	2.073	down
AT1G77855	6.04106	3.95872	4.234	down
AT1G77870	5.31621	3.92538	2.622	down
AT1G77880	4.75234	3.49254	2.394	down
AT1G78450	4.82117	2.58007	4.727	down
AT1G78970	7.22552	5.45807	3.404	down
AT1G79430	1.38954	0.2928	2.138	down
AT1G80050	8.36823	6.49171	3.671	down
AT1G80540	7.43938	6.39052	2.068	down
AT1G80580	2.00775	0.6018	2.649	down
AT1G80730	3.46934	2.07825	2.622	down
AT2G01200	4.9259	3.17918	3.355	down
AT2G01420	7.711	4.18754	11.499	down

AT2G02060	4.75499	3.73896	2.022 down
AT2G03310	4.5276	3.4432	2.120 down
AT2G03750	8.10099	6.99325	2.155 down
AT2G03830	4.65333	2.82642	3.547 down
AT2G03937	1.53638	0.05329	3.009 down
AT2G04038	2.14545	1.04159	2.149 down
AT2G04590	1.86814	0.12735	3.987 down
AT2G05115	1.72453	0.48674	2.358 down
AT2G05240	2.09956	0.17829	3.787 down
AT2G05360	1.86835	0.40362	2.760 down
AT2G05540	5.66696	4.32889	2.528 down
AT2G06020	0.96865	0.31388	2.432 down
AT2G06095	2.50025	1.4654	2.048 down
AT2G06170	1.84162	0.67116	2.250 down
AT2G06200	5.66204	3.35195	4.959 down
AT2G06875	1.74624	0.43869	2.475 down
AT2G07042	1.54867	0.35863	2.281 down
AT2G07190	1.27354	0.24571	2.038 down
AT2G10090	2.94269	1.31921	3.081 down
AT2G10833	1.81061	0.38889	2.679 down
AT2G11240	0.69679	0.31893	2.021 down
AT2G11410	2.63258	1.56879	2.090 down
AT2G12407	2.03817	0.68974	2.546 down
AT2G14430	2.94749	1.57368	2.591 down
AT2G15020	3.60354	2.43334	2.250 down
AT2G15170	0.86948	0.22625	2.137 down
AT2G16260	2.30855	0.87364	2.703 down
AT2G16367	6.06246	4.22103	3.583 down
AT2G16960	3.39624	1.53202	3.640 down
AT2G17310	3.03901	1.83479	2.304 down
AT2G17950	7.16749	5.87268	2.453 down
AT2G18380	6.68493	5.30554	2.601 down
AT2G18720	4.13247	3.09749	2.049 down
AT2G18730	9.93993	8.85442	2.122 down
AT2G19190	1.72425	0.65995	2.091 down
AT2G20460	2.30803	1.02213	2.438 down
AT2G20520	3.90284	2.64943	2.384 down
AT2G21550	4.19935	3.00429	2.289 down
AT2G22145	2.09955	0.96497	2.195 down
AT2G22155	1.15759	0.01491	2.254 down
AT2G22190	7.12145	5.90408	2.325 down
AT2G23000	5.34484	1.83997	11.351 down
AT2G23060	8.39985	7.20183	2.294 down



AT2G23110	1.51671	0.4708	2.064	down
AT2G23590	5.27898	3.92655	2.553	down
AT2G23600	5.82373	4.60678	2.324	down
AT2G25220	5.13124	3.96843	2.238	down
AT2G25409	0.83196	0.42045	2.382	down
AT2G25440	1.95827	0.84921	2.157	down
AT2G25630	2.57588	0.88874	3.220	down
AT2G26530	2.27227	0.72927	2.914	down
AT2G27220	4.04108	1.70245	5.058	down
AT2G27500	5.40347	4.3748	2.040	down
AT2G27550	1.3727	0.35253	2.028	down
AT2G28085	3.3723	1.33999	4.090	down
AT2G28315	6.15565	5.07753	2.111	down
AT2G28460	2.6147	1.21743	2.634	down
AT2G29120	2.58502	1.01672	2.965	down
AT2G29340	5.47731	3.39812	4.225	down
AT2G29452	2.23258	0.00466	4.714	down
AT2G30362	6.14777	4.91706	2.346	down
AT2G30370	6.63942	5.42154	2.326	down
AT2G30430	2.24977	1.21156	2.053	down
AT2G30540	5.41577	3.22701	4.559	down
AT2G31160	6.52287	5.35468	2.247	down
AT2G32100	7.99208	6.41981	2.973	down
AT2G32410	1.98725	0.35966	3.089	down
AT2G32430	6.69302	5.57065	2.177	down
AT2G33385	3.12534	1.84771	2.424	down
AT2G33690	1.93242	0.58966	2.536	down
AT2G34360	2.86123	1.69614	2.242	down
AT2G34960	6.6404	5.34091	2.461	down
AT2G35080	2.87692	1.81106	2.093	down
AT2G36090	4.04018	2.50135	2.905	down
AT2G36100	2.55837	1.01275	2.919	down
AT2G36210	3.5152	1.95489	2.949	down
AT2G36750	5.42587	3.07415	5.104	down
AT2G36800	7.78674	6.07959	3.265	down
AT2G37030	2.46947	1.46807	2.001	down
AT2G37580	4.18982	2.72039	2.769	down
AT2G38170	9.2686	7.62703	3.120	down
AT2G38170	6.79925	4.75492	4.124	down
AT2G39330	8.98518	6.36819	6.134	down
AT2G39410	1.59121	0.43314	2.231	down
AT2G39920	4.61398	2.26641	5.089	down
AT2G39980	8.25575	7.12511	2.189	down

AT2G40200	2.26904	1.05088	2.326 down
AT2G40970	4.97744	3.96501	2.017 down
AT2G41510	6.97201	5.76473	2.309 down
AT2G42320	8.42989	7.35341	2.108 down
AT2G42485	2.77156	1.62318	2.216 down
AT2G43255	1.31509	0.11627	2.697 down
AT2G45180	7.9863	6.81298	2.255 down
AT2G45410	3.56064	1.12418	5.413 down
AT2G45570	1.88035	0.79495	2.121 down
AT2G46130	1.93143	0.52434	2.652 down
AT2G46640	1.69682	0.33792	2.564 down
AT2G47750	7.38891	6.38148	2.010 down
AT2G47870	2.23744	0.64913	3.006 down
AT2G48090	3.33015	2.2252	2.150 down
AT3G01750	7.36444	6.13048	2.352 down
AT3G01960	3.07351	1.4544	3.071 down
AT3G02500	3.64423	2.39341	2.379 down
AT3G02885	1.27353	-0.1379	2.660 down
AT3G03240	1.08955	0.05755	2.044 down
AT3G04000	2.95586	1.56388	2.624 down
AT3G04200	0.95629	0.06033	2.023 down
AT3G04545	2.04497	1.00554	2.055 down
AT3G05160	6.88995	5.3891	2.830 down
AT3G05975	1.50182	0.20064	2.464 down
AT3G06370	4.5374	3.44193	2.136 down
AT3G07340	5.42049	3.04538	5.187 down
AT3G07620	2.64007	0.73668	3.740 down
AT3G10900	1.89356	0.8858	2.010 down
AT3G11580	6.89589	5.87235	2.032 down
AT3G11720	6.48151	5.11485	2.578 down
AT3G11860	2.69274	1.59656	2.137 down
AT3G11930	7.3841	5.89717	2.802 down
AT3G12720	2.12477	0.88006	2.369 down
AT3G12750	8.46766	7.27126	2.291 down
AT3G13600	7.34381	6.24438	2.142 down
AT3G13662	7.11023	5.8985	2.316 down
AT3G14025	3.27137	1.82153	2.731 down
AT3G14300	2.74664	1.61214	2.195 down
AT3G14500	2.83554	1.57291	2.399 down
AT3G15310	4.6023	2.36305	4.721 down
AT3G15870	5.56976	4.31427	2.387 down
AT3G16895	1.18242	0.05482	2.184 down
AT3G17130	2.94421	1.62924	2.487 down

AT3G17609	6.18194	4.85875	2.502 down
AT3G18217	1.79061	0.68909	2.145 down
AT3G18550	3.45064	1.96335	2.803 down
AT3G21680	2.40211	0.95757	2.721 down
AT3G22800	8.52445	7.08613	2.710 down
AT3G23220	2.13472	0.72772	2.651 down
AT3G23320	0.88834	0.14663	2.049 down
AT3G23633	1.54392	0.43965	2.149 down
AT3G23637	1.32712	0.27109	2.079 down
AT3G24093	2.35987	0.51142	3.601 down
AT3G24517	1.37142	0.26962	2.146 down
AT3G24518	6.36931	4.35164	4.049 down
AT3G25630	1.60602	0.43363	2.253 down
AT3G25790	1.70836	0.1315	2.983 down
AT3G26120	3.75332	0.72737	8.145 down
AT3G26590	7.92728	5.37683	5.858 down
AT3G26760	7.32501	5.75121	2.976 down
AT3G26830	3.18479	2.17741	2.010 down
AT3G26960	5.06645	2.75324	4.969 down
AT3G27650	2.99767	1.36174	3.107 down
AT3G27660	5.77528	3.87703	3.727 down
AT3G28270	3.33325	0.93309	5.278 down
AT3G28412	2.90988	1.86703	2.060 down
AT3G28674	2.0237	0.48372	2.907 down
AT3G28705	3.29289	2.07052	2.333 down
AT3G28740	5.73559	3.33948	5.263 down
AT3G28855	1.74327	-0.0866	3.555 down
AT3G28857	2.40898	0.75677	3.143 down
AT3G29030	7.70992	4.26436	10.894 down
AT3G29150	2.53173	0.8505	3.207 down
AT3G29790	1.58734	0.43368	2.224 down
AT3G30844	1.18536	0.13904	2.065 down
AT3G31720	0.64658	0.48709	2.194 down
AT3G43430	3.70811	1.85517	3.612 down
AT3G43546	1.15163	0.04208	2.287 down
AT3G43622	2.55257	1.13113	2.678 down
AT3G43867	2.22694	0.65581	2.971 down
AT3G44230	3.22564	1.16495	4.171 down
AT3G44605	0.99012	0.05945	2.069 down
AT3G44935	1.39322	0.31757	2.107 down
AT3G45200	1.28876	0.00404	2.450 down
AT3G45710	4.10927	2.32896	3.435 down
AT3G46130	3.26752	1.55347	3.280 down

AT3G46240	1.70616	0.11032	3.022	down
AT3G46490	2.71267	0.66268	4.141	down
AT3G46666	1.09387	0.08674	2.266	down
AT3G46850	2.65146	1.62339	2.039	down
AT3G47170	1.70572	0.67197	2.047	down
AT3G47210	1.05469	0.01337	2.058	down
AT3G47230	1.28384	0.16889	2.165	down
AT3G47770	1.74731	0.51333	2.352	down
AT3G48550	6.79389	4.91708	3.672	down
AT3G49210	3.28245	1.26159	4.058	down
AT3G50755	2.1923	0.47609	3.285	down
AT3G50800	5.58841	4.10843	2.789	down
AT3G50840	3.83305	2.67271	2.235	down
AT3G51860	8.01604	6.37759	3.113	down
AT3G51910	2.48346	1.26831	2.321	down
AT3G52480	5.65125	3.33365	4.985	down
AT3G52620	2.34491	0.45888	3.696	down
AT3G53232	2.01625	0.98664	2.041	down
AT3G53480	6.95946	5.5808	2.600	down
AT3G53980	6.6033	5.14818	2.741	down
AT3G55970	4.71698	3.41086	2.472	down
AT3G56200	4.05857	2.90484	2.224	down
AT3G56700	1.06651	0.04449	2.159	down
AT3G57130	6.20163	4.55388	3.133	down
AT3G57230	4.42837	3.32349	2.150	down
AT3G58450	1.54868	0.39468	2.225	down
AT3G58550	3.08598	1.6975	2.618	down
AT3G59240	2.94811	1.26426	3.212	down
AT3G60420	7.40739	6.20505	2.301	down
AT3G60870	4.59641	3.27611	2.497	down
AT3G61198	4.63115	2.14372	5.607	down
AT3G61750	7.789	6.47691	2.483	down
AT3G61940	3.09365	1.66401	2.693	down
AT3G62610	5.14993	4.06019	2.128	down
AT3G62690	7.17995	6.01061	2.249	down
AT3G62740	4.70884	2.70885	3.999	down
AT4G00050	2.87854	0.57857	4.924	down
AT4G00165	8.05435	7.03434	2.027	down
AT4G00210	4.56147	3.29654	2.403	down
AT4G01140	2.86405	0.76602	4.281	down
AT4G01340	1.38265	0.29778	2.121	down
AT4G01460	7.63474	6.31969	2.488	down
AT4G01500	8.07674	6.76187	2.487	down

AT4G01580	7.28234	6.26722	2.021 down
AT4G01915	3.10165	1.85884	2.366 down
AT4G02670	5.79631	3.97251	3.540 down
AT4G03270	6.94559	5.91835	2.038 down
AT4G03437	3.107	1.9471	2.234 down
AT4G03695	1.33397	0.30039	2.047 down
AT4G03913	1.78798	-0.1809	3.914 down
AT4G03923	3.93022	2.2069	3.301 down
AT4G04404	3.22361	2.20514	2.025 down
AT4G04409	1.53713	0.2647	2.415 down
AT4G04750	7.38414	6.15725	2.340 down
AT4G06510	3.16264	1.97347	2.280 down
AT4G06644	2.0783	1.00455	2.104 down
AT4G06699	3.71353	2.25726	2.743 down
AT4G07310	2.61932	1.41524	2.303 down
AT4G07480	1.83023	0.42316	2.651 down
AT4G08028	1.29604	0.043	2.383 down
AT4G08076	1.66177	0.45651	2.305 down
AT4G08136	2.88665	1.8287	2.081 down
AT4G08264	1.37255	0.09066	2.757 down
AT4G08336	2.06555	0.91447	2.220 down
AT4G08351	2.20546	0.30904	3.722 down
AT4G08485	0.72971	-0.3818	2.160 down
AT4G08645	1.31756	0.15002	2.246 down
AT4G09200	1.37098	0.12911	2.828 down
AT4G09940	3.99138	2.43077	2.949 down
AT4G10120	6.29845	4.9626	2.524 down
AT4G10201	0.77891	0.36463	2.209 down
AT4G10240	2.37238	0.65701	3.283 down
AT4G10430	2.60774	1.52143	2.123 down
AT4G10500	2.67686	1.29606	2.604 down
AT4G11460	4.00716	2.62513	2.606 down
AT4G11610	2.21675	1.19254	2.033 down
AT4G11945	1.37109	0.18959	2.268 down
AT4G12580	4.19256	2.53855	3.147 down
AT4G13210	4.16872	3.01642	2.222 down
AT4G13410	6.29816	4.06189	4.711 down
AT4G13760	1.47398	0.09719	2.596 down
AT4G14130	8.13412	6.4583	3.195 down
AT4G14251	2.89666	0.41944	5.568 down
AT4G14580	2.53159	1.46203	2.098 down
AT4G14980	2.94653	1.83005	2.168 down
AT4G15060	2.48541	1.25274	2.350 down

AT4G15075	1.65738	0.32163	2.524 down
AT4G15160	8.95475	7.6064	2.546 down
AT4G15733	1.0717	0.01249	2.120 down
AT4G15760	7.61003	6.43908	2.251 down
AT4G17250	2.87642	1.66611	2.313 down
AT4G17810	5.46649	3.07636	5.242 down
AT4G18000	0.86147	0.23055	2.131 down
AT4G18197	4.57844	3.52342	2.077 down
AT4G18410	1.41645	0.14452	2.414 down
AT4G18540	3.30126	1.39836	3.739 down
AT4G18620	1.58416	0.39993	2.272 down
AT4G19170	6.45564	5.12955	2.507 down
AT4G19380	7.35102	3.63985	13.097 down
AT4G19430	7.4073	4.69691	6.544 down
AT4G19770	2.35874	0.55412	3.493 down
AT4G21500	3.87832	2.8594	2.026 down
AT4G21930	6.96428	5.91652	2.067 down
AT4G24275	0.81777	0.34196	2.234 down
AT4G24670	5.3471	4.34155	2.007 down
AT4G25434	2.51484	1.3485	2.244 down
AT4G25760	6.37281	4.07546	4.915 down
AT4G26055	3.99759	1.71171	4.876 down
AT4G26420	0.97548	0.20804	2.271 down
AT4G27260	9.7946	8.78555	2.012 down
AT4G27330	8.35357	7.06905	2.436 down
AT4G27590	1.41303	0.36698	2.064 down
AT4G27657	3.64734	1.77451	3.662 down
AT4G28460	5.25684	3.96794	2.443 down
AT4G28850	1.62071	0.08508	3.262 down
AT4G29033	0.80255	0.63118	2.701 down
AT4G29210	3.49788	2.34345	2.225 down
AT4G29340	5.99293	4.89214	2.144 down
AT4G31620	5.37989	2.85897	5.739 down
AT4G31630	2.58379	1.37052	2.318 down
AT4G31730	4.71488	3.40942	2.471 down
AT4G32540	6.80192	5.39371	2.654 down
AT4G32924	1.99396	0.7758	2.326 down
AT4G32950	6.09141	4.97002	2.175 down
AT4G33550	2.5228	0.88429	3.113 down
AT4G33585	3.67773	2.61154	2.093 down
AT4G33960	3.98201	2.7189	2.400 down
AT4G34930	1.1121	0.05673	2.248 down
AT4G34940	5.70313	4.40185	2.464 down

AT4G35295	2.62584	1.05292	2.975 down
AT4G36510	1.74994	0.66905	2.115 down
AT4G37140	4.56946	1.6748	7.436 down
AT4G37310	5.96998	4.27038	3.248 down
AT4G37320	5.63843	3.5668	4.203 down
AT4G37520	3.4094	0.77943	6.190 down
AT4G37530	6.83179	4.3668	5.521 down
AT4G37610	5.58167	4.53951	2.059 down
AT4G37840	1.3455	0.08586	2.394 down
AT4G37970	2.16092	0.31401	3.597 down
AT4G38340	5.12134	3.97875	2.207 down
AT4G38860	6.09513	4.19234	3.739 down
AT4G39320	2.13483	1.05525	2.113 down
AT4G39640	6.64855	4.96527	3.211 down
AT5G01840	6.74179	5.57626	2.243 down
AT5G02190	8.78428	7.48456	2.461 down
AT5G02750	6.2967	5.24145	2.078 down
AT5G02780	2.22614	0.59723	3.092 down
AT5G03510	4.14451	2.98651	2.231 down
AT5G03700	4.62701	1.81362	7.029 down
AT5G03790	6.07813	4.17317	3.745 down
AT5G04030	0.97627	0.12287	2.142 down
AT5G04490	7.40392	6.12436	2.427 down
AT5G06278	3.05923	1.74909	2.479 down
AT5G06800	2.90839	1.25068	3.155 down
AT5G06865	6.74903	5.19622	2.933 down
AT5G06870	8.1799	6.28524	3.718 down
AT5G07500	4.13537	3.00105	2.195 down
AT5G07580	6.51328	5.21271	2.463 down
AT5G07990	10.52827	9.46204	2.093 down
AT5G08460	5.4542	4.31597	2.201 down
AT5G08760	2.67824	1.54686	2.190 down
AT5G09700	1.21813	0.29294	2.850 down
AT5G09820	4.17575	3.14741	2.039 down
AT5G10100	4.89961	3.4096	2.808 down
AT5G10140	0.7622	0.39824	2.235 down
AT5G10250	3.74923	2.06849	3.205 down
AT5G10300	6.68213	4.62168	4.171 down
AT5G10310	7.64903	6.31896	2.514 down
AT5G11320	6.28895	5.1269	2.237 down
AT5G11425	2.08927	0.77226	2.491 down
AT5G11830	2.08699	0.74492	2.535 down
AT5G12060	1.56772	0.00642	2.977 down

AT5G12450	1.53755	0.50235	2.049 down
AT5G12460	2.98499	1.79461	2.282 down
AT5G13370	2.81705	1.17714	3.116 down
AT5G14545	1.63305	0.00192	3.097 down
AT5G14565	8.89892	7.64096	2.391 down
AT5G14570	8.26413	7.0218	2.365 down
AT5G15160	4.71766	1.87267	7.185 down
AT5G15265	1.2231	0.11369	2.525 down
AT5G15840	6.24689	5.23069	2.022 down
AT5G16080	5.21884	3.48206	3.332 down
AT5G16140	0.82992	0.20987	2.055 down
AT5G16190	7.31215	5.61896	3.233 down
AT5G16235	6.64862	5.21593	2.699 down
AT5G17180	2.39876	0.62795	3.412 down
AT5G17590	6.02787	4.83075	2.292 down
AT5G17720	1.22021	0.16467	2.078 down
AT5G19110	3.20357	1.81177	2.624 down
AT5G20260	2.12405	0.47447	3.137 down
AT5G20670	7.31001	5.99104	2.494 down
AT5G20800	0.75786	0.52311	2.430 down
AT5G20940	8.16894	6.47634	3.232 down
AT5G22300	4.73572	2.94029	3.471 down
AT5G22460	1.46976	0.0811	2.618 down
AT5G22545	1.26837	0.11381	2.606 down
AT5G22900	3.12874	1.08806	4.114 down
AT5G23100	7.74544	6.71419	2.043 down
AT5G24190	2.43093	1.1853	2.371 down
AT5G24370	3.41706	1.59067	3.546 down
AT5G25390	6.97457	5.50243	2.774 down
AT5G25810	4.48715	2.95751	2.887 down
AT5G26010	0.7259	0.59292	2.494 down
AT5G27130	1.76261	0.09292	3.181 down
AT5G28143	1.10438	0.07244	2.260 down
AT5G28886	1.90532	0.41021	2.818 down
AT5G28920	1.82482	0.18537	3.115 down
AT5G29000	1.70471	0.50482	2.297 down
AT5G29436	2.7143	1.42643	2.441 down
AT5G30500	3.65087	2.15479	2.820 down
AT5G31412	1.2942	0.05373	2.545 down
AT5G32436	3.33497	0.77853	5.882 down
AT5G32520	3.94528	2.73029	2.321 down
AT5G33303	3.91984	2.36798	2.931 down
AT5G33350	2.94386	1.58249	2.569 down



AT5G34825	3.72834	1.88403	3.590 down
AT5G35230	1.46376	0.3935	2.099 down
AT5G35480	2.58936	0.67813	3.761 down
AT5G35601	2.9777	1.38372	3.018 down
AT5G35777	1.27723	0.25565	2.893 down
AT5G36140	3.18763	1.68883	2.826 down
AT5G36960	4.13075	2.26455	3.645 down
AT5G37620	1.84219	0.0956	3.355 down
AT5G37800	2.43096	1.06044	2.585 down
AT5G37860	7.26495	5.57693	3.222 down
AT5G38270	1.3582	0.11521	2.366 down
AT5G38435	2.09141	0.55134	2.908 down
AT5G38940	2.13285	0.31742	3.519 down
AT5G38960	2.35696	0.93933	2.671 down
AT5G39190	3.15809	1.97758	2.266 down
AT5G39245	1.38888	-0.2001	3.008 down
AT5G39860	4.69884	3.66041	2.053 down
AT5G40210	4.09493	2.30507	3.457 down
AT5G40540	6.82345	5.75238	2.100 down
AT5G40800	3.79527	2.76081	2.048 down
AT5G40990	1.5376	0.53585	4.208 down
AT5G41050	6.44404	4.20377	4.724 down
AT5G41510	5.51748	3.61919	3.727 down
AT5G42650	5.71311	4.51067	2.301 down
AT5G42860	7.03312	5.90787	2.181 down
AT5G43513	3.55514	1.85974	3.238 down
AT5G44210	4.87695	3.3124	2.957 down
AT5G44390	2.82089	1.36903	2.735 down
AT5G44430	1.54166	0.21366	2.510 down
AT5G45220	2.3464	0.31457	4.089 down
AT5G45350	4.75344	3.58798	2.243 down
AT5G45490	3.96015	2.10574	3.616 down
AT5G46500	2.35939	0.89335	2.762 down
AT5G46810	0.90847	0.28385	2.285 down
AT5G46830	4.10679	2.5863	2.868 down
AT5G47610	7.53078	6.21944	2.481 down
AT5G48375	2.7006	0.38662	4.972 down
AT5G48950	4.48176	3.31845	2.239 down
AT5G49435	4.57582	3.47149	2.149 down
AT5G49448	6.56832	5.53762	2.043 down
AT5G49690	1.9455	0.94253	2.004 down
AT5G49730	7.90781	4.51459	10.506 down
AT5G49740	7.45293	6.33288	2.173 down

AT5G49770	5.65201	2.59417	8.327 down
AT5G50050	1.48376	0.09846	2.612 down
AT5G50115	3.09337	1.96027	2.193 down
AT5G50423	0.86873	0.17812	2.066 down
AT5G50740	8.53125	7.24219	2.443 down
AT5G50770	2.28638	0.56559	3.296 down
AT5G51670	5.87426	4.72382	2.219 down
AT5G51850	7.82698	6.54002	2.440 down
AT5G52320	7.13095	5.57941	2.931 down
AT5G52390	8.43172	7.17024	2.397 down
AT5G52610	2.2169	0.99679	2.329 down
AT5G53200	8.05009	5.85099	4.591 down
AT5G53486	6.00389	4.9711	2.045 down
AT5G53660	8.78803	5.25068	11.610 down
AT5G54190	1.60019	0.07259	2.883 down
AT5G54250	9.35264	7.96975	2.607 down
AT5G54410	1.91402	0.36937	2.917 down
AT5G55110	2.39512	1.21081	2.272 down
AT5G55855	2.28888	0.84369	2.722 down
AT5G56220	8.65021	7.4481	2.300 down
AT5G56720	5.60552	4.53414	2.101 down
AT5G56970	6.33592	5.19702	2.202 down
AT5G57550	2.452	1.00148	2.733 down
AT5G58465	2.65172	0.35398	4.916 down
AT5G59080	4.00168	1.34462	6.307 down
AT5G59130	5.91343	3.93346	3.944 down
AT5G59310	7.20441	5.66739	2.901 down
AT5G59320	6.71984	4.64943	4.200 down
AT5G60630	3.68833	2.47082	2.325 down
AT5G61490	3.19179	1.98289	2.311 down
AT5G61520	6.53334	5.50458	2.040 down
AT5G62280	6.31989	4.72547	3.019 down
AT5G62480	2.40033	1.01643	2.609 down
AT5G62510	6.0268	4.77919	2.374 down
AT5G63140	6.75187	4.86294	3.703 down
AT5G63660	5.1913	3.22302	3.913 down
AT5G65040	5.07929	2.88483	4.577 down
AT5G65070	3.0911	1.69444	2.632 down
AT5G65166	1.23884	0.15987	2.636 down
AT5G65730	9.2657	7.52733	3.336 down
AT5G66040	5.62066	4.44481	2.259 down
AT5G66400	6.2131	4.49428	3.291 down
AT5G66400	6.0607	4.50633	2.937 down

AT5G66815	1.32587	0.19414	2.191 down
AT1G01060	-0.31121	1.29102	3.036 up
AT1G01183	0.87912	2.26136	2.606 up
AT1G03850	6.06901	7.08814	2.026 up
AT1G04171	4.73265	6.07898	2.542 up
AT1G04250	5.68312	7.08912	2.650 up
AT1G04500	0.7333	2.42823	3.237 up
AT1G08105	4.25611	5.53429	2.425 up
AT1G11112	1.01911	2.56853	2.926 up
AT1G12130	0.5327	1.54048	2.010 up
AT1G12210	4.02223	5.37196	2.548 up
AT1G12940	2.9823	4.30585	2.502 up
AT1G13110	2.84351	4.42721	2.997 up
AT1G14960	0.82134	2.33284	2.851 up
AT1G15015	0.70032	2.12764	2.689 up
AT1G15430	0.40715	2.57014	4.478 up
AT1G17545	2.45821	3.50455	2.065 up
AT1G17710	0.03824	1.15373	2.166 up
AT1G27160	0.80874	1.87071	2.087 up
AT1G28170	0.4022	1.46621	2.090 up
AT1G28455	1.72472	2.73356	2.012 up
AT1G28570	3.00854	4.40655	2.635 up
AT1G29790	2.20501	3.48629	2.430 up
AT1G30784	3.07804	4.09722	2.026 up
AT1G32840	3.62556	4.76748	2.206 up
AT1G35186	-0.23478	1.12905	2.573 up
AT1G35710	3.44411	4.69885	2.386 up
AT1G36078	0.18653	2.04559	3.627 up
AT1G36190	0.88368	2.32723	2.719 up
AT1G36550	1.90716	3.23727	2.514 up
AT1G36840	1.56542	2.72347	2.231 up
AT1G37063	3.26922	4.57487	2.471 up
AT1G38203	2.959	4.36032	2.641 up
AT1G38270	1.9454	3.32231	2.597 up
AT1G38416	1.15514	2.611	2.743 up
AT1G38790	0.26115	1.31514	2.076 up
AT1G40095	3.38423	4.45498	2.100 up
AT1G40119	4.17086	5.20173	2.043 up
AT1G40135	5.45066	6.50303	2.073 up
AT1G41710	3.69519	4.94096	2.371 up
AT1G41720	5.36885	6.39586	2.037 up
AT1G41795	1.49598	2.75534	2.393 up
AT1G42320	3.48273	4.618	2.196 up

AT1G42695	1.33023	2.83015	2.828 up
AT1G43230	1.94304	3.86303	3.784 up
AT1G43667	0.19085	1.33013	2.202 up
AT1G43755	4.36363	5.5918	2.342 up
AT1G43950	-0.09172	1.16894	2.396 up
AT1G44010	-0.21285	1.42915	3.120 up
AT1G44080	0.69677	1.92866	2.348 up
AT1G44840	0.49762	2.07966	2.993 up
AT1G48690	0.75958	1.79442	2.048 up
AT1G49570	0.86761	1.94888	2.115 up
AT1G50280	2.78938	4.54504	3.376 up
AT1G50760	1.08891	2.65744	2.966 up
AT1G51210	3.36303	4.88703	2.875 up
AT1G51823	0.34442	1.64073	2.456 up
AT1G51850	0.97309	1.98752	2.020 up
AT1G51915	0.54459	1.59177	2.066 up
AT1G52087	0.87445	2.02692	2.222 up
AT1G52240	0.95161	2.59102	3.115 up
AT1G52770	4.18965	5.89726	3.266 up
AT1G52960	3.23584	4.87522	3.115 up
AT1G53366	-0.0895	1.93799	4.076 up
AT1G53870	0.18792	1.25354	2.093 up
AT1G54430	1.09094	2.7422	3.141 up
AT1G55290	1.98011	3.53706	2.942 up
AT1G55720	1.60746	2.91302	2.471 up
AT1G55964	0.3333	1.64618	2.484 up
AT1G61800	6.93022	8.23542	2.471 up
AT1G62510	4.75786	5.92329	2.243 up
AT1G62530	-0.31253	1.41177	3.304 up
AT1G62920	2.84284	4.10515	2.398 up
AT1G63580	0.23486	1.72741	2.813 up
AT1G64380	4.923	6.91402	3.975 up
AT1G65620	4.1258	5.16024	2.048 up
AT1G66145	0.38388	1.55227	2.247 up
AT1G66990	5.16709	6.20972	2.059 up
AT1G67195	0.87053	2.8058	3.824 up
AT1G68040	1.77917	3.11777	2.529 up
AT1G68860	2.65374	4.0085	2.557 up
AT1G68935	4.00876	5.1253	2.168 up
AT1G70500	2.43548	3.71353	2.425 up
AT1G75080	0.68557	2.14094	2.742 up
AT1G76420	7.5197	8.56963	2.070 up
AT1G78330	1.26224	2.82712	2.958 up

AT2G01360	1.6227	2.67018	2.066 up
AT2G01800	2.0063	3.29065	2.435 up
AT2G01890	5.62419	6.64093	2.023 up
AT2G03110	4.49134	5.7287	2.357 up
AT2G03250	1.13025	2.40816	2.424 up
AT2G04170	1.99403	3.18661	2.285 up
AT2G04180	0.82421	1.86805	2.061 up
AT2G05020	0.24781	1.41313	2.242 up
AT2G05040	1.39239	2.71482	2.500 up
AT2G05185	4.1568	5.34582	2.279 up
AT2G05680	0.63541	2.34514	3.270 up
AT2G05740	-0.09137	1.09708	2.279 up
AT2G06330	3.97165	5.06352	2.131 up
AT2G06800	1.23357	2.72456	2.810 up
AT2G06917	3.57134	4.76588	2.288 up
AT2G07110	0.19334	1.69824	2.838 up
AT2G07395	3.50107	4.55668	2.078 up
AT2G07430	1.51588	2.72744	2.315 up
AT2G07510	0.51385	2.27279	3.384 up
AT2G09795	0.45598	1.68709	2.347 up
AT2G10070	1.29896	2.78625	2.803 up
AT2G10105	1.70125	2.79938	2.140 up
AT2G10140	3.2795	4.41546	2.197 up
AT2G10220	1.58554	3.37881	3.465 up
AT2G10730	1.92564	3.14341	2.325 up
AT2G10990	0.36931	1.84966	2.790 up
AT2G11230	2.84206	4.10551	2.400 up
AT2G11360	0.53364	1.70105	2.246 up
AT2G11530	1.18906	3.03711	3.600 up
AT2G11852	1.71949	2.97538	2.388 up
AT2G12250	1.24637	2.5848	2.528 up
AT2G12325	-0.07346	1.00628	2.113 up
AT2G12390	1.91753	2.92557	2.011 up
AT2G12557	1.96753	3.2576	2.445 up
AT2G12820	0.03575	1.84006	3.492 up
AT2G13870	2.5241	4.18011	3.151 up
AT2G14030	0.9247	2.01566	2.130 up
AT2G14690	1.84281	3.01281	2.250 up
AT2G15190	3.94224	4.99387	2.072 up
AT2G15765	0.77816	1.80141	2.032 up
AT2G16100	1.39257	2.448	2.078 up
AT2G16610	0.29793	1.49985	2.300 up
AT2G16930	0.77579	2.64641	3.656 up

AT2G17470	2.72866	3.92483	2.291 up
AT2G18030	2.54934	3.98802	2.710 up
AT2G18530	1.31734	2.47462	2.230 up
AT2G18870	1.20837	2.3044	2.137 up
AT2G20350	0.99612	2.40541	2.656 up
AT2G21650	3.08994	4.53597	2.724 up
AT2G22040	1.2768	2.28496	2.011 up
AT2G22860	0.82751	2.15537	2.510 up
AT2G23100	1.62867	3.11948	2.810 up
AT2G23570	1.90267	3.16387	2.396 up
AT2G24120	2.08358	3.23768	2.225 up
AT2G24160	3.69863	4.90567	2.308 up
AT2G25565	2.09005	3.28077	2.282 up
AT2G25710	2.05572	3.37706	2.498 up
AT2G27270	0.02576	1.2673	2.364 up
AT2G27700	2.9897	4.05699	2.095 up
AT2G27710	0.71036	2.47263	3.392 up
AT2G28170	1.51108	2.70699	2.290 up
AT2G29220	0.97635	2.81247	3.570 up
AT2G29670	5.65658	7.03258	2.595 up
AT2G31082	-0.11143	1.10816	2.328 up
AT2G31345	0.0061	1.26861	2.399 up
AT2G32487	0.01373	1.03499	2.029 up
AT2G32530	5.45613	7.32885	3.662 up
AT2G33310	1.78693	3.22232	2.704 up
AT2G33480	4.21517	5.7319	2.861 up
AT2G34820	1.32885	2.48216	2.224 up
AT2G35387	5.91396	6.93778	2.033 up
AT2G35637	2.18518	3.24993	2.091 up
AT2G36940	5.99565	7.11849	2.177 up
AT2G39370	0.3962	2.19958	3.490 up
AT2G41090	7.36125	8.50772	2.213 up
AT2G41312	0.43069	1.59659	2.243 up
AT2G42660	3.32395	4.55335	2.344 up
AT2G43670	1.86722	3.05988	2.285 up
AT2G44840	3.74696	4.76371	2.023 up
AT2G45406	2.72145	4.08132	2.566 up
AT3G04390	1.01856	2.18936	2.251 up
AT3G04943	0.36417	1.50284	2.201 up
AT3G05300	1.66498	3.12826	2.757 up
AT3G05650	4.96775	6.11582	2.216 up
AT3G09585	0.97576	2.04518	2.098 up
AT3G12835	1.75174	3.06152	2.479 up

AT3G13630	0.47942	1.50733	2.039 up
AT3G16210	0.89517	2.11777	2.333 up
AT3G16690	0.32141	1.33339	2.016 up
AT3G17190	1.72595	2.85069	2.180 up
AT3G21965	0.55749	2.36499	3.500 up
AT3G22580	1.14143	2.48586	2.539 up
AT3G22930	1.38017	2.65803	2.424 up
AT3G24310	3.01355	4.05336	2.055 up
AT3G24380	1.73914	2.83793	2.141 up
AT3G25440	0.5092	1.79078	2.431 up
AT3G26020	1.61987	2.89994	2.428 up
AT3G26270	-0.0188	1.16243	2.267 up
AT3G26620	1.18449	2.51581	2.516 up
AT3G26742	1.60521	3.4333	3.550 up
AT3G28155	2.54532	3.7294	2.272 up
AT3G29270	3.5515	4.55867	2.009 up
AT3G29641	1.81392	3.05979	2.371 up
AT3G29650	3.55035	5.15669	3.044 up
AT3G30383	1.83587	2.88529	2.069 up
AT3G30505	2.26149	3.45108	2.280 up
AT3G30740	4.41015	5.50562	2.136 up
AT3G30769	1.91612	3.30622	2.620 up
AT3G30816	5.26539	6.34581	2.114 up
AT3G30830	1.28737	3.15371	3.646 up
AT3G31310	0.24649	1.63217	2.612 up
AT3G31314	2.17217	3.35547	2.270 up
AT3G31359	1.8211	3.68501	3.639 up
AT3G31367	3.59959	4.68558	2.122 up
AT3G31380	0.80405	2.05246	2.375 up
AT3G31996	2.13034	3.47677	2.542 up
AT3G32040	1.83706	2.91577	2.112 up
AT3G32047	0.1657	1.42481	2.393 up
AT3G32373	1.723	2.92415	2.299 up
AT3G32902	2.00083	3.56356	2.954 up
AT3G33148	1.53362	2.75087	2.325 up
AT3G33154	0.22966	1.30659	2.109 up
AT3G33565	0.94952	2.32617	2.596 up
AT3G42340	0.27507	1.73933	2.759 up
AT3G42478	3.16029	4.18455	2.033 up
AT3G42520	2.04616	3.26197	2.322 up
AT3G42590	2.9834	4.37517	2.624 up
AT3G42716	4.09799	5.12166	2.033 up
AT3G42719	2.29936	3.80614	2.841 up

AT3G42721	2.44857	3.82046	2.588 up
AT3G42794	0.2466	1.66147	2.666 up
AT3G42935	3.29271	4.2966	2.005 up
AT3G43040	0.28178	1.52927	2.374 up
AT3G43148	1.56903	2.62697	2.081 up
AT3G43152	3.61936	4.90416	2.436 up
AT3G43681	1.22381	2.37095	2.214 up
AT3G43930	2.43204	4.08491	3.144 up
AT3G44035	1.22307	2.24614	2.032 up
AT3G44117	2.02868	3.48425	2.742 up
AT3G45510	0.76546	1.84315	2.110 up
AT3G45638	1.98735	3.32292	2.523 up
AT3G45755	0.80562	2.02208	2.323 up
AT3G45940	4.66493	6.22013	2.938 up
AT3G45950	3.87621	5.15702	2.429 up
AT3G49010	1.39285	2.58225	2.280 up
AT3G49330	1.54092	3.35099	3.506 up
AT3G49780	1.44839	2.50214	2.075 up
AT3G49980	0.43443	1.77062	2.524 up
AT3G50301	1.36631	2.9213	2.938 up
AT3G50560	0.87817	2.67031	3.463 up
AT3G51070	1.27057	2.56236	2.448 up
AT3G51075	2.16114	3.40744	2.372 up
AT3G52690	1.65799	3.1553	2.823 up
AT3G54085	0.69326	2.14924	2.743 up
AT3G56210	0.52992	2.21699	3.220 up
AT3G57460	0.97711	2.44657	2.769 up
AT3G57800	2.86216	3.91683	2.077 up
AT3G59884	0.05346	1.1853	2.191 up
AT3G60560	0.25179	1.5325	2.429 up
AT3G61210	2.60169	4.00153	2.638 up
AT3G61500	0.87654	2.43079	2.936 up
AT3G61825	3.21216	4.25984	2.067 up
AT3G61826	0.47584	1.86493	2.619 up
AT3G61880	1.78573	3.78785	4.005 up
AT3G61920	6.92285	8.10693	2.272 up
AT3G62040	5.46219	6.66795	2.306 up
AT3G62499	0.59924	1.95003	2.550 up
AT4G00005	2.28658	3.41791	2.190 up
AT4G00310	1.60901	4.18956	5.981 up
AT4G03050	2.24738	3.77583	2.884 up
AT4G03060	3.00508	4.49695	2.812 up
AT4G03063	2.11649	3.97207	3.618 up



AT4G03470	2.25796	4.42649	4.495 up
AT4G03590	0.43514	1.72629	2.447 up
AT4G03732	2.33689	3.56249	2.338 up
AT4G03745	1.80128	3.22982	2.691 up
AT4G03816	3.77203	4.86891	2.138 up
AT4G03981	1.82313	3.18174	2.564 up
AT4G04170	2.16369	3.17522	2.016 up
AT4G04260	2.27281	3.35074	2.111 up
AT4G04280	0.76167	1.81778	2.079 up
AT4G04290	1.07922	2.1736	2.135 up
AT4G04495	2.13884	3.33695	2.294 up
AT4G05594	-0.15362	0.89708	2.071 up
AT4G06502	0.4576	1.87612	2.673 up
AT4G06556	0.39495	1.67838	2.434 up
AT4G06571	1.37292	2.3902	2.024 up
AT4G06574	2.95646	3.96147	2.006 up
AT4G06617	2.65384	4.33948	3.216 up
AT4G06654	1.39609	3.0995	3.256 up
AT4G06708	2.63904	4.29627	3.154 up
AT4G07315	0.9299	2.7997	3.654 up
AT4G07334	0.99629	2.18272	2.275 up
AT4G07339	0.35148	1.55036	2.295 up
AT4G07605	1.96236	3.03934	2.109 up
AT4G07699	3.08218	4.13552	2.075 up
AT4G07917	1.92897	4.06558	4.397 up
AT4G07938	2.09014	3.77776	3.221 up
AT4G08115	4.99393	6.03054	2.051 up
AT4G08347	-0.041	1.09649	2.199 up
AT4G09410	1.53666	3.12999	3.017 up
AT4G10220	0.01493	1.06018	2.063 up
AT4G11350	0.01586	1.14785	2.191 up
AT4G11890	1.0148	2.43919	2.684 up
AT4G15061	-0.29882	1.31836	3.067 up
AT4G15248	-0.07017	1.17722	2.374 up
AT4G15300	0.13755	1.33332	2.290 up
AT4G16940	0.52489	2.50716	3.951 up
AT4G16990	1.88233	3.34774	2.761 up
AT4G17470	0.43137	1.57665	2.211 up
AT4G18250	1.05662	3.1263	4.197 up
AT4G19710	1.59766	2.76403	2.244 up
AT4G19750	1.48405	2.62624	2.207 up
AT4G19790	0.84621	2.10971	2.400 up
AT4G20810	4.96594	6.03016	2.091 up

AT4G21192	2.31407	3.38526	2.101 up
AT4G21630	2.01674	3.49465	2.785 up
AT4G25631	2.62806	3.81233	2.272 up
AT4G26070	0.45805	2.02162	2.955 up
AT4G27620	3.32673	4.5303	2.303 up
AT4G32860	1.35893	2.36152	2.003 up
AT4G33355	2.09634	3.2717	2.258 up
AT4G34065	0.87081	2.23231	2.569 up
AT4G34415	0.0159	2.6368	6.151 up
AT4G34881	0.57444	2.69992	4.363 up
AT4G35810	1.5947	3.14005	2.918 up
AT4G37682	4.34613	5.39877	2.074 up
AT5G01520	0.54896	2.46598	3.776 up
AT5G02630	3.12539	4.5573	2.698 up
AT5G03500	2.01613	3.03762	2.030 up
AT5G04386	-0.24168	1.0584	2.462 up
AT5G05390	1.31192	2.44308	2.190 up
AT5G05920	0.52058	1.69683	2.259 up
AT5G06270	2.32172	3.41169	2.128 up
AT5G09990	1.25385	2.46996	2.323 up
AT5G10500	1.95077	3.27253	2.499 up
AT5G11320	-0.01936	1.18644	2.306 up
AT5G11510	0.95618	1.97601	2.027 up
AT5G11977	-0.24262	0.95898	2.299 up
AT5G13205	3.21393	4.28766	2.104 up
AT5G13655	1.8295	2.89429	2.091 up
AT5G16030	6.98901	8.26207	2.416 up
AT5G16410	2.37086	3.75238	2.605 up
AT5G16740	0.29474	1.95916	3.169 up
AT5G19097	1.46076	3.15091	3.226 up
AT5G19470	2.40233	3.5763	2.256 up
AT5G20790	3.65854	5.24023	2.993 up
AT5G22044	-0.31994	1.86499	4.547 up
AT5G22540	0.52958	2.2885	3.384 up
AT5G22810	0.77827	1.86954	2.130 up
AT5G23650	0.30986	1.35429	2.062 up
AT5G24065	5.71163	6.75608	2.062 up
AT5G24230	1.4243	2.62129	2.292 up
AT5G24560	1.5246	2.83456	2.479 up
AT5G25180	1.00024	2.3656	2.576 up
AT5G25770	4.57641	6.15069	2.977 up
AT5G26020	0.17277	2.14982	3.936 up
AT5G26300	0.40652	1.63616	2.345 up

AT5G26620	1.95237	3.25693	2.470 up
AT5G26642	0.0513	2.86243	7.018 up
AT5G26731	2.10225	3.1501	2.067 up
AT5G27037	0.60865	2.41863	3.506 up
AT5G27890	2.52329	3.77145	2.375 up
AT5G28487	0.21046	2.28295	4.206 up
AT5G28550	-0.07247	1.91195	3.957 up
AT5G28596	1.26015	3.85032	6.021 up
AT5G28996	4.64248	6.50762	3.643 up
AT5G29022	2.27931	3.94516	3.173 up
AT5G29035	1.72198	3.06538	2.537 up
AT5G29231	2.14819	3.52169	2.590 up
AT5G29646	-0.27138	0.79924	2.100 up
AT5G30545	2.19019	3.2903	2.143 up
AT5G31032	2.42415	3.89429	2.770 up
AT5G31355	0.98863	3.02456	4.100 up
AT5G31702	0.79929	2.61728	3.525 up
AT5G31753	0.98261	2.57371	3.012 up
AT5G31919	0.55751	1.83479	2.423 up
AT5G32042	1.13797	2.69036	2.933 up
AT5G32576	2.15995	4.04493	3.693 up
AT5G32591	2.95544	4.13394	2.263 up
AT5G32592	2.10123	3.77936	3.200 up
AT5G32613	-0.20231	1.25006	2.736 up
AT5G33200	-0.31218	0.74208	2.076 up
AT5G33252	3.13229	4.15346	2.029 up
AT5G33258	0.04222	1.47106	2.692 up
AT5G33385	4.05918	5.36172	2.466 up
AT5G33431	1.26175	2.92922	3.176 up
AT5G34412	1.36941	2.69048	2.498 up
AT5G34602	2.62765	4.42104	3.466 up
AT5G34780	5.17788	6.22446	2.065 up
AT5G34851	1.08766	2.46696	2.601 up
AT5G34855	2.56564	4.6176	4.146 up
AT5G34920	1.45605	3.21037	3.373 up
AT5G34925	0.27642	1.4335	2.230 up
AT5G35725	0.57371	2.796	4.666 up
AT5G36730	0.21013	1.34058	2.189 up
AT5G38317	-0.26201	1.60228	3.640 up
AT5G38570	-0.04741	1.03092	2.111 up
AT5G38780	0.81221	2.32475	2.853 up
AT5G39330	0.09002	1.5033	2.663 up
AT5G39520	0.59213	2.05561	2.757 up

AT5G39693	-0.19228	1.07687	2.410 up
AT5G39810	1.37038	2.84637	2.781 up
AT5G41494	0.70521	2.36753	3.165 up
AT5G42460	1.56062	3.34523	3.445 up
AT5G42957	1.74247	3.26023	2.863 up
AT5G43690	-0.2797	2.0801	5.132 up
AT5G44570	2.29534	4.0616	3.401 up
AT5G44770	0.04237	1.94993	3.751 up
AT5G46000	0.71573	1.98305	2.407 up
AT5G46040	1.97688	3.41821	2.715 up
AT5G46350	1.26748	3.10421	3.572 up
AT5G46630	3.63307	4.71724	2.120 up
AT5G46670	0.62657	1.96104	2.521 up
AT5G48110	-0.48859	0.81235	2.463 up
AT5G48890	1.66506	2.73372	2.097 up
AT5G49750	0.24714	1.907	3.159 up
AT5G50760	0.93714	2.41246	2.780 up
AT5G51360	1.64068	2.65894	2.025 up
AT5G51780	-0.05361	1.23718	2.446 up
AT5G53900	4.40239	5.4848	2.117 up
AT5G55620	5.41188	6.4956	2.119 up
AT5G59050	2.00084	3.71793	3.287 up
AT5G59090	-0.12696	1.79644	3.793 up
AT5G59540	3.35243	4.40616	2.075 up
AT5G59650	5.12935	6.2796	2.219 up
AT5G60780	2.15522	3.43992	2.436 up
AT5G61890	3.00127	4.04853	2.066 up
AT5G63040	1.06601	2.17073	2.150 up
AT5G63990	0.31344	1.68888	2.594 up
AT5G64800	-0.26121	2.04254	4.937 up
AT5G66930	1.98703	3.32427	2.526 up
AT5G67411	2.77907	3.96531	2.275 up
ATMG00450	3.7589	5.21951	2.752 up
ATMG00513	8.81115	9.89299	2.116 up
ATMG00990	6.78848	8.07567	2.440 up