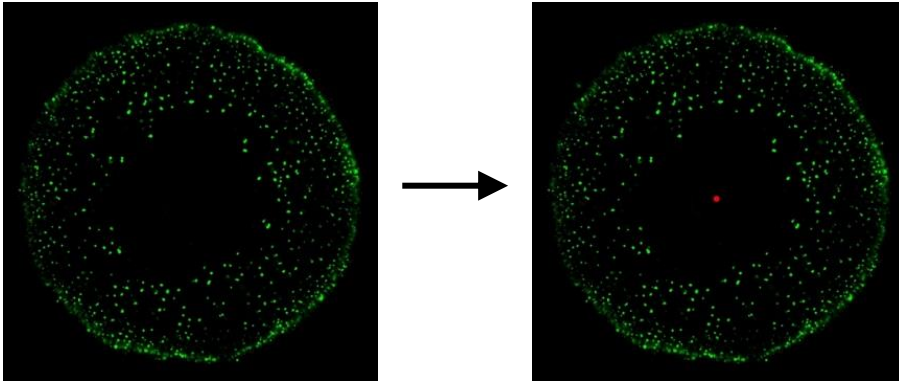


Characterization of essential oil distribution in the root cross-section of *Valeriana officinalis* L. s.l. by using histological imaging technique

Penzkofer M, Baron A, Naumann A, Krähmer A, Schulz H, Heuberger H

Analization steps and software macros for localization of the

① oil droplets, ② root-slice area and edges, as well as ③ the root-slice center.



①

**** Macro Oil Droplets ****

```
run("8-bit");
setThreshold(80, 255);
setOption("BlackBackground",
false);
run("Make Binary", "thresholded remaining
black");
run("Dilate");
run("Median...", "radius=4");
run("Analyze Particles...",
"size=350-7000 circularity=0.50-
1.00 show=Masks display clear");
```

②

**** Macro Area and Edge ****

```
run("8-bit");
setAutoThreshold("Huang");
setThreshold(0, 0);
run("Make Binary");
run("Invert");
run("Gaussian Blur...", "sigma=20");
setAutoThreshold("Huang");
setThreshold(1, 255);
run("Make Binary");
run("Fill Holes");
run("Create Selection");
run("Enlarge...", "enlarge=-100");
run("Enlarge...", "enlarge=100");
setBackground(255, 255, 255);
run("Clear Outside");
run("Select None");
run("Minimum...", "radius=60");
run("Create Selection");
run("Set Measurements...", "area
centroid center perimeter feret's display
redirect=None decimal=3");
run("Analyze Particles...",
"size=100000-Infinity
show=Outlines display" );
```

③

**** Macro Center ****

```
run("Split Channels");
selectWindow(img_rgb_title +
(red));
setThreshold(20, 255);
run("Make Binary", "thresholded remaining
black");
run("Analyze Particles...",
"size=500-Infinity circularity=0.80
-1.00 show=Masks display clear");
```

