

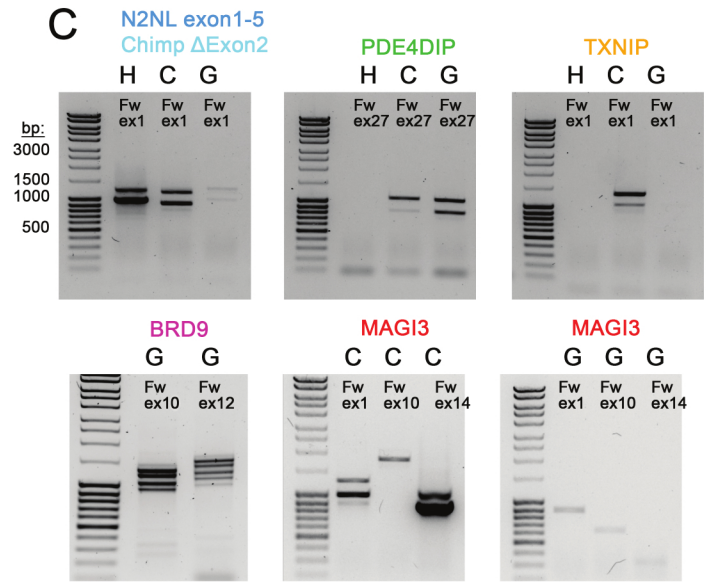
A

Chimp	NOTCH2NL exons	Additional Genome Support	Breakpoint Coordinates (hg38 BLAT)
ΔExon2 only	1,3-5		
ΔExon2	1,3-5	BAC: CH251-414E24	chr1:148,675,676-148,623,447
LRIG			
ΔExon2	1,3-5	BAC:CH251-305M22 BAC:CH251-397N13	chr1:148,675,676-148,623,447
ΔExon2	1,3-5	BAC:CH251-243D3 BAC:CH251-485H13	chr1:148,675,676-148,623,447
MAGI3 5' 3-5		WGS:AACZ03011046.1 WGS:AADA01172734.1	chr1:113,651,659-146,175,285
MAGI3 3' 3-5		WGS:AACZ03149796.1 WGS:AADA01170825.1	chr1:113,536,139-146,169,274
TXNIP	2-5	WGS:AACZ03149820.1	chr1:145,995,530-146,226,704
PDE4DIP	2-5	WGS:AADA01102044.1 WGS:AACZ03011197.1 WGS:AACZ03149689.1	chr1:149,005,377-149,426,133
NOTCH2	1-5		

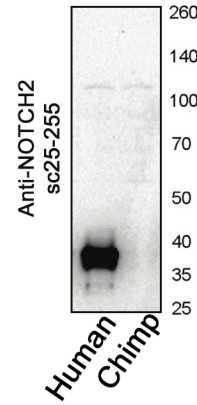
B

Gorilla	NOTCH2NL exons	Genome Support	Breakpoint Coordinates (hg38 BLAT)
PDE4DIP	2-5	BAC: CH277-26C18 TI: 1679409700 TI: 2019116386 TI: 1680614711 TI: 2192386756	chr1:149,005,377-149,426,133
MAGI3	3-5	TI: 1671716786 TI: 1671781255 TI: 2033420236	chr1:113,651,629-146,175,285
BRD9	3-5	BAC: CH277-57H6	chr1:147,069,489-148,619,452 chr5:872,995-chr1:147,072,407

C

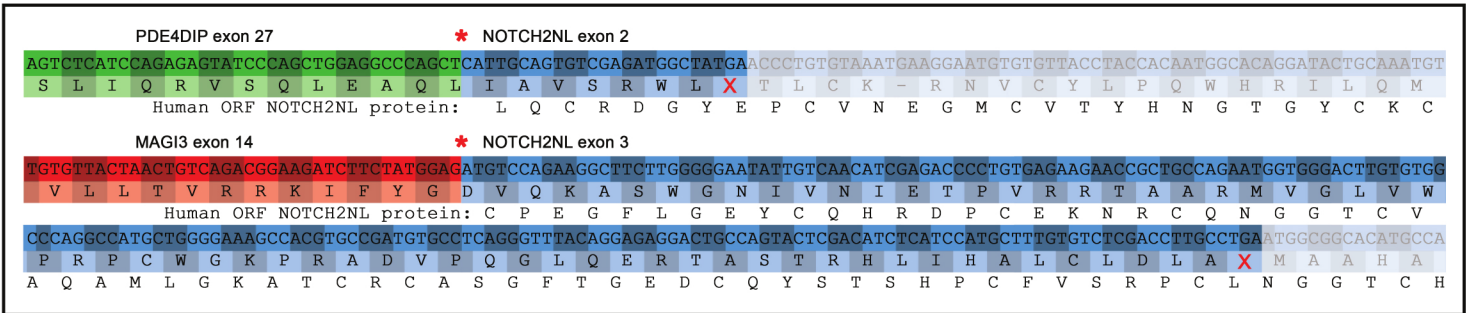


D

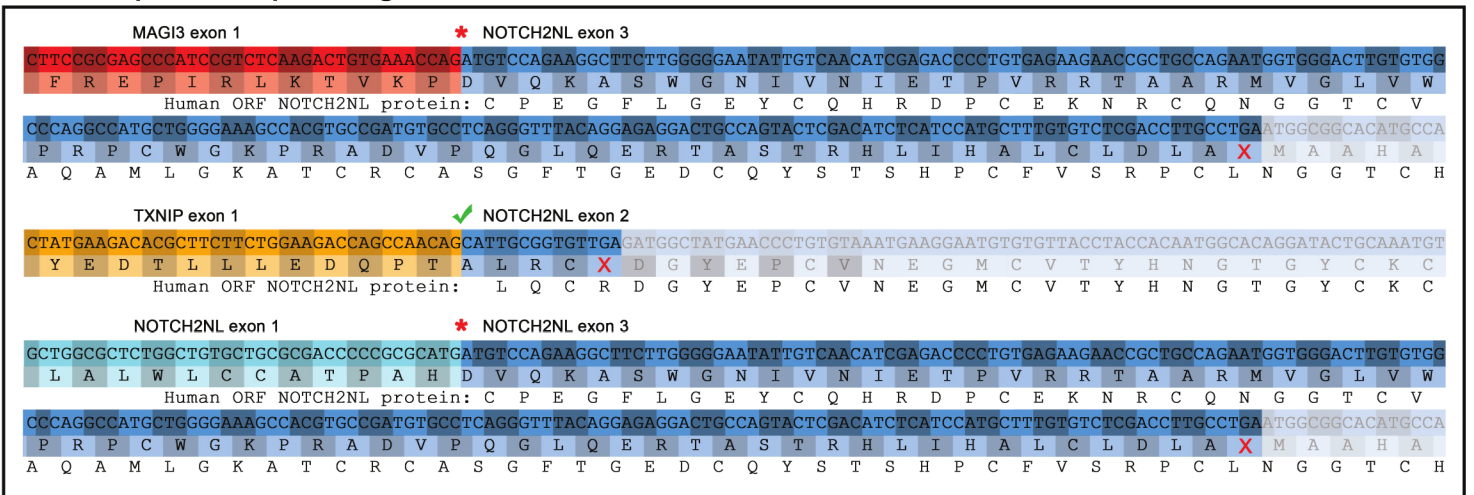


F

LCA genes * Frameshift splice junction ✓ In-frame splice junction ✗ Stop codon



Chimpanzee specific genes



Gorilla specific genes

