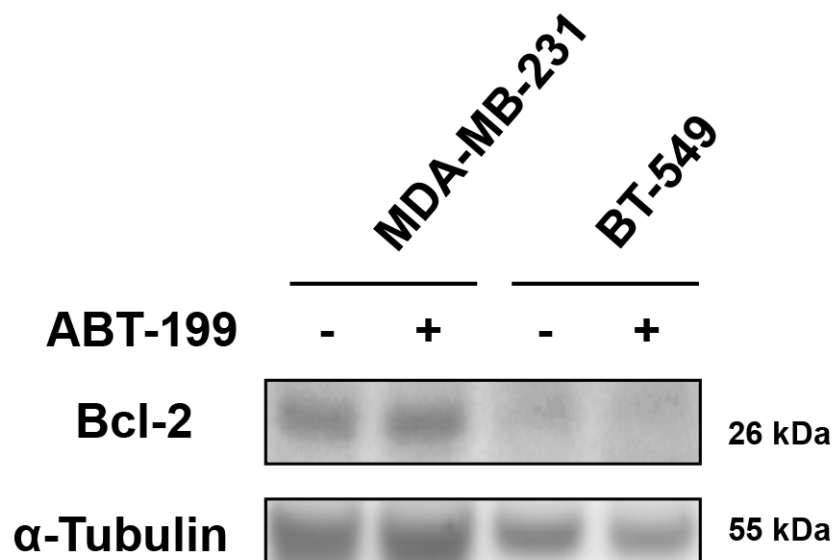


Bcl-2 inhibition sensitizes triple-negative human breast cancer cells to doxorubicin

SUPPLEMENTARY MATERIALS



Supplementary Figure 1: No effect of ABT-199 on the protein expression of Bcl-2 in breast cancer cell lines. MDA-MB-231 and BT-459 cells were cultured with ABT-199 at the doses of 10 μ M and 15 μ M, respectively. After 48 h, the cells were harvested and examined for the protein expression of Bcl-2. α -Tubulin was used as a control.