

Supplementary Material 3. Controlled Abciximab and Device Investigation to Lower Late Angioplasty Complications (CADILLAC) score

Seven variables selected from the initial multivariate model were weighted proportionally to their respective odds ratio for 1-year mortality (age >65 years [2 points], Killip class 2/3 [3 points], baseline left ventricular (LV) ejection fraction <40% [4 points], anemia [2 points], renal insufficiency [3 points], triple-vessel disease [2 points], and post-procedural thrombolysis in myocardial infarction (MI) flow grade [2 points]). The observed rates of 1-year mortality according to this scoring system are shown in **Figure**.

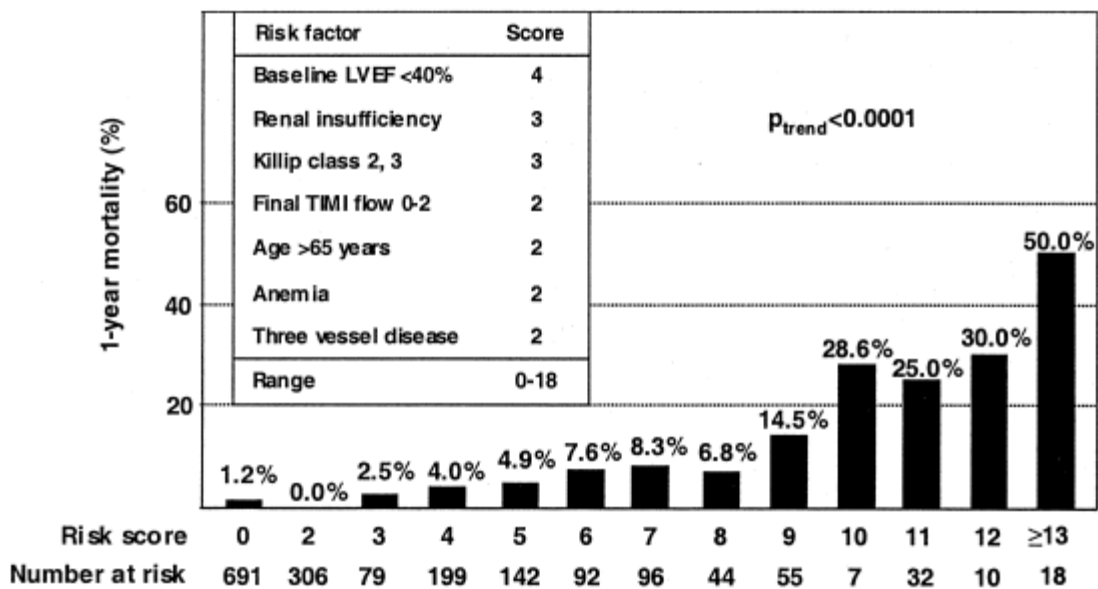


Figure. Integer scoring system and corresponding 1-year mortality rates. LVEF, left ventricular ejection fraction.