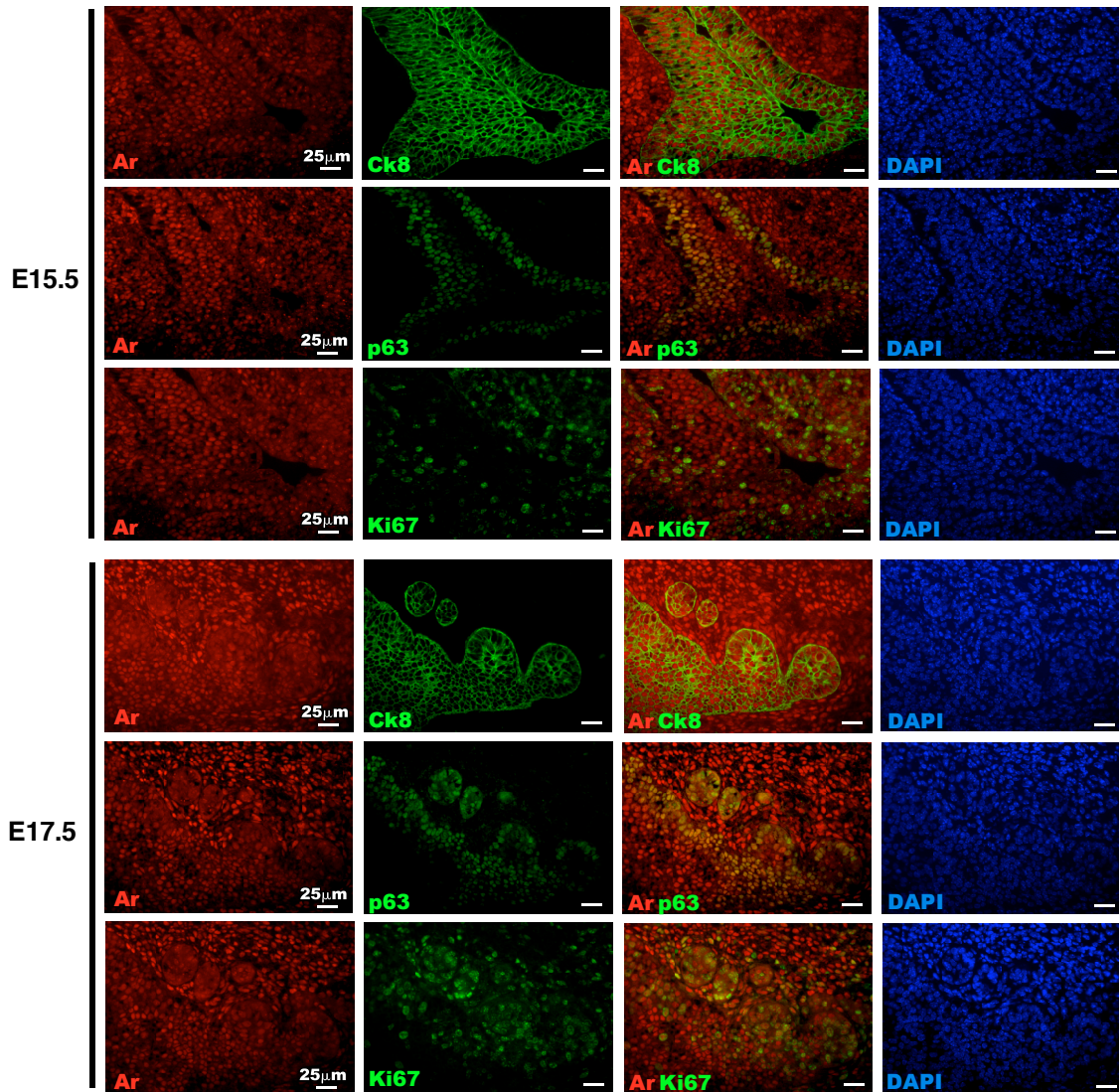
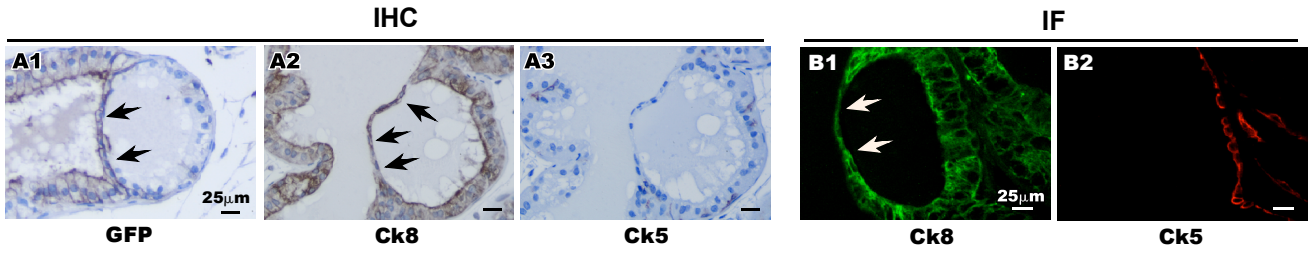


Supplemental Figure 1



Supplemental Figure 2



Supplemental Figure 3

Supplemental Table 1

Supporting data for Figure 2							
E15.5	GFP+ in UGE	GFP+ in UGM	GFP+UGE/GFP+UGM	E17.5	GFP+ in UGE	GFP+ in UGM	GFP+UGE/GFP+UGM
#1	29	72	40.3	#1	231	396	58.3
#2	47	145	32.4	#2	236	423	55.8
#3	47	109	43.1	#3	309	421	73.4
Total	123	326	37.7	Total	776	1240	62.6
		Mean	38.6			Mean	62.5
		SD	5.5			SD	9.5

Supplemental Table 2

Supporting data For Figure 3 I							
R26RmTmG/+ Axin2CreERT2/+	Ki67+ E-cad+	Total E-cad	Percentage	R26RmTmG/+ ArL/Y Axin2CreERT2/+	Ki67+ E-cad+	Total E-cad	Percentage
#1	122	826	14.8	#1	36	756	4.8
#2	102	881	11.6	#2	41	573	7.1
#3	130	748	17.4	#3	20	669	2.9
		Mean	14.6			Mean	4.9
		SD	2.9			SD	2.1
R26RmTmG/+ Axin2CreERT2/+	Ar+ E-cad+	Total E-cad	Percentage	R26RmTmG/+ ArL/Y Axin2CreERT2/+	Ar+ E-cad+	Total E-cad	Percentage
#1	851	857	99.3	#1	59	740	7.9
#2	890	903	98.6	#2	74	625	11.8
#3	727	731	99.5	#3	38	719	5.3
		Mean	99.1			Mean	8.3
		SD	0.5			SD	3.3

Supplemental Table 3

Supporting data For Figure 4 D			
R26RmTmG/+ Axin2CreERT2/+	Ki67 + cell in 1000 Epithelial cells (M1)	Ki67 + cell in 1000 Epithelial cells (M2)	Ki67+ in 1000 Epithelial cells(M3)
#1	52	36	50
#2	45	40	42
#3	47	33	34
Mean	48	36.3	42
SD	2.9	2.9	6.5
R26RmTmG/+ ArL/Y Axin2CreERT2/+	Ki67 + cell in 1000 Epithelial cells (M1)	Ki67 + cell in 1000 Epithelial cells (M2)	Ki67+ in 1000 Epithelial cells(M3)
#1	14	15	21
#2	21	18	20
#3	23	12	14
Mean	19.3	15	18.3
SD	3.9	2.4	3.1

Supplemental Table 4

Supporting data For Figure 5 D			
R26RmTmG/+ Axin2CreERT2/+	Ki67 + cell in 1000 Epithelial cells (M1)	Ki67 + cell in 1000 Epithelial cells (M2)	Ki67+ in 1000 Epithelial cells(M3)
#1	52	42	50
#2	56	37	46
#3	49	44	44
Mean	52.3	41	47
SD	2.9	2.9	2.5

R26RmTmG/+ ArL/Y Axin2CreERT2/+	Ki67 + cell in 1000 Epithelial cells (M1)	Ki67 + cell in 1000 Epithelial cells (M2)	Ki67+ in 1000 Epithelial cells(M3)
#1	33	18	29
#2	26	27	24
#3	29	15	23
Mean	29.3	20	25.3
SD	2.9	5.1	2.6

Supplemental Table 5

Supporting data For Figure 5 F Before Regeneration								
AP	R26RmTmG/+ Axin2CreERT2/+	GFP+ cells	Total cells	Percentage	R26RmTmG/+ ArL/Y Axin2CreERT2/+	GFP+ cells	Total cells	Percentage
#1		74	574	13.1	#1	65	558	11.7
#2		35	607	5.8	#2	18	543	3.3
#3		45	549	8.2	#3	29	571	5.1
		Mean		9		Mean		6.7
		SD		3.7		SD		4.4
DLP	R26RmTmG/+ Axin2CreERT2/+	GFP+ cells	Total cells	Percentage	R26RmTmG/+ ArL/Y Axin2CreERT2/+	GFP+ cells	Total cells	Percentage
#1		56	507	11.2	#1	43	493	8.7
#2		29	551	5.3	#2	17	522	3.3
#3		32	486	6.7	#3	18	519	3.6
		Mean		7.7		Mean		5.2
		SD		3.1		SD		3
VP	R26RmTmG/+ Axin2CreERT2/+	GFP+ cells	Total cells	Percentage	R26RmTmG/+ ArL/Y Axin2CreERT2/+	GFP+ cells	Total cells	Percentage
#1		48	511	9.5	#1	30	470	6.4
#2		15	483	3.2	#2	5	454	1.1
#3		22	479	4.7	#3	16	477	2.7
		Mean		5.8		Mean		3.4
		SD		3.3		SD		2.7
Supporting data For Figure 5 F After Regeneration								
AP	R26RmTmG/+ Axin2CreERT2/+	GFP+ cells	Total cells	Percentage	R26RmTmG/+ ArL/Y Axin2CreERT2/+	GFP+ cells	Total cells	Percentage
#1		1170	2408	48.6	#1	381	2270	16.8
#2		1975	2634	75	#2	572	2436	23.5
#3		1285	2536	50.7	#3	329	2098	15.7
		Mean		58.1		Mean		18.7
		SD		14.7		SD		4.2
DLP	R26RmTmG/+ Axin2CreERT2/+	GFP+ cells	Total cells	Percentage	R26RmTmG/+ ArL/Y Axin2CreERT2/+	GFP+ cells	Total cells	Percentage
#1		1039	2083	49.9	#1	312	2095	14.9
#2		818	2217	36.9	#2	519	1974	26.3
#3		1016	2259	45	#3	342	1935	17.7
		Mean		43.9		Mean		19.6
		SD		6.6		SD		5.9
VP	R26RmTmG/+ Axin2CreERT2/+	GFP+ cells	Total cells	Percentage	R26RmTmG/+ ArL/Y Axin2CreERT2/+	GFP+ cells	Total cells	Percentage
#1		567	1978	28.7	#1	189	1807	10.5
#2		628	1969	31.9	#2	367	1942	18.9
#3		702	2013	34.9	#3	167	1883	8.9
		Mean		31.8		Mean		12.8
		SD		3.1		SD		5.4