

Supplementary information

TITLE

Novel interaction between Alzheimer's disease-related protein presenilin 1 and glutamate transporter 1

AUTHORS

Zoltowska Katarzyna Marta*, Maesako Masato*, Meier Joshua, Berezovska Oksana#

* Contributed equally

Corresponding author

ENTIRE WESTERN BLOT GELS

Figure 1A

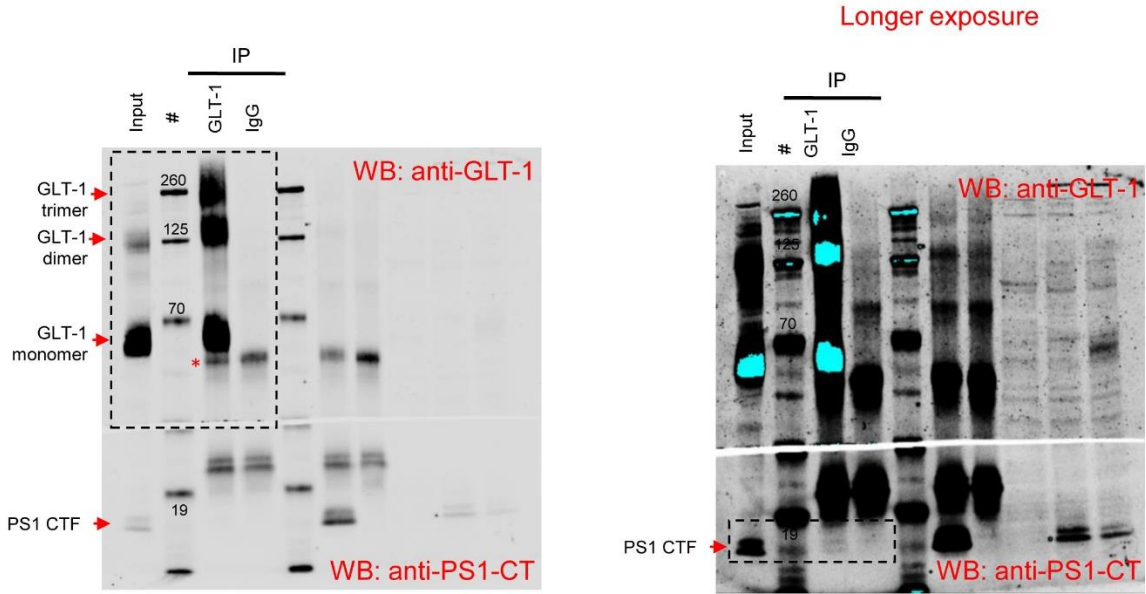
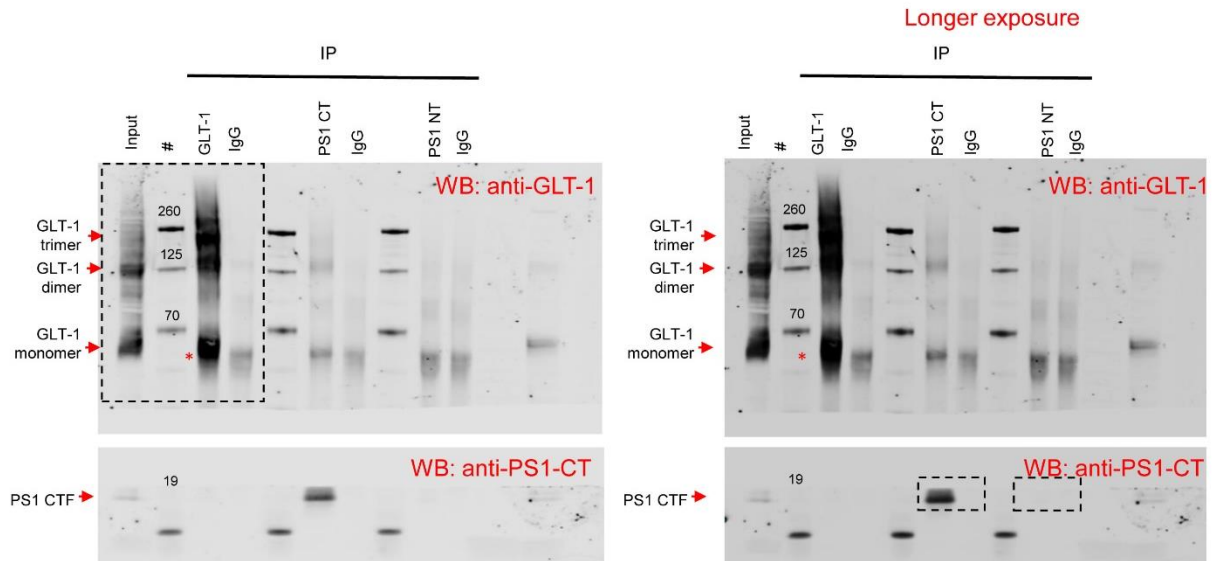


Figure 1C



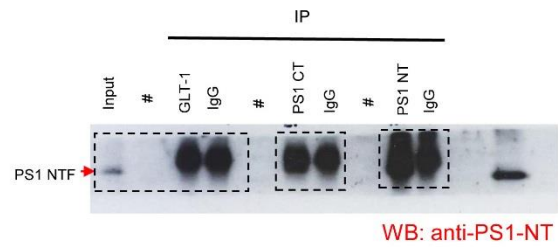
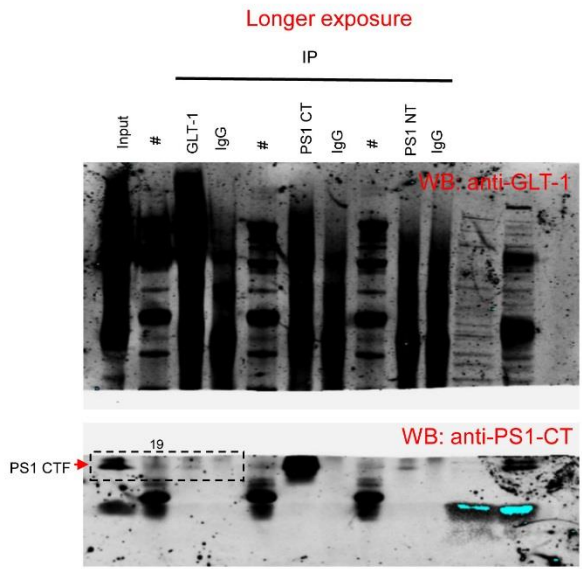
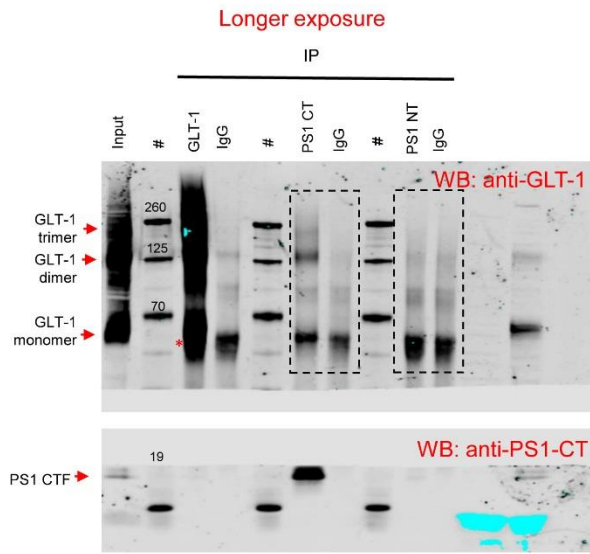


Figure 2A

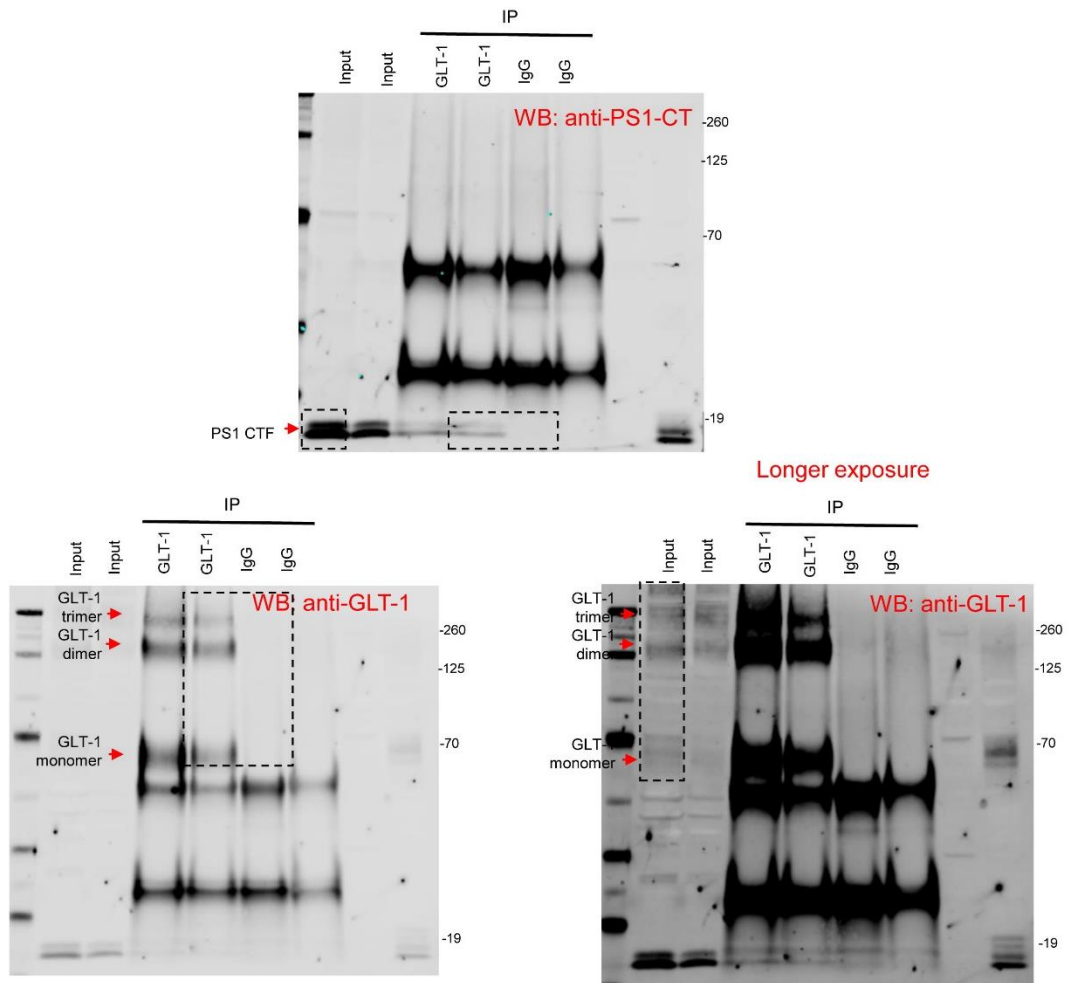


Figure 2D

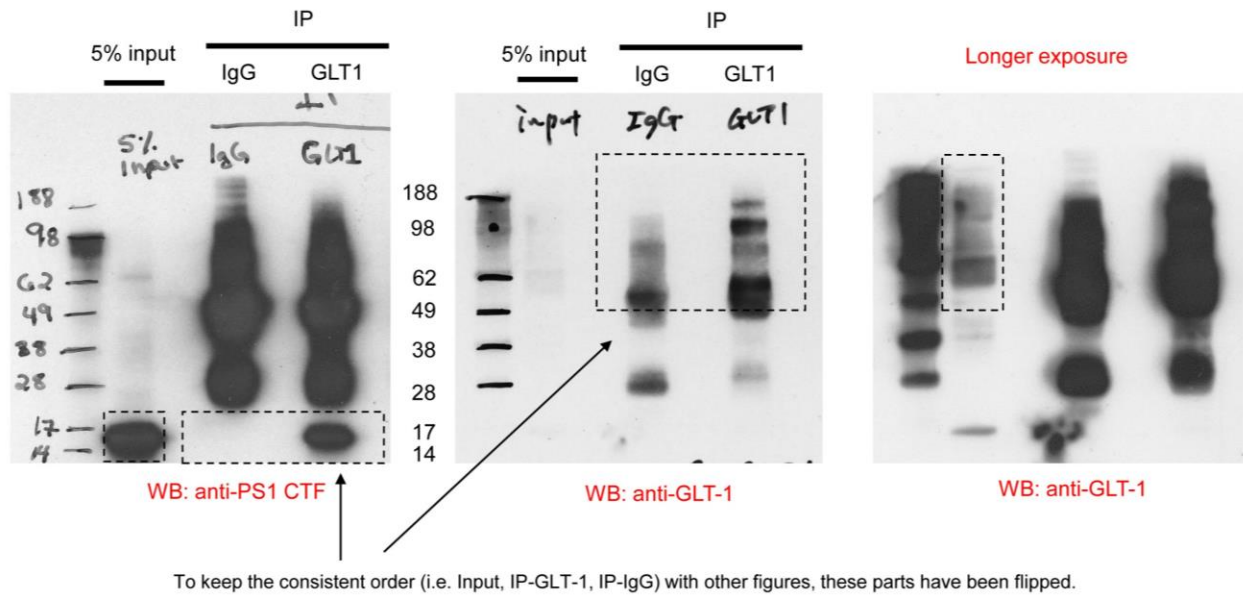


Figure 3A

