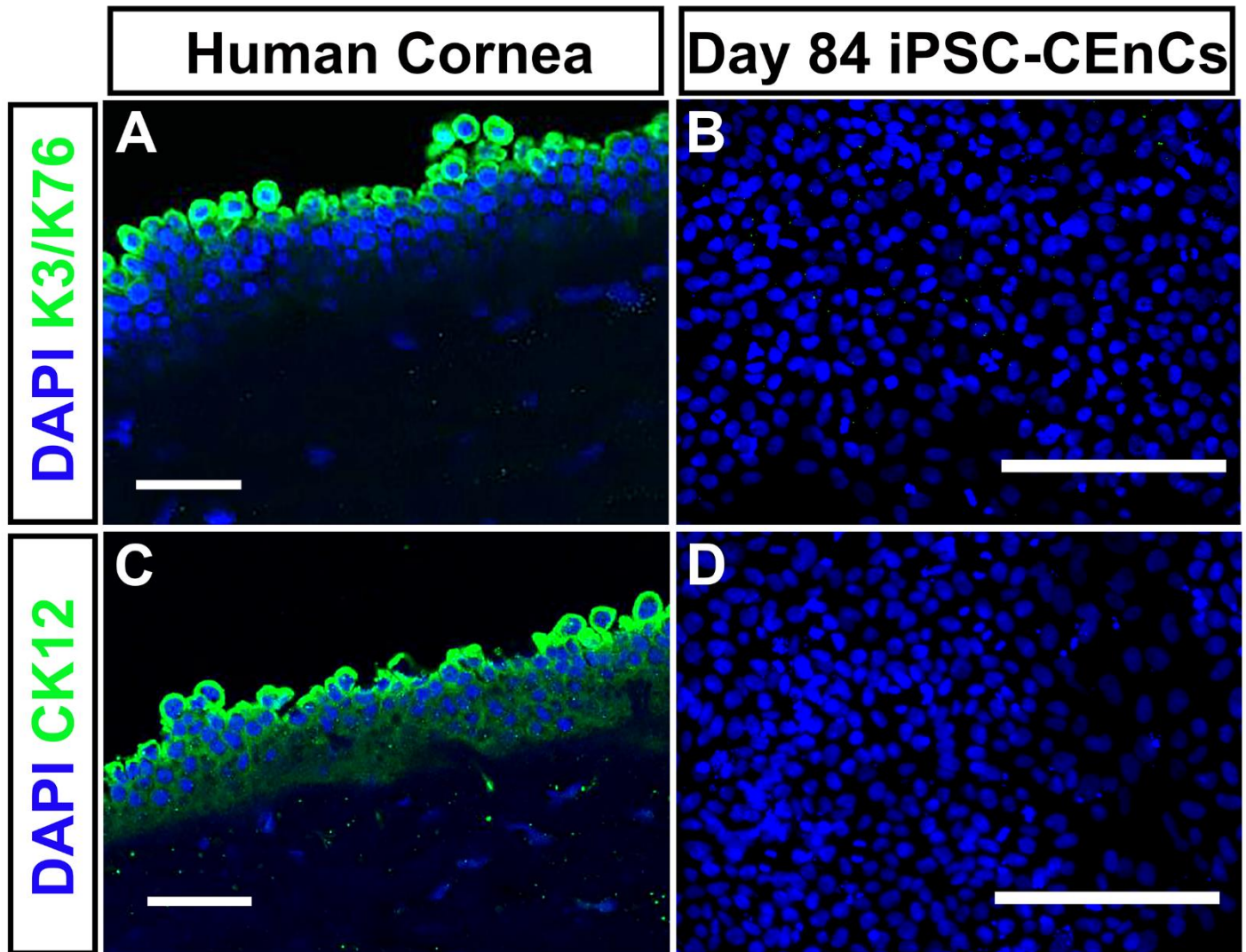


Supplemental Data

Supplemental Figure 1



Supplemental Figure 1: iPSC-derived CEnCs do not express markers specific to the corneal epithelium. A-D) Representative immunocytochemical labeling of sections of human cornea (A, C) and Day 84 iPSC-derived CEnCs (B, D) with antibodies against the corneal epithelial-specific markers, keratin 3/keratin 76 (A-B; K3/K76; green) and cytokeratin 12 (C-D; CK12; green). DAPI was used to counterstain cell nuclei. Scale bars = 50 μm in A, C and 200 μm in B, D.