

Supplemental Information

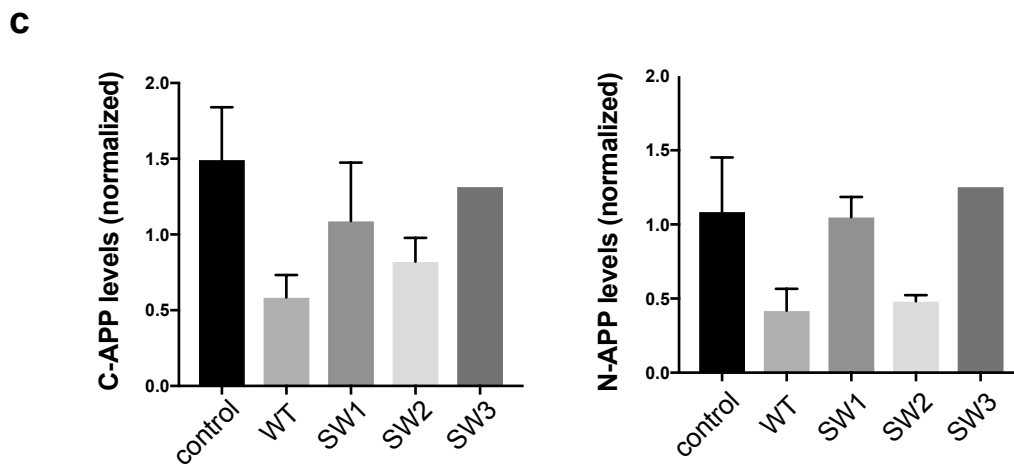
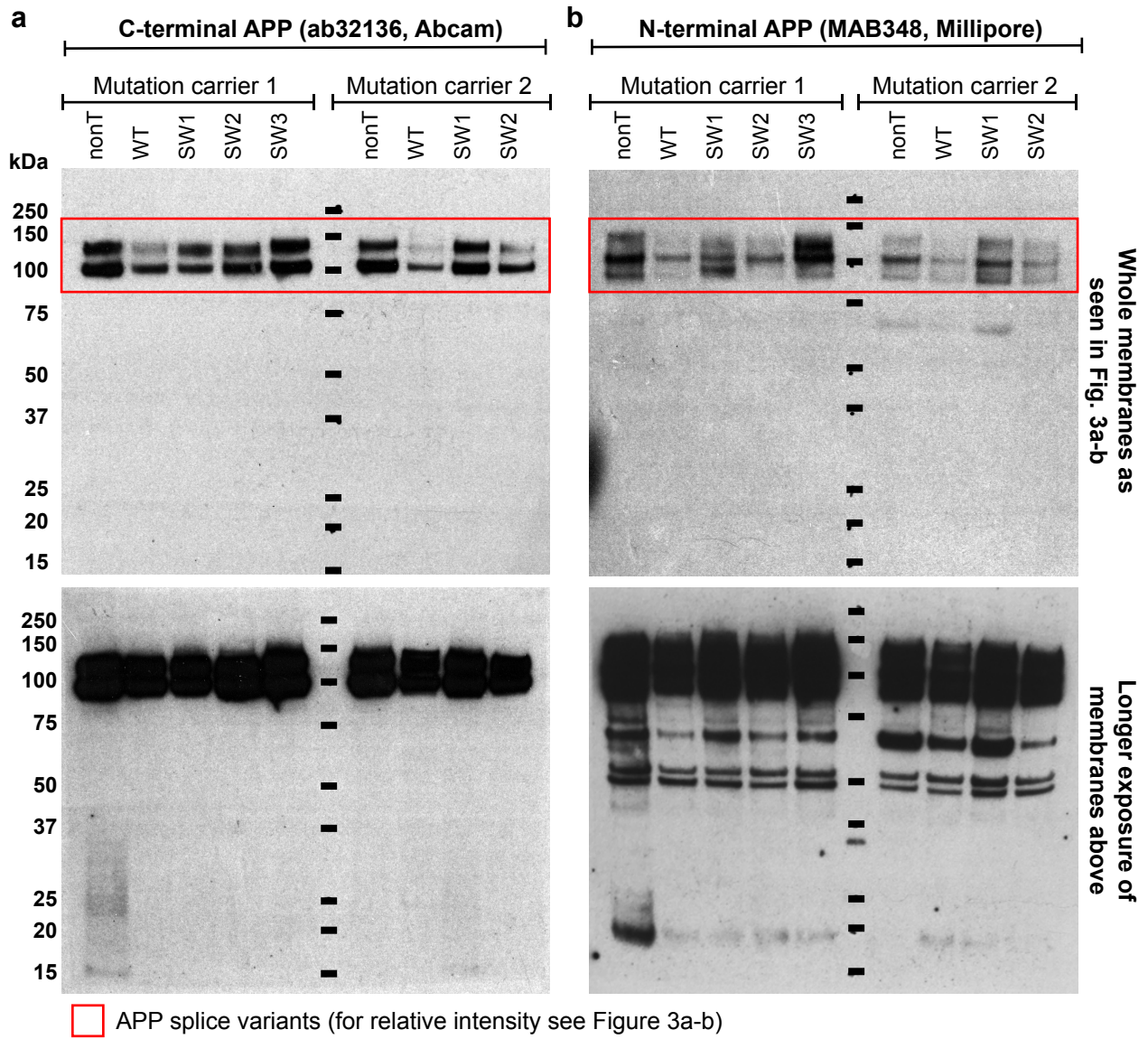
CRISPR/Cas9 Mediated Disruption of the *Swedish*

***APP* Allele as a Therapeutic Approach**

for Early-Onset Alzheimer's Disease

Bence György, Camilla Lööv, Mikołaj P. Zaborowski, Shuko Takeda, Benjamin P. Kleinstiver, Caitlin Commins, Ksenia Kastanenka, Dakai Mu, Adrienn Volak, Vilmantas Giedraitis, Lars Lannfelt, Casey A. Maguire, J. Keith Joung, Bradley T. Hyman, Xandra O. Breakefield, and Martin Ingelsson

Supplementary Figure 1



Supplementary Fig. 1

Quantification of the full gels presented in Figs. 4a-b. Panels below gels show the measured *APP* levels normalized to vinculin and GAPDH levels (C-terminus *APP* in a and N-terminus *APP* in b). Below are the membranes shown in Figs. 4. a-b, but at longer exposure to study the potential of low levels of truncated *APP* protein.