

Supplemental Information

Phase I Study of Intrapleural Gene-Mediated Cytotoxic Immunotherapy in Patients with Malignant Pleural Effusion

Charu Aggarwal, Andrew R. Haas, Susan Metzger, Laura K. Aguilar, Estuardo Aguilar-Cordova, Andrea G. Manzanera, Gregoria Gómez-Hernández, Sharyn I. Katz, Evan W. Alley, Tracey L. Evans, Joshua M. Bauml, Roger B. Cohen, Corey J. Langer, Steven M. Albelda, and Daniel H. Serman

Supplementary Table 1. Treatment emergent acute (day 1-16) laboratory abnormalities

Category	Event	Cohort 1 (n=3)		Cohort 2 (n=3)				Cohort 3 (n=13)			
		Grade 1	Grade 2	Grade 1	Grade 2	Grade 3	Grade 4	Grade 1	Grade 2	Grade 3	Grade 4
Hematologic	Anemia	1 (33%)	1 (33%)	1 (33%)	1 (33%)	1 (33%)			3 (23%)	1 (8%)	
	Leukopenia			1 (33%)				1 (8%)			
	Lymphopenia		2 (66%)		1 (33%)	1 (33%)	1 (33%)		3 (23%)	3 (23%)	1 (8%)
	Thrombocytopenia							1 (8%)			
Other Laboratory	High Alkaline Phosphatase							1 (8%)			
	High AST/ALT			1 (33%)							
	High Creatinine			2 (66%)				4 (31%)	2 (15%)		
	Hyponatremia	1 (33%)						4 (31%)			
	Hyperkalemia							3 (23%)	1 (8%)		
	Hypernatremia			1 (33%)							
	Hypoalbuminemia		1 (33%)		2 (66%)	1 (33%)		3 (23%)	4 (31%)		
	Hypocalcemia				2 (66%)			6 (46%)			

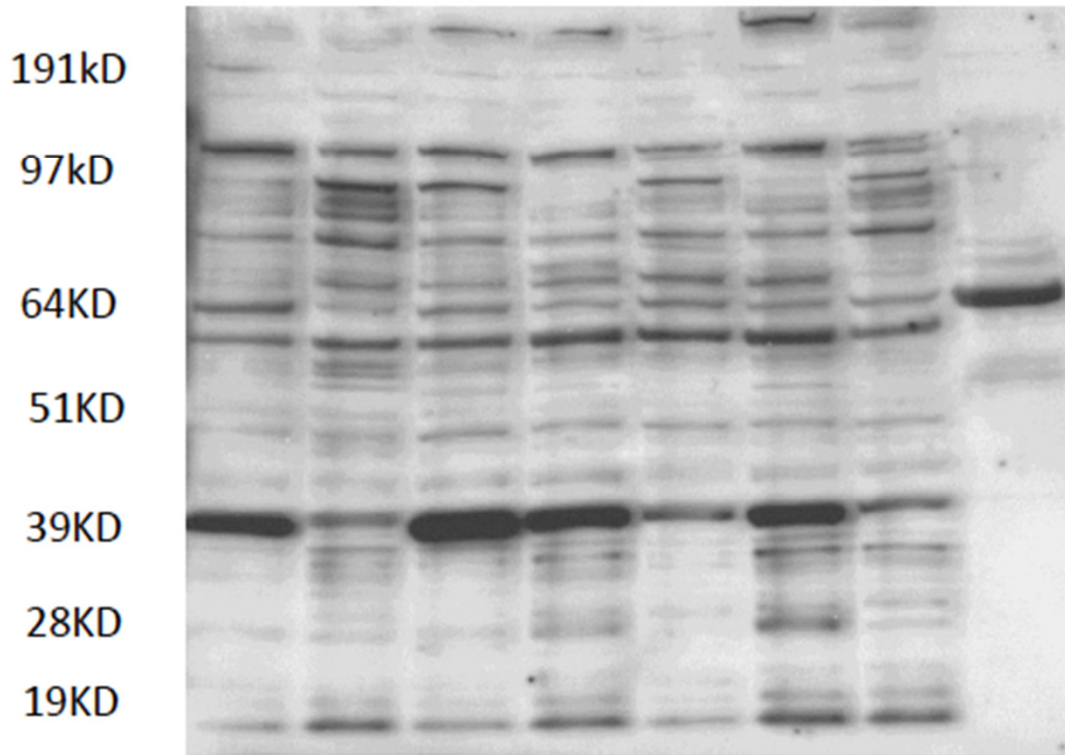
Supplementary Table 2. Baseline Adenoviral Neutralizing Antibody Titers

Patient	Baseline Nab Titers
1MP01P	1:200
1MP02P	1:200
1MP03P	<1:25
2MP01P	1:75
2MP02P	1:50
2MP03P	<1:25
2MP04P	1:400
2MP05P	1:400
2MP06P	1:100
2MP07P	1:100
2MP08P	<1:25
2MP09P	1:150
2MP10P	1:30
2MP11P	1:50
2MP12P	1:400
2MP14P	1:100
2MP15P	<1:25
2MP16P	>1:25,600
2MP17P	1:800

Supplementary Figure 1. Anti-tumor Antibodies by Western Blot

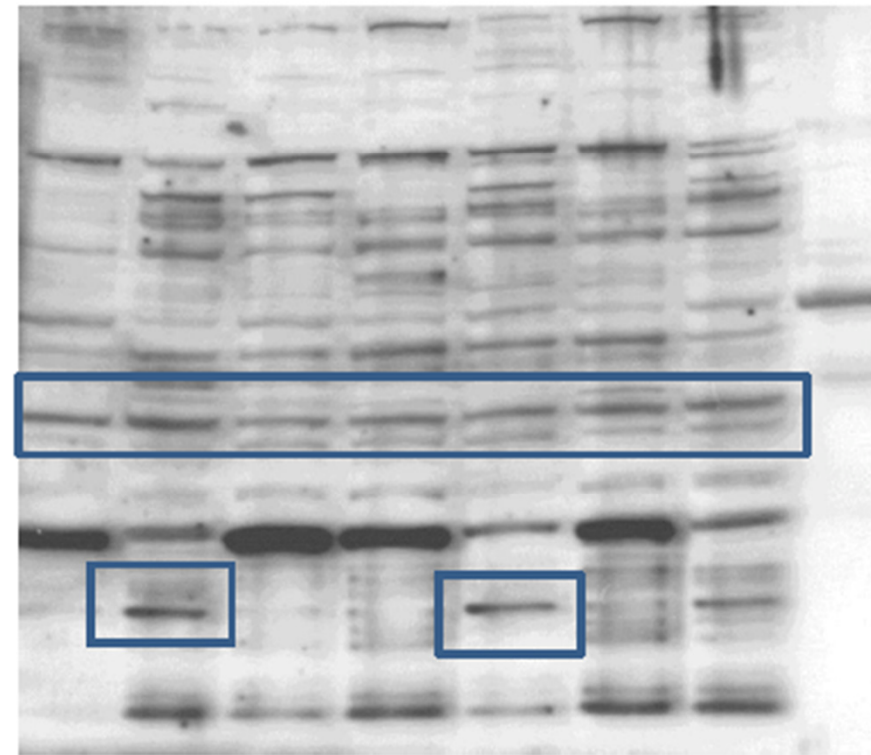
Pt 2MP07P day 0

L55 H1299 A549 H460 ChagoK1 H1264 H358 Calu3



Pt 2MP07P 2 weeks

L55 H1299 A549 H460 ChagoK1 H1264 H358 Calu3



acts from cells or purified proteins were prepared and immunoblotted with patient serum (diluted at 1:1500) baseline, and post treatment. Comparison shows increase in the major bands detected.