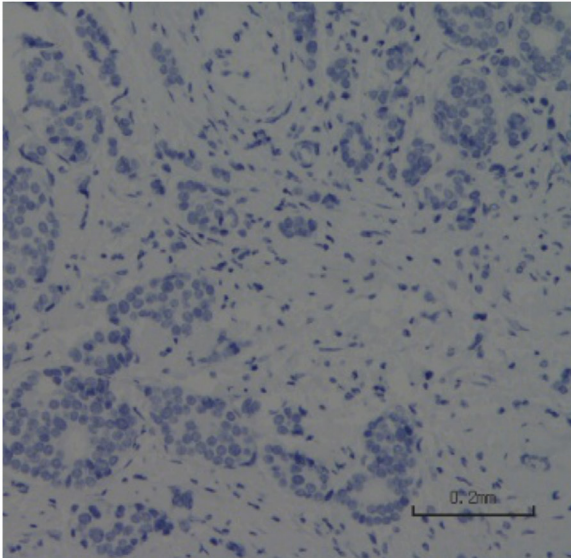
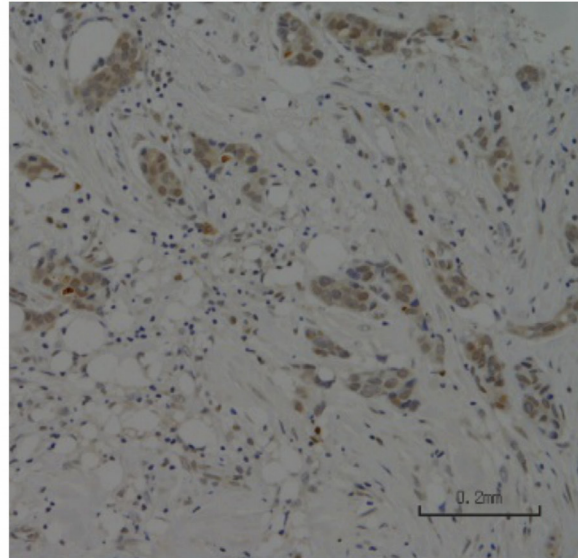


Low expression of G protein-coupled oestrogen receptor 1 (GPER) is associated with adverse survival of breast cancer patients

SUPPLEMENTARY MATERIALS



Negative control



Positive control

Supplementary Figure 1: Photomicrographs following immunohistochemical staining of positive and negative controls in breast cancer specimens used during GPER staining experiments.